



US006284039B1

(12) **United States Patent**
Mule'Stagno et al.

(10) **Patent No.:** **US 6,284,039 B1**
(45) **Date of Patent:** ***Sep. 4, 2001**

- (54) **EPITAXIAL SILICON WAFERS SUBSTANTIALLY FREE OF GROWN-IN DEFECTS**
- (75) Inventors: **Luciano Mule'Stagno; Lu Fei**, both of St. Louis; **Joseph C. Holzer**, St. Charles; **Harold W. Korb**, Town & Country, all of MO (US); **Robert J. Falster**, London (GB)
- (73) Assignee: **MEMC Electronic Materials, Inc.**, St. Peters, MO (US)

(*) Notice: This patent issued on a continued prosecution application filed under 37 CFR 1.53(d), and is subject to the twenty year patent term provisions of 35 U.S.C. 154(a)(2).

Subject to any disclaimer, the term of this patent is extended or adjusted under 35 U.S.C. 154(b) by 0 days.

This patent is subject to a terminal disclaimer.

- (21) Appl. No.: **09/417,610**
- (22) Filed: **Oct. 13, 1999**

Related U.S. Application Data

- (60) Provisional application No. 60/104,288, filed on Oct. 14, 1998.
- (51) **Int. Cl.⁷** **C30B 29/06**
- (52) **U.S. Cl.** **117/3; 117/15; 117/20; 117/201; 117/932; 148/33.1; 148/33.5**
- (58) **Field of Search** **117/3, 15, 20, 117/201, 932; 148/33.3, 33.1**

(56) **References Cited**

U.S. PATENT DOCUMENTS

4,314,595	2/1982	Yamamoto et al.	148/1.5
4,981,549	1/1991	Yamashita et al.	156/620.4
5,264,186	11/1993	Yamashita et al.	422/249

5,474,020	12/1995	Bell et al.	117/20
5,485,803	1/1996	Habu	117/14
5,487,354	1/1996	von Ammon et al.	117/13
5,593,494 *	1/1997	Falster	117/2
5,667,584	9/1997	Takano et al.	117/13
5,704,973	1/1998	Sakurada et al.	117/15
5,728,211	3/1998	Takano et al.	117/14
5,789,309	8/1998	Hellwig	438/478
5,919,302 *	7/1999	Falster et al.	117/3
5,942,032 *	8/1999	Kim et al.	117/13
5,954,873	9/1999	Hourai et al.	117/13
5,968,262	10/1999	Saishouji et al.	117/13
5,968,264	10/1999	Iida et al.	117/30
6,045,610	4/2000	Park et al.	117/13
6,053,974 *	4/2000	Luter et al.	117/200
6,093,913 *	1/1997	Schrenker et al.	117/217

FOREIGN PATENT DOCUMENTS

39 05 626 A1	8/1989	(DE)	C30B/15/20
43 23 964 A1	1/1994	(DE)	H01L/21/324

(List continued on next page.)

OTHER PUBLICATIONS

Puzanov, N., et al., "Modelling microdefect distribution in dislocation-free Si crystals grown from the melt", Journal of Crystal Growth, 178 (1997), pp. 468-478.

(List continued on next page.)

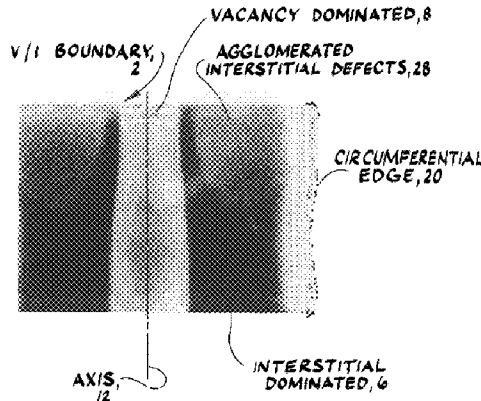
Primary Examiner—Robert Kunemund

(74) *Attorney, Agent, or Firm*—Senniger, Powers, Leavitt & Roedel

(57) **ABSTRACT**

The present invention is directed to a set of epitaxial silicon wafers assembled in a wafer cassette, boat or other wafer carrier. Each wafer comprises a single crystal silicon substrate having an axially symmetric region in which silicon self-interstitials are the predominant intrinsic point defect and which is substantially free of agglomerated defects, and an epitaxial layer which is deposited upon a surface of the substrate and which is substantially free of grown-in defects caused by the presence of agglomerated silicon self-interstitial defects on the substrate surface upon which the epitaxial layer is deposited.

35 Claims, 25 Drawing Sheets



FOREIGN PATENT DOCUMENTS

44 14 947 A1	8/1995 (DE)	C30B/15/20
198 06 045			
A1	8/1998 (DE)	C30B/15/20
02180789	7/1990 (EP)	C30B/15/20
04108682	4/1992 (EP)	C30B/15/00
0 503 816 B1	9/1992 (EP)	C30B/33/02
0 504 837 A2	9/1992 (EP)	C30B/15/00
1 536 958 A1	4/1993 (EP)	C30B/15/00
0 716 168 A1	6/1996 (EP)	C30B/15/14
0 799 913 A1	10/1997 (EP)	C30B/15/00
0 962 556 A1	12/1999 (EP)	C30B/15/00
2182 262 A	5/1987 (GB)	C30B/15/20
8-268794	8/1996 (JP)	C30B/15/20
8-330316	8/1996 (JP)	H01L/21/322
9-202690	9/1997 (JP)	C30B/15/22
11-157995-A	6/1999 (JP)	C30B/29/06
11-180800-A	7/1999 (JP)	C30B/29/06
11-189495-A	7/1999 (JP)	C30B/29/06
11-199386-A	7/1999 (JP)	C30B/29/06
11-199387-A	7/1999 (JP)	C30B/29/06
WO 97/26393	7/1997 (WO)	C30B/29/06
WO 98/45507	10/1998 (WO)	C30B/15/00
WO 98/45508	10/1998 (WO)	C30B/15/00
WO 98/45509	10/1998 (WO)	C30B/15/00
WO 98/45510	10/1998 (WO)	C30B/15/00

OTHER PUBLICATIONS

Puzanov, N., et al., "Role of Vacancies in the Nucleation of Ringlike-patterned Oxidation-induced Stacking Faults in Melt-grown Silicon Crystals" *Inorganic Materials*, vol. 34-4, (1998), pp. 307-314.

Puzanov, N., et al., "Formation of the bands of anomalous oxygen precipitation in Czochralski-grown Si crystals" *Journal of Crystal Growth* vol. 137 (1994), pp. 642-652.

Puzanov, N., et al., "The Role of Intrinsic Point Defects in the Formation of Oxygen Precipitation Centers in Dislocation-Free Silicon" *Crystallography Reports*, vol. 41, No. 1, 1996, pp. 134-141.

Puzanov, N., et al., "The effect of thermal history during crystal growth on oxygen precipitation in Czochralski-grown silicon" *Semicond. Sci. Technol.*, 7 (1992), pp. 406-413.

von Ammon et al. "Bulk properties of very large diameter silicon single crystals" *Journal of Crystal Growth*, vol. 198/199 (1999) pp. 390-398.

Voronkov, V.V., et al., "Vacancy-type microdefect formation in Czochralski silicon", *Journal of Crystal Growth* 194 (1998) 76-88.

Voronkov, V., et al., "Grown-in microdefects, residual vacancies and oxygen precipitation banks in Czochralski silicon" *Journal of Crystal Growth*, 304 (1999) pp. 462-474.

Eidenzon, A.M., et al. "Defect-Free Silicon Crystals Grown by the Czochralski Technique" *Inorganic Materials*, vol. 33-3 (1997) pp. 219-225.

Eidenzon, A.M., et al., "Influence of growth rate on swirl defects in large dislocation-free crystals of silicon grown by the Czochralski method" *Soviet Physics Crystallography*, Sep.-Oct. 1985, pp. 576-580, 30(5).

Fasler, R., et al., "Intrinsic Point-Defects and Reactions in the Growth of Large Silicon Crystals", *Electrochemical Society Proceedings*, vol. 98-1, pp. 468-489.

Puzanov, N.L., et al., "Harmful Microdefects in the Seed-End Portion of Large-Diameter Silicon Ingots", *Inorganic Materials*, Aug. 1997, pp. 765-769, vol. 33, No. 8.

V. Voronkov, et al., "Behaviour and Effects of Intrinsic Point Defects in the Growth of Large Silicon Crystals", *Electrochemical Society Proceedings*, vol. 97, No. 22 (1997), pp. 3-17.

Voronkov, "The Mechanism of Swirl Defects Formation in Silicon", *Journal of Crystal Growth*, vol. 59, pp. 625-643.

R. Winkler, et al., "Improvement of the Gate Oxide Integrity by Modifying Crystal Pulling and Its Impact on Device Failures", *Journal of the Electrochemical Society*, vol. 141, No. 5 (1994), pp. 1398-1401.

H. Zimmerman, et al., "Vacancy Concentration Wafer mapping in Silicon", *Journal of Crystal Growth*, vol. 129 (1993), pp. 582-592.

Dornberger, et al., "Simulation of Grown-in Voids in Czochralski Silicon Crystals", *Electrochemical Society Proceedings*, vol. 97-22, pp. 40-49, 1997.

Dornberger, et al., "Simulation of Non-Uniform Grown-in Void Distributions in Czochralski Silicon Crystals", *Electrochemical Society proceedings*, vol. 98, No. 1, pp. 490-503.

Dornberger, et al., "The impact of Dwell Time Above 900° C. During Crystal Growth on the Gate-Oxide Integrity of Silicon Wafers", *Electrochemical Society Proceedings*, vol. 96, No. 13, pp. 140-151, 1998.

International Search Report for International Application No. PCT/US 99/24067 dated Feb. 28, 2000, 7 pages.

Nakamura, et al., "Formation Process of Grown-in Defects in Czochralski Grown Silicon Crystals", *Journal of Crystal Growth*, vol. 180, pp. 61-72, 1997.

Sinno, et al., "On the dynamics of the Oxidation-Induced Stacking-Fault Ring in As-Grown Czochralski Silicon Crystals", *Appl. Phys. Lett.*, vol. 70, No. 17, pp. 2250-2252, 1997.

Sinno, et al., "Point Defect Dynamics and the Oxidation-Induced Stacking-Fault Ring in Czochralski-Grown Silicon Crystals", *J. Electrochem. Soc.*, vol. 145, No. 1, pp. 302-318, 1998.

Tan, T.Y., "Point Defects, Diffusion Processes, and Swirl Defect Formation in Silicon", *Appl. Phys. A*, vol. 37, pp. 1-17, 1985.

Vanhellemont, et al., "Defects in As-Grown Silicon and their Evolution During Heat Treatments", *Materials Science Forum*, vols. 258-263, pp. 341-346, 1997.

E. Dornberger, et al., "The Dependence of Ring Like distributed Stacking Faults on the Axial Temperature Gradient of Growing Czochralski Silicon Crystals", *Electrochemical Society Proceedings*, vol. 95, No. 4 (1995), pp. 294-305.

G. Kissinger, et al., "A Method for Studying the Grown-In Defect Density Spectra in Czochralski Silicon Wafers", *J. Electrochem. Soc.*, Fol. 144, No. 4 (1997), pp. 1447-1456.

A.J.R. de Kock, et al., "The Effect of Doping on the Formation of Swirl Defects in Dislocation-Free Czochralski-Grown Silicon Crystals", *Journal of Crystal Growth*, vol. 49 (1980), pp. 718-734.

von Ammon, et al., "The Dependence of Bulk Defects on the Axial Temperature Gradient of Silicon Crystals During Czochralski Growth", *Journal of Crystal Growth*, vol. 151 (1995), pp. 273-277.

* cited by examiner

FIG. 1

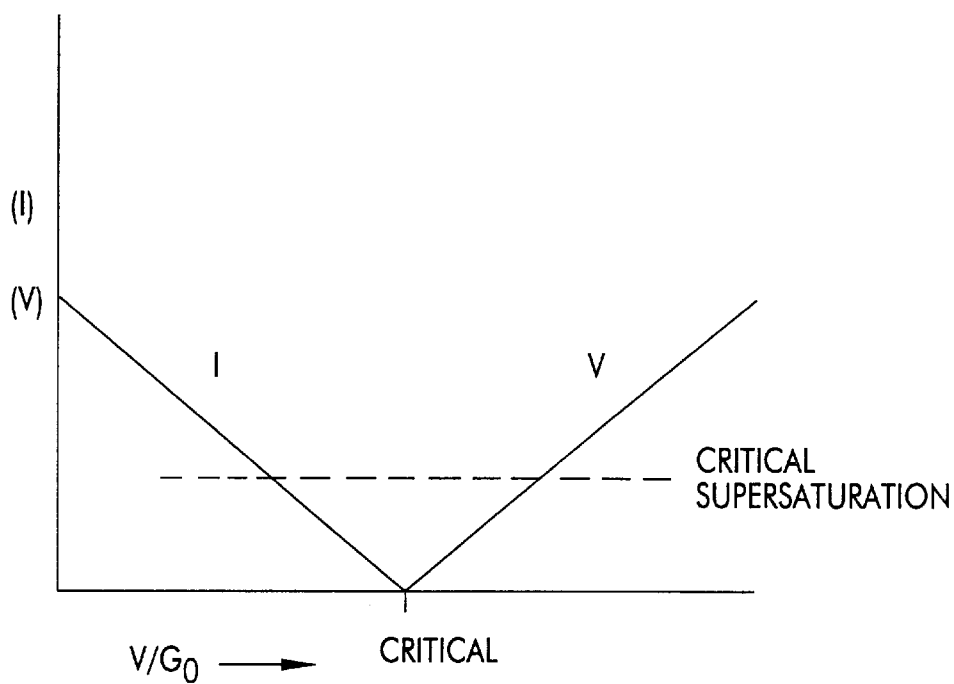


FIG. 2

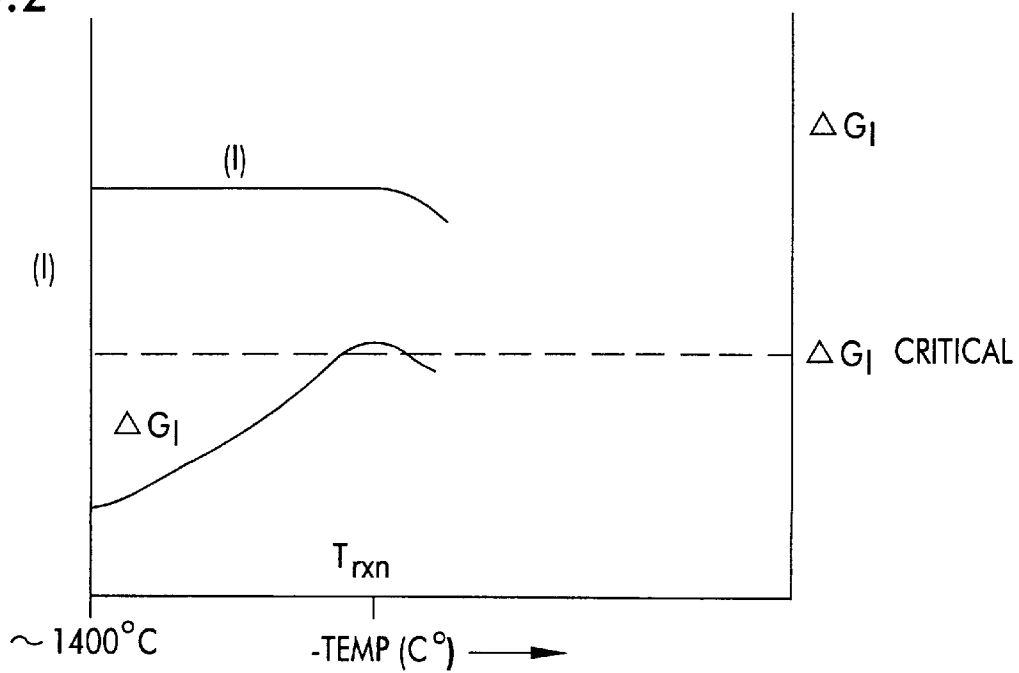


FIG.3

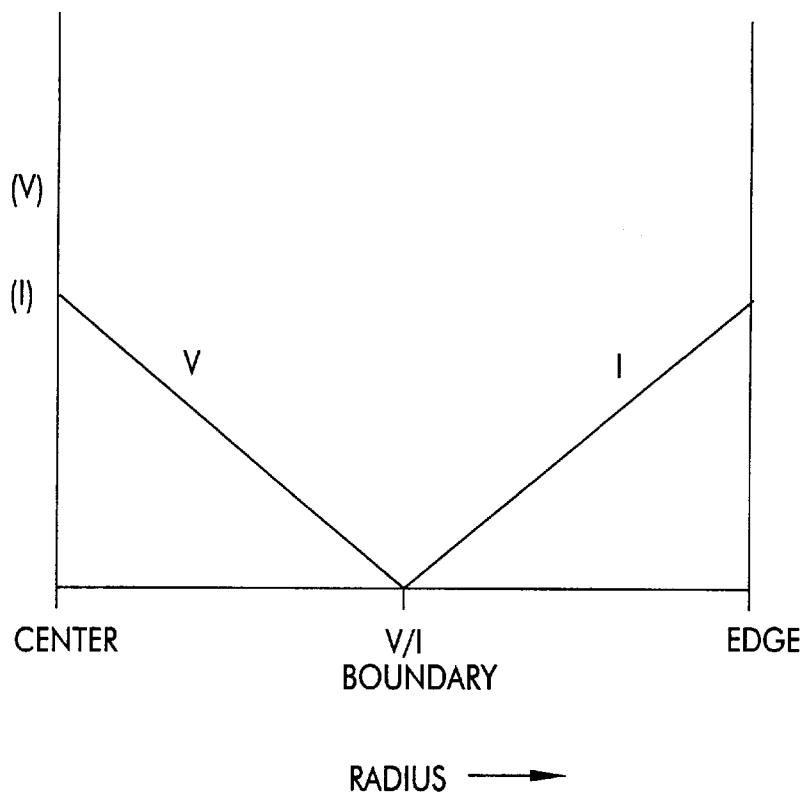


FIG.4

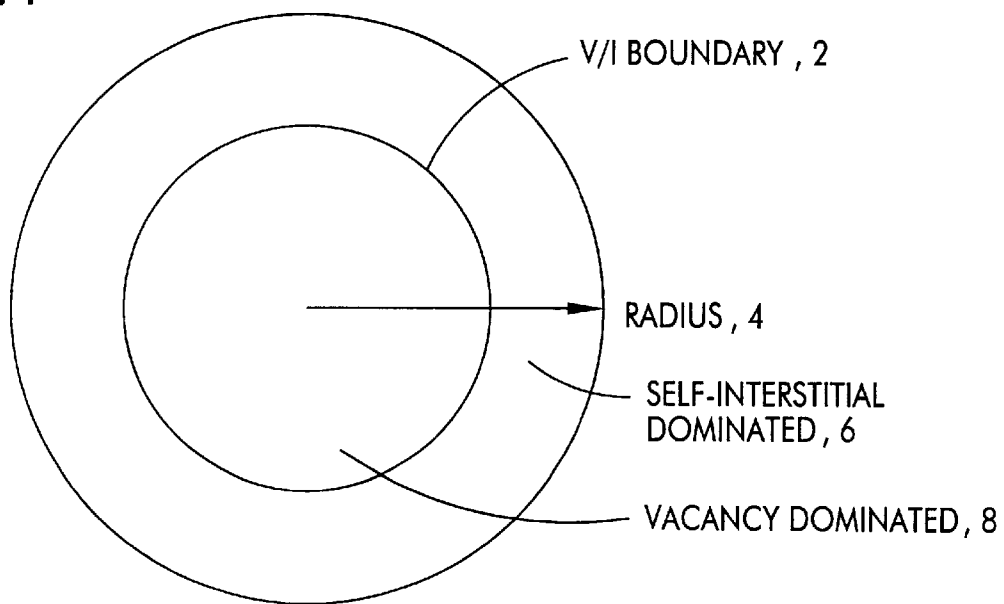


FIG. 5

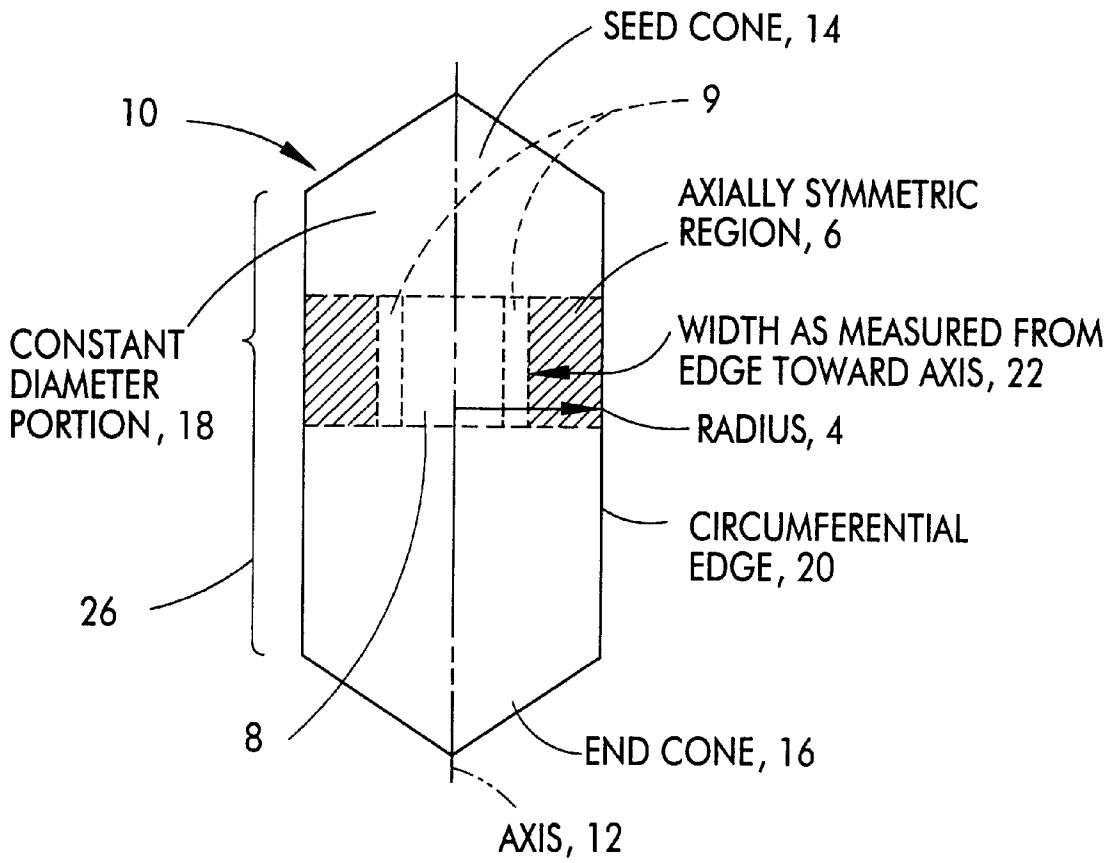


FIG. 6

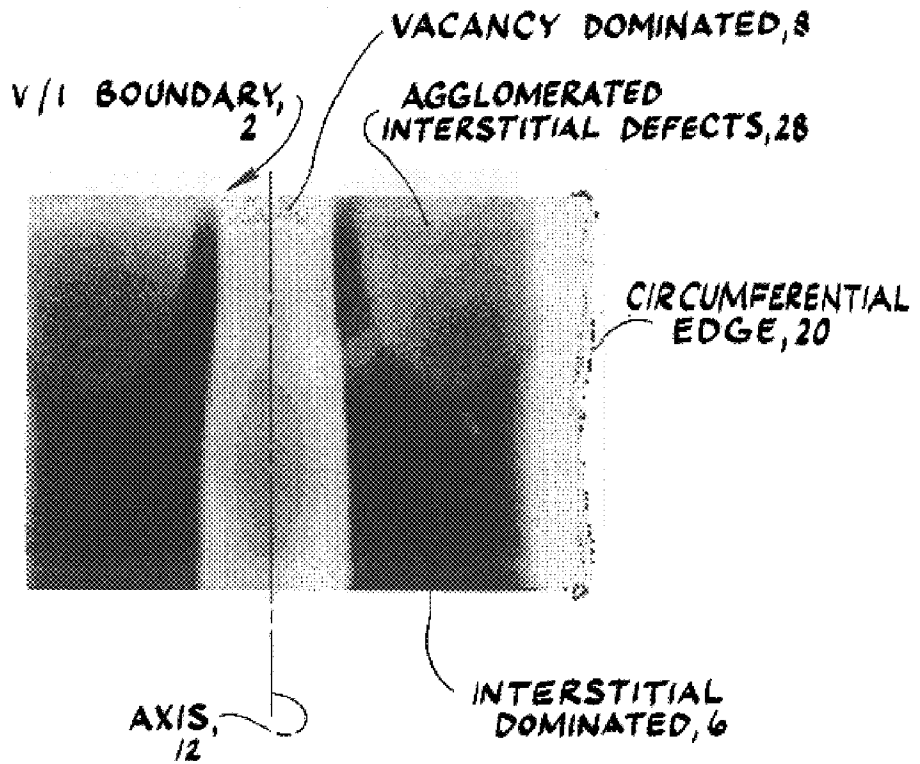


FIG. 7

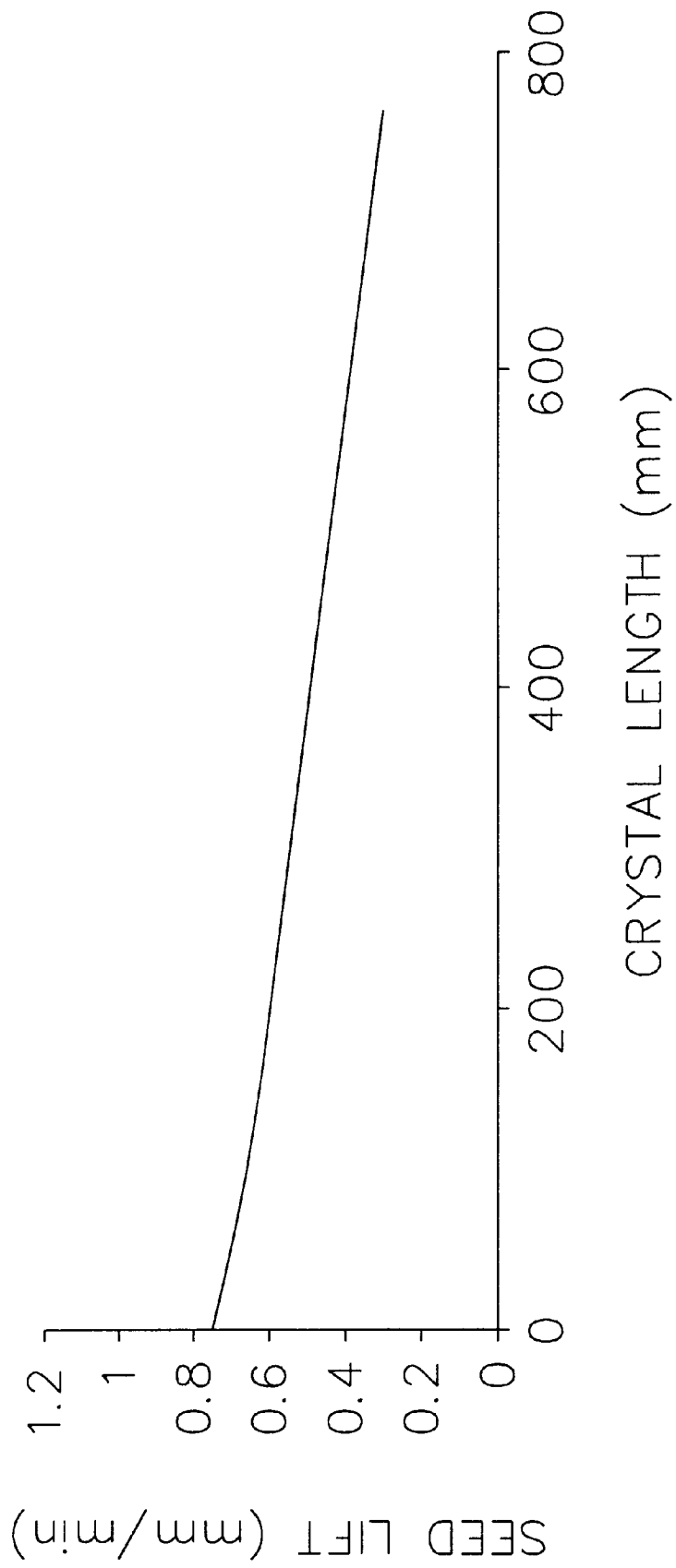


FIG. 8

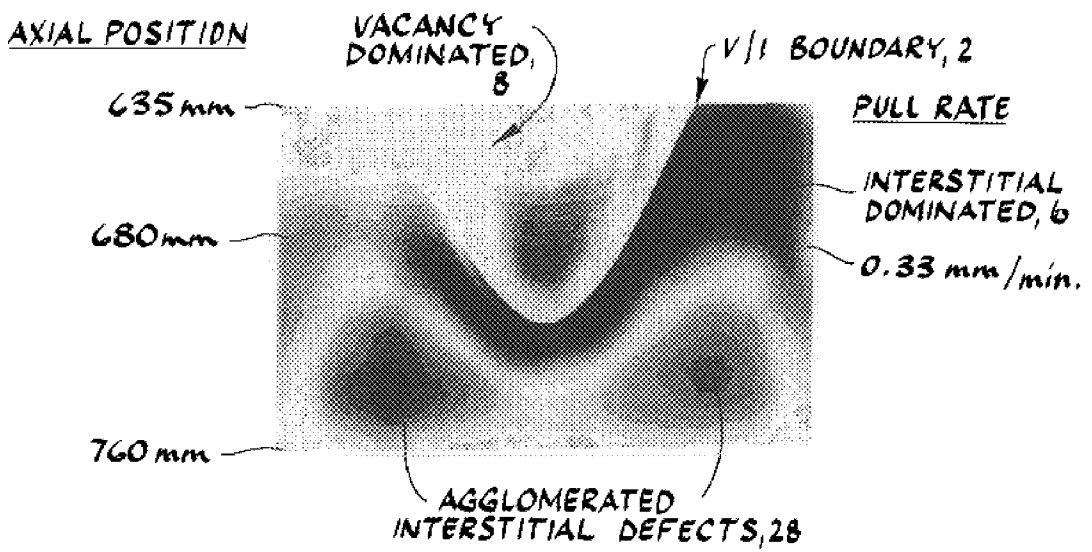


FIG. 9

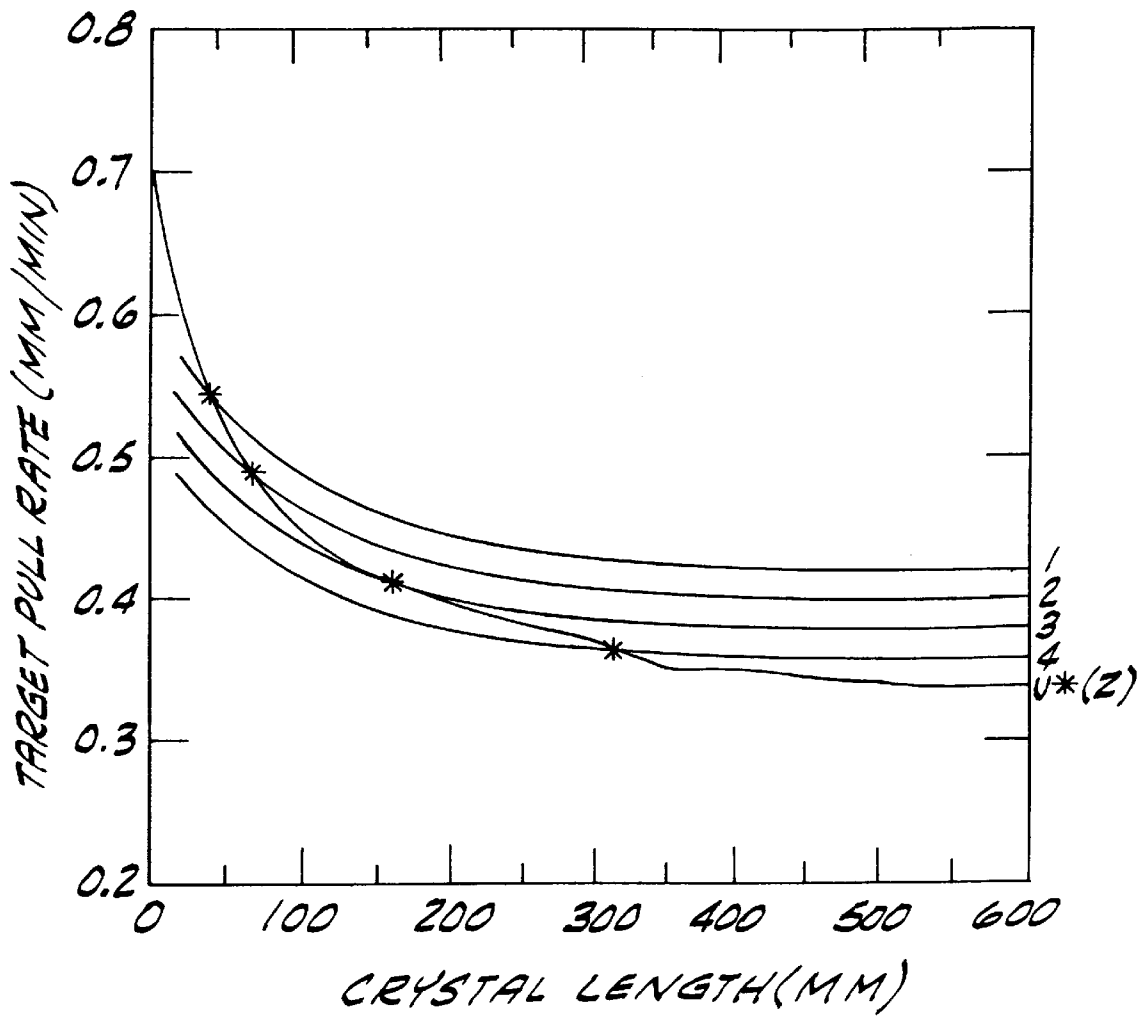


FIG. 10

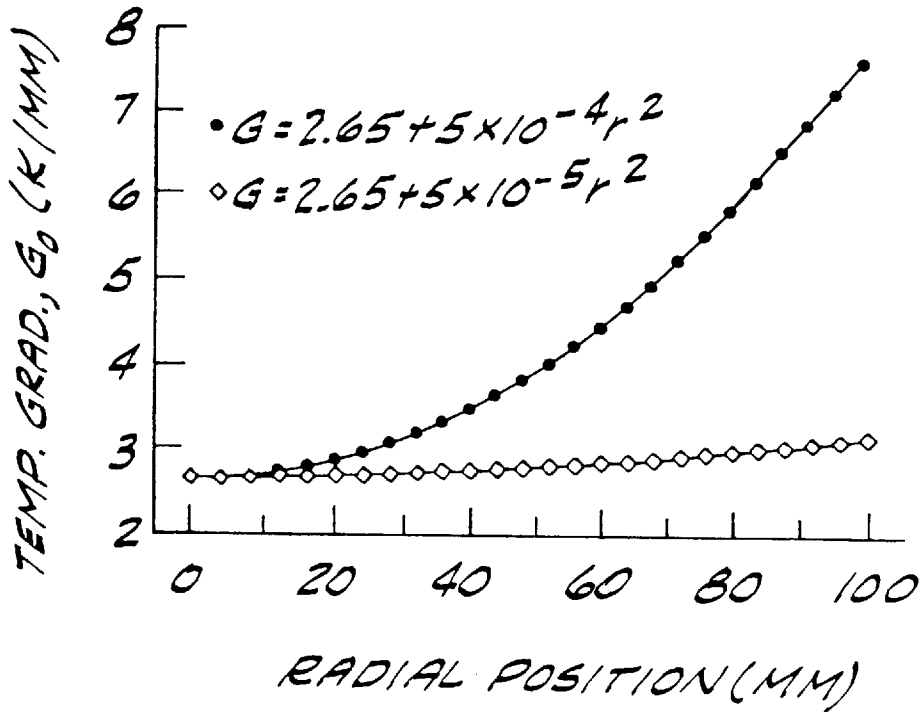


FIG. 11

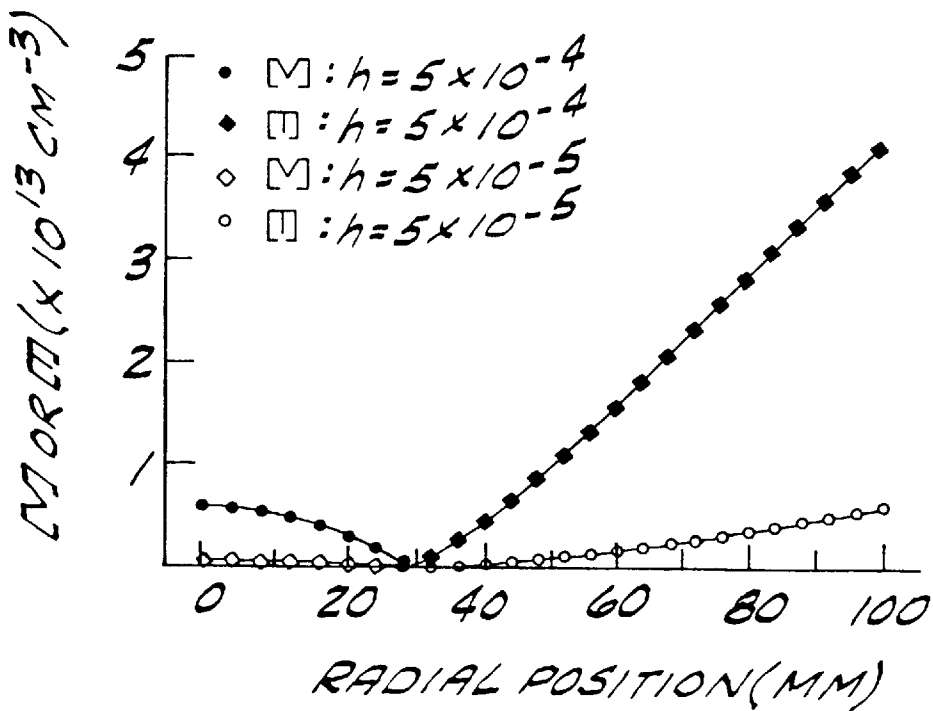


FIG. 12

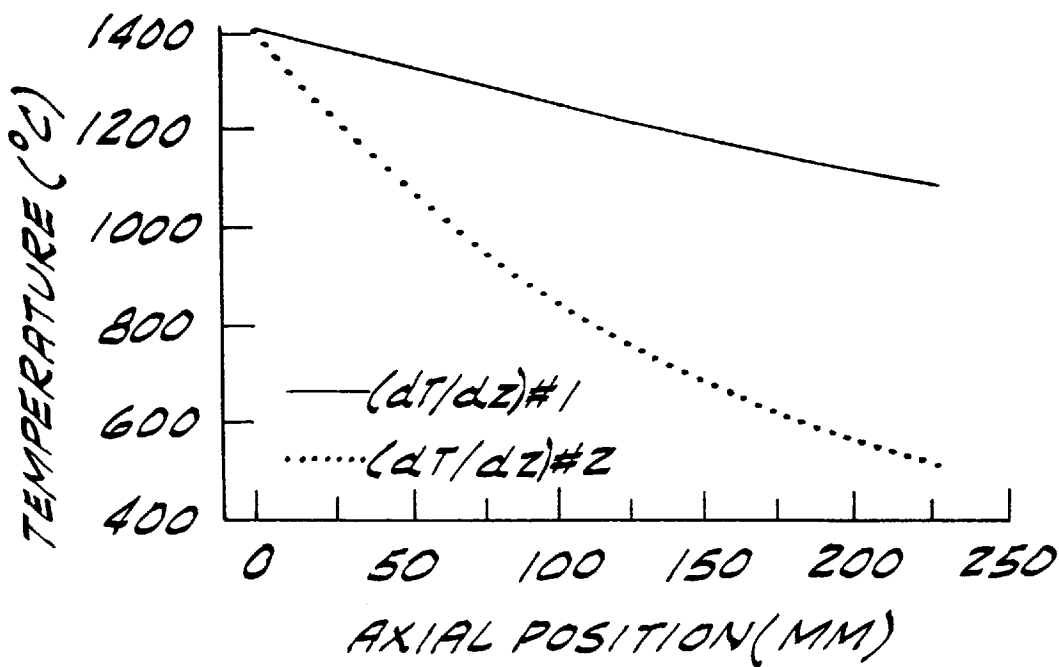


FIG. 13

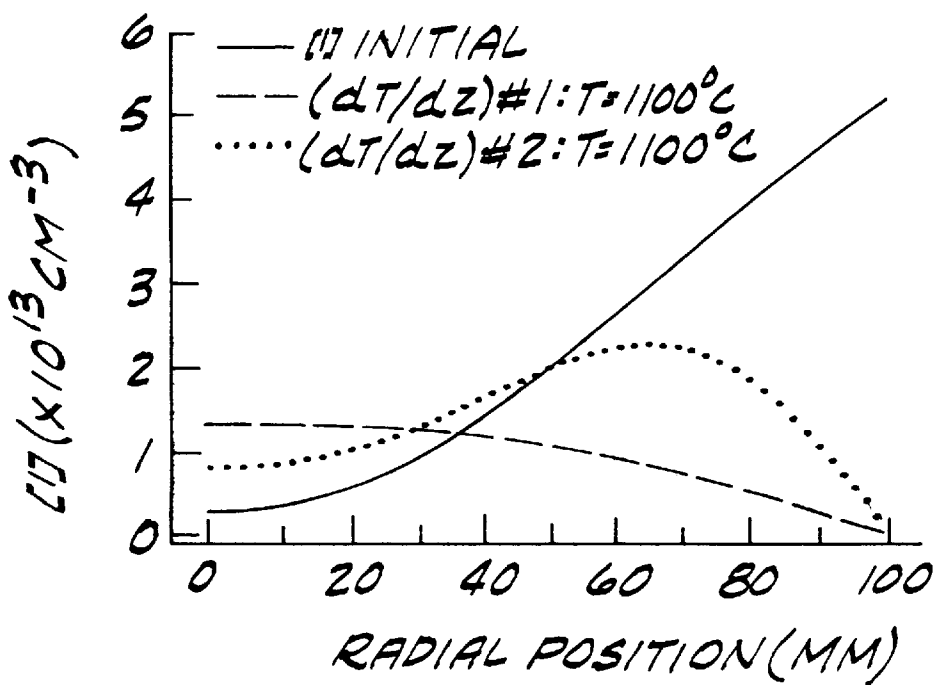


FIG. 14

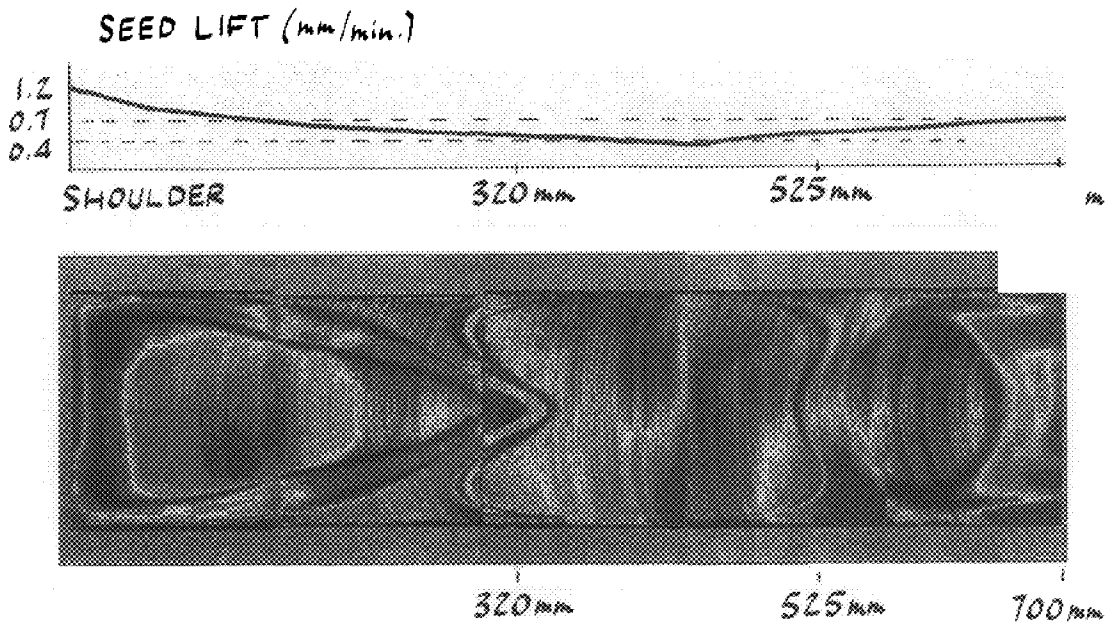


FIG. 15

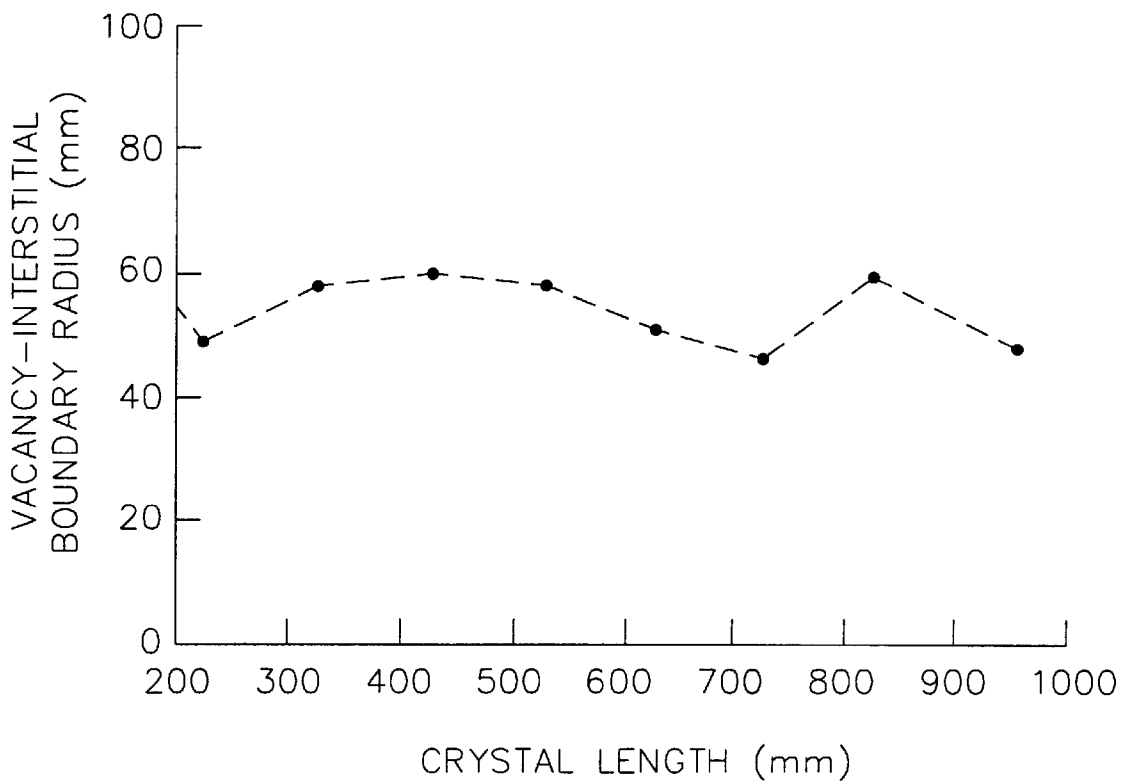


FIG. 16a

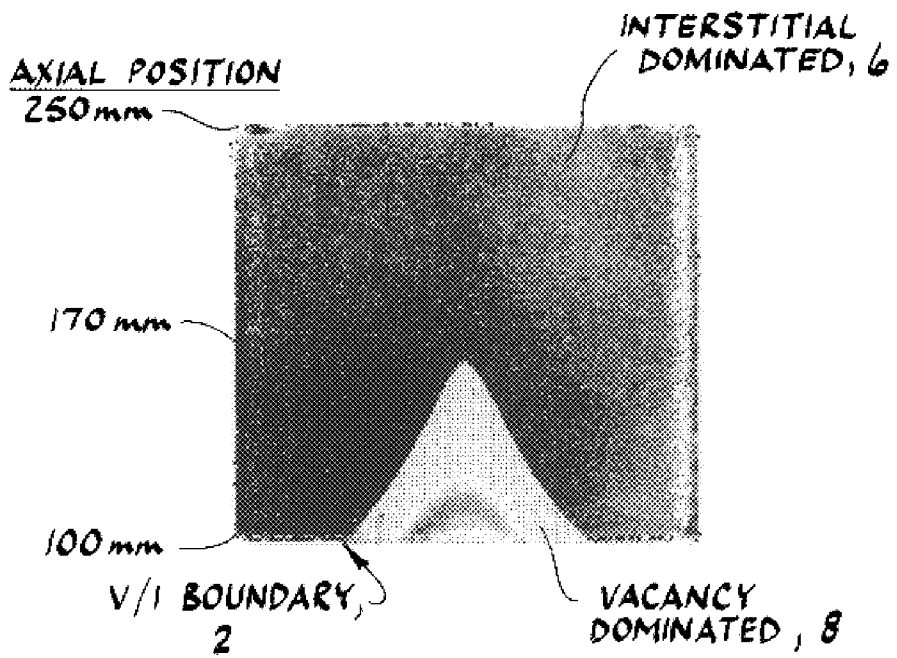


FIG. 16b

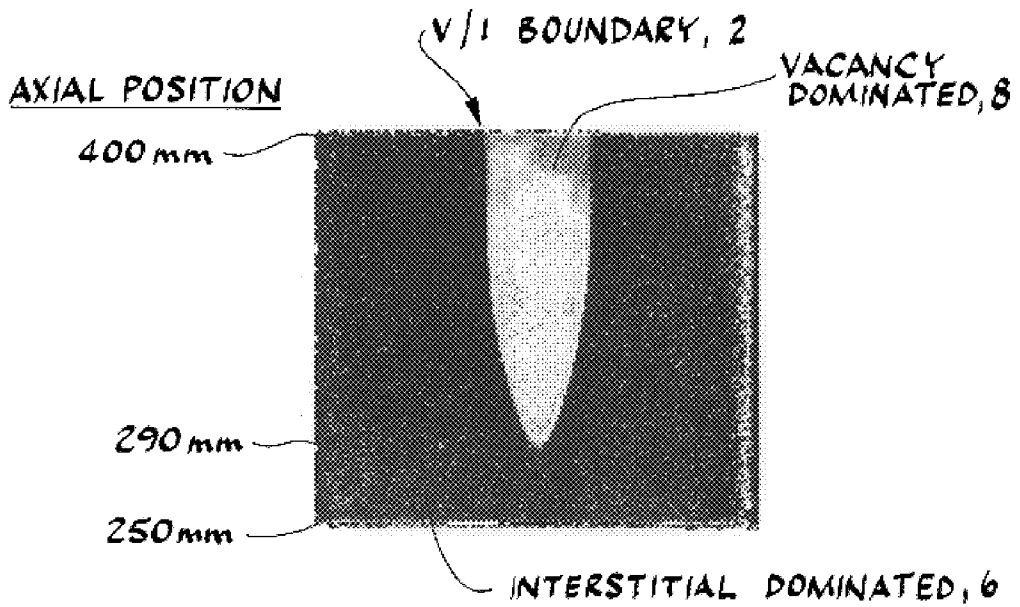
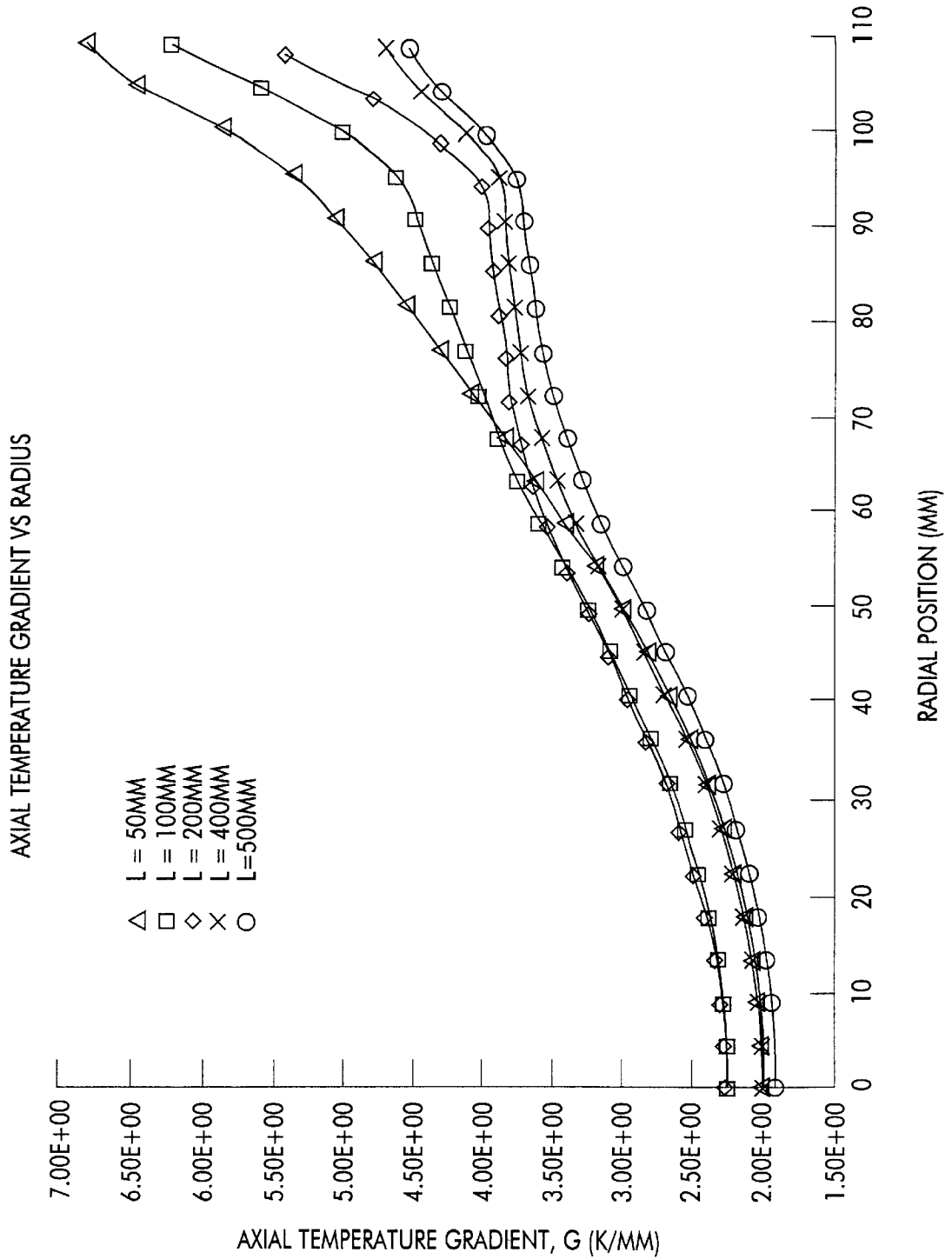


FIG.17



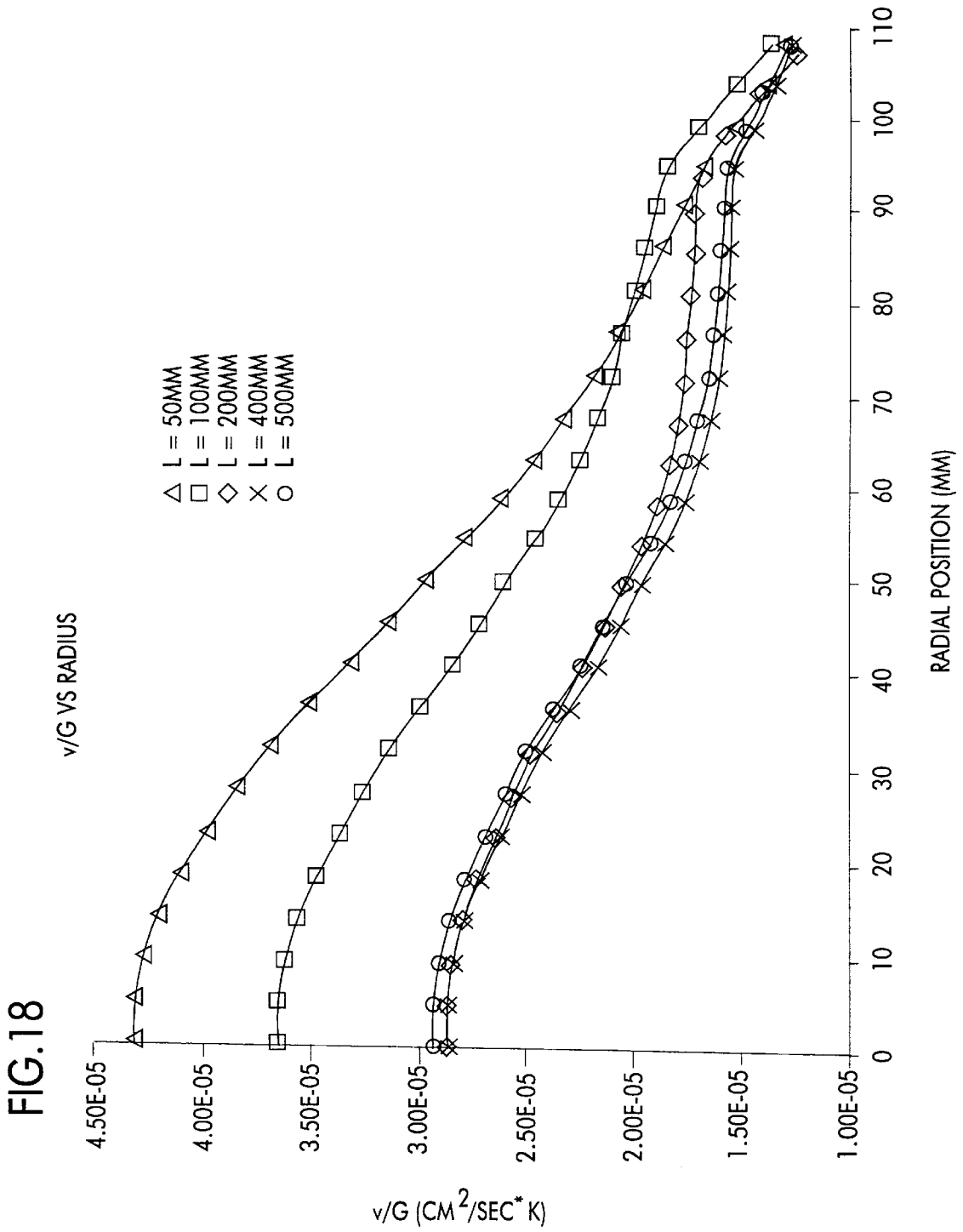


FIG. 19

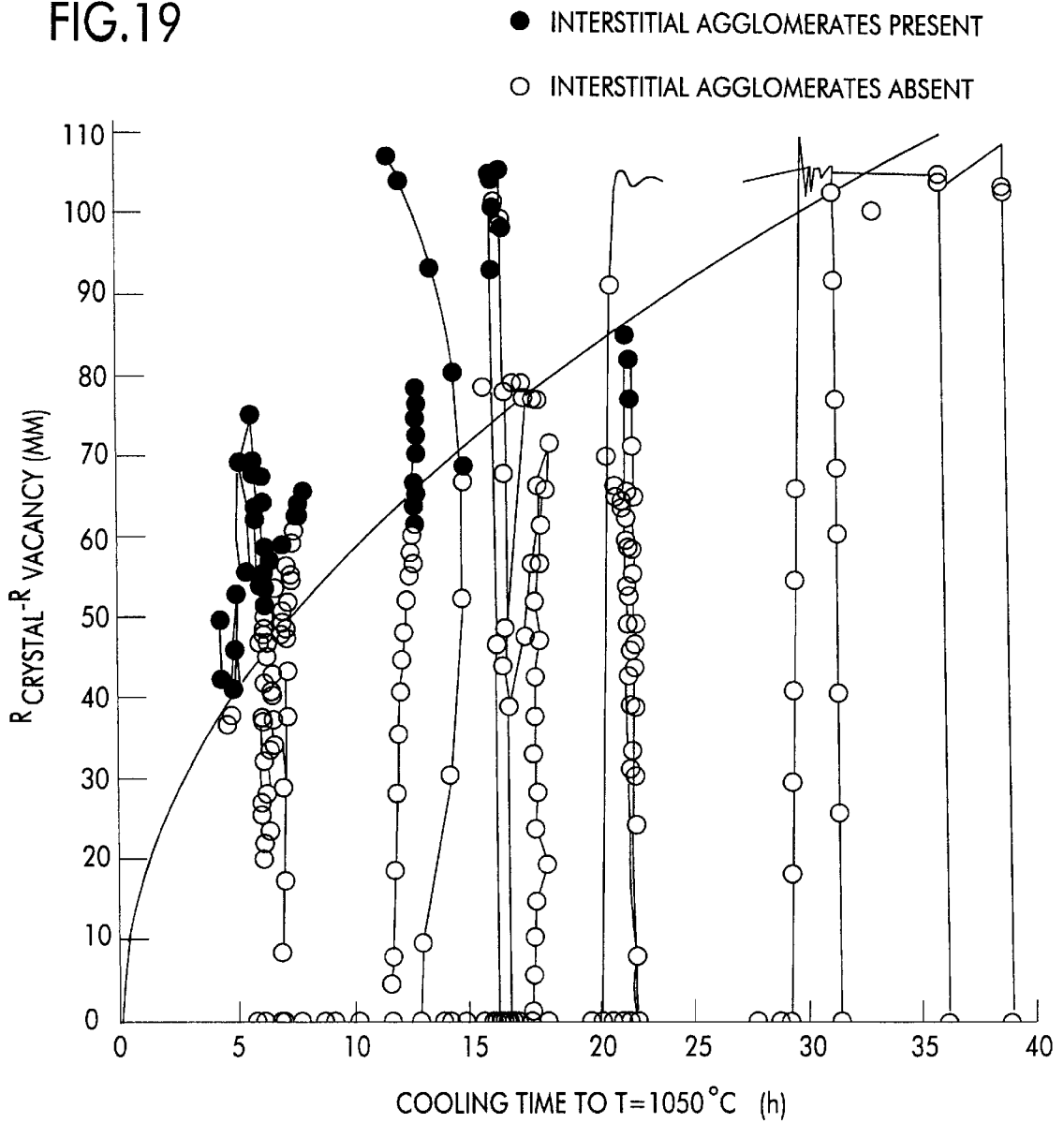


FIG. 20

AXIAL POSITION

235 mm

255 mm

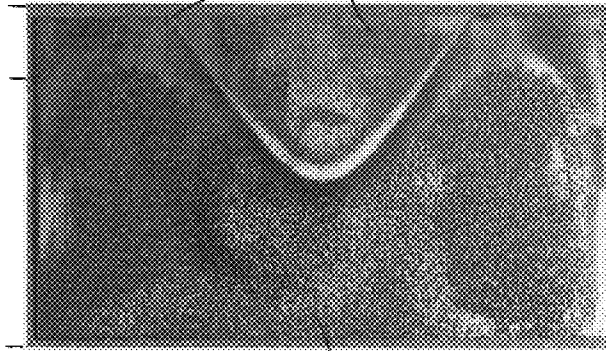
350 mm

V/I BOUNDARY, 2

VACANCY DOMINATED, 8

PULL RATE

0.4 mm/min.



AGGLOMERATED INTERSTITIAL DEFECTS, 28

FIG. 21

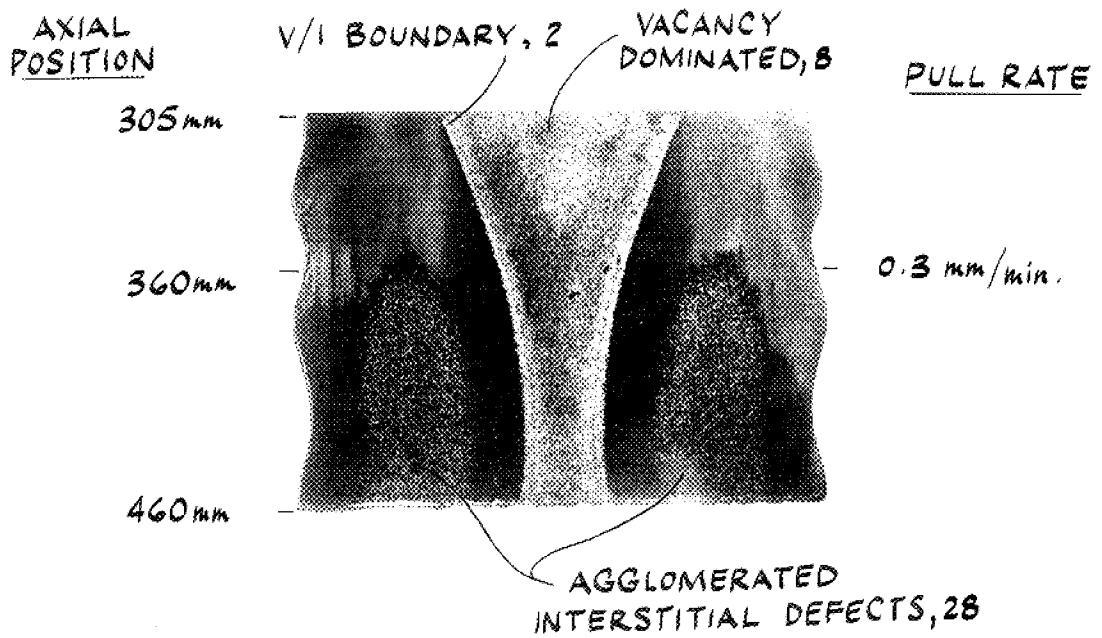


FIG. 22

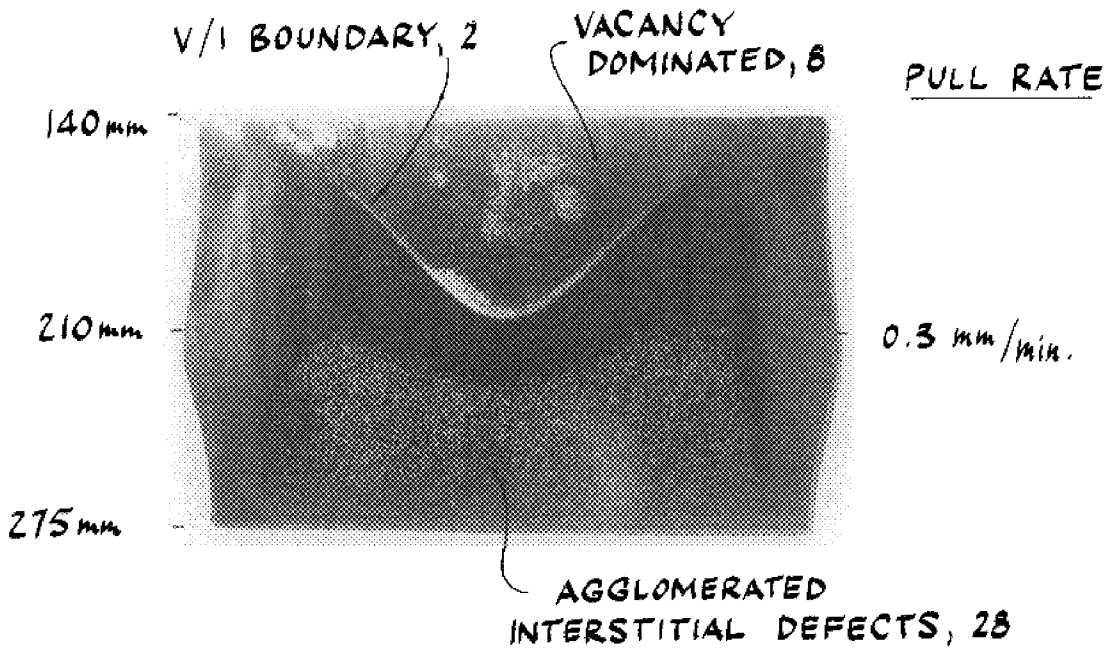


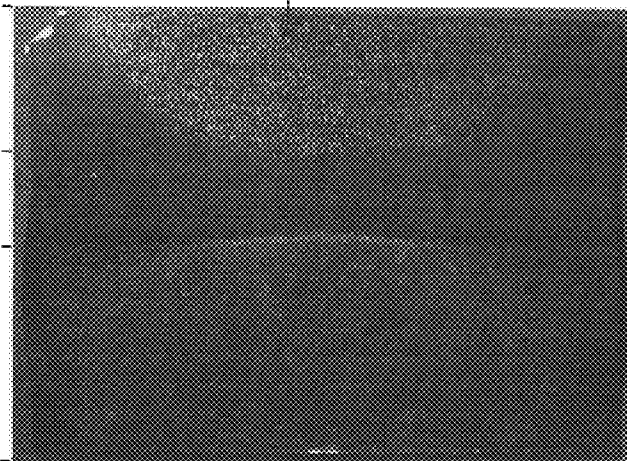
FIG. 23

AXIAL
POSITION
600 mm

640 mm

665 mm

730 mm



AGGLOMERATED
INTERSTITIAL DEFECTS, 28
PULL RATE

VACANCY
DOMINATED, 8

FIG.24

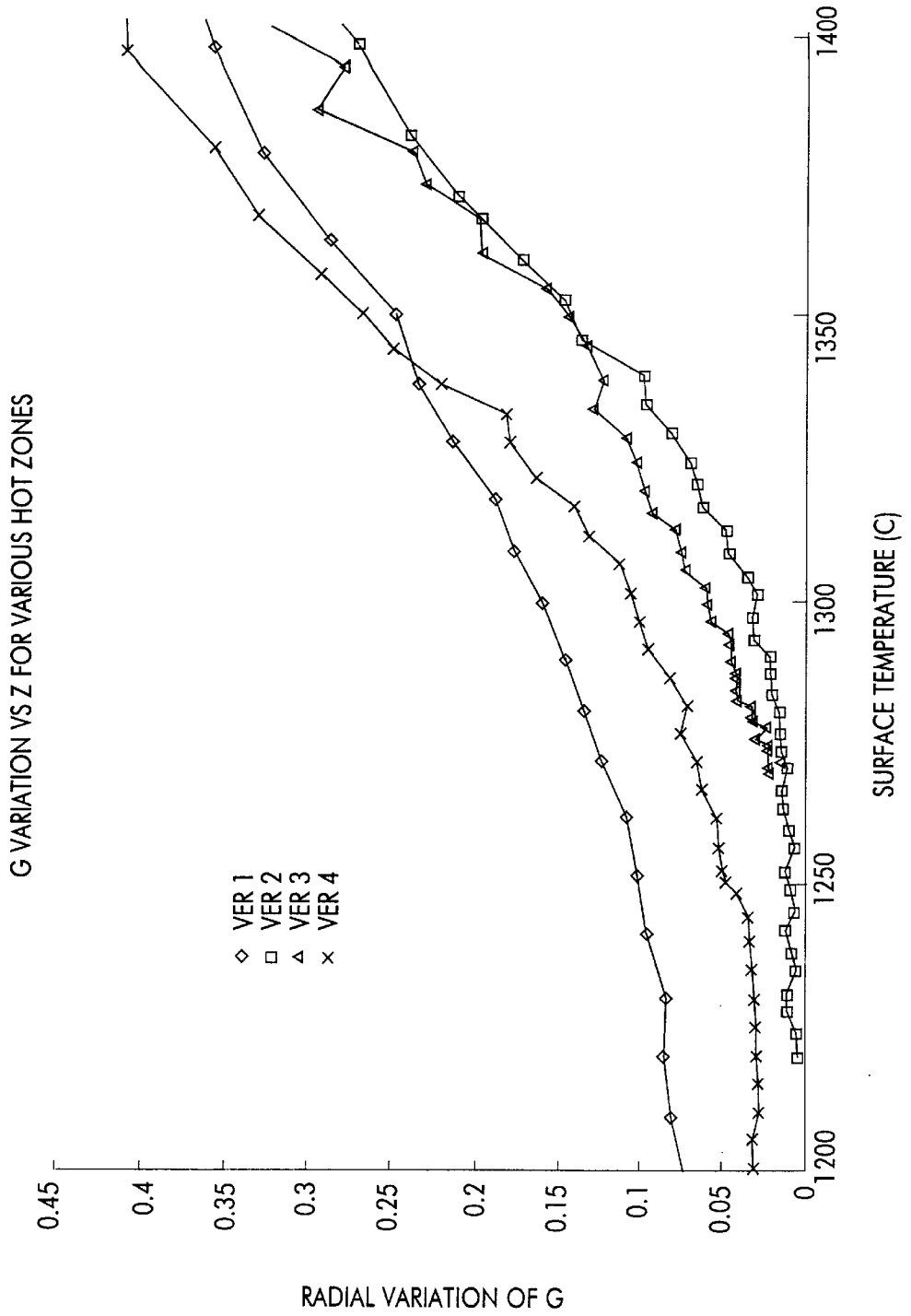


FIG.25

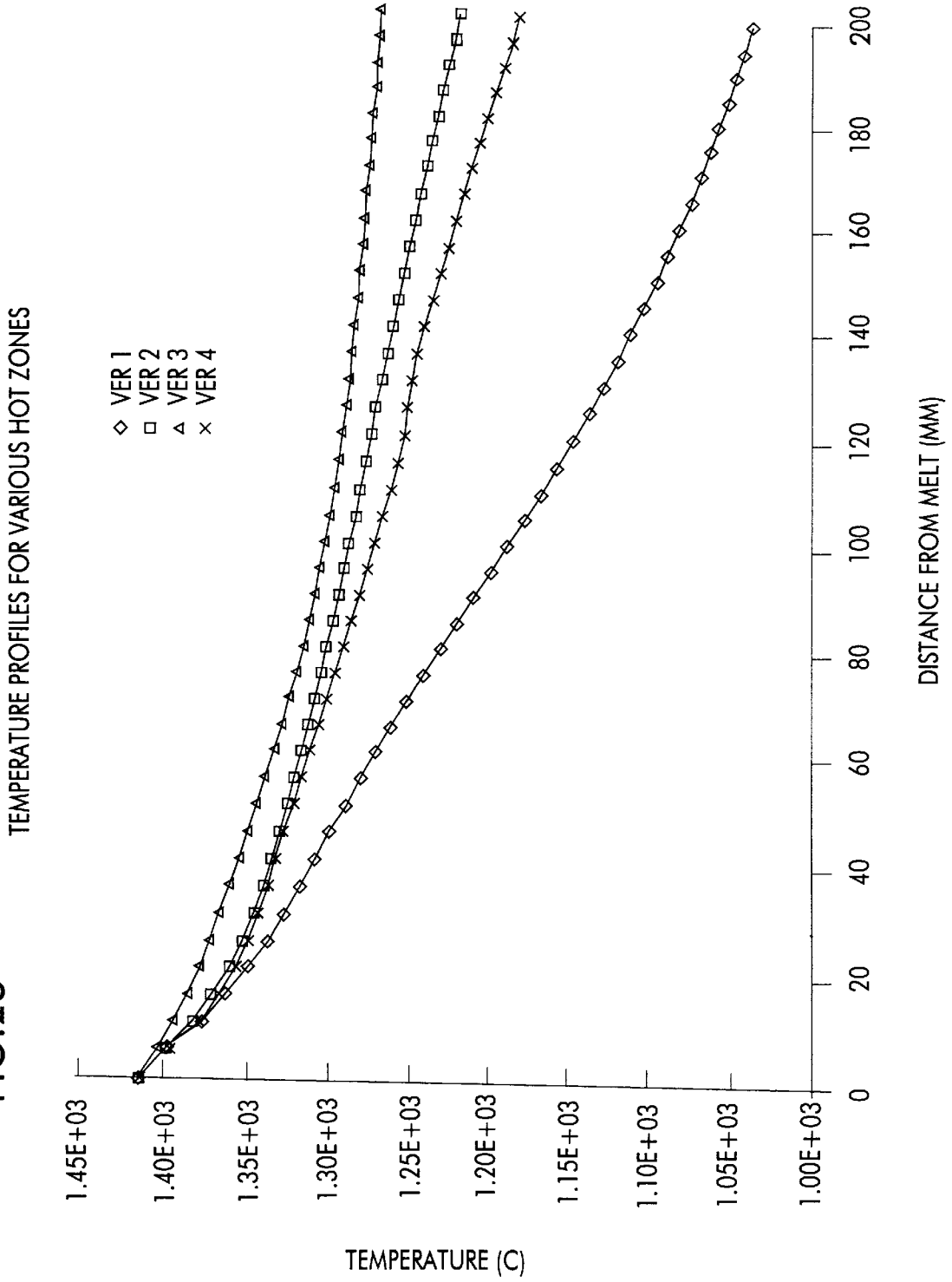


FIG. 26

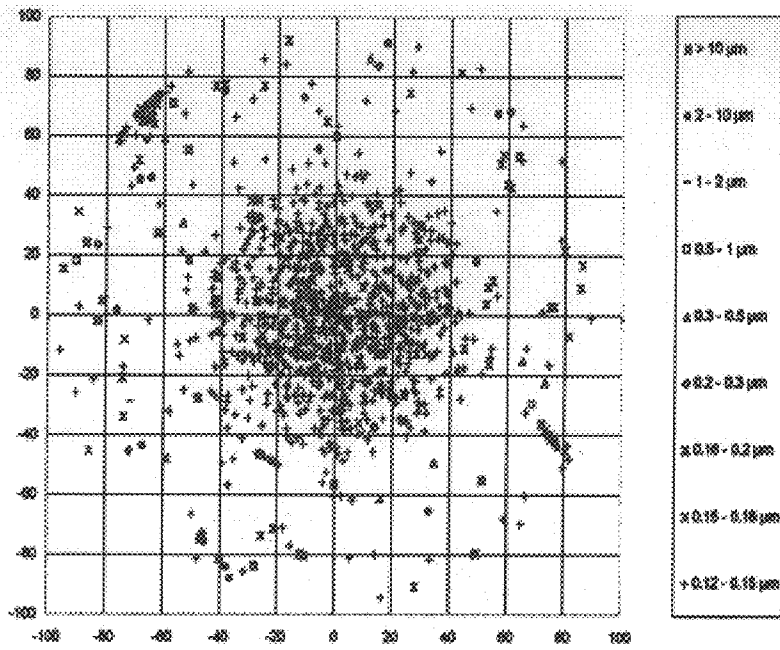


FIG. 27

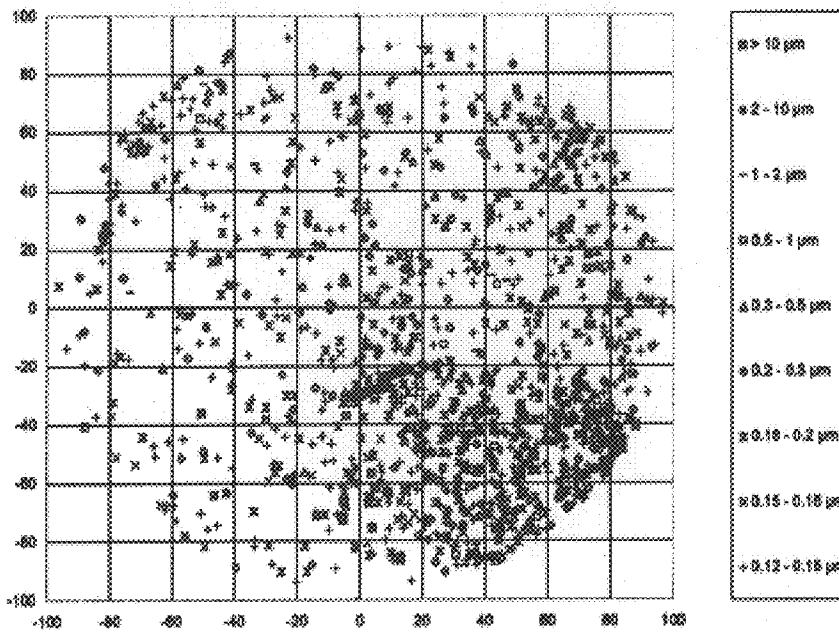


FIG. 28

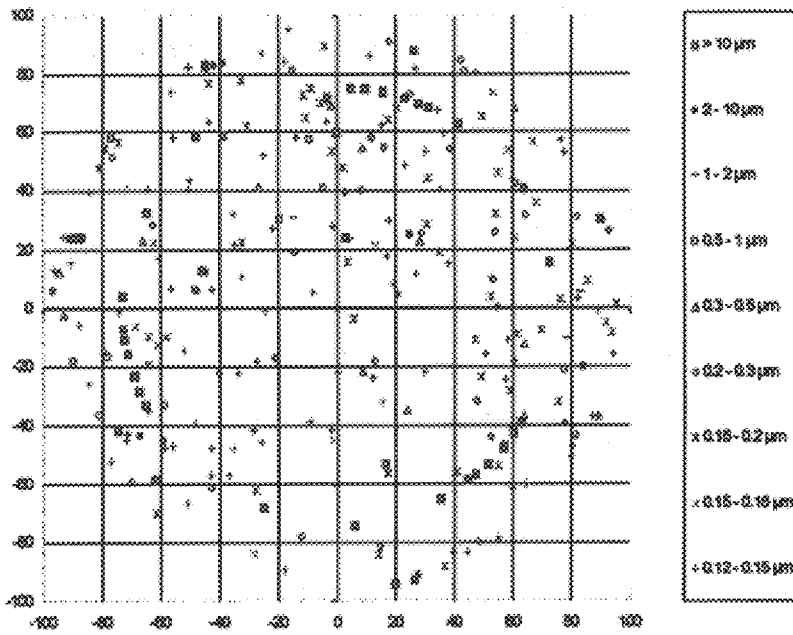


FIG. 29

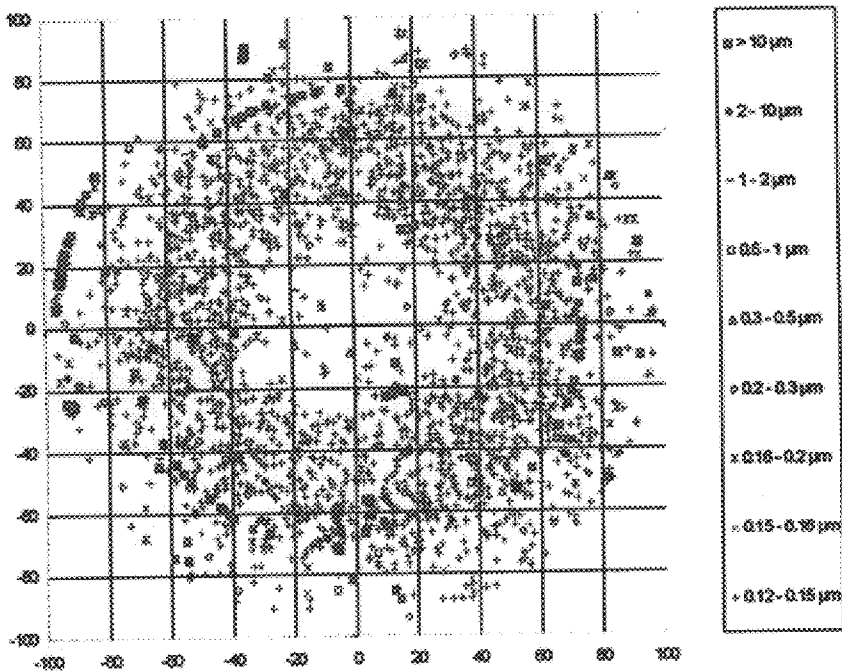


FIG. 30

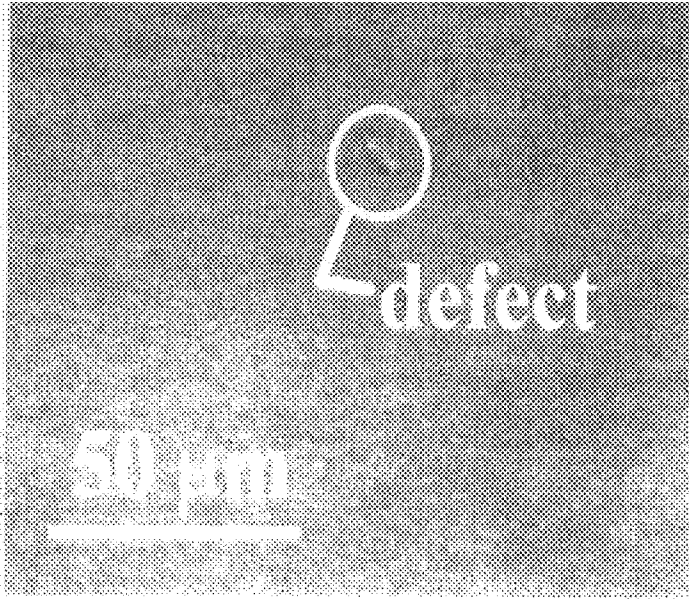
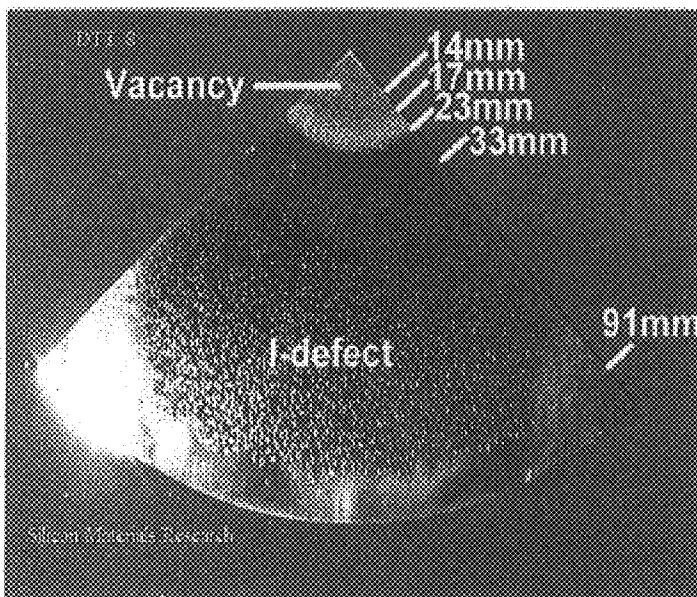


FIG. 31



**EPITAXIAL SILICON WAFERS
SUBSTANTIALLY FREE OF GROWN-IN
DEFECTS**

REFERENCE TO RELATED APPLICATION

This application claims priority from U.S. provisional application Ser. No. 60/104,288, filed on Oct. 14, 1998.

BACKGROUND OF THE INVENTION

The process of the present invention relates generally to the preparation of epitaxial silicon wafers. More particularly, the present invention relates to the preparation of a set of epitaxial silicon wafers assembled in a wafer cassette, boat or other wafer carrier, each wafer having an epitaxial layer which is substantially free of grown-in defects caused by the presence of agglomerated silicon self-interstitial defects on a surface of a substrate upon which the epitaxial layer is grown.

Single crystal silicon, from which a single crystal silicon wafer may be obtained, is commonly prepared by the so-called Czochralski ("Cz") method. In this method, polycrystalline silicon ("polysilicon") is charged to a crucible and melted, a seed crystal is brought into contact with the molten silicon and a single crystal is grown by slow extraction. After formation of a neck is complete, the diameter of the crystal is enlarged by decreasing the pulling rate and/or the melt temperature until the desired or target diameter is reached. The cylindrical main body of the crystal which has an approximately constant diameter is then grown by controlling the pull rate and the melt temperature while compensating for the decreasing melt level. Near the end of the growth process but before the crucible is emptied of molten silicon, the crystal diameter must be reduced gradually to form an end-cone. Typically, the end-cone is formed by increasing the crystal pull rate and heat supplied to the crucible. When the diameter becomes small enough, the crystal is then separated from the melt.

In recent years, it has been recognized that a number of defects in single crystal silicon form in the crystal growth chamber as the crystal cools after solidification. Such defects arise, in part, due to the presence of an excess (i.e., a concentration above the solubility limit) of intrinsic point defects, which are known as vacancies and self-interstitials. Silicon crystals grown from a melt are typically grown with an excess of one or the other type of intrinsic point defect, either crystal lattice vacancies ("V") or silicon self-interstitials ("I"). It has been suggested that the type and initial concentration of these point defects in the silicon are determined at the times of solidification and, if these concentrations reach a level of critical supersaturation in the system and the mobility of the point defects is sufficiently high, a reaction, or an agglomeration event, will likely occur. Agglomerated intrinsic point defects in silicon can severely impact the yield potential of the material in the production of complex and highly integrated circuits.

Vacancy-type defects are recognized to be the origin of such observable crystal defects as D-defects, Flow Pattern Defects (FPDs), Gate Oxide Integrity (GOI) Defects, Crystal Originated Particle (COP) Defects, crystal originated Light Point Defects (LPDs), as well as certain classes of bulk defects observed by infrared light scattering techniques such as Scanning Infrared Microscopy and Laser Scanning Tomography. Also present in regions of excess vacancies are defects which act as the nuclei for ring oxidation induced stacking faults (OISF). It is speculated that this particular defect is a high temperature nucleated oxygen agglomerate catalyzed by the presence of excess vacancies.

Defects relating to self-interstitials are less well studied. They are generally regarded as being low densities of interstitial-type dislocation loops or networks. Such defects are not responsible for gate oxide integrity failures, an important wafer performance criterion, but they are widely recognized to be the cause of other types of device failures usually associated with current leakage problems.

Epitaxial silicon growth typically involves a chemical vapor deposition process wherein a substrate, such as a single crystal silicon wafer, is heated while a gaseous silicon compound is passed over the wafer surface to affect pyrolysis or decomposition. When a single crystal silicon wafer is used as the substrate, the silicon is deposited in such a way as to continue the growth of the single crystal structure. As a result, defects present on the substrate surface, such as agglomerated silicon self-interstitial defects, may directly impact the quality of the resulting epitaxial wafer. This impact on quality is due to the fact that, by continuing the growth of the single crystal structure, defects present on the substrate surface may continue growth, resulting in the formation of new crystal defects, i.e., grown-in defects, in the epitaxial layer. For example, epitaxial defects such as mounds, epitaxial stacking faults and hillocks, having a maximum cross-sectional width ranging from the current detection limit of a laser-based auto-inspection device of about 0.1 microns to greater than about 10 microns, can be formed.

To date, the primary approach to the grown-in defect problem has been to inspect the surface of the substrate prior to epitaxial deposition. However, such an approach is time consuming; it is also not always successfully in identifying and eliminating problem substrates prior to the deposition process. Accordingly, a need continues to exist for a process whereby substrates are reliably and consistently provided for epitaxial deposition which have surfaces that are substantially free of agglomerated interstitial defects, and thus eliminate the grown-in defects associated therewith.

SUMMARY OF THE INVENTION

Among the objects of the present invention, therefore, is the provision of a set of epitaxial silicon wafers assembled in a wafer cassette, boat or other wafer carrier, each wafer having an epitaxial layer which is substantially free of grown-in defects; the provision of such an epitaxial wafer having a single crystal silicon substrate with an axially symmetric region which is substantially free of agglomerated silicon self-interstitial defects; the provision of such a substrate which may additionally have an axially symmetric region of vacancy dominated material which is substantially free of agglomerated vacancy defects.

Briefly, therefore, the present invention is directed to a set of epitaxial silicon wafers, each epitaxial wafer comprising a single crystal silicon substrate having an epitaxial silicon layer deposited thereon. The substrate has a central axis, a front surface and a back surface which are generally perpendicular to the central axis, a circumferential edge, and a radius extending from the central axis to the circumferential edge. The substrate comprises an axially symmetric region of silicon self-interstitial dominated material which is substantially free of agglomerated interstitial defects, the axially symmetric region extending radially inwardly from the circumferential edge of the substrate. The epitaxial layer deposited upon a surface of the substrate is substantially free of grown-in defects caused by the presence of agglomerated interstitial defects on the surface of the substrate.

Other objects will be in part apparent and in part pointed out hereinafter.

BRIEF DESCRIPTION OF THE DRAWINGS

FIG. 1 is a graph which shows an example of how the initial concentration of self-interstitials, [I], and vacancies, [V], changes with an increase in the value of the ratio v/G_0 , where v is the growth rate and G_0 is the average axial temperature gradient.

FIG. 2 is a graph which shows an example of how ΔG_f , the change in free energy required for the formation of agglomerated interstitial defects, increases as the temperature, T , decreases for a given initial concentration of self-interstitials, [I].

FIG. 3 is a graph which shows an example of how the initial concentration of self-interstitials, [I], and vacancies, [V], can change along the radius of an ingot or wafer, as the value of the ratio v/G_0 decreases, due to an increase in the value of G_0 . Note that at the V/I boundary a transition occurs from vacancy dominated material to self-interstitial dominated material.

FIG. 4 is a top plan view of a single crystal silicon ingot or wafer showing regions of vacancy, V, and self-interstitial, I, dominated materials respectively, as well as the V/I boundary that exists between them.

FIG. 5 is a longitudinal, cross-sectional view of a single crystal silicon ingot showing, in detail, an axially symmetric region of a constant diameter portion of the ingot.

FIG. 6 is an image produced by a scan of the minority carrier lifetime of an axial cut of a 200 mm diameter ingot following a series of oxygen precipitation heat treatments, showing in detail a generally cylindrical region of vacancy dominated material, a generally annular shaped axially symmetric region of self-interstitial dominated material, the V/I boundary present between them, and a region of agglomerated interstitial defects.

FIG. 7 is a graph of pull rate (i.e., seed lift) as a function of crystal length, showing how the pull rate is decreased linearly over a portion of the length of the crystal.

FIG. 8 is an image produced by a scan of the minority carrier lifetime of an axial cut of the ingot following a series of oxygen precipitation heat treatments, as described in Example 1.

FIG. 9 is a graph of pull rate as a function of crystal length for each of four single crystal silicon ingots, labeled 1-4 respectively, which are used to yield a curve, labeled $v^*(Z)$, as described in Example 1.

FIG. 10 is a graph of the average axial temperature gradient at the melt/solid interface, G_0 , as a function of radial position, for two different cases as described in Example 2.

FIG. 11 is a graph of the initial concentration of vacancies, [V], or self-interstitials, [I], as a function of radial position, for two different cases as described Example 2.

FIG. 12 is a graph of temperature as a function of axial position, showing the axial temperature profile in ingots for two different cases as described in Example 3.

FIG. 13 is a graph of the self-interstitial concentrations resulting from the two cooling conditions illustrated in FIG. 12 and as more fully described in Example 3.

FIG. 14 is an image produced by a scan of the minority carrier lifetime of an axial cut of an entire ingot following a series of oxygen precipitation heat treatments, as described in Example 4.

FIG. 15 is a graph illustrating the position of the V/I boundary as a function of the length of the single crystal silicon ingot, as described in Example 5.

FIG. 16a is an image produced by a scan of the minority carrier lifetime of an axial cut of a segment of an ingot, ranging from about 100 mm to about 250 mm from the shoulder of the ingot, following a series of oxygen precipitation heat treatments, as described in Example 6.

FIG. 16b is an image produced by a scan of the minority carrier lifetime of an axial cut of a segment of an ingot, ranging from about 250 mm to about 400 mm from the shoulder of the ingot, following a series of oxygen precipitation heat treatments, as described in Example 6.

FIG. 17 is a graph of the axial temperature gradient, G_0 , at various axial positions for an ingot, as described in Example 7.

FIG. 18 is a graph of the radial variations in the average axial temperature gradient, G_0 , at various axial positions for an ingot, as described in Example 7.

FIG. 19 is a graph illustrating the relationship between the width of the axially symmetric region and the cooling rate, as described in Example 7.

FIG. 20 is a photograph of an axial cut of a segment of an ingot, ranging from about 235 mm to about 350 mm from the shoulder of the ingot, following copper decoration and a defect-delineating etch, described in Example 7.

FIG. 21 is a photograph of an axial cut of a segment of an ingot, ranging from about 305 mm to about 460 mm from the shoulder of the ingot, following copper decoration and a defect-delineating etch, described in Example 7.

FIG. 22 is a photograph of an axial cut of a segment of an ingot, ranging from about 140 mm to about 275 mm from the shoulder of the ingot, following copper decoration and a defect-delineating etch, described in Example 7.

FIG. 23 is a photograph of an axial cut of a segment of an ingot, ranging from about 600 mm to about 730 mm from the shoulder of the ingot, following copper decoration and a defect-delineating etch, described in Example 7.

FIG. 24 is a graph illustrating the radial variations in the average axial temperature gradient, $G_0(r)$, from the center of the ingot to about one-half of the ingot radius (determined by averaging the gradient from the solidification temperature to the temperature on the x-axis), which may occur in hot zones of various configurations.

FIG. 25 is a graph illustrating the axial temperature profile for an ingot in four different hot zone configurations.

FIG. 26 is an overlay graph (i.e., a stacked map) illustrating the results of light scatter defect analyses of 12 Czochralski p-type single crystal silicon substrate wafers, as described in Example 8.

FIG. 27 is an overlay graph (i.e., a stacked map) illustrating the results of light scatter defect analyses of 13 Czochralski p-type single crystal silicon substrate wafers, as described in Example 8.

FIG. 28 is an overlay graph (i.e., a stacked map) illustrating the results of light scatter defect analyses of 12 epitaxial silicon wafers, corresponding to the 12 substrates of FIG. 26, as described in Example 8.

FIG. 29 is an overlay graph (i.e., a stacked map) illustrating the results of light scatter defect analyses of 13 epitaxial silicon wafers, corresponding to the 13 substrates of FIG. 27, as described in Example 8.

FIG. 30 is a photograph of a grown-in defect present on the surface of the epitaxial layer, as observed under the magnification of a microscope, as described in Example 8.

FIG. 31 is a photograph of a segment of a quarter portion of an ingot following copper decoration and a defect-delineating etch, as described in Example 8.

DETAILED DESCRIPTION OF THE
INVENTION

In accordance with the process of the present invention, it has been discovered that the formation of an epitaxial silicon wafer having an epitaxial layer which is substantially free of grown-in defects can be achieved by using as the substrate a single crystal silicon wafer which contains a first axially region that is substantially free of agglomerated silicon self-interstitial intrinsic point defects. Without being held to any particular theory, it is currently believed that a significant cause of grown-in defects in the epitaxial layer of an epitaxial silicon wafer is the presence of agglomerated interstitial defects at the surface of a single crystal silicon substrate, upon which the epitaxial layer is grown. Such agglomerated interstitial defects, which may be present in the form of dislocation loops or tangles for example, are believed to lead to corresponding defect sites, commonly referred to as "hillocks," in the epitaxial layer following epitaxial deposition. Formation of grown-in defects such as these is a result of defect propagation through the epitaxial layer. Accordingly, it is believed that an improved epitaxial layer may be prepared by utilizing a single crystal silicon substrate which is substantially free of agglomerated interstitial defects.

Substrate

Based upon experimental evidence to date, it appears that the type and initial concentration of intrinsic point defects, such as silicon lattice vacancies or silicon self-interstitials, in single crystal silicon wafers are initially determined as the ingot, from which these wafers are obtained, cools from the temperature of solidification (i.e., about 1410° C.) to a temperature greater than 1300° C. (i.e., at least about 1325° C., at least about 1350° C. or even at least about 1375° C.) ; that is, the type and initial concentration of these defects are controlled by the ratio v/G_0 , where v is the growth velocity and G_0 is the average axial temperature gradient over this temperature range.

Referring now to FIG. 1, for increasing values of v/G_0 , a transition from decreasingly self-interstitial dominated growth to increasingly vacancy dominated growth occurs near a critical value of v/G_0 which, based upon currently available information, appears to be about $2.1 \times 10^{-5} \text{ cm}^2/\text{sK}$, where G_0 is determined under conditions in which the axial temperature gradient is constant within the temperature range defined above. At this critical value, the concentrations of these intrinsic point defects are at equilibrium. However, as the value of v/G_0 exceeds the critical value, the concentration of vacancies increases. Likewise, as the value of v/G_0 falls below the critical value, the concentration of self-interstitials increases. If these concentrations reach a level of critical supersaturation in the system, and if the mobility of the point defects is sufficiently high, a reaction, or an agglomeration event, will likely occur.

Accordingly, as reported elsewhere (see, e.g., PCT/US98/07365 and PCT/US98/07304), it has been discovered that the reactions in which vacancies within the silicon matrix react to produce agglomerated vacancy defects and in which self-interstitials within the silicon matrix react to produce agglomerated interstitial defects can be suppressed. Without being bound to a particular theory, it is generally believed that these reactions can be suppressed if the concentration of vacancies and self-interstitials is controlled during the growth and cooling of the crystal ingot, such that the change in free energy (ΔG) of the system never exceeds a critical value at which these agglomeration reactions spontaneously occur. In other words, it is believed that the agglomeration of vacancies and interstitials can be avoided as the ingot

cools from the temperature of solidification by preventing the system from becoming critically supersaturated in vacancies or interstitials.

Preventing the formation of such defects can be achieved by establishing an initial concentration of vacancies or interstitials (controlled by $v/G_0(r)$, where $v/G_0(r)$ represents v/G_0 as a function of radial position, as further discussed below) which is sufficiently low such that critical supersaturation is never achieved. In practice, however, such concentrations are difficult to achieve across an entire crystal radius and, in general therefore, critical supersaturation may be avoided by suppressing the initial vacancy concentration or the initial interstitial concentration subsequent to crystal solidification (i.e., subsequent to establishing the initial concentration as determined by $v/G_0(r)$).

Due to the relatively large mobility of self-interstitials (which is generally about $10^{-4} \text{ cm}^2/\text{second}$), and to a lesser extent the mobility of vacancies, it is possible to affect the suppression of interstitials and vacancies over relatively large distances (i.e., distances of about 5 cm to about 10 cm or more) by the radial diffusion of self-interstitials to sinks located at the crystal surface or to vacancy dominated regions located within the crystal. Radial diffusion can be effectively used to suppress the concentration of self-interstitials and vacancies, provided sufficient time is allowed for the radial diffusion of the initial concentration of intrinsic point defects. In general, the diffusion time will depend upon the radial variation in the initial concentration of self-interstitials and vacancies, with lesser radial variations requiring shorter diffusion times.

Typically, the average axial temperature gradient, G_0 , increases as a function of increasing radius for single crystal silicon which is grown according to the Czochralski method. This means that the value of v/G_0 is typically not singular across the radius of an ingot. As a result of this variation, the type and initial concentration of intrinsic point defects are not constant. If the critical value of v/G_0 denoted in FIGS. 3 and 4 as the V/I boundary 2, is reached at some point along the radius 4 of the ingot, the material will switch from being vacancy dominated to self-interstitial dominated. In addition, the ingot will contain an axially symmetric region of self-interstitial dominated material 6 (in which the initial concentration of silicon self-interstitial atoms increases as a function of increasing radius), surrounding a generally cylindrical region of vacancy dominated material 8 (in which the initial concentration of vacancies decreases as a function of increasing radius).

As an ingot containing a V/I boundary is cooled from the temperature of solidification, radial diffusion of interstitial atoms and vacancies causes a radially inward shift in the V/I boundary due to a recombination of self-interstitials with vacancies. In addition, radial diffusion of self-interstitials to the surface of the crystal will occur as the crystal cools. The surface of the crystal is capable of maintaining near equilibrium point defect concentrations as the crystal cools. Radial diffusion of point defects will tend to reduce the self-interstitial concentration outside the V/I boundary and the vacancy concentration inside the V/I boundary. If enough time is allowed for diffusion, therefore, the concentration of vacancy and interstitials everywhere may be such that ΔG_v and ΔG_i will be less than the critical values at which the vacancy agglomeration reaction and the interstitial agglomeration reactions occur.

Referring now to FIG. 5, the crystal growth conditions (including growth velocity, v , average axial temperature gradient, G_0 , and the cooling rate) are preferably controlled to cause the formation of a single crystal silicon ingot 10,

grown in accordance with the Czochralski method, comprising a central axis **12**, a seed-cone **14**, an end-cone **16** and a constant diameter portion **18** between the seed-cone and the end-cone. The constant diameter portion has a circumferential edge **20** and a radius **4** extending from the central axis **12** to the circumferential edge **20**. The crystal growth conditions may be controlled to cause the formation of (i) a substantially defect-free axially symmetric region of interstitial dominated material **6** and/or (ii) a generally cylindrical region of vacancy dominated material **8**, which may also contain a substantially defect-free axially symmetric region **9**. When present, the axially symmetric regions **6** and **9** may have varying widths, as further discussed in detail below.

The growth velocity, v , and the average axial temperature gradient, G_0 , (as previously defined) are typically controlled such that the ratio v/G_0 ranges in value from about 0.5 to about 2.5 times the critical value of v/G_0 (i.e., about 1×10^{-5} cm²/sK to about 5×10^{-5} cm²/sK based upon currently available information for the critical value of v/G_0). Preferably, the ratio v/G_0 will range in value from about 0.6 to about 1.5 times the critical value of v/G_0 (i.e., about 1.3×10^{-5} cm²/sK to about 3×10^{-5} cm²/sK based upon currently available information for the critical value of v/G_0). Most preferably, the ratio v/G_0 will range in value from about 0.75 to about 1.25 times the critical value of v/G_0 (i.e., about 1.6×10^{-5} cm²/sK to about 2×10^{-5} cm²/sK based upon currently available information for the critical value of v/G_0). In one particularly preferred embodiment, v/G_0 within the generally cylindrical region **9** has a value falling between the critical value of v/G_0 and 1.1 times the critical value of v/G_0 , while in another preferred embodiment v/G_0 within the generally cylindrical region **6** has a value falling between the about 0.75 times the critical value of v/G_0 and the critical value of v/G_0 .

To maximize the width of the axially symmetric region **6**, and/or **9**, it is preferred that the ingot be cooled from the solidification temperature to a temperature in excess of about 1050° C. over a period of (i) at least about 5 hours, preferably at least about 10 hours, and more preferably at least about 15 hours for 150 mm nominal diameter silicon crystals, (ii) at least about 5 hours, preferably at least about 10 hours, more preferably at least about 20 hours, still more preferably at least about 25 hours, and most preferably at least about 30 hours for 200 mm nominal diameter silicon crystals, and (iii) at least about 20 hours, preferably at least about 40 hours, more preferably at least about 60 hours, and most preferably at least about 75 hours for silicon crystals having a nominal diameter greater than 200 mm. Control of the cooling rate can be achieved by using any means currently known in the art for minimizing heat transfer, including the use of insulators, heaters, radiation shields, and magnetic fields.

Control of the average axial temperature gradient, G_0 , may be achieved through the design of the "hot zone" of the crystal puller (i.e., the graphite, or other materials, that makes up the heater, insulation, heat and radiation shields, among other things). Although the design particulars may vary depending upon the make and model of the crystal puller, in general, G_0 may be controlled using any of the means currently known in the art for controlling heat transfer at the melt/solid interface, including reflectors, radiation shields, purge tubes, light pipes, and heaters. In general, radial variations in G_0 are minimized by positioning such an apparatus within about one crystal diameter above the melt/solid interface. G_0 can be controlled further by adjusting the position of the apparatus relative to the melt and crystal. This is accomplished either by adjusting the position

of the apparatus in the hot zone, or by adjusting the position of the melt surface in the hot zone. In addition, when a heater is employed, G_0 may be further controlled by adjusting the power supplied to the heater. Any, or all, of these methods can be used during a batch Czochralski process in which melt volume is depleted during the process.

It is generally preferred for some embodiments of the process for preparing a substantially defect-free substrate wafer that the average axial temperature gradient, G_0 , be relatively constant as a function of the diameter of the ingot. However, it should be noted that as improvements in hot zone design allow for variations in G_0 to be minimized, mechanical issues associated with maintaining a constant growth rate become an increasingly important factor. This is because the growth process becomes much more sensitive to any variation in the pull rate, which in turn directly affects the growth rate, v . In terms of process control, this means that it is favorable to have values for G_0 which differ over the radius of the ingot. Significant differences in the value of G_0 , however, can result in a large concentration of self-interstitials generally increasing toward the wafer edge and, thereby, increase the difficulty in avoiding the formation of agglomerated intrinsic point defects.

In view of the foregoing, the control of G_0 involves a balance between minimizing radial variations in G_0 and maintaining favorable process control conditions. Typically, therefore, the pull rate after about one diameter of the crystal length will range from about 0.2 mm/minute to about 0.8 mm/minute. Preferably, the pull rate will range from about 0.25 mm/minute to about 0.6 mm/minute and, more preferably, from about 0.3 mm/minute to about 0.5 mm/minute. It is to be noted that the pull rate is dependent upon both the crystal diameter and crystal puller design. The stated ranges are typical for 200 mm diameter crystals. In general, the pull rate will decrease as the crystal diameter increases. However, the crystal puller may be designed to allow pull rates in excess of those stated here. As a result, most preferably the crystal puller will be designed to enable the pull rate to be as fast as possible while still allowing for the formation of an axially symmetric region in accordance with the present invention.

The amount of self-interstitial diffusion is controlled by controlling the cooling rate as the ingot is cooled from the solidification temperature (about 1410° C.) to the temperature at which silicon self-interstitials become immobile, for commercially practical purposes. Silicon self-interstitials appear to be extremely mobile at temperatures near the solidification temperature of silicon, i.e., about 1410° C. This mobility, however, decreases as the temperature of the single crystal silicon ingot decreases. Generally, the diffusion rate of self-interstitials slows such a considerable degree that they are essentially immobile for commercially practical time periods at temperatures less than about 700° C., and perhaps at temperatures as great as 800° C., 900° C., 1000° C., or even 1050° C.

It is to be noted in this regard that, although the temperature at which a self-interstitial agglomeration reaction occurs may in theory vary over a wide range of temperatures, as a practical matter this range appears to be relatively narrow for conventional, Czochralski-grown silicon. This is a consequence of the relatively narrow range of initial self-interstitial concentrations which are typically obtained in silicon grown according to the Czochralski method. In general, therefore, a self-interstitial agglomeration reaction may occur, if at all, at temperatures within the range of about 1100° C. to about 800° C., and typically at a temperature of about 1050° C.

Accordingly, within the range of temperatures at which self-interstitials appear to be mobile, and depending upon the temperature in the hot zone, the cooling rate will typically range from about 0.1° C./minute to about 3° C./minute. Preferably, the cooling rate will range from about 0.1° C./minute to about 1.5° C./minute, more preferably from about 0.1° C./minute to about 1° C./minute, and still more preferably from about 0.1° C./minute to about 0.5° C./minute.

By controlling the cooling rate of the ingot within a range of temperatures in which self-interstitials appear to be mobile, the self-interstitials may be given more time to diffuse to sinks located at the crystal surface, or to vacancy dominated regions, where they may be annihilated. The concentration of such interstitials may therefore be suppressed, which act to prevent an agglomeration event from occurring. Utilizing the diffusivity of interstitials, by controlling the cooling rate, acts to relax the otherwise stringent v/G_0 requirements that may be required, in order to obtain an axially symmetric region substantially free of agglomerated defects. Stated another way, as a result of the fact that the cooling rate may be controlled in order to allow interstitials more time to diffuse, a larger range of v/G_0 values, relative to the critical value, are acceptable for purposes of obtaining an axially symmetric region free of agglomerated defects.

To achieve such cooling rates over appreciable lengths of the constant diameter portion of the crystal, consideration must also be given to the growth process of the end-cone of the ingot, as well as the treatment of the ingot once end-cone growth is complete. Typically, upon completion of the growth of the constant diameter portion of the ingot, the pull rate will be increased in order to begin the tapering necessary to form the end-cone. However, such an increase in pull rate will result in the lower segment of the constant diameter portion cooling more quickly within the temperature range in which interstitials are sufficiently mobile, as discussed above. As a result, these interstitials may not have sufficient time to diffuse to sinks to be annihilated; that is, the concentration in this lower segment may not be suppressed to a sufficient degree and agglomeration of interstitial defects may result.

In order to prevent the formation of such defects from occurring in this lower segment of the ingot, it is therefore preferred that the constant diameter portion of the ingot have a uniform thermal history in accordance with the Czochralski method. A uniform thermal history may be achieved by pulling the ingot from the silicon melt at a relatively constant rate during the growth of not only the constant diameter portion, but also during the growth of the end-cone of the crystal and possibly subsequent to growth of the end-cone. More specifically, it is preferred that when the growth of the end-cone is initiated a pull rate for the end-cone is established which ensures any segment of the constant diameter portion of the ingot remaining at a temperature in excess of about 1050° C. will experience the same thermal history as other segments of the constant diameter portion of the ingot which contain an axially symmetric region free of agglomerated intrinsic point defects which have already been cooled to a temperature of less than about 1050° C. A relatively constant rate may be achieved, for example, by (i) reducing the rates of rotation of the crucible and crystal during the growth of the end-cone relative to the crucible and crystal rotation rates during the growth of the constant diameter portion of the crystal, and/or (ii) increasing the power supplied to the heater used to heat the silicon melt during the growth of the end-cone relative to the power

conventionally supplied during end-cone growth. These additional adjustments of the process variables may occur either individually or in combination.

As previously noted, a minimum radius of the vacancy dominated region exists for which the suppression of agglomerated interstitial defects may be achieved. The value of the minimum radius depends on v/G_0 (r) and the cooling rate. As crystal puller and hot zone designs will vary, the ranges presented above for v/G_0 (r), pull rate, and cooling rate will also vary. Likewise these conditions may vary along the length of a growing crystal. Also as noted above, the width of the interstitial dominated region free of agglomerated interstitial defects is preferably maximized. Thus, it is desirable to maintain the width of this region to a value which is as close as possible to, without exceeding, the difference between the crystal radius and the minimum radius of the vacancy dominated region along the length of the growing crystal in a given crystal puller.

The crystal pull rate profile needed in order to maximize the width of axially symmetric region 6, and optionally 9, for a given crystal puller hot zone design may be determined empirically. Generally speaking, this empirical approach involves first obtaining readily available data on the axial temperature profile for an ingot grown in a particular crystal puller, as well as the radial variations in the average axial temperature gradient for an ingot grown in the same puller. Collectively, this data is used to pull one or more single crystal silicon ingots, which are then analyzed for the presence of agglomerated interstitial defects. In this way, an optimum pull rate profile can be determined.

In addition to the radial variations in v/G_0 resulting from an increase in G_0 over the radius of the ingot, v/G_0 may also vary axially as a result of a change in v , or as a result of natural variations in G_0 due to the Czochralski process. For a standard Czochralski process, v is altered as the pull rate is adjusted throughout the growth cycle, in order to maintain the ingot at a constant diameter. These adjustments, or changes, in the pull rate in turn cause v/G_0 to vary over the length of the constant diameter portion of the ingot. Accordingly, it is therefore desirable to control the pull rate in order to maximize the width of the axially symmetric region 6, and/or 9, in the ingot. As a result, however, variations in the radius of the ingot may occur. In order to ensure that the resulting ingot has a constant diameter, the ingot is therefore preferably grown to a diameter larger than that which is desired. The ingot is then subjected to processes standard in the art to remove excess material from the surface, thus ensuring that an ingot having a constant diameter portion is obtained.

Referring again to FIG. 5, substrate wafers of the present invention are sliced from a single crystal silicon ingot 10 which comprises a substantially defect-free region of interstitial dominated material 6, which may additionally surround a generally cylindrical region 8 of vacancy dominated material (a portion or all of which may be substantially defect-free as well). Alternatively, region 6 may extend from center to edge, or region 9 may extend from center to edge; that is, the width of substantially defect-free region 6 or region 9 may be about equal to the width of the ingot.

Axially symmetric region 6 generally has a width, as measured from circumferential edge 20 radially inward toward central axis 12, which in some embodiments is at least about 5%, 10%, 20% and even about 30% of the radius of the constant diameter portion of the ingot, while in other embodiments it is at least about 40%, at least about 60%, or preferably even at least about 80% of the radius. Additionally, when present, the axially symmetric region 9

generally has a width, as measured along the radius extending from V/I boundary 2 to axis 12, which is at least about 15 mm in width, preferably at least about 7.5%, more preferably at least about 15%, still more preferably at least about 25%, and most preferably at least about 50% of the radius of the constant diameter portion of the ingot. In a particularly preferred embodiment, axially symmetric region 9 includes axis 12 of the ingot, i.e., the axially symmetric region 9 and generally cylindrical region 8 coincide.

Axially symmetric regions 6 and 9 typically extend over a length of at least about 20% of the length of the constant diameter portion of the ingot. Preferably, however, these regions have lengths of at least about 40%, more preferably at least about 60%, and still more preferably at least about 80% of the length of the constant diameter portion of the ingot.

It is to be noted that the width of axially symmetric regions 6 and 9 may have some variation along the length of the central axis 12. For an axially symmetric region 6 of a given length, therefore, the width is determined by measuring the distance from the circumferential edge 20 of the ingot 10 radially toward a point which is farthest from the central axis. Similarly, the width of axially symmetric region 9 is determined by measuring the distance from the V/I boundary 2 radially toward a point which is farthest from the central axis. In other words, the width for each region is measured such that the minimum distance within the given length of the axially symmetric region 6 or 9 is determined.

For an ingot having a V/I boundary, i.e., an ingot containing material which is vacancy dominated, low oxygen content material, i.e., less than about 13 PPMA (parts per million atomic, ASTM standard F-121-83), is typically preferred. More preferably, the single crystal silicon contains less than about 12 PPMA oxygen, still more preferably less than about 11 PPMA oxygen, and most preferably less than about 10 PPMA oxygen. A low oxygen content is preferred because, in medium to high oxygen contents wafers (i.e., 14 PPMA to 18 PPMA), the formation of oxygen-induced stacking faults and bands of enhanced oxygen clustering just inside the V/I boundary becomes more pronounced, which may also be detrimental to the epitaxial layer.

The effects of enhanced oxygen clustering may be further reduced by a number of methods, used singularly or in combination. For example, oxygen precipitate nucleation centers typically form in silicon which is annealed at a temperature in the range of about 350° C. to about 750° C. For some applications, therefore, it may be preferred that the crystal be a "short" crystal, that is, a crystal which has been grown in a Czochralski process until the seed end has cooled from the melting point of silicon (about 1410° C.) to about 750° C. after which the ingot is rapidly cooled. In this way, the time spent in the temperature range critical for nucleation center formation is kept to a minimum and the oxygen precipitate nucleation centers have inadequate time to form in the crystal puller.

Preferably, however, oxygen precipitate nucleation centers formed during the growth of the single crystal are dissolved by annealing the single crystal silicon. Provided they have not been subjected to a stabilizing heat-treatment, oxygen precipitate nucleation centers can be annealed out of silicon by rapidly heating the silicon to a temperature of at least about 875° C., and preferably continuing to increase the temperature to at least 1000° C., at least 1100° C., or more. By the time the silicon reaches 1000° C., substantially all (e.g., >99%) of such defects have annealed out. It is

important that the wafers be rapidly heated to these temperatures, i.e., that the rate of temperature increase be at least about 10° C. per minute and more preferably at least about 50° C. per minute. Otherwise, some or all of the oxygen precipitate nucleation centers may be stabilized by the heat-treatment. Equilibrium appears to be reached in relatively short periods of time, i.e., on the order of about 60 seconds or less. Accordingly, oxygen precipitate nucleation centers in the single crystal silicon may be dissolved by annealing it at a temperature of at least about 875° C., preferably at least about 950° C., and more preferably at least about 1100° C., for a period of at least about 5 seconds, and preferably at least about 10 minutes.

The dissolution may be carried out in a conventional furnace or in a rapid thermal annealing (RTA) system. The rapid thermal anneal of silicon may be carried out in any of a number of commercially available rapid thermal annealing ("RTA") furnaces in which wafers are individually heated by banks of high power lamps. RTA furnaces are capable of rapidly heating a silicon wafer, e.g., they are capable of heating a wafer from room temperature to 1200° C. in a few seconds. One such commercially available RTA furnace is the model 610 furnace available from AG Associates (Mountain View, Calif.) In addition, the dissolution may be carried out on silicon ingots or on silicon wafers, preferably wafers.

Epitaxial Layer

An epitaxial layer may be deposited or grown on a surface of the above-described substrate by means known in the art. (See, e.g., U.S. Pat. No. 5,789,309.) Typically, growth of the epitaxial layer is achieved by chemical vapor deposition because this is one of the most flexible and cost efficient methods for growing epitaxial layers on semiconductor material. Generally speaking, chemical vapor deposition involves the introduction of volatile reactants (e.g., SiCl₄, SiHCl₃, SiH₂Cl₂ or SiH₄) with a carrier gas (usually hydrogen) into an epitaxial reactor. Although process conditions may vary, in the case of monocrystalline layer deposition the temperature will generally range between 1080° C. and 1150° C. In addition, the environment in which the deposition occurs is preferably clean (i.e., free of particulate contaminants) and has an oxygen content below 1 about PPMA.

In accordance with the present invention and as further illustrated by Example 8, below, experience to-date suggests that it is desirable to utilize a single crystal silicon substrate which is substantially free of agglomerated interstitial defects. Such a substrate is desirable because, during deposition, silicon material being deposited on the wafer surface tends to accumulate more rapidly at the sites of these agglomerated defects, as compared to the flat surface surrounding them. The deposition and accumulation of silicon material at these agglomerated defect sites result in the formation of grown-in defects, i.e., hillocks or stacking faults, within the epitaxial layer. Of particular concern are large area grown-in defects which have a diameter greater than or equal to about 10 microns, as measured by laser beam surface scanning equipment common in the art (see, e.g., Tencor 6200 series laser scanners, such as model 6220, commercially available from Tencor Inc. of Mountain View, Calif.).

Without being held to any particular theory, it is generally believed that defects in the epitaxial layer may result from a number of different causes. For example, particulate and other organic contaminants present on the substrate surface may, along with agglomerated interstitial defects, act as sites for silicon material to accumulate during deposition.

Accordingly, the present invention may be utilized in conjunction with other means, such as improved methods of substrate cleaning and handling, in an effort to fully eliminate defects within the epitaxial layer. However, if employed alone, the present invention effectively acts to eliminate a significant cause of epitaxial layer defects and, therefore, reduces the overall concentration of such defects.

As described above, the substrate of the present invention may contain an axially symmetric region of interstitial-type material which is substantially free of agglomerated interstitial defects. The width of this region may vary. Therefore, it is to be noted experience to-date suggests that, upon the completion of epitaxial deposition, the region of the substrate surface which is substantially free of agglomerated interstitial defects yields a corresponding region in the epitaxial layer which is substantially free of grown-in defects caused by these agglomerated defects. It is to be further noted, however, that this region of the epitaxial layer corresponds not only to the region of interstitial dominated material which is substantially defect-free, but also to a region of vacancy dominated material within the substrate. Stated another way, an improved epitaxial layer may be obtained by depositing the layer upon the surface of a wafer which is interstitial dominated and substantially defect-free center to edge, by depositing the layer upon a wafer which is vacancy dominated center to edge, or by depositing the layer upon a wafer which has an interstitial dominated region which is substantially defect-free surrounding a core region which is vacancy dominated.

Without being held to any particular theory, it is believed that the presence of agglomerated vacancy defects, also referred to as voids, at the surface of the substrate is not narrowly critical to the production of an epitaxial layer which is substantially free of grown-in defects. Rather, it is believed that as silicon material is deposited upon the substrate surface these voids are effectively covered or "filled." As a result, agglomerated vacancy defects are not propagated through the epitaxial layer. However, to ensure voids or "pits" are not present in the epitaxial layer surface, the epitaxial layer will generally have a thickness sufficient to cover the agglomerated vacancy defects present on the surface of the substrate, the thickness increasing as the size or depth of such defects increases. Typically, the thickness of the layer ranges from at least about 1 micron up to about 15 microns or more. Preferably, the epitaxial layer will have a thickness ranging from about 1 to about 10 microns, more preferably from about 1 to about 8 microns, still more preferably from about 1 to about 5 microns, and most preferably from about 1 to about 4 microns. In this regard it is to be noted that a thinner layer is preferred, provided agglomerated vacancy defects are effectively covered, because it acts to reduce the cost of the resulting epitaxial wafer.

Accordingly, the present invention enables a set of epitaxial silicon wafers to be assembled wherein each wafer comprises an epitaxial layer which is substantially free of grown-in defects caused by the presence of agglomerated interstitial defects on the surface of the substrate, upon which the epitaxial layer is deposited. More specifically, the present invention enables the assembly of a set of epitaxial silicon wafers wherein each wafer comprises a substrate having, as noted above, a first axially symmetric region of interstitial-type material which is substantially free of agglomerated defects, the region extending radially inward from the circumferential edge of the wafer. When the width of the axially symmetric region is less than equal to the radius of the substrate, the substrate additionally comprises

a second axially symmetric region of vacancy-type material, having a width and position as noted above, which may or may not contain agglomerated vacancy defects. Regardless of the width of the axially symmetric region of the substrate, after epitaxial deposition the resulting epitaxial layer is substantially free of this type of grown-in defect, as a result of utilizing such a substrate, across essentially the entire radius of the wafer; that is, the epitaxial layer is substantially free of grown-in defects over about 40%, 60%, 80%, 90% or more of the surface area of the epitaxial wafer.

It is to be noted that the present invention is advantageous in that the set of epitaxial wafers may be prepared and assembled using a sequence of substrates obtained from a single ingot, prepared in accordance with the present process. Stated another way, the present invention is advantageous because of the consistency and reliability of the process. The set of epitaxial wafers can be prepared and assembled from a set of substrates which have essentially been obtained sequentially from a single ingot. Therefore, a time consuming inspection process is not necessary in order to identify a suitable substrate (i.e., one substantially free of agglomerated interstitial defects) prior to epitaxial deposition. Likewise, because of the quality of the substrates being employed, a time consuming inspection process is not necessary in order to identify epitaxial wafers which are substantially free of these grown-in defects and, thus, is suitable for inclusion within a set.

The set of epitaxial wafers may be assembled, for example, in a wafer cassette of the type in which wafers are typically stored and shipped, in a boat of the type which are typically used for heat-treating silicon wafers, or in an equivalent wafer carrier. Wafers may be assembled in sets of 5, 10, 20, 25, 50 or more. Typically, however, wafers having diameters up to about 200 mm are currently assembled in sets of 25, while wafers having diameters of about 300 mm or more are currently assembled in sets of 13.

The process of the present invention may be particularly preferred as the diameter of the single crystal silicon ingot increases, as compared to conventional fast-pull methods wherein the ingot is grown at a high rate in an attempt to make the material entirely vacancy dominated. Without being held to any particular theory, it is generally believed that for ingots having relatively large diameters, (e.g., at least about 300 mm or more) it may not be possible to maintain a growth rate which is sufficiently high to ensure the silicon material is entirely vacancy dominated. Stated another way, as the diameter of the ingot increases, it is more likely that the constant diameter portion of the ingot will contain a segment having a region of interstitial dominated material. Growth conditions must therefore be appropriately controlled in order to prevent the formation of agglomerated interstitial defects within this region.

Visual Detection of Agglomerated Defects

Agglomerated defects may be detected by a number of different techniques. For example, Elow pattern defects, or D-defects, are typically detected by preferentially etching the single crystal silicon sample in a Secco etch solution for about 30 minutes, and then subjecting the sample to microscopic inspection. (See, e.g., H. Yamagishi et al., *Semicond. Sci. Technol.* 7, A135 (1992)). Although standard for the detection of agglomerated vacancy defects, this process may also be used to detect agglomerated interstitial defects. When this technique is used, such defects appear as large pits on the surface of the sample when present.

Agglomerated defects may also be detected using laser scattering techniques, such as laser scattering tomography, which typically have a lower defect density detection limit than other etching techniques.

Additionally, agglomerated intrinsic point defects may be visually detected by decorating these defects with a metal capable of diffusing into the single crystal silicon matrix upon the application of heat. Specifically, single crystal silicon samples, such as wafers, slugs or slabs, may be visually inspected for the presence of such defects by first coating a surface of the sample with a composition containing a metal capable of decorating these defects, such as a concentrated solution of copper nitrate. The coated sample is then heated to a temperature between about 900° C. and about 1000° C. for about 5 minutes to about 15 minutes in order to diffuse the metal into the sample. The heat-treated sample is then cooled to room temperature, thus causing the metal to become critically supersaturated and precipitate at sites within the sample matrix at which defects are present.

After cooling, the sample is first subjected to a non-defect delineating etch, in order to remove surface residue and precipitants, by treating the sample with a bright etch solution for about 8 to about 12 minutes. A typical bright etch solution comprises about 55 percent nitric acid (70% solution by weight), about 20 percent hydrofluoric acid (49% solution by weight), and about 25 percent hydrochloric acid (concentrated solution).

The sample is then rinsed with deionized water and subjected to a second etching step by immersing the sample in, or treating it with, a Secco or Wright etch solution for about 35 to about 55 minutes. Typically, the sample will be etched using a Secco etch solution comprising about a 1:2 ratio of 0.15 M potassium dichromate and hydrofluoric acid (49% solution by weight). This etching step acts to reveal, or delineate, agglomerated defects which may be present.

In general, regions of interstitial and vacancy dominated material free of agglomerated defects can be distinguished from each other and from material containing agglomerated defects by the copper decoration technique described above. Regions of defect-free interstitial dominated material contain no decorated features revealed by the etching whereas regions of defect-free vacancy dominated material (prior to a high-temperature oxygen nuclei dissolution treatment as described above) contain small etch pits due to copper decoration of the oxygen nuclei.

Definitions

As used herein, the phrase “substantially free of grown-in defects” shall mean that the epitaxial layer of the present invention does not contain grown-in defects, also referred to as hillocks or stacking faults, caused by the presence of agglomerated interstitial defects on the surface of the substrate, upon which the epitaxial layer is deposited, as determined by auto-inspection devices common in the art (see, e.g., Tencor 6220 laser inspection device) which currently have a grown-in defect detection limit of about 0.1 microns; and, “stacked mapped” shall refer to the technique whereby a series of sample epi wafers or substrates are analyzed using a laser inspection device and the results for each wafer within the series are overlaid, or “stacked,” on a single map to illustrate the radial position of defects within a series of wafers or substrates.

Additionally, as used herein, the following other phrases or terms shall have the given meanings: “agglomerated intrinsic point defects,” mean defects caused (i) by the reaction in which -vacancies agglomerate to produce D-defects, flow pattern defects, gate oxide integrity defects, crystal originated particle defects, crystal originated light point defects, and other such vacancy related defects, or (ii) by the reaction in which self-interstitials agglomerate to produce dislocation loops and networks, and other such self-interstitial related defects; “agglomerated interstitial

defects” shall mean agglomerated intrinsic point defects caused by the reaction in which silicon self-interstitial atoms agglomerate; “agglomerated vacancy defects” shall mean agglomerated vacancy point defects caused by the reaction in which crystal lattice vacancies agglomerate; “radius” means the distance measured from a central axis to a circumferential edge of a wafer or ingot; “substantially free of agglomerated intrinsic point defects” shall mean a concentration of agglomerated defects which is less than the detection limit of these defects, which is currently about 10^3 defects/cm³; “V/I boundary” means the position along the radius of an ingot or wafer at which the material changes from vacancy dominated to self-interstitial dominated; and “vacancy dominated” and “self-interstitial dominated” mean material in which the intrinsic point defects are predominantly vacancies or self-interstitials, respectively.

EXAMPLES

Examples 1 through 7 illustrate the preparation of a substrate wafer suitable for use in the present invention; that is, these Examples illustrate that a single crystal silicon ingot may be prepared in which, as the ingot cools from the solidification temperature in accordance with the Czochralski method, the agglomeration of intrinsic point defects is prevented within an axially symmetric region of the constant diameter portion of the ingot, from which substrate wafers for the present invention may be sliced. Example 8 illustrates the features of an epitaxial wafer of the present invention.

With regard to Examples 1 through 7, it is to be noted that these Examples set forth one set of conditions that may be used to achieve the desired result. Alternative approaches exist for determining an optimum pull rate profile for a given crystal puller. For example, rather than growing a series of ingots at various pull rates, a single crystal could be grown at pull rates which increase and decrease along the length of the crystal; in this approach, agglomerated self-interstitial defects would be caused to appear and disappear multiple times during growth of a single crystal. Optimal pull rates could then be determined for a number of different crystal positions.

All Examples are presented for illustrative purposes only and should therefore not be interpreted in a limiting sense. Substrate

Example 1

Optimization Procedure For A Crystal Puller Having A Pre-existing Hot Zone Design

A first 200 mm single crystal silicon ingot was grown under conditions in which the pull rate was ramped linearly from about 0.75 mm/min. to about 0.35 mm/min. over the length of the crystal. FIG. 7 shows the pull rate as a function of crystal length. Taking into account the pre-established axial temperature profile of a growing 200 mm ingot in the crystal puller and the pre-established radial variations in the average axial temperature gradient, G_0 , i.e., the axial temperature gradient at the melt/solid interface, these pull rates were selected to insure that ingot would be vacancy dominated material from the center to the edge at one end of the ingot and interstitial dominated material from the center to the edge of the other end of the ingot. The grown ingot was sliced longitudinally and analyzed to determine where the formation of agglomerated interstitial defects begins.

FIG. 8 is an image produced by a scan of the minority carrier lifetime of an axial cut of the ingot over a section

ranging from about 635 mm to about 760 mm from the shoulder of the ingot following a series of oxygen precipitation heat-treatments which reveal defect distribution patterns. At a crystal position of about 680 mm, a band of agglomerated interstitial defects 28 can be seen. This position corresponds to a critical pull rate of $v^*(680 \text{ mm})=0.33$ mm/min. At this point, the width of the axially symmetric region 6 (a region which is interstitial dominated material but which lacks agglomerated interstitial defects) is at its maximum; the width of the vacancy dominated region 8, $R_v^*(680)$ is about 35 mm and the width of the axially symmetric region, $R_i^*(680)$ is about 65 mm.

A series of four single crystal silicon ingots was then grown at steady state pull rates which were somewhat greater than and somewhat less than the pull rate at which the maximum width of the axially symmetric region of the first 200 mm ingot was obtained. FIG. 9 shows the pull rate as a function of crystal length for each of the four crystals, labeled, respectively, as 1-4. These four crystals were then analyzed to determine the axial position (and corresponding pull rate) at which agglomerated interstitial defects first appear or disappear. These four empirically determined points (marked "**") are shown in FIG. 9. Interpolation between and extrapolation from these points yielded a curve, labeled $v^*(Z)$ in FIG. 9. This curve represents, to a first approximation, the pull rate for 200 mm crystals as a function of length in the crystal puller at which the axially symmetric region is at its maximum width.

Growth of additional crystals at other pull rates and further analysis of these crystals would further refine the empirical definition of $v^*(Z)$.

Example 2

Reduction of Radial Variation in $G_0(r)$

FIGS. 10 and 11 illustrate the improvement in quality that can be achieved by reduction of the radial variation in the axial temperature gradient at the melt/solid interface, $G_0(r)$. The initial concentration (about 1 cm from the melt/solid interface) of vacancies and interstitials are calculated for two cases with different $G_0(r)$: (1) $G_0(r) = 2.65 + 5 \times 10^{-5} r^2$ (K/mm) and (2) $G_0(r) = 2.65 + 5 \times 10^{-5} r^2$ (K/mm). For each case the pull rate was adjusted such that the boundary between vacancy-rich silicon and interstitial-rich silicon is at a radius of 3 cm. The pull rate used for case 1 and 2 were 0.4 and 0.35 mm/min, respectively. From FIG. 11 it is clear that the initial concentration of interstitials in the interstitial-rich portion of the crystal is dramatically reduced as the radial variation in the initial axial temperature gradient is reduced. This leads to an improvement in the quality of the material since it becomes easier to avoid the formation of interstitial defect clusters due to supersaturation of interstitials.

Example 3

Increased Out-diffusion Time for Interstitials

FIGS. 12 and 13 illustrate the improvement in quality that can be achieved by increasing the time for out-diffusion of interstitials. The concentration of interstitials is calculated for two cases with differing axial temperature profiles in the crystal, dT/dz . The axial temperature gradient at the melt/solid interface is the same for both cases, so that the initial concentration (about 1 cm from the melt/solid interface) of interstitials is the same for both cases. In this example, the pull rate was adjusted such that the entire is crystal is

interstitial-rich. The pull rate was the same for both cases, 0.32 mm/min. The longer time for interstitial out-diffusion in case 2 results in an overall reduction of the interstitial concentration. This leads to an improvement in the quality of the material since it becomes easier to avoid the formation of interstitial defect clusters due to supersaturation of interstitials.

Example 4

A 700 mm long, 150 mm diameter crystal was grown with a varying pull rate. The pull rate varied nearly linearly from about 1.2 mm/min at the shoulder to about 0.4 mm/min at 430 mm from the shoulder, and then nearly linearly back to about 0.65 mm/min at 700 mm from the shoulder. Under these conditions in this particular crystal puller, the entire radius is grown under interstitial-rich conditions over the length of crystal ranging from about 320 mm to about 525 mm from the shoulder of the crystal. Referring to FIG. 14, at an axial position of about 525 mm and a pull rate of about 0.47 mm/min, the crystal is free of agglomerated intrinsic point defect clusters across the entire diameter. Stated another way, there is one small section of the crystal in which the width of the axially symmetric region, i.e., the region which is substantially free of agglomerated defects, is equal to the radius of the ingot.

Example 5

As described in Example 1, a series of single crystal silicon ingots was grown at varying pull rates and then analyzed to determine the axial position (and corresponding pull rate) at which agglomerated interstitial defects first appeared or disappeared. Interpolation between and extrapolation from these points, plotted on a graph of pull rate v , axial position, yielded a curve which represents, to a first approximation, the pull rate for a 200 mm crystal as a function of length in the crystal puller at which the axially symmetric region is at its maximum width. Additional crystals were then grown at other pull rates and further analysis of these crystals was used to refine this empirically determined optimum pull rate profile.

Using this data and following this optimum pull rate profile, a crystal of about 1000 mm in length and about 200 mm in diameter was grown. Slices of the grown crystal, obtained from various axial position, were then analyzed using oxygen precipitation methods standard in the art in order to (i) determine if agglomerated interstitial defects were formed, and (ii) determine, as a function of the radius of the slice, the position of the V/I boundary. In this way the presence of an axially symmetric region was determined, as well as the width of this region a function of crystal length or position.

The results obtained for axial positions ranging from about 200 mm to about 950 mm from the shoulder of the ingot are present in the graph of FIG. 15. These results show that a pull rate profile may be determined for the growth of a single crystal silicon ingot such that the constant diameter portion of the ingot may contain an axially symmetric region having a width, as measured from the circumferential edge radially toward the central axis of the ingot, which is at least about 40% the length of the radius of the constant diameter portion. In addition, these results show that this axially symmetric region may have a length, as measured along the central axis of the ingot, which is about 75% of the length of the constant diameter portion of the ingot.

Example 6

A single crystal silicon ingot having a length of about 1100 mm and a diameter of about 150 mm was grown with

a decreasing pull rate. The pull rate at the shoulder of the constant diameter portion of the ingot was about 1 mm/min. The pull rate decreased exponentially to about 0.4 mm/min., which corresponded to an axial position of about 200 mm from the shoulder. The pull rate then decreased linearly until a rate of about 0.3 mm/min. was reached near the end of the constant diameter portion of the ingot.

Under these process conditions in this particular hot zone configuration, the resulting ingot contains a region wherein the axially symmetric region has a width which about equal to the radius of the ingot. Referring now to FIGS. 16a and 16b, which are images produced by a scan of the minority carrier lifetime of an axial cut of a portion of the ingot following a series of oxygen precipitation heat treatments, consecutive segments of the ingot, ranging in axial position from about 100 mm to about 250 mm and about 250 mm to about 400 mm are present. It can be seen from these figures that a region exists within the ingot, ranging in axial position from about 170 mm to about 290 mm from the shoulder, which is free of agglomerated intrinsic point defects across the entire diameter. Stated another way, a region is present within the ingot wherein the width of the axially symmetric region, i.e., the region which is substantially free of agglomerated interstitial defects, is about equal to the radius of the ingot.

In addition, in a region ranging from an axial position from about 125 mm to about 170 mm and from about 290 mm to greater than 400 mm there are axially symmetric regions of interstitial dominated material free of agglomerated intrinsic point defects surrounding a generally cylindrical core of vacancy dominated material which is also free of agglomerated intrinsic point defects.

Finally, in a region ranging from an axial position from about 100 mm to about 125 mm there is an axially symmetric region of interstitial dominated material free of agglomerated defects surrounding a generally cylindrical core of vacancy dominated material. Within the vacancy dominated material, there is an axially symmetric region which is free of agglomerated defects surrounding a core containing agglomerated vacancy defects.

Example 7

Cooling Rate and Position of V/I Boundary

A series of single crystal silicon ingots (150 mm and 200 mm nominal diameters), were grown in accordance with the Czochralski method using different hot zone configurations, designed by means common in the art, which affected the residence time of the silicon at temperatures in excess of about 1050° C. The pull rate profile for each ingot was varied along the length of the ingot in an attempt to create a transition from a region of agglomerated vacancy point defects to a region of agglomerated interstitial point defects.

Once grown, the ingots were cut longitudinally along the central axis running parallel to the direction of growth, and then further divided into sections which were each about 2 mm in thickness. Using the copper decoration technique previously described, one set of such longitudinal sections was then heated and intentionally contaminated with copper, the heating conditions being appropriate for the dissolution of a high concentration of copper interstitials. Following this heat treatment, the samples were then rapidly cooled, during which time the copper impurities either outdiffused or precipitated at sites where oxide clusters or agglomerated interstitial defects were present. After a standard defect delineating etch, the samples were visually inspected for the

presence of precipitated impurities; those regions which were free of such precipitated impurities corresponded to regions which were free of agglomerated interstitial defects.

Another set of the longitudinal sections was subjected to a series of oxygen precipitation heat treatments in order to cause the nucleation and growth of new oxide clusters prior to carrier lifetime mapping. Contrast bands in lifetime mapping were utilized in order to determine and measure the shape of the instantaneous melt/solid interface at various axial positions in each ingot. Information on the shape of the melt/solid interface was then used, as discussed further below, to estimate the absolute value of, and the radial variation in, the average axial temperature gradient, G_0 . This information was also used, in conjunction with the pull rate, to estimate the radial variation in v/G_0 .

To more closely examine the effect growth conditions have on the resulting quality of a single crystal silicon ingot, several assumptions were made which, based on experimental evidence available to-date, are believed to be justified. First, in order to simplify the treatment of thermal history in terms of the time taken to cool to a temperature at which the agglomeration of interstitial defects occurs, it was assumed that about 1050° C. is a reasonable approximation for the temperature at which the agglomeration of silicon self-interstitials occurs. This temperature appears to coincide with changes in agglomerated interstitial defect density observed during experiments in which different cooling rates were employed. Although, as noted above, whether agglomeration occurs is also a factor of the concentration of interstitials, it is believed that agglomeration will not occur at temperatures above about 1050° C. because, given the range of interstitial concentrations typical for Czochralski-type growth processes, it is reasonable to assume that the system will not become critically supersaturated with interstitials above this temperature. Stated another way, for concentrations of interstitials which are typical for Czochralski-type growth processes, it is reasonable to assume that the system will not become critically supersaturated, and therefore an agglomeration event will not occur, above a temperature of about 1050° C.

The second assumption that was made to parameterize the effect of growth conditions on the quality of single crystal silicon is that the temperature dependence of silicon self-interstitial diffusivity is negligible. Stated another way, it is assumed that self-interstitials diffuse at the same rate at all temperatures between about 1400° C. and about 1050° C. Understanding that about 1050° C. is considered a reasonable approximation for the temperature of agglomeration, the essential point of this assumption is that the details of the cooling curve from the melting point does not matter. The diffusion distance depends only on the total time spent cooling from the melting point to about 1050° C.

Using the axial temperature profile data for each hot zone design and the actual pull rate profile for a particular ingot, the total cooling time from about 1400° C. to about 1050° C. may be calculated. It should be noted that the rate at which the temperature changes for each of the hot zones was reasonably uniform. This uniformity means that any error in the selection of a temperature of nucleation for agglomerated interstitial defects, i.e., about 1050° C., will arguably lead only to scaled errors in the calculated cooling time.

In order to determine the radial extent of the vacancy dominated region of the ingot ($R_{vacancy}$), or alternatively the width of the axially symmetric region, it was further assumed that the radius of the vacancy dominated core, as determined by the lifetime map, is equivalent to the point at

solidification where $v/G_0 = v/G_0$ critical. Stated another way, the width of the axially symmetric region was generally assumed to be based on the position of the V/I boundary after cooling to room temperature. This is pointed out because, as mentioned above, as the ingot cools recombination of vacancies and 10 silicon self-interstitials may occur. When recombination does occur, the actual position of the V/I boundary shifts inwardly toward the central axis of the ingot. It is this final position which is being referred to here.

To simplify the calculation of G_0 , the average axial temperature gradient in the crystal at the time of solidification, the melt/solid interface shape was assumed to be the melting point isotherm. The crystal surface temperatures were calculated using finite element modeling (FEA) techniques and the details of the hot zone design. The entire temperature field within the crystal, and therefore G_0 , was deduced by solving Laplace's equation with the proper boundary conditions, namely, the melting point along the melt/solid interface and the FEA results for the surface temperature along the axis of the crystal. The results obtained at various axial positions from one of the ingots prepared and evaluated are presented in FIG. 17.

To estimate the effect that radial variations in G_0 have on the initial interstitial concentration, a radial position R' , that is, a position halfway between the V/I boundary and the crystal surface, was assumed to be the furthest point a silicon self-interstitial can be from a sink in the ingot, whether that sink be in the vacancy dominated region or on the crystal surface. By using the growth rate and the G_0 data for the above ingot, the difference between the calculated v/G_0 at the position R' and v/G_0 at the V/I boundary (i.e., the critical v/G_0 value) provides an indication of the radial variation in the initial interstitial concentration, as well as the effect this has on the ability for excess interstitials to reach a sink on the crystal surface or in the vacancy dominated region.

For this particular data set, it appears there is no systematic dependence of the quality of the crystal on the radial variation in v/G_0 . As can be seen in FIG. 18, the axial dependence in the ingot is minimal in this sample. The growth conditions involved in this series of experiments represent a fairly narrow range in the radial variation of G_0 . As a result, this data set is too narrow to resolve a discernable dependence of the quality (i.e., the presence or absence of a band of agglomerated intrinsic point defects) on the radial variation of G_0 .

As noted, samples of each ingot prepared were evaluated at various axial positions for the present or absence of agglomerated interstitial defects. For each axial position examined, a correlation may be made between the quality of the sample and the width of the axially symmetric region. Referring now to FIG. 19, a graph may be prepared which compares the quality of the given sample to the time the sample, at that particular axial position, was allowed to cool from solidification to about 1050° C. As expected, this graph shows the width of the axially symmetric region (i.e., $R_{crystal} - R_{vacancy}$) has a strong dependence on the cooling history of the sample within this particular temperature range. In order of the width of the axially symmetric region to increase, the trend suggests that longer diffusion times, or slower cooling rates, are needed.

Based on the data present in this graph, a best fit line may be calculated which generally represents a transition in the quality of the silicon from "good" (i.e., defect-free) to "bad" (i.e., containing defects), as a function of the cooling time allowed for a given ingot diameter within this particular

temperature range. This general relationship between the width of the axially symmetric region and the cooling rate may be expressed in terms of the following equation:

$$(R_{crystal} - R_{transition})^2 = D_{eff} * t_{1050^\circ C.}$$

wherein

$R_{crystal}$ is the radius of the ingot,

$R_{transition}$ is the radius of the axially symmetric region at an axial position in the sample where a transition occurs in the interstitial dominated material from being defect-free to containing defects, or vice versa,

D_{eff} is a constant, about $9.3 * 10^{-4} \text{ cm}^2 \text{ sec}^{-1}$, which represents the average time and temperature of interstitial diffusivity, and

$t_{1050^\circ C.}$ is the time required for the given axial position of the sample to cool from solidification to about 1050° C.

Referring again to FIG. 19, it can be seen that, for a given ingot diameter, a cooling time may be estimated in order to obtain an axially symmetric region of a desired diameter. For example, for an ingot having a diameter of about 150 mm, an axially symmetric region having a width about equal to the radius of the ingot may be obtained if, between the temperature range of about 1410° C. and about 1050° C., this particular portion of the ingot is allowed to cool for about 10 to about 15 hours. Similarly, for an ingot having a diameter of about 200 mm, an axially symmetric region having a width about equal to the radius of the ingot may be obtained if between this temperature range this particular portion of the ingot is allowed to cool for about 25 to about 35 hours. If this line is further extrapolated, cooling times of about 65 to about 75 hours may be needed in order to obtain an axially symmetric region having a width about equal to the radius of an ingot having a diameter of about 300 mm. It is to be noted in this regard that, as the diameter of the ingot increases, additional cooling time is required due to the increase in distance that interstitials must diffuse in order to reach sinks at the ingot surface or the vacancy core.

Referring now to FIGS. 20, 21, 22 and 23, the effects of increased cooling time for various ingots may be observed. Each of these figures depicts a portion of an ingot having a nominal diameter of 200 mm, with the cooling time from the temperature of solidification to 1050° C. progressively increasing from FIG. 20 to FIG. 23.

Referring to FIG. 20, a portion of an ingot, ranging in axial position from about 235 mm to about 350 mm from the shoulder, is shown. At an axial position of about 255 mm, the width of the axially symmetric region free of agglomerated interstitial defects is at a maximum, which is about 45% of the radius of the ingot. Beyond this position, a transition occurs from a region which is free of such defects, to a region in which such defects are present.

Referring now to FIG. 21, a portion of an ingot, ranging in axial position from about 305 mm to about 460 mm from the shoulder, is shown. At an axial position of about 360 mm, the width of the axially symmetric region free of agglomerated interstitial defects is at a maximum, which is about 65% of the radius of the ingot. Beyond this position, defect formation begins.

Referring now to FIG. 22, a portion of an ingot, ranging in axial position from about 140 mm to about 275 mm from the shoulder, is shown. At an axial position of about 210 mm, the width of the axially symmetric region is about equal to the radius of the ingot; that is, a small portion of the ingot within this range is free of agglomerated intrinsic point defects.

Referring now to FIG. 23, a portion of an ingot, ranging in axial position from about 600 mm to about 730 mm from

the shoulder, is shown. Over an axial position ranging from about 640 mm to about 665 mm, the width of the axially symmetric region is about equal to the radius of the ingot. In addition, the length of the ingot segment in which the width of the axially symmetric region is about equal to the radius of the ingot is greater than what is observed in connection with the ingot of FIG. 22.

When viewed in combination, therefore, FIGS. 20, 21, 22, and 23 demonstrate the effect of cooling time to 1050° C. upon the width and the length of the defect-free, axially symmetric region. In general, the regions containing agglomerated interstitial defects were the result of a continued decrease of the crystal pull rate, leading to an initial interstitial concentration which was too large to be reduced given the cooling time of that portion of the crystal. A greater length of the axially symmetric region means a larger range of pull rates (i.e., initial interstitial concentrations) are available for the growth of such defect-free material. Increasing the cooling time allows for initially higher concentrations of interstitials, because sufficient time for radial diffusion may be achieved in order to suppress the concentration below the critical concentration required for agglomeration of interstitial defects. Stated in other words, for longer cooling times, somewhat lower pull rates (and, therefore, higher initial interstitial concentrations) will still lead to a maximum axially symmetric region 6. Therefore, longer cooling times lead to an increase in the allowable pull rate variation, relative to the conditions required in order to maximum the axially symmetric region diameter and ease the restrictions on process control. As a result, the process for an axially symmetric region over large lengths of the ingot becomes easier.

Referring again to FIG. 23, over an axial position ranging from about 665 mm to greater than 730 mm from the shoulder of crystal, a region of vacancy dominated material free of agglomerated defects is present in which the width of the region is equal to the radius of the ingot.

As can be seen from the above data, by means of controlling the cooling rate, the concentration of self-interstitials may be suppressed by allowing more time for interstitials to diffuse to regions where they may be annihilated. As a result, the formation of agglomerated interstitial defects is prevented within significant portions of the single crystal silicon ingot.

Epitaxial Wafers

Experiment 8

In accordance with the present process, two Czochralski p-type single crystal silicon ingots, about 200 mm in diameter (nominal), were grown. Ingot A was prepared in accordance with the process described above, in order to obtain a portion having an axially symmetric region of interstitial dominated material which is substantially free of agglomerated defects. In contrast, ingot B was prepared using process conditions common in the art. After growth was complete, each ingot was further processed to yield wafers by means common in the art, including slicing, lapping, etching, and polishing.

Such techniques are disclosed, for example, in F. Shimura, *Semiconductor Silicon Crystal Technology*, Academic Press, 1989, and *Silicon Chemical Etching*, (J. Grabmaier ed.) Springer-Verlag, New York, 1982 (incorporated herein by reference).

Twelve wafers obtained from ingot A and thirteen wafers obtained from ingot B were analyzed (Tencor laser scan) for the presence of agglomerated interstitial and vacancy defects. The results obtained for each wafer within a given

set were then "stacked mapped" with the results of the other wafers in the set, yielding the results shown in FIGS. 26 and 27 (for the wafers obtained from ingots A and B, respectively). Referring now to FIG. 26, results indicate that the wafers obtained from ingot A contain an axially symmetric region of interstitial type material which is substantially free of agglomerated interstitial defects, having a width which is equal to about 60% of the radius, as well as a central core of vacancy-type material having agglomerated vacancy defects. In contrast, as can be seen from FIG. 27, results indicate that the wafers obtained from ingot B contain agglomerated interstitial defects, the wafers having a band of such defects of a width which is about equal to the radius of the ingot, extending from near the edge of the ingot inward to about 80% of the radius.

After the initial Tencor analyses were complete, the wafers were subjected to an epitaxial deposition process, wherein an epitaxial layer about 4 microns thick was deposited. The resulting epitaxial wafers were then evaluated again by Tencor analysis and the results were stacked mapped. Referring now to FIGS. 28 and 29 (which represent the results for the wafers from ingot A and B, respectively), results of the analyses show that the epitaxial wafers obtained from ingot A (FIG. 28) are of superior quality as compared to those from ingot B (FIG. 29), in terms of grown-in defect concentration. Referring specifically to FIG. 29, it can be observed that the presence of agglomerated interstitial defects in the substrates resulted in formation of a band of grown-in defects in the epitaxial wafers. In contrast, referring to FIG. 28, the absence of such agglomerated defects resulted in the formation of epitaxial layers substantially free of grown-in defects. Furthermore, it may be observed from both FIGS. 28 and 29 that the presence of a central core of agglomerated vacancy defects is not narrowly critical to the quality of the resulting epitaxial layer. More specifically, the presence of agglomerated vacancy defects generally did not result in the formation of defects in the epitaxial layer.

It is to be noted that, with regard to the results shown in FIG. 28, other defects appear to be present on the surface of the epitaxial layers. Without being held to any particular theory, it is believed that these defects are not due to the agglomerated interstitial or vacancy defects present on the surfaces of the substrates. For example, in both FIGS. 28 and 29, a pattern of defects greater than 10 microns in size is present. It is generally believed that these defects were caused by something other than agglomerated interstitial defects because of the pattern observed and because wafers from ingot A were prepared to be substantially free of such agglomerated defects (based on growth conditions previously determined within the given crystal puller to yield such results). It is further believed that other defects detected by the Tencor analyses are due to such things as particulate or other organic contaminants on the substrate surface prior to epitaxial deposition, or simply dust particles or other particulate present on the surface of the epitaxial layer.

Grown-in defects in the epitaxial layer associated with the presence of agglomerated interstitial defects at the surface of the substrate may be distinguished from these other types of defects by different methods, including inspection of the epitaxial layer under a microscope. For example, it is generally believed that, if viewed under a microscope, such grown-in defects will have distinct crystallographic orientation; that is, hillocks or stacking faults typically form along the [110] crystallographic plane. For example, referring to FIG. 30, an optical microscopy image of a defect detected on the surface of an epitaxial wafer obtained from ingot B is

shown. It appears the defect, having a size of about 0.12 microns, is a very low height hillock, about 10 microns in length and about 2 to 3 microns in width. The defect has about a 450 orientation with a notch alignment at about 6 o'clock.

In contrast, defects resulting from the accumulation of deposited material at the site of particulate or other contaminants on the substrate surface are believed to have no crystallographic orientation. Such defects are sometimes referred to as large area defects, or LADs. Accordingly, it is to be noted that the present invention may be confirmed by initially analyzing the substrate to identify regions of agglomerated vacancy and interstitial defects, and then subsequently analyzing those same regions after epitaxial deposition to determine what types of defects, if any, are present on the surface of the epitaxial wafer.

As discussed above, agglomerated interstitial and vacancy defects may also be detected through decoration by chemical etching. In order to further confirm that the resulting region of grown-in defects of the epitaxial wafers from ingot B correspond to the region of agglomerated interstitial defects of the substrates, a quarter section of ingot B, sliced from an axial position proximate the section from which the wafers were taken, was subjected to a copper decoration process, as described in detail above. Referring now to FIG. 31, it can be observed that, after copper decoration, this quarter section contains distinct regions of material dominated by agglomerated vacancy defects (near the center of the wafer, denoted "Vacancy") and agglomerated interstitial defects (located radially outward of the vacancy region, denoted "I-defect"). Furthermore, it may be observed that the region of agglomerated interstitial defects begins about 30 mm from the central axis and ends about 90 mm from the central axis. Referring again to FIG. 29, it can be observed that the concentrated band of grown-in defects in the epitaxial layer begins about 30 mm from the central axis and ends about 90 mm from the central axis.

In view of the above, it will be seen that the several objects of the invention are achieved.

As various changes could be made in the above compositions and processes without departing from the scope of the invention, it is intended that all matter contained in the above description be interpreted as illustrative and not in a limiting sense.

What is claimed is:

1. A set of epitaxial silicon wafers assembled in a wafer cassette, boat or other wafer carrier, each of said wafers comprising:

a single crystal silicon substrate having a central axis, a front surface and a back surface which are generally perpendicular to the central axis, a circumferential edge, and a radius extending from the central axis to the circumferential edge, the substrate comprising a first axially symmetric region in which silicon self-interstitials are the predominant intrinsic point defect and which is substantially free of agglomerated interstitial defects, the axially symmetric region extending radially inwardly from the circumferential edge of the substrate; and,

an epitaxial layer deposited upon a surface of the substrate, the epitaxial layer being substantially free of grown-in defects.

2. The set of epitaxial wafers as set forth in claim 1 wherein the first axially symmetric region of each substrate has a width, as measured from the circumferential edge radially toward the center axis, which is about 10 percent of the length of the radius of the substrate.

3. The set of epitaxial wafers as set forth in claim 1 wherein the first axially symmetric region of each substrate has a width, as measured from the circumferential edge radially toward the center axis, which is about 20 percent of the length of the radius of the substrate.

4. The set of epitaxial wafers as set forth in claim 1 wherein the first axially symmetric region of each substrate has a width, as measured from the circumferential edge radially toward the center axis, which is about 40 percent of the length of the radius of the substrate.

5. The set of epitaxial wafers as set forth in claim 1 wherein the first axially symmetric region of each substrate has a width, as measured from the circumferential edge radially toward the center axis, which is about 80 percent of the length of the radius of the substrate.

6. The set of epitaxial wafers as set forth in claim 1 wherein the first axially symmetric region of each substrate has a width, as measured from the circumferential edge radially toward the center axis, which is about equal to the length of the radius of the substrate.

7. The set of epitaxial wafers as set forth in claim 1 wherein the set comprises at least about 5 wafers.

8. The set of epitaxial wafers as set forth in claim 1 wherein the set comprises at least about 10 wafers.

9. The set of epitaxial wafers as set forth in claim 1 wherein the set comprises at least about 25 wafers.

10. The set of epitaxial wafers as set forth in claim 1 wherein the epitaxial layer of each wafer has a thickness of about 1 to about 15 microns.

11. The set of epitaxial wafers as set forth in claim 1 wherein the epitaxial layer of each wafer has a thickness of about 1 to about 10 microns.

12. The set of epitaxial wafers as set forth in claim 1 wherein the epitaxial layer of each wafer has a thickness of about 1 to about 5 microns.

13. The set of epitaxial wafers as set forth in claim 1 wherein each substrate additionally comprises a second axially symmetric region in which vacancies are the predominant intrinsic point defect and which is substantially free of agglomerated vacancy defects, wherein the second axially symmetric region comprises the central axis or has a width of at least about 15 mm.

14. The set of epitaxial wafers as set forth in claim 13 wherein the second axially symmetric region of the substrate has a width of at least about 15% of the radius.

15. The set of epitaxial wafers as set forth in claim 13 wherein the second axially symmetric region of the substrate has a width of at least about 25% of the radius.

16. The set of epitaxial wafers as set forth in claim 13 wherein the second axially symmetric region of the substrate has a width of at least about 50% of the radius.

17. The set of epitaxial wafers as set forth in claim 13 wherein the second axially symmetric region of the substrate comprises the central axis.

18. The set of epitaxial wafers as set forth in claim 13 wherein the second axially symmetric region of the substrate has a width of at least about 15 mm.

19. The set of epitaxial wafers as set forth in claim 1 wherein each of the wafers in the set have an oxygen content which is less than about 12 PPMA.

20. The set of epitaxial wafers as set forth in claim 1 wherein each of the wafers in the set have an oxygen content which is less than about 10 PPMA.

21. The set of epitaxial wafers as set forth in claim 1 wherein each of the wafers has a nominal diameter of about 150 mm.

22. The set of epitaxial wafers as set forth in claim 1 wherein each of the wafers has a nominal diameter of about 200 mm.

27

23. The set of epitaxial wafers as set forth in claim 1 wherein each of the wafers has a nominal diameter of greater than about 200 mm.

24. A set of epitaxial silicon wafers assembled in a wafer cassette, boat or other wafer carrier, each of said wafers comprising:

a single crystal silicon substrate wafer obtained from a single crystal silicon ingot prepared in accordance with the Czochralski method and having a nominal diameter of at least about 150 mm, the substrate having a central axis, a front surface and a back surface which are generally perpendicular to the central axis, a circumferential edge, and a radius extending from the central axis to the circumferential edge, the substrate being characterized in that it has a first axially symmetric region in which silicon self-interstitials are the predominant in trinsic point defect and which is substantially free of agglomerated interstitial defects, the axially symmetric region extending radially inwardly from the circumferential edge of the substrate; and,

an epitaxial layer deposited upon a surface of the substrate, the epitaxial layer being substantially free of grown-in defects caused by agglomerated interstitial defects present at the substrate surface upon which the epitaxial layer is deposited.

25. The set of epitaxial wafers as set forth in claim 24 wherein the first axially symmetric region of each substrate has a width, as measured from the circumferential edge radially toward the center axis, which is about 40 percent of the length of the radius of the substrate.

26. The set of epitaxial wafers as set forth in claim 24 wherein the first axially symmetric region of each substrate has a width, as measured from the circumferential edge radially toward the center axis, which is about 80 percent of the length of the radius of the substrate.

28

27. The set of epitaxial wafers as set forth in claim 24 wherein the first axially symmetric region of each substrate has a width, as measured from the circumferential edge radially toward the center axis, which is about equal to the length of the radius of the substrate.

28. The set of epitaxial wafers as set forth in claim 24 wherein each of the wafers has a nominal diameter of about 200 mm.

29. The set of epitaxial wafers as set forth in claim 28 wherein the set comprises about 25 wafers.

30. The set of epitaxial wafers as set forth in claim 24 wherein each of the wafers has a nominal diameter of about 300 mm.

31. The set of epitaxial wafers as set forth in claim 30 wherein the set comprises about 13 wafers.

32. The set of epitaxial wafers as set forth in claim 24 wherein the epitaxial layer of each wafer has a thickness of about 1 to about 10 microns.

33. The set of epitaxial wafers as set forth in claim 24 wherein each substrate additionally comprises a second axially symmetric region in which vacancies are the predominant intrinsic point defect and which is substantially free of agglomerated vacancy defects, wherein the second axially symmetric region comprises the central axis or has a width of at least about 15 mm.

34. The set of epitaxial wafers as set forth in claim 33 wherein the second axially symmetric region of the substrate has a width of at least about 25% of the radius.

35. The set of epitaxial wafers as set forth in claim 24 wherein each of the wafers in the set have an oxygen content which is less than about 12 PPMA.

* * * * *

UNITED STATES PATENT AND TRADEMARK OFFICE
CERTIFICATE OF CORRECTION

PATENT NO. : 6,284,039 B1
DATED : September 4, 2001
INVENTOR(S) : Luciano Mule'Stagno et al.

Page 1 of 1

It is certified that error appears in the above-identified patent and that said Letters Patent is hereby corrected as shown below:

Title page.

Item [56], **References Cited**, "5,264,186" should show -- 5,264,189 --.

Column 27.

Line 17, "in trinsic" should read -- intrinsic --.

Signed and Sealed this

Eighth Day of October, 2002

Attest:

A handwritten signature in black ink, appearing to read "James E. Rogan", written over a horizontal line.

Attesting Officer

JAMES E. ROGAN
Director of the United States Patent and Trademark Office