

NOTES
ON
MALTA



BY
COL. M. H. EGAN

1922



Price One Shilling.

PRINTED BY

CHRÉTIEN & Co.

VALLETTA-MALTA

DG
989.4
.E33

50/

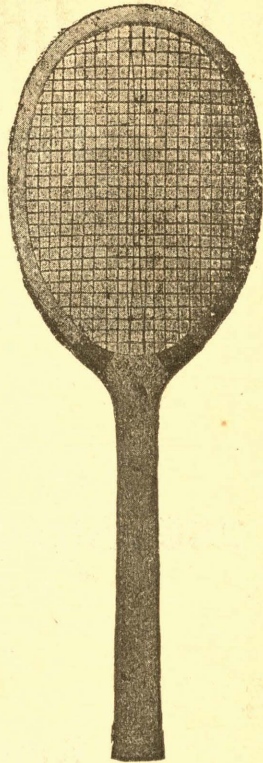
I

MUSCAT,

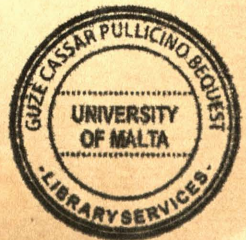
The Expert Sports Outfitter
With 120 years' Reputation.

Tennis Rackets and
Tennis Balls, Golf Clubs
and Golf Balls, Hockey
Sticks and Hockey Balls,
Footballs, Football Boots,
Football Jerseys and
Knickers, and EVERY
ARTICLE CONNECT-
ED WITH BRITISH
SPORTS AND GAMES.

SOLE AGENT for the
leading manufacturers.



MUSCAT,
THE HOUSE OF PROGRESS.



II

Telegraphic Address:- LUX=MALTA.

Telephone No. 91 Civil Exchange.

THE GRAND STUDIO


Photographers

&

Photo Goods Dealers.

268, Strada Reale, Valletta.

Amateur's Films
developed and Printed.



PAOLO CAMILLERI
A LA VILLE DE LYON

(Near St. John's Church)

MILITARY CONTRACTOR

AN UP-TO-DATE GENERAL DRAPERY.

Comprising always the Latest Novelties in Dress Materials for Ladies in Silks, Velvets, Voiles, Serges, Crepe de Chines, Silk for Faldettas, etc. From the Leading Houses in England and other Countries.

The Varied continual changing Stocks, includes STOCKINGS, UNDERWEAR, CORSETS, KNITTED JERSEYS, CARPETS, CURTAINS, etc.

Also Irish Linen, Calicoes, Nainsooks, Shirtings etc. and all the Necessities for Household use.

Gentlemen's Tweeds and Diagonals at very low prices.

PRICES VERY ECONOMICAL.



A B E L A

LATE CATERER FOR OFFICERS.

King's Own Malta Regiment

Over 25 Years experience as Caterer and Head waiter undertakes:— DINNERS, LUNCHEONS and TEA PARTIES, WEDDINGS, DANCES, PICNICS, etc., etc.

Best Cuisine, Refreshments and Wines are always supplied. Satisfaction guaranteed.

TERMS MODERATE.

REFERENCES SHOWN ON APPLICATION AT

No. 20, Strada Cristoforo, Valletta.

James Lyle Whisky Kept in stock.

GIEVES LTD.



By Special Appointment



By Special Appointment

Of Old Bond Street.

(Established 1785)

12, Strada Mezzodi, Valletta.

NAVAL, MILITARY

R.A.F. & CIVIL OUTFITTERS.

The one House in Malta Supplying Exclusively Complete Equipment for a Man.

ESTABLISHED SINCE 1860

First Class Diploma
for Lace
First Australian
Exhibition 1907
Patroness
H.M. The Queen.



Grand Prix.
Imperial International
Exhibition.
The Great White City,
Shepherd's Bush,
London, 1909.

AMABILE MIFSUD
MALTESE LACE MANUFACTURER & JEWELLER
WHOLESALE & RETAIL

140, STRADA SANTA LUCIA, VALLETTA - MALTA.

Orders to Customers' own Designs promptly executed.

Exports to all Parts of the world.

No connection with any other Firm of the same name.

ONLY ENTRANCE: 140, Strada Sta Lucia.



Telegram: OSBORNE, MALTA.

Telephone: CIVIL EXCHANGE.

OSBORNE HOTEL

50, STRADA MEZZODI,
VALLETTA-MALTA.

Patronized by

H.S.H. Prince Louis of Battenberg, and the Duke of Bronte.

A Most Comfortable Family Hotel.

Every Modern Improvement.

Electric Light Throughout.

Hot and Cold Baths.

Perfect Sanitary Arrangements.

L. SCHEMBRI & Co. Proprietors.

MOTOR GARRAGE.

**MOTOR CARS
FOR HIRE.**

THE

Anglo Egyptian Bank Ltd.

Head Office,
27, Clement's Lane, Lombard Street, London, E.C.

CAPITAL SUBSCRIBED	£ 1,800,000
„ PAID UP	600,000
RESERVE FUND	720,000

Head Office: LONDON.

EGYPT:—Alexandria, Cairo, Port-Said, Suez, Tantah,
Zagazig, Mansourah, Assiut, Beni-Suef.

SUDAN:—Omdurman, Khartoum, Port Sudan.

PALESTINE:—Haifa, Jaffa, Jerusalem, Ramallah,
Nazareth.

MEDITERRANEAN.—Malta, Gibraltar.

Malta Branch

232, Strada Reale, Valletta.

The Bank transacts every description of Banking business, grants letters of credit and affords facilities to travellers.

Current accounts kept in conformity with the practice of London Bankers.

Deposits received for periods of one year and upwards at 3 per cent per annum.

Bonds and securities for safe custody.

H. L. W. HARE,—*Manager.*

By Royal Appointment to H.R.H The PRINCE OF WALES.
Patronized by H.R.H. The DUKE OF CONNAUGHT.
Patronized by H.R.H. PRINCE ARTHUR OF CONNAUGHT.

S. ZARB & Co.

ARMY & NAVY TAILORS

50-51 STRADA REALE

VALLETTA, MALTA.

ESTABLISHED 1840.

.....
Wm. Younger & Co. Ltd.

BREWERS - EDINBURGH

ALES & STOUT.

OFFICE:~ 14 Piazza Brittanica,

FLORIANA.

THE EMPIRE STUDIO
CHRÉTIEN & Co.
Photographers

AND

Photo Goods Dealers.

291, STRADA REALE, VALLETTA.

Telephone No. 7.



DRYCO

DRYCO is used whenever liquid milk is indicated and is an easily digested, nutritious food, small in bulk and containing all the necessary elements of a balanced ration.

Dryco is the answer to the question of baby feeding.

Agents: John Chretien & Co.

291, STRADA REALE, VALLETTA.

ASCOT HOUSE

TAILORING & OUTFITTING

243 Strada Reale & 44^A Strada Teatro
(Palace Square)

VALLETTA, MALTA.

Telephone "ASCOT HOUSE" MALTA.

.....

Have You Tried

ZAHRA'S?

ZAHRA is the only House that can supply you with
a reliable watch at a reasonable cost.

ZAHRA FOR WATCHES
FOR JEWELLERY
FOR REPAIRS
's only address

78, Strada Mezzodi, Valletta - Malta.

.....

JOHN SAMUELE

General Manufacturer, Agent,
Import and Export Merchant
Supplier to Messes, Canteens, etc.

85 & 86, Scesa Marina, Valletta - Malta.

Telephone "JOHN SAMUELE", MARINA.



C. BONELLO'S PREMISES.

TAILORING ESTABLISHMENT SLIEMA

(OPPOSITE THE LANDING PLACE)

Orders promptly executed. When urgent delivered
within 24 hours.

TELEGRAPHIC "CUTTER" MALTA.

TEL. No. 404

BRITISH STORES INC.

NAVAL & MILITARY CONTRACTORS

Steamship Agent, Shipchandlers & General Merchants.

44 Sda. It-torri & 1 Sda. Tigné, Sliema - Malta.

British Motor Coy.

SLEIMA.

5 Seater, 7 Seater, 18 & 24 Seater, Char-A-BANCS
can be had at moment's notice.

TELEPHONE NO. 471.

.....

Banco di Roma.

Paid up Capital Lit. 150,000,000.

Reserve Fund „ 20,166,861,88.

Head Office—ROME,

BRANCHES in every Town of the Kingdom of Italy and colonies.

BRANCHES in France, Spain, Switzerland, Turkey, Asia Minor and Egypt.

Transactions by the Malta Office,

111, Str. Vescovo, Valletta.

Current Accounts opened at 2½ p. cent interest p.a.—
Savings Accounts at 3 p. cent interest p.a.—Fixed Deposits for 12 months at 4 p. cent interest p.a.—Drafts at the best rate of exchange, and letters of credit issued on the principal cities of the world.—Telegraphic transfers.—Purchase and sale of all foreign Bonds and securities, collection and cashing of dividends, coupons and drawn bonds—Foreign values exchanged.—Bills negotiated or forwarded for collection.—And, in general every description of banking business,

WOODHOUSE & Co's.

Marsala Wine

No purer or more Wholesome Wine is shipped than **MARSALA**, and from the peculiar properties this Wine derives from the volcanic soil of Sicily, it is highly recommended by medical men, and we guarantee it to be the pure juice of the grape.

Henry Twelves,

AGENT

also Sole Agent for

John Walker & Sons' Ltd. Whisky.

The Moorland Whisky.

J. Prunier & Cos' Brandy.

Heidsieck's "Dry Monopole" Champagne.

Ferreira's Port Wine.

Sandeman's Port & Sherries.

Duminy & Cie. Champagne.

Louis Eschenauer, Clarets, Graves.

And hold stocks of

Bass' Pale Ale.

Lager Beer.

Cider, &c. &c.

TELEPHONE No. 163.

THE CENTRAL LIBRARY

*Newsagency Stationery
Printing and Book - Binding
Artists Materials and Water Colour Paintings*
by the Russian Artist N. KRASNOFF
&

The Maltese Artist D'ESPOSITO.
65, Strada San Marco
VALLETTA - MALTA.

.....

V. FALZON

L A T E

J. BUCKLER & Co.
NAVAL & MILITARY TAILOR HABIT MAKER &c.
No. 19, Strada Reale,
VALLETTA - MALTA.

Bills Cashed. ½

.....

BY ROYAL WARRANT OF APPOINTMENT
TO H. M. QUEEN ALEXANDRA

FRANCIS MELI

VALLETTA - MALTA.

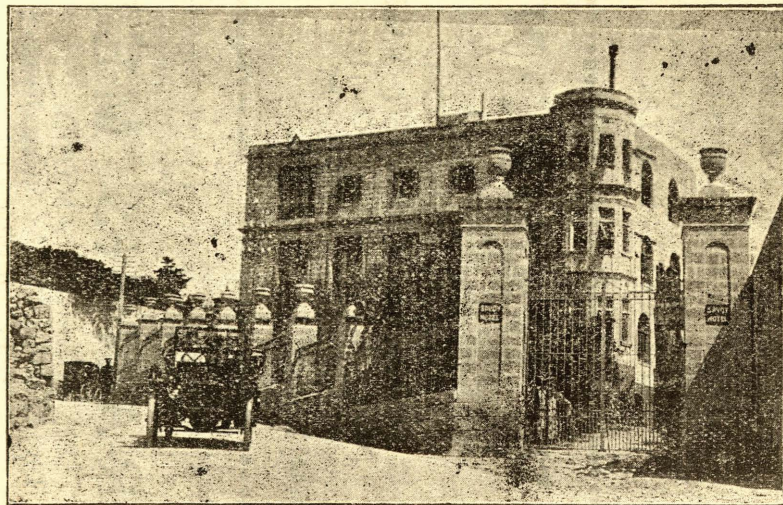
The Leading Manufacturing Jeweller,
Gold and Silversmith.
The place for getting Genuine Goods
At very moderate prices.
A very large assortment to select from,
including electro-plated Goods,
Orders and repairs executed on the Premises.

HOTEL SAVOY

No. 6, STRADA IMRABAT, SLIEMA - MALTA.

XIV

Home Comfort



High Class Hotel

TENNIS COURT.

MOTOR CARS ON HIRE.

THE MALTA WINE & SPIRIT COMPANY

Purveyors to His Majesty's Forces

Clubs & Messes supplied in any part of the world.

Cellars laid down.

PRIVATE HOUSES CATERED FOR

IMMEDIATE DELIVERIES.

Samples & Price Lists on application.

All well know brands of
Wines & Spirits Stocked.

OFFICES:—

89, Sda. San Giovanni, Valletta-Malta.

PHONE :- 224 Central

Telegrams :- MALTAWINE-MALTA.

CODES :- A.B.C. latest editions.

GREAT BRITAIN HOTEL,

67 Strada Mezzodi, Valletta. (Adjacent to
Opera House)

The Leading Hotel in Malta. The only First-class Residential Hotel in Malta under

EXPERIENCED ENGLISH MANAGEMENT

Large, Airy and well furnished BEDROOMS or APARTMENTS EN SUITE. Bath Rooms (hot or cold) on each floor.

Spacious PUBLIC DRAWING ROOM.

PUBLIC DINING ROOM and LOUNGE on Ground Floor.

Electric Light throughout. Terms Moderate. Special Inclusive Terms for Residential Officers and their families.

Wedding Receptions catered for at shortest notice.

EXCELLENT CUISINE.

SEPARATE TABLES.

Orchestra plays Nightly during Dinner from 8 p.m.

A limited number of Tables
are reserved for Non-Residents.

MOTOR GARAGE.

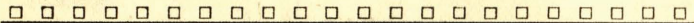
First Class Cars for HIRE.

NOTES
ON
M A L T A

MAGNÆ ET INVICTÆ BRITANNIÆ
MELITENSIIUM AMOR ET EUROPÆ VOX
HAS INSULAS CONFIRMAT A.D. 1814

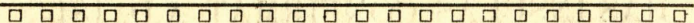
M. H. E.

1922



(Copyright)

Printed by CHRETIEN & Co. 205 Strada Forni
VALLETTA-MALTA



M. H. E.

1888



Malta & its Dependencies.

The Malta Islands, viz. MALTA, GOZO, COMINO, COMINOTTO, FILFOLA (Two last uninhabited) form a group in the central Mediterranean 58 miles South of Sicily and 180 miles from North African Coast. They cover an area of 117 sq. miles. Total Population (Maltese) (1921) 212,000. For purpose of comparison, the Isle of Wight has an area of about 147 sq. miles, population (1911) 88,000, and the United Kingdom has about 375 persons to sq. mile. Malta itself (ancient Melita) has an area of 95 sq. miles being roughly 17 miles long by 8 miles broad, and a population (1921) Maltese 189,700 i.e. some 2,070 persons to the sq. mile. Malta is 2,290 miles from London by sea, Gibraltar being about 1,054 miles from London. The N.E. coast is deeply indented and does not rise much above the sea, all high ground being on southern and western sides where greatest height is 827 feet above sea level. The soil is thin, but very fertile under the patient skilled hands of the country folk. A story commonly told of the importation of all soil in the Island from outside is purely fictitious. Most of the land under

cultivation has been made by excavating the many deep pockets of rich earth that exist in the rocky expanses, levelling down the rock 18" or so and at times trenching the same, and spreading the earth and powdered rock for the top layer after filling the deeper crevasses with the larger rubbish. This work is now being recommenced on a larger scale, the rock being attacked with simple drills and explosives. Cereals, Potatoes, Vegetables of all kinds, Oranges and Figs are produced for export (the Oranges and Potatoes are well known in England). Quite good local Wine is made from the Grape crops. Peaches, Apricots, Loquats, Strawberries large and small, Apples, Pears, Melons, Plums, Sweet Grapes are grown. Malta Honey, Silver Filigree and Lace are of course famous. Cotton is also grown and woven into a good local nankeen cloth. There are not many trees in the Island, but this is now being remedied by the Board of Agriculture which plants some 1,000 annually, which will in time remove much of the bareness of the landscape. Good building stone is largely quarried, a soft limestone, hardening somewhat soon after exposure. The very skilful local masons work this when fresh very much like wood, and use very similar tools, stone is cheaper than wood, thus even such buildings as fowl houses are of blocks of quarried stone.

Malta is a British Crown Colony and a Fortress. Has recently been granted Self Government only subject to non-interference with Imperial policy and interest. It is one of the most important ports of call in the world, and is the Naval Base for the Mediterranean Fleet, possessing consequently a good Dockyard with adequate dry dock accomodation. The Maltese language is quite possibly a branch from the ancient Phoenician,

another branch being Arabic, which it resembles. There is a University. National Religion Roman Catholic. Valletta, facing out to sea N. E., is the Capital, and is connected with the ancient capital Città Vecchia 6 Miles to the West (also called Notabile or Mdina) by a small railway.

Research points to Malta being colonised by the Libyans at the beginning of the Metallic Age. There are of course definite and substantial traces of infinitely earlier inhabitants, but their actual race is somewhat indefinite. The Phoenicians came into possession about 1500 B. C. Then came the Greeks 700 B. C., followed by the Carthaginians 480 B. C. and then the Romans 216 B. C. St. Paul's Bay on N. E. coast was the scene of St. Paul's Shipwreck 62 A. D. Subsequently the Island was occupied by Vandals, Arabs 870 A. D., Normans from Sicily 1090. After the capture of Rhodes by Solyman 1522, Malta was granted in 1530 to the dispossessed and wandering Knights of St. John of Jerusalem by Charles V. The world renowned defeat of Turks in the Great Siege took place 1565. It was taken by, or more strictly speaking weakly handed over to, the French in 1798 after a *two days* siege of Valletta. After a *two years* siege, Valletta was retaken from them by combined British & Maltese in 1800. Possession finally confirmed to Great Britain at the wish of the Maltese Nation by Treaty of Paris 1814.

Climate. Very pleasant Winter, Spring and early Summer and also in Autumn (when the damp Scirocco wind is *not* blowing and making August, September and October trying and enervating). Evenings are always cool. It can certainly be classed as healthy.

Rain falls chiefly in the Winter. Storms arise and dissipate very quickly. N. E. wind is the most bracing, southerly winds more or less damp.

Prevailing winds northerly, N. N. W. predominating. July is hottest month, its mean Temperature 76.8F, Mean Max. 92.8F, Mean Min. 67.1F., February is coldest, its Mean Temp. 52.9F. Mean Max. 65.3F, Mean Min. 42.6F. Highest Temperature shade recorded 104.8F (1896) lowest 34.2F (1895) Highest ever recorded in Sun 162.9F (1901) lowest on ground 31.7F (1895). Average rainfall 21.54 inches. The air is beautifully clear. Sicily is often visible and even at times the snows of Etna especially in the setting sun.

Water. Contrary to what one would expect is plentiful. The rock is very porous and will absorb large quantities of moisture, which exudes into miles of subterranean galleries from which the supply is pumped. This property of absorption also accounts for the numerous wells in all the fields. Hardness Total—20 parts, permanent 8 parts per 100,000.

Duties Taxes etc. Customs are leviable, amongst many other articles, on Horses £1 each, other animals 5% value. Spirits 15/- gal., Wine Sparkling per dozen Magnums 30/- Quarts 15/- Pints 7/6 Still, 1/- a Gal., Cigars 5/- lb., Cigarettes 4/- lb., Tobacco 2/4 lb. Arms and Ammunition 20%, Motors, Cycles and Parts 15%, Clocks etc. 15%, Glass 10%, Furniture 20%, Gold, Silver and plated goods 20%, Pianos 15%.

Passengers baggage containing personal effects Uniforms and their appurtenances for personal use, furniture in course of removal, Books, Scientific In-

struments are free. All parcels and every bulky letter packet has to be opened at Post Office so that custom dues may be assessed.

There are also stamp duties on various things, the stamp being most popular (with the authorities) e. g. All public notice bills, which run from $\frac{1}{4}$ d. to 1d. stamp or more according to size of the sheet, this includes public notices exhibited in Clubs and Messes, and possibly extends even to a "Wet Paint" notice. A 1d. Stamp on every cheque drawn on bank i. e. every English cheque costs 3d, a penny stamp on every "paying in" slip in local Bank. a 1/- stamp on Insurance policies or copy thereof with extra duties for various natures e.g. life insurances which totals up to finally 10/- extra per £ 1,000. Receipts pay -/1d. per £ 50—All applications for licences cost -/3d.

There is also a very far reaching Entertainment Tax on *all* payments for admission to any Entertainment ranging from -/ $\frac{1}{2}$ d. for a -/2d. admission up to 1/- for 10/-, 1/- for next 10/- and -/6d. every 5/- over that.

Clocks. The system of striking being different to English system, an explanation may be useful.

QUARTERS. One stroke for first, two for second and so on, on higher toned bell.

HOURS. Commencing midnight strike one to six, then recommence, e. g., 7. 0 a. or p. m. is one, 8. 0 a. or p. m. two and so on, on lower toned bell.

Thus 5. 30 a. or p. m. is two and five, 10. 45 a. or p. m. three and four, 11.00 a. or p. m. four and five, midday or midnight four and six. Thus the exact time is always clear. Mid-European time is used,

Lighting, etc. GAS is mainly used for cooking, it is expensive, at present 9/- per 1,000 c. f. The Maltese servants also use small charcoal stoves of a special pattern called chatties the charcoal is about 8lbs for -/10d. Electricity, with which many houses are lit, is 1/1d. per unit (pre war -/7d.) and Paraffin 1/6d. per Gall. Very few houses have kitchener stoves. Coal at £ 3. 5. 0 a ton.

Head-Quarter Offices & Depots. Army Head-Quarters is at Auberge de Castille, Valletta, where the Head Quarters Staff mainly have their Offices.

Naval Head-Quarters are at Admiralty House Sda. Mezzodi and at Auberge de Castille, Valletta,

Air Force Head-Quarters at Sda. Scozzese, Valletta.

Holidays. In the Services New Years Day, Ascension Day, St. Peter & St. Paul (29th June), Assumption (15th August) take the place of Bank Holidays. Good Friday and following day, The Sovereigns Birthday and Christmas Day are kept as usual. There are in addition innumerable Festas either fairly general or else confined to the Town or Village of which the Saint is Patron. These are frequently well worth a visit to see decorations and processions and fire works at night. The National Holiday commemorating the raising of the Great Siege is 8th September.

Residential Quarters. A Street is "Strada" a Road "Via", a Square "Piazza", a Cul de sac "Vicolo." The chief Quarters in which British live are West End of Valletta, South West portion of Floriana, also at Sliema, especially the coast front and St. Julians.

Valletta. Is central, convenient for Palace, Opera, Theatre, Main Hotels and all gaieties, functions etc., and contains all the chief stores, shops, etc. It is situated on a long spit of land that lies between the two Harbours (Grand and Marsamuscetto) with St. Elmo at its point, the back bone of the ridge being Strada Reale the main Street some 170 feet above the Harbours, with a secondary main street parallel to it to S. E., Strada Mercanti. All streets are at right angles to each other with distinctive names that continue throughout their length. The ground falls sharply away from Reale and Mercanti to the Harbours, the chief street residential district is Strada Mezzodì, where most of the Flats are situated, it is sometimes called the Park Lane of Malta.

Floriana. Is situated outside Valletta fortifications the other side of the glacis, which provides a good open space with gardens, palms, promenades, etc., it is slightly lower than Valletta. Reported to be hotter than Valletta in summer. Flats not so good or nearly so numerous as in Valletta.

Sliema. Over the Marsamuscetto Harbour, more desirable than the above two (with possibly some exceptions) in the summer, especially when there are children, but much more subject to sand flies and mosquitoes, particularly the former. Most of it lies 20 feet above sea level, but there is also higher ground at the back away from the sea with many houses. A main road, on which are most of the residences occupied by officers, winds along the sea front with

promenade on to St. Julians. Is isolated from most society functions which are practically all in Valletta, entailing crossing of Harbour or, in bad weather, driving four miles round. Many houses have small gardens.

St. Julians. Further out and still more isolated, otherwise same remarks apply as to Sliema.

Houses etc. Flats are chiefly in Valletta but there are a few in Floriana and Sliema. Houses chiefly in Sliema and St. Julians. Prices in order run Valletta highest next Floriana and then Sliema with St. Julians lowest, but to the two latter must be added transport costs to the former. Rents are paid in advance as a rule.

Tenants carry out all internal repairs except fair wear and tear or if out of tenants control, landlords look after drains, sinks, cisterns and exterior repairs. Rents Valletta and Floriana Houses £ 8 to £ 14 a month, Flats £ 45 to £ 80 per annum both plus about three quarters more if furnished. Sliema Houses £ 3 to £ 6 month or, smaller suitable for Warrant Officers and Non-Commissioned Officers £ 16 to £ 20 per annum or furnished £ 50, St. Julians rather lower than Sliema. Latterly unfurnished houses have been difficult to obtain as landlords prefer to let furnished.

Furniture second hand is now fairly expensive but nothing like Home rates, it is usually sold on leaving for little less than original price at the numerous sales always being held.

Hotels. There are numerous Hotels some of them a mere accumulation of houses and few originally built for the purpose. The best are quite comfortable, prices

run from 8/- to 12/- per day all included, and sometimes consist of a suite of Bedroom, Sitting Room and Bathroom, etc. Food at two or three quite above average. About four are over at Sliema, the remainder in Valletta.

Coinage, Weights, etc. British, except that there is in existence, though now rarely met with, a small bronze coin called a grain, equivalent to $\frac{1}{12}$ of a penny. Foreign bronze coins are not accepted. English cheques once taken everywhere, are, since the war, more cautiously accepted. British Weights and Measures, but some also use Maltese. One chiefly meets with the Rotolo 28 ozs. and Maltese Pound or Half Rotolo 14 ozs., some Drapers sell by the metre.

Postal Arrangements. A vexed question. Pre War mails were daily, via Sicily, taking four days to England. Up to 1920 at very irregular intervals, there were once or twice two or even three week breaks. Sent by any ship available, and taking any time from 6 to 10 and sometimes 17 days. At present 3 mails a week but there is *talk* of further improvement and attempts are being made to get a contract. Parcel Mails are infrequent and go by long sea 10 - 12 days. Letters Internal 1d. open $\frac{1}{2}$ d. invitation cards, circulars $\frac{1}{4}$ d, British Empire 2d. oz., 1d. oz. after, or opened or Post Card 1d. Continent 3d. oz., $1\frac{1}{2}$ d. after. Newspapers 2 oz. British Empire and Continent 1d. Internal $\frac{1}{4}$ d. Registration 3d. Money Orders as at Home except that very few denominations are stocked thus costing double or even treble poundage for some odd sums. Parcel Post United Kingdom 3 lbs. $\frac{1}{6}$ up to 7 lbs. $\frac{2}{8}$, up to 11 lbs. $\frac{3}{9}$. Cables (Tax of 3d.) by Eastern Telegraph Company Office Sda. Mezzodì. Per word to Great

Britain 4d, France 3½d, Gibraltar 3½d, Sicily 2d, Alexandria 5d, Parcels and Registered letters arriving have to be called for, a notice being sent through Post.

Travelling. Somewhat chaotic and expensive. The following lines call in at times, but frequently, refuse to take anyone for Malta, on account of being able to fill up with through passages.

Peninsular and Oriental S. S. Coy. P. and O. House 14 Cockspur Street, S.W. 1. Sail from London weekly, rarely calling homewards, transit 8 days £33 first Class, £20 second, Children above 12 full rate, above 3 half, under 3 quarter. Baggage free first 336 lbs. second 168, Children over 3 and under 12 half amounts. Extra Baggage 10/3 cwt.. small articles not weighed in. Insurance 7/6 %.

Italian Boats run to Syracuse 1st. Class £2. 3s. 2nd Class £1. 7. 2. (8 hours crossing) or London 1st. Class £13. 4., 2nd. Class £8. 16. (Variable). Government Trawler to Syracuse £1. 10.

Ellerman Line, 22 Water Street, Liverpool, sails from Liverpool outwards about every fortnight. Homewards call rarely, 1st. Class £27 to £32 according to vessel, Children 2 to 5 one third fare, 5 to 12 half fare, one child under 2 free. Baggage 2 cwt. per Adult. 10% reduction to Officers, Warrant Officers, Non-Commissioned Officers and Men on production of passage papers To this Line is affiliated the Westcott and Laurence Line of 5, Fenchurch Street, E. C. who run steamers practically fortnightly sailing from W. London Dock.

There is also a fortnightly service run to and from Naples by the Adria Line that is useful to people coming overland avoiding the worst part of the Italian

railway service by which mails come to Syracuse. Good clean steamers.

Prince Line 12, Leadenhall Street, London, call outward voyage only about fortnightly £26, Children under 12 half fare, one child under 3 free. Baggage $2\frac{1}{2}$ cwt. or else 20 cubic feet free, children in proportion. Sail from both London and Manchester.

There is also an occasional ship to Tunis where one catches the Marseilles Service.

Trips. To Sicily, Tripoli, Tunis and its hinterland etc. can be often arranged by taking advantage of the steamer services.

Ferries. Ferries Marsamuschetto to Sliema 1d. (between 4.30 and 5.30 p.m. $\frac{1}{2}$ d) and in Grand Harbour, Custom House to Vittoriosa $\frac{1}{2}$ d. but after 4.0 p.m. 1d., Sundays and Holidays 1d.

Marsamuschetto Boats are apt to be stopped in bad weather, sometimes for a week. Recourse has then to be had to dghaisas from such shores as are sheltered, or else drive or take Motor Car Service round the Harbour. Sometimes Grand Harbour also stops, but not so frequent an occurrence.

Boats. (*DGHASAS*. pron. sing. *DYSER*) By time 6d. half hour and afterwards 2d. a quarter. By trip Grand Harbour Valletta to Senglea 2d. other points 3d. and 4d. round to Marsamuschetto 1/-. By trip Marsamuschetto Harbour, Marsamuschetto to Tigne or Manoel 2d., Sliema 4. St. Julians 1/3d. When other fares are taken $\frac{1}{4}$ d. to $\frac{1}{2}$ d. but legal fare must be reached. Double fares for four boatmen if ordered by passengers. Fares double be-

tween 9.0 p.m. and 4.0 a.m. 1st November to 30th April, and between 11.0 p.m. and 3.0 a.m. 1st May to 31st October. Also double when Blue Storm Flag is hoisted by Port Department.

Cabs. (*CAROZZINI* pron., sing. *CAROTSY*) Any trip within Valletta, Sliema, Senglea, Cospicua, Vittoriosa 6d. up to 2d. passengers, 50% increase for more than 2 passengers from 4.0 a.m. to midnight or Double Fare 2 or more passengers midnight to 4.0 a.m. Fare and a half for trip and return if detention less than 30 minutes. By distance 6d. a mile and 3d. every $\frac{1}{2}$ mile or its fraction. Detention after 30 minutes 3d. for 15 minutes. By time, not exceeding half an hour 1/-, not exceeding one hour 1/8d, exceeding one hour 5d. each quarter hour.

Electric Trams. Run from Porta Reale Valletta, to Cospicua via Casal Paula also to Birchircara via Hamrun and also Zebbug via Hamrun and Curmi,

Lift. From behind Custom House to Upper Barracca 1d. In uniform $\frac{1}{2}$ d.

Railway From Porta Reale Valletta to Città Vecchia, main stations at Hamrun, Birchircara, Attard. There are two stations at Città Vecchia separated by a tunnel under the city the further one being called Museum and is that which is nearest to Imtarfa Barracks.

Cars. Motor Hire Services run from Sliema round the Harbour to Valletta. Fares 4d. When Ferries are not running or on Sundays and Festas 6d, they are

thrifty souls. There are also several other irregular services in existence starting from outside Porta Reale.

Servants. An important item in Malta and some times an unsatisfactory one. In those well trained from a British point of view prices run per month as follows;—Man cook £ 4 to £ 6 and requires someone to do his rough work. Woman Cook £ 3 to £ 4. 10 or more. Maids £ 3 to £ 4 and food, many also now “sleep in.” Fatigue Man £ 2 10., Grooms £ 4, Motor Drivers £ 4 10 to £ 6. (See Motoring) Valets £ 4 to £ 5. If not speaking any English and more or less untrained to British ways, Girls 10/- to 15/-, if more experienced £ 1 to £ 1 10. Strong young girls will come from 4/- to 6/- but are absolutely raw. Servants work well, but of course require supervision. All expect leave on all the principal of the innumerable Festas. “Sleeping in” is quite a new institution, it was very rare twelve years ago. Notice is 15 days on either side if paid by the month, or one day if paid by less.

Health. Detailed instructions as to sanitation are given in Local Standing Orders and in Pamphlets issued by Military Medical Authorities, or Public Health Dept. who are always most ready to give advice on any point. Nearly all illness arises primarily from chills which, until one knows the place well, are very easily caught. One is apt to forget that, though the day is hot, the nights often strike very cold. Children are very apt to contract Enteritis unless they are carefully looked after as regards Clothing and Food. Everyone must beware of unripe or over-ripe fruits, salads and uncooked vegetables. All Fruit should be peeled. It is advisable

to wear Kamarbands, and also have wraps if crossing water after sundown. Houses and their offices should be kept scrupulously clean, some disinfectants such as Izal being used in the washing water. *Goats Milk is prohibited*, but tinned milk is easily procurable in all sorts of brands, small tins that can be quickly used up after opening are preferable. All drinking water must be boiled. All foodstuff should be in fly proof safes or covered with gauze frames to keep off not only flies, but dust. Bathing is good but one should not, anyway at first, remain too long in the water, and never stand about in the sun without head covered or clothes. There are good English Chemists. Mosquitoes and what are worse, so called sand flies, are prevalent in most houses in hot weather, fleas are plentiful and *bigger game* of more than one sort are not lacking unless care is taken.

A Summer Health Camp is usually pitched annually at Ghain Tuffieha, a bay with most excellent sand beaches. some 12 miles from Valletta on the West Coast of the Island. This is a most beneficial institution and a stay there is much appreciated by all who are fortunate to get accomodation.

A good modern Hospital open to Military and Civilians is included in the Convent of the Blue Sisters. Patients being attended by their own Medical men.

Clothing. Winter clothing can be brought and furs are worn, as the winter is cold. For summer you require light things suitable for tropics and light wraps and overcoats for evening wear as it is then one catches chills. Thin flannel suits, light tweeds muslin dresses, light blouses, holland type of coats and skirts and for

children drill suits for boys, cotton and muslin frocks for girls. Light flannels are obtainable and are very suitable, cotton goods are comparatively cheap, but dress material expensive and little selection. There are many good and reasonable dress makers, and sewing women are obtainable. Service Dress is worn in Winter, Khaki Drill in Summer. Mackintoshes and Waterproofs are necessary especially for school children. There are several quite good Tailors who make suits and uniform well below Home prices, also good Bootmakers who make well and are also much under Home prices, if you have your own lasts, bring them. There are satisfactory hosiers in business too, sports gear is procurable of good English makers.

Shops. Satisfactory. Owing to Customs, prices rather over Home ones and choice is rather restricted. Junior Army and Navy Stores have a good branch in Valletta, groceries can be got by Service people from Navy, Army and Air Force Institute, and there are also several good Maltese shops. There is a Market for fresh provisions and good vegetables come in carts to the door.

Food Very satisfactory for a warm country. There is a Central Market in Valletta, good beef, mutton (watch however for goat) and pork obtainable. The Beef and Bread served out by R. A. S. C. is quite good. A Market List is published weekly in the local papers. Taking market quotations per Lb. for April 1922 the Beef frozen -/10, Fresh 1/-, Mutton 1/-, Lamb 1/-, Pork 1/., Fowls 4/- to 5/-, Ducks 4/6 to 5/6. Pigeons 1/- 1/3, Rabbits 1/- 2/9. One can get

Wild Duck, Plover and Quail in season, Potatoes 2d, Bacon 1/7, Butter (Cork or New Zealand) 2/4, Margarine -/9, Eggs 1/2 dozen, Fish is fairly plentiful but by no means cheap, Fruit plentiful and cheap. At the various seasons Oranges, Apples, Figs, Lemons, Melons, Grape Fruit, Pomegranate, Loquats, Strawberries also Cherries, Peaches and Apricots (not up to English), Tobacco, Spirits, Wine cheaper than at Home (there are quite good local wines White and Red). Beer and Stout dearer. Water and Milk are referred to under "Health," English groceries obtainable at various large establishments, Service people mostly dealing with Navy, Army and Air Force Institutes. There is an English Confectioner.

Motoring. Freight £ 3 a ton, Customs Duties 15 % on value and landing charges about £ 2. Licences Car £3. 3. 0. Entrance to Valletta £ 1. 1. 0. Permit for Strada Reale £ 1. 1. 0. Driving 5/- local certificate of proficiency required for latter. Petrol 2/8 gall. (1/11 Military rate) Oil American 4/6, Shell 7/6, other English oils 8/6 to 10/6 (5/- Military rate) Speed Limit 20 Miles p. h. 8 Miles p. h. Towns and Villages. Several Car Agencies mostly for Americans; Packards, Dorts, Overlands, Fords, Chevrolets almost entirely. Repair facilities poor, capabilities practically limited to replacements of parts of American Cars. Accessories almost nil except American spare parts, nothing much in motorities stocked unless an article is in very general demand.

Garages cost £ 10 to £ 30 per annum. Drivers £ 4 10 0 to £ 6. a month, can clean cars and frequently drive noisily, riskily and spasmodically, want of educa-

tion prevents them being much use, except under close supervision for overhauls, for repairs etc., no use at all. Hire plentiful—1/- hour for four passengers, 1/6 for six, waiting 1 hour free, then 3/- an hour. Four passengers £2. 5. 0 a day, Six passengers £3. 10 0 a day, special prices dinners and dances. Climate is warm but special cooling devices not necessary. Main Roads well made and many by-roads suitable for motor-ing. All of soft stone (no flints)cuts up badly after heavy rains and is slippery after a shower. The pot-holes are long ones, so wheel reaches the bottom, consequently there is a lot of spring action. By-roads in most places not much broader than a car and a half with stone walls, so there is no give and take as in a hedged road. General contours undulating and roads winding, a few steep pitches but nothing to bother about. Tyres wear well owing to soft roads, but in hot weather patches are apt to leak from the heat. Rule of road as in England. Good maps obtain-able locally. Small or medium Cars most suitable.

A Club, viz. The Malta Automobile Club affiliated to Royal Automobile Club is in existence, open to Motorists (Cars or Cycles) even if they do not actually own a car.

Clubs, Sports, Amusements. This mostly ap-plies to Service people, but Civilians are admissible to many, if numbers admit on application to Secretaries Union Club. No Hunting, or Shooting except a few Doves, Snipe, Woodcock in season, all of course being birds of passage, Quail can be shot April, May and again September. All open air amusements practically concentrated at Marsa a plain in a shallow valley about

2 miles from Porta Reale. Any big Military Parades are held there, and there is also the Race Course. There is a good and comfortable Sports Club House down there, light refreshments provided and at which Dances are sometimes given. Tennis, Croquet, Stikke, Squash, Badminton, Golf played there. The Polo, Cricket, Football and Hockey grounds adjoin. Cricket having matting pitches on cement. The subscription also covers Racquets (Court in Valletta) and Gentlemen's Bathing Club at Tigne, Sliema. The Polo and Racing Clubs and Ladies- Bathing Club Tigne Sliema, are separate from Sports Club. Subscription Sports Club various rates for different Categories but Army Officers pay entrance fee 20/- (10/- if under rank of Captain). Playing Members £ 4 a year and non playing Members £ 2. 10 0, if paid monthly 7/6 and 5/-. Racing £ 3 a year with 2 Ladies' Tickets, otherwise £ 1 10 0. Polo £ 3 per annum. Ponies, Barbs and Arabs at least £ 60 £ 80. Naval and Military Ladies Bathing Club at Tigne for Wives or Members of Families of British Officers and Civil Officers in Admiralty or War Office employment. Entrance fee 12/6, Subscription, Bathers, 12/6 Non Bathers 7/6 payable in advance, monthly 3/- or 2/- Nonbathers.

The Union Club, a celebrated Club of its kind, admits Officers of H. M. Forces and Gentlemen residing in Malta, Entrance fee £6, paid in six monthly instalments if desired. Subscription Quarterly £ 1 10 0. in advance. Visitors can be proposed for a Week, after that can be admitted on proposal as Temporary Members. It also has a sub-section located in its building for the Wives and Daughters of Members. Subscription 10/- per quarter. Other Ladies proposed by a

Member and approved by Committee can also join 15/- a quarter if the somewhat restricted space admits, provided they are not related to *eligible* Club Members.

There are numerous Competitions for Cups, such as Officers Tennis, Sports Club Tennis, Athletic Championship, Garrison Cricket, Governor's Cup, Army & Navy Match, Officers Billiards (Army & Navy). Many Shooting Cups, an important one being "Collingwood" for teams of Units armed in 1906 with the Carbine. Several Football Leagues and Cups such as Governor's Cup, U. S. Challenge. U. S. League. Plumer Cup, Schools League, Army & Navy Match, Polo Challenge, Racquets, and at least eight Golf Competitions.

Rowing. The Governor's Cup is competed for annually amongst Companies of Units and Units hold Regattas. There is also Boating and Fishing available and Sailing Boats can be hired.

Bathing. Excellent. The water is so clear as to be dangerously deceptive as to its depth. In Valletta district it is all in deep water. Non-swimmers will find sand beaches at Gneina, Ghain Toffieha, Melleha and near Marfa. Bathing in winter is not recommended as severe chills are likely to be contracted thereby.

Cycling. Is not at all bad, is a very good way of seeing the Island. There are lots of Machines for hire both Motor and Push and several good local repairers.

Carriages and Dogcarts or Ponies can be readily hired at reasonable prices.

Walking. Can be indulged in except in excessive summer heat. The map is fairly accurate in showing roads and tracks, the latter are of course rough. There are also nearly always rough paths down the beds of the wields (Water courses.) All these are interesting and picturesque. Little valleys, rock formations, rock tombs and dwellings come to light in the course of such rambles. Città Vecchia, the country stations, and the ends of the three tram lines (especially Zebbug) are all good starting points. In a few localities where the tourist has been foolishly scattering coppers and silver the children are apt to be a nuisance, otherwise the country people are quiet and obliging and do not in anyway interfere with one's peregrinations over the tracks and paths. They of course only speak Maltese, a pure variety of that of the Capital.

Societies. There is an Amateur Dramatic Company producing plays etc. annually in the season. An Amateur Art Association with annual exhibitions, various musical societies, mostly not of a permanent nature. A Literary and Scientific Society. Several Soldiers Institutes.

Theatres. etc. Opera (Italian) November to April. Stalls 4/- Festas etc. reduced prices. The Manoel Theatre the oldest in Europe, with Italian and formerly occasional English Companies open from time to time, also used by the Amateur Dramatic Company. A small Theatre in Sliema. The Royal Engineers have a small Theatre in Floriana. In Summer, Bands play frequently on Palace Square, in Gardens, Squares, Ghar-id-dud, Sliema, and other similar places and are very popular.

In the Season November—April, especially before Lent, dances are fast and furious. The Carnival Fancy Dress Ball at the Palace, once one of the features of not only the Island, but of the surrounding countries is at present in abeyance. Amongst these festivities are always some given by Warrant Officers and Sergeants of the various Units. Picnics and Boating in Summer are frequent. There are two Libraries with reading rooms viz.—Garrison Library, Palace Square, this also admits Civilians under certain headings. Proprietors pay entrance 10/- and 10/- a quarter. Subscribers £1 entrance and 10/- a quarter. Monthly Subscribers Visitors 7/6 all have to be proposed, seconded and elected, also a very fine Public Library, Piazza Regina, Strada Reale.

Churches. *Church of England* St. Paul's Cathedral Church, Valletta, at which Parade Services take place, Barracca Garrison Church, Valletta, at which a good homelike evening service with hearty singing is held on Sunday evenings. Trinity Church, Sliema, St. Lukes Garrison Church, Tigne, and a smaller Church at Imtarfa Hospital.

PRESBYTERIAN, St. Andrews Scots Church, Valletta, with mission Chapel Strada Stella Maris, Sliema,

SALVATION ARMY, Floriana.

ROMAN CATHOLIC, Santa Maddalena, Valletta.

INSTITUTES, Various Soldiers' Homes and Institutes exist in Valletta, Floriana. Sliema, St. George's, Margherita (over Grand Harbour) for the various persuasions.

There is a Mothers Union-Branch, Guild St. Helena

and a very flourishing Branch of Sailors' and Soldiers' Families Association.

Newspapers. The best way to get English Magazines, papers, etc. is to order straight from Home, but they can be procured locally. The leading English local papers are "Daily Malta Chronicle" 1½ and the (Daily) "Malta Herald" 1d. The leading Italian paper the "Malta" 1d.

Map. A good Map of the Island 2 inches to a mile is obtainable locally, mounted on linen or unmounted.

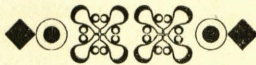
Directory. A local Garrison Directory, a pre-war flourishing monthly pamphlet, is beginning to be again issued at long intervals.

Dogs. Dogs have to go into quarantine for 3 months at Lazzaretto on Manoel Island. Each has to have a licence cost 2/6 and 1d. stamp (Country guard dogs 1/-) renewable annually, a metal badge for wear being issued, if this is lost another licence has to be taken out. For all dogs found by Police without badge owner is liable for 5/- Gun licence costs £1 and the eternal 1d. stamp.

Schools. There are several good English Private Schools for boys and girls and good Government Secondary Schools. There are of course the usual Army Schools.

In closing a bit of advice which applies not only to Malta in particular but to all foreign stations in general.

Don't think because you are British that you know everything or that everything that is excellent at Home must be equally so in Malta. Allowance must be made for all the differences social, racial, and climatic between Home and Malta, and it is as well to find out the local reasons for departures from Home customs before you condemn them or disregard them. Also remember that *you* are the foreigner when here. Remember too that you represent your country, and therefore that its people and reputation is apt to be gauged by *your* actions. Never therefore give anyone cause to think that that country is one from which overbearing illmannered people, ignorant of the world, issue to annoy other people. Being rude to people never enhances the prestige of either your nation or yourself. Bear in mind that all foreigners do not think the same way as the British, and that a civil tongue and good temper will do much, very much, to maintain easy intercourse with the Maltese and materially smooth the path of life in Malta.



GENERAL PLACES OF INTEREST.

MALTA.

VALLETTA.

Fortifications. The Fortifications are in themselves a most interesting and unique study, being very perfect examples of the elaborated system of their time, they may be said to be more than a Maltese possession, they are European.

Churches. *SAN GIOVANNI*, Strada San Giovanni, one of the sights of Southern Europe.

SAN PAOLO, Strada San Paolo.

SAN DOMENICO, Strada Mercanti.

MOUNT CARMEL, Strada Teatro.

VITTORIA, oldest Church in Valletta, opposite Castille.

CHAPEL OF BONES, open from time to time only. Order obtainable from Public Works Office.

Guard Room. Palace Square. Permission to view obtainable Head-Quarters, Castille.

Palace and Courts. Palace Square.

Council Chamber. In Palace. Fine Tapestries.

Armoury. Entrance in Prince Alfred's Court. The Palace.

Hall of St. Michael and St. George. In Palace. The original home of "The Most Distinguished Order."

Public Library. Piazza Regina, Strada Reale.

Museums. Strada San Giovanni, shortly to move to Auberge d'Italie top of Strada Mercanti also Museum Natural History at University.

St. Elmo. Fort at point between the two Harbours with Lighthouse; contains a historic chapel.

Manderaggio. Sometimes called Underground Malta. A curious mass of tall houses with only narrow alleyways as streets, in a self contained compass of about 100 yards a side, with only three entrances, at bottom of an old Quarry in the heart of Valletta. Many exaggerated stories exist of its dangers. A police guide is desirable as it is a regular maze.

Gardens. Upper and Lower Barraccas and Hastings Gardens, Strada Molino.

Buildings. There are many fine buildings and private houses, a few of the most noticeable are:—The seven Auberges, or Head-Quarters of the representatives of the various "Langues" or nations, of the Knights

of Malta, viz.— (1) *Castille* (Army Head-Quarters, Naval Head-Quarters and Signal Station) top of Strada Mezzodi and Strada Mercanti, (2) *d'Italie* beside it, (3) *de France* Strada Mezzodi, (4) *de Provence*, Strada Reale, (Union Club), (5) *d'Auvergne*, Strada Reale, (Police Court), (6) *d'Aragon*, Piazza Celsi, Strada Vescovo, (7) *de Baviere* near sea end of Strada Forni. *The Opera House*, Porta Reale, *The Hospital of Knights of Malta* sea end Strada Mercanti with the magnificent "Long Ward" now Police Head-Quarters, *The Borsa*. Strada Reale.

VALLETTA DISTRICT.

Floriana. Has a fine Church, San Pubblio, (St. Paul's host after his shipwreck,) and has several gardens, viz. The Maglio Gardens which derive their name from the same game as does Pall Mall in London. The Argotti Gardens which include the Botanical Gardens. Sa Maison Gardens in the fortifications overlooking Pietà Creek and P. & O. moorings. The Central Civil Hospital is also located here.

Sliema. A residential suburb over the Marsamuscetto Harbour with promenade and drive along the sea front to St. Julians. A Branch of the Union Club is here, celebrated for its weekly open air Dinner and Dances in Summer, also there are Sports Club Tennis Courts and the Bathing Club. Royal Artillery Mess and Barracks at Tigne.

Vittoriosa, Cospicua, Senglea. (Formerly Borgo, Burmola, Isola). Across Grand Harbour by ferry. The centre of the fighting in the Great Siege 1565,

consequently containing many points of interest, *St. Angelo Fort* (now a Naval Quarter) *San Lorenzo Church* with the adjacent *Oratorio San Giuseppe*. The old Clock Tower in Senglea. The Look-out Turret in *Isola* and remains of old Fort of *St. Michael*. The Royal Dockyard is over here on the French and Dockyard Creeks.

Tarxien. Tram to Paula and walk $\frac{3}{4}$ mile up the main street and then to left. A "Hagiar Kim" remains.

Halsafieni. (Hypogeum) An underground Temple of very prehistoric origin, most interesting and unique, less than $\frac{1}{2}$ mile from Paula tram at top of main street.

Cemeteries. *Addolorata* a very fine cemetery on *Marsa* foot of Paula slope is terraced and resembles Highgate.

Ta Braxia outside *Portes des Bombes*. The English Cemetery.

There are also Jewish and Mahommedan Cemeteries near *Addolorata*.

INLAND.

Città Vecchia. ($6\frac{1}{2}$). Train. The old capital also called *Notabile* and *Mdina*. A walled city with beautiful Cathedral and some fine city buildings, outside walls in its suburb *Rabato* is Museum and Roman Villa, Catacombs, *St. Paul's Grotto* and a local linen industry.

Boschetto. (*Uied il Buschett*) ($8\frac{1}{2}$). Drive $2\frac{3}{4}$ miles from *Città Vecchia*. Adjoining *Verdala*, H. E. The

Governor's Summer Palace, Public Gardens and orange groves, cool shade in Summer.

Sant'Antonio. (4). Train to Attard or tram to Birchircara and drive or walk a mile. Very fine, well kept, Flower Gardens and orange etc. groves and fountains. Adjoining H. E. The Governor's Spring and Autumn Palace.

Musta. (6). Drive, or take tram to Birchircara and walk or drive $2\frac{1}{2}$ miles. Very fine church with one of the largest Domes in the world, erected mainly as a labour of love by the inhabitants.

Mensia. Shown as St. Andrea on Map. About 2 miles from Sliema ferry, drive to top of Wied il Ballut, or walk to lower end of Wied and take field path up hill. A semi-underground church with a legend.

COUNTRY GENERALLY.

For convenience the places are taken in order of their position following round the coast.

Marsascala. (6). A small fishing bay with bathing.

Delimara Point. (8). With Lighthouse. S. E. point of Island, forming eastern side of Marsa Scirocco Bay.

Ghar Dalam. ($6\frac{1}{4}$). At Birzebbugia, drive, or take

tram to Paula and drive $3\frac{1}{2}$ miles, a cave rich in prehistoric remains. Key and guide obtainable in village, inquire at Seaplane Hotel.

Temple of Hercules. Close to Ghar Dalam. Ruins.

Hassan's Cave. ($9\frac{1}{4}$) Via Birzebbugia, reached by a stepped outside ledge over face of cliff.

Wied Iz-Zurriek. ($6\frac{1}{2}$). Drive. Beyond Krendi, or via Zurrico, Blue Sea Caves.

Tal Makluba. ($5\frac{1}{2}$). Drive. Beyond Krendi, a curious pitlike subsidence of soil.

Hagiar Kim. ($7\frac{1}{4}$). Drive. Prehistoric ruins beyond Krendi.

Mnaidra. Prehistoric ruins connected with Hagiar Kim by a path of about $\frac{1}{2}$ mile.

Ghar Lapsi. ($7\frac{3}{4}$). Drive, Walking compulsory last mile. Is to south of Siggieui small sea caves and fishing centre.

Ghirghenti Palace. ($7\frac{1}{2}$). Country Palace of Grand Inquisitor. Drive, or tram to Zebbug and drive $2\frac{3}{4}$ miles, or drive $3\frac{1}{4}$ miles from Città Vecchia.

Laferla Cross. ($6\frac{3}{4}$). Very conspicuous in landscape, very fine view over Island, walk 1 mile from Ghirghenti or drive 2 miles from Zebbug and walk

up precipitous and rough hill path. A large quantity of the water supply is drawn from this district.

Dingli Signal Station. ($8\frac{1}{2}$). Drive $2\frac{1}{2}$ miles from Città Vecchia. One of the highest points in Island 827 feet. Filfola Island very clear from here.

Imtahlep. ($9\frac{1}{2}$). A pretty little valley used for picnics, drive $3\frac{3}{4}$ miles from Città Vecchia, bad road far end.

Concezione. (10) End of Bengemma Hills, fair drive and good view, Città Vecchia $3\frac{3}{4}$ miles.

Ghain Tuffiha. ($10\frac{3}{4}$). Drive, or train to Città Vecchia and drive $6\frac{1}{2}$ miles, Sand Bathing Beaches and excellent sand and rock bathing in adjoining Bay of Gneina to the south. Summer Rest Camp and Naval Camp and Rifle Ranges.

Marfa. ($15\frac{3}{4}$). Drive. Extreme N.W. end of Island. Landing place for cross channel passage to Gozo, boats can be got from Migiarro (5 miles) by phone with previous notice.

Selmun Palace. ($11\frac{1}{2}$). Drive, via St. Paul's Bay. Old Knights Palace, fine view from roof. Permission from Public Works Office, Valletta.

St. Paul's Bay. ($9\frac{1}{2}$). A seaside resort. Boats easily got to cross to St. Paul's Island scene of Shipwreck. (Acts. 27-8) Statue on Island.

Coast Road. From Salinas to Pembroke, some 4 miles, nearly all by sea edge.

Most village churches are worth visiting.

All the names of places given will be found on the "Map of the Island of Malta" or that of "Gozo" Scale 2" to 1 mile, purchasable locally.

Details of many of above places of interest are given in various pamphlets procurable at Government Printing Office, the Palace, or local Stationers.

GOZO.

The second largest Island of the Malta group. Lies North West of Malta with Comino in between—Local Population 1921 22,500. Harbour Migiarrro (Mgiarr). Capital Victoria (old name Rabato). Is about 9 miles long and $4\frac{1}{2}$ broad, is hilly, much more generally cultivated than Malta, and has much larger fields, mostly devoted to crops rather than to vegetables. The inhabitants are simple, pleasant looking and courteous, a rural population. They don't beg,

The Government Printing Office at the Palace, Valletta, sometimes has Maps of the Island in stock, and Critien has quite good Postcards.

Fort. Fort Chambray used as Barracks when Troops are stationed in the Island, is on a flat topped hill 250' above sea overlooking the Harbour of Migiarrro, it is of large extent. The enclosed land is rocky and covered with weeds, and a good amount of spear grass and thistles. It is obsolete as a Fort.

Transport. Steamer "Princess Melita" with Mails,

leaves Valletta daily very early morning, returning after about one hours stay; time of passage 2 hours each way, hours are advertised. In summer, weather permitting, Motor Launch Services are running.

One can also motor to Marfa after phoning to Police Migiarro to send a boat to meet you (Marfa—Migiarro 5 miles).

Mails. Head Office, Post Office at Rabato also one at Migiarro Harbour on a small scale, still smaller ones in large Villages. Post arrives and leaves daily week days. Telephonic Communication with Valletta.

Bathing. There is a small bay with sand below the Fort, a very steep pitch down all the way; also a sandy Cove North side of Migiarro Harbour. Otherwise there are various other places, e. g., Ramla Bay all sand, Bahar Bay (Marsal Forno), Fungus Rock, Xlendi, Xini. Also dghaisa over to Comino where there are several beaches, the best perhaps between Comino and Cominotto which has beautiful sand.

Fishing. Very fair sea fishing. Mackerel from rowed dghaisa. Best to go right out to sea, but a few can be caught in the bays. Deep sea fishing, but this entails usually at least 24 hours in open boat out of sight of land. One can also go out to see the Basket Traps lifted round the coast. In September Lampuchi fishing, Xlendi District mainly.

Roads. The main roads are good, there are also numerous rocky tracks, paths, goat paths, water courses,

cliff steps and wall paths that enable one to take interesting walks all over the Island.

Hotels. Of Hotels there are The "Grand" at Migiarro a small one, people do stay there, but more usually go to The "Duke of Edinburgh" at Rabato (Victoria) the Capital, the best Hotel in Island. quite passable and good as Hotels go, has a telephone. Charges 9/- a day or 8/- if more than one. There is also another small Hotel at Rabato,

Sometimes people take a small house, generally at Migiarro, Marsalforno, Xlendi or Rabato.

Food. Meat, Fish, Poultry, Vegetables, Fruit, Eggs, local Wine, plentiful and cheap, Groceries better got from Valletta. Can be ordered by phone in morning and come out by Motor Boat that leaves Valletta Harbour in Summer in the afternoon, or by Steamer next morning. Local Bread is quite eatable. No Ice obtainable, but drinks, with a good well, can be kept cool. Beer and fair Whisky is procurable from Duke of Edinburgh Hotel.

Flies are a nuisance, especially the biting kind. They can however be usually kept under by using blinds, swatters and traps. Mosquitoes are worse than in Malta.

Excellent local cloth from "Casa Industriale" at Rabato, it also stocks and makes Lace, but the latter is procurable cheaply anywhere, as almost all women work at it.

Gozo gives one a very good weekend change. If staying at Rabato the view from the Castello is fine

and from it one can see all the principal roads radiating from the City, and therefrom plan excursions for the day.

Places to See. In Rabato:—The Castello in which is the Cathedral, and a walk round the walls that gives one an excellent idea of the Island and fine sunrise and sunset effects. Then there are (miles in brackets from Rabato).

Annunziata Gardens near Rabato on the Xlendi Road.

The Lighthouse at Giordan, ($2\frac{1}{2}$) (permission from Collector of Customs, Valletta).

Gigantia ($2\frac{1}{2}$) a Hagiar Him, permission from the owner, Marquis Desain.

Stalactite Cave at Xaghra ($2\frac{3}{4}$).

Fungus or Generals Rock (4).

Harbours of Xlendi (2) and Xini (4).

Wardia (4) one of the highest points 540 ft.

Bays of Marsal Forno (2) and Ramla (3).

Caves of Calypso near Ramla Bay and those of Comino and Xlendi.

To visit the more distant parts Carozzini are easily obtainable. Fares on the lines of those in Malta, but it is best to get information on this from the Police.

COMINO.

Lies between Malta and Gozo. Length over a mile, breadth about a mile, Has an old Hospital and Cemetery and a large Torri bearing Arms of Alof de

Wignacourt (1618) on the site of a former Torri of early fifteenth century. Also ruins of a battery on a site used for such purpose from very early times. The port is Santa Maria, where there is the Island Church of Annunciata, distance from Migiarro by sea $2\frac{1}{4}$ miles. There is also a boat landing with small quay and excellent sand bathing in Cominotto Channel $1\frac{1}{2}$ miles from Migiarro. There are a few small farms, rough roads run about the Island, but the cultivation is on a very small scale. Has been frequently used from Knights time onwards as an isolation station for serious outbreaks of epidemics, and also for the placing of Artillery Targets. There are caves with beautiful colour effects on the S.W. side, south of Cominotto, that have to be reached by boat.

COMINOTTO.

A very small Islet, separated by a narrow strait with sandy bottom on the western side of Comino, has been used for storage of high explosives.

FILFOLA.

High rocky Islet southward of Malta. Formerly used as Naval Artillery Target. Is said to have a kind of black lizard not found anywhere in the other Islands. Landing difficult.

BOTANY and the 'Ologies.

The Botanist will have his researches well repaid as there are many interesting plants indigenous to the Islands. It is pity that the beautiful wild flowers are so small. There is a good Horticultural Society and also an Agricultural one that hold Exhibitions and Shows annually, subscription to each 5/-.

The Ornithologist can derive much interest from the Study of the very extensive varieties of birds that are met with. Some are most unexpected. They are all migrants passing through. It is a very regrettable that these most charming and interesting visitors should be ruthlessly shot down by the local "sportsmen."

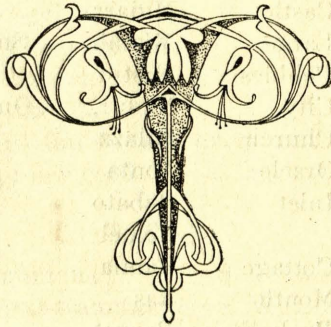
The Entomologist is able to add to his collections, but many of the butterflies and moths are similar to the English types. If he should use the the net, much excitement will be experienced and some risk to limbs in wild chases over the rough ground.

The Geologist should examine the strata and general structure of the Islands, more especially the "Great Fault" that extends across from Torri Madalena to Fomm ir-Rieħ, called locally TARGIA from its resemblance to a step. There are many curious rock formations principally in the hilly lands and cliffs south west of Malta and Gozo. There are no minerals.

The Conchologist can find peculiar and uncommon shells in sea, on land and in the strata.

The Archaeologist, apart from the many unique prehistoric remains and ancient buildings, can join a Historical Scientific Society, annual subscription 5/-, which interests itself in his particular study,

Additional to the Museums there are several private collections of most of above 'ologies, the owners of which are always most courteously disposed towards their fellow enthusiasts.



Translations of some of the place names on the Maps.

(Spellings apt to differ slightly)

Abiad	White	Hofra	Hole
Bahar	Sea	Hotba	Hillock
Ballut	Oak	• Imtarfa	Projecting
Blata il Baida	White Rock	Gnien	Garden
Belt	City	Kolla	Knoll
Bies	Falcon		
Bir	Well	Marsa	Harbour
Blata	Rock	Makluba	Downfall
Boschetto	Small wood	Mdina	Town
Cala	Bay	Mensia	Forgotten
Casal	Village	Merhla	Flock
Castel	Castle	Mgiarr	Port
Cbira	Large	Misrah	Small open space
Cghak	Pebbles	Mistra	Hidden
Città	City	Nadur,	Outpost, Lookout
Cnisia	Church	Palazz	Palace
Dabrani	Oracle	Ponta	Point
Dahla	Inlet	Rabato	Capital
(pl. Dahliet)		Ramel	Sand
Dueira	Cottage	Ramla	Sandy Beach
Fomm	Mouth	Ras	Cape
Gebla	Rock, Stone	Razzet	Farm
(pl. Gebel)		Rdum	Cliff
Ghadira	Marsh, Pond	Rieh	Wind
Ghain	Fountain	Safra	Yellow
Ghar	Cave	Scoll	Crag, rocky Islet
Ghasel	Honey	Sliema	Salutation
Ghasfur	Bird	Targia	Step (geol. fault)
(pl. Ghasafar)		Tuffieha	Apple
Gholia	Hill	Torri	Tower

Golf	Gulf	Wardia	Lookout post.
Gzira	Island	Wied	Valley
Hal	Village	Xaghra	Sterile
Hamra	Red	Xatt	Shore
Hamrija	Soil	Xini	Galleys
Hanzir	Pig	Zebbug	Olive
		Zghira	Small

Pronunciation of a few letters.

c	like ch in Church if preceeding e or i.
ch	like k.
g	soft like j.
gh	like g in get when in a word but practically omitted when beginning one.
j	like y in yet.
x	like sh in she.
z	like ts.

Vowels as in Italian and every one in pronounced
e.g. Sliema is pronouced Slee-ay-ma *not* Sleema.

WINDS.

N.	Tramuntana.	S.	Nofs in-nhar.
N. E.	Grieg it-tramuntana.	S. W.	Lbic.
E.	Lvant.	W.	Punent.
S. E.	Xloc lvant.	N. W.	Majistral.

ITALIAN.

N.	Tramontana.	S.	Mezzogiorno.
N. E.	Grecale.	S. W.	Libeccio.
E.	Levante.	W.	Ponente.
S. E.	Scirocco.	N. W.	Maestrale.

INDEX.



	PAGE.			
Archaeology				39
Area				3
Agriculture	3	4	33	38
Auberges				28
Baggage				6
Bands				22
Bathing	20	21		34
Boats			13	21
Botany				38
Cables				11
Cabs			14	36
Camp				16
Carriages				21
Cars			14	18
Churches	23	26	30	33
Climate				5
Clocks				7
Cloth	4	29		35
Clothing				16
Clubs			19	28
Coinage				11
Comino				36
Cominotto				37
Conchology				38

INDEX.

	PAGE
Cricket	20
Customs	6
Cycling	21
Directory	24
Dogs	24
Duties	6
Electricity	8
Entomology	38
Ferries	13
Festas	8
Filfola	37
Fishing	21 34
Floriana	9 28
Food	17 35
Football	20
Fort Chambray	33
Fruit	4 15 18
Furniture	10
Garages	18
Gardens	9 27 28 30
Gas	8
Geology	38
Golf	20
Gozo	33
Headquarters	8
Health	15

INDEX.

	PAGE
History	5
Holidays	8
Horticulture	38
Hotels	10 35
Hospital	16
Houses	10 35
Language	4
Libraries	23 27
Licences	18 24
Lift	14
Lighting	8
Mails	11 34
Maps	24 33
Meteorological	6
Milk	16 18
Motoring	18
Museums	27 29 39
Newspapers	24
Ologies	38
Ornithology	38
Petrol	18
Place Names.	40
Places to see	26 36
Polo	20
Population	3 33

INDEX.

	PAGE
Postal	11 34
Pronunciation	41
Racing	20
Railway	14
Rents	10
Residential	8
Roads	19 34
Rowing	21
Sands	21 34 37
St. Julians	10
Season	23
Schools	24
Servants	15
Shipping	12
Shooting	19
Shops	17
Siege	5 28
Sliema	9 28
Societies	22 38
Soil	3
Sports	19
Steamship Lines	12
Stone	4
Taxes	6
Temperature	6
Tennis	20

INDEX.

	PAGE
Theatres	22
Time	7
Trams	14
Transport	33
Travelling	12
Trips	13
Uniform	17
Union Club	20 28
Valletta	9
Vocabulary	40
Water	6
Walking	22
Weights	11
Winds.	6 41
Wine	4 6 10 35



Collis & Williams

INCORPORATING "W. KINGSTON, CHEMIST."

ENGLISH CHEMISTS

300, STRADA REALE, VALLETTA.

Branch: 4 & 5, Victoria Terrace, Sliema, **MALTA**
 Factory: 32, & 33, Via Croce Marsa,

Wholesale, Retail, Dispensing,
 Photographic and Manufacturing Chemists
 and Mineral Water Makers.

FOR THE FOLLOWING :—

MEDICINES

Prescriptions, Chemicals, Patent Medicines, Surgical Goods, Medical glassware, Medical Earthenware, Medical India rubber ware, Medical Hardware, Medical Charts, Splints Thermometers, Ships' Medical Stores.

MEN'S

Shaving Soaps, Shaving brushes, Shaving blocks, Safety & ordinary razors, Shaving brushes, Hair Lotions, Hair Brushes, Tooth powders & pastes, Tooth brushes.

LADIES'

Toilet Powders & Creams, Puffs, Perfumes, Eau de Cologne, Shampoo powders, Sunburn Lotions, Mosquito Preventive, Mosquito bite cure, Manicure goods, Hair pins Theatrical Grease paints, Rouge, Eyebrow Pencils, Crepe hair.

BABIES'

Foods Allenburys Mellin's Glaxo Nestle's Benger's Ridge's Neave's, Dryco, Savory & Moore's Horlick's, Ovaltine, Virol, Frame Food. Biscuits Rusks Feeding bottles, Teats, Valves, Comforters.

HOUSEHOLD REQUISITES

Toilet Soaps, Sponges, Sponge bags, Travelling cases Nail Brushes, Hair Brushes Clothes brushes, Combs Naphthalene Insect Powder, Disinfectants, Sun-glasses Dancing, floor Powder, Battery Chemicals, Accumulator Acid, Photographic Goods, Natural Mineral Water.

ARTIFICIAL AERATED WATERS

Soda Water, Lemonade, Dry Ginger, Lime Cream and Soda, Ginger Beer, &c. &c. in Syphons & bottles.

BANK OF MALTA

ESTABLISHED 1812

EXCHANGE BUILDINGS.

STRADA REALE - VALLETTA

Office hours—9 a.m. to 4 p.m.

Saturday—9 a.m. to 12 m.

Current Accounts opened free of charge.

Securities and valuables received for safe custody.

Advances made on good Banking Securities.

Drafts or Letters of Credit issued on all Foreign Cities.

Coupons, bills or drafts bought, or forwarded for collection.

Purchase and sale of stocks and shares dealt with in all Foreign Bourses.

Interest allowed on money deposited for fixed periods.

Small amounts received on Savings Bank System.

Every description of Banking business transacted.

LONDON BANKERS—London Joint City & Midland Bank Ltd.—Barclays Bank Ltd.—London County Westminster & Parr's Bank Ltd.—Lloyds Bank Ltd.

PARIS BANKERS—Credit Lyonnais—Société Generale—Comptoir National d'Escompte de Paris, etc.

ITALIAN BANKERS—Banca Commerciale Italiana—Credito Italiano.

Represented also by Bankers in America, the East, and all European Centres.

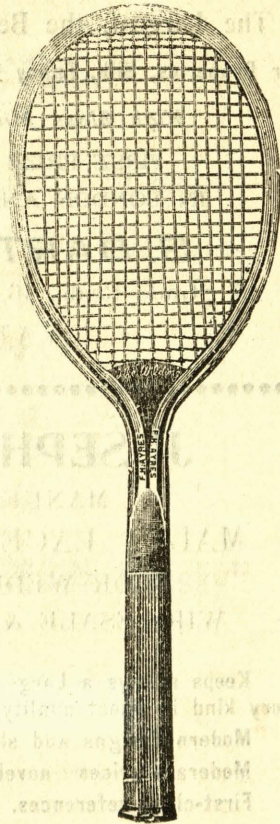
Telegraphic Address "Melitensis"

ANASTASI

**All you want
In Sports Goods
By all the leading makers.**

TRY OUR PRICES,

For your Tennis Rackets and Balls, Badminton Rackets and Shuttlecocks, Hockey Sticks and Balls, Cricket Bats and Balls, Golf Clubs and Balls, Footballs, Boxing Gloves, Jerseys, Shirts, Knickers, Football and Tennis Boots, Ankle and Knee Caps. etc., etc.



ANASTASI

NEXT DOOR TO MALTA UNION CLUB.

A LA VILLE DE LONDRES.

GRAND MAGAZINE OF NOVELTIES

The Largest, the Best, the Cheapest in Malta.

for Draperies, Silk, Fancy Goods, Hosiery, Underclothing, etc.

High Glass Military & Dress Making

FIRST PRIZE MEDALS AWARDED
IN LONDON AND LOCAL EXHIBITIONS.

S. BARTOLI GALEA

46, Strada Reale, 46, 47, 48, Piazza S. Giovanni,
VALLETTA.



JOSEPH BUSUTTIL

MANUFACTURER OF
MALTA LACE AND JEWELLERY
FOR WEDDING PRESENTS.
WHOLESALE & RETAIL MERCHANT

Keeps always a Large Stock of Genuine Maltese Lace of every kind in finest quality.

Modern designs and shapes—specialities.

Moderate prices—novelties.

First-class references.

Try and pay a visit to the Sale-Room at

222, STRADA MERCANTI, VALLETTA.

(Near the General Post Office)

SIMONDS

BREWERS.

ALE AND STOUT BOTTLERS,

WINE AND SPIRIT IMPORTERS.

READING.

ENGLAND.

Sole Agents in Malta

for Greenlees' "CLAYMORE Whisky"

MALTA BRANCH

311, STRADA REALE, VALLETTA.

STORES,

1 to 8, Right Marina.

THE COLONIAL STORES

by S. CATANIA

29 PRINCE ALBERT STREET

(Corner of Prince of Wales Road)

SLIEMA - MALTA.

GENERAL GROCERS & WINE MERCHANTS

PROVISIONS OF BEST QUALITIES AT

LOWEST PRICES.

Guaranteed English Weights & Measures

Daily Deliveries to all parts of the Island free of charge.



THE ART FURNITURE FACTORY & STORES.

CARMELO DELIA

STRADA MERCANTI No. 6, 7, 8, 9,

Timber Stores. VALLETTA. Furniture Factory.

Sda. Zecca No. 145.

Strada S. Ursola

Sda. Levante No. 15. EST: A.D. 1890. No. 51, 52, 53.

Diploma of Honour and Silver Medal awarded by the
M. S. A. M. C.

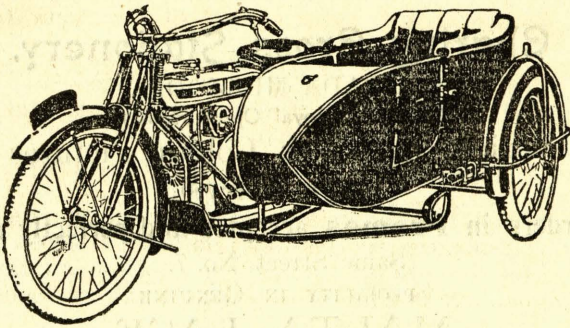
Orders are accepted for every sort of Furniture made in Mahogany and American Black Walnut constructed on sound principles upon the latest German and Austrian Catalogues.

THE ESSENCE OF MODERN AUTOCYCLES DESIGN

THE EVER RELIABLE DUAL PURPOSE MACHINE

Douglas

MOTOR CYCLES AND SPARE PARTS.



IN STOCK AT TO-DAY'S PRICES.

SOLE AGENTS:—

ANASTASI BROTHERS.

SLIEMA.

AN IDEAL MOUNT FOR BUSINESS & PLEASURE

POPULAR AMONG ALL COMERS IN ANY SPHERE.

FROM
CASTLE AND ALLEN
LONDON, S. W.

EMMANUEL & Co.
COURT,
NAVAL & MILITARY TAILORS.
227, STRADA REALE, VALLETTA

.....

Charing Cross Stationery.

STRADA MEZZODI

(Near the Royal Opera House)

Variety in Water Colour Pictures
(Malta Views).

All orders in **Frames** accepted and perfectly done.

Same Street No. 7.

SPECIALITY IN GENUINE

MALTA LACE

.....

The Royal Hotel

MALTA

Very comfortable in every way.

HARRY CINI

Manager.

M. CINI

Proprietor.

The Anglo-Maltese Bank.

ESTABLISHED 1809.

EXCHANGE BUILDINGS,

STRADA REALE, VALLETTA.

GOZO BRANCH,

STRADA CORSA, VICTORIA.

OFFICE HOURS:— 9 a.m. to 4 p.m.

SATURDAY:— 9 to noon.

Current Accounts opened.

Special Savings Bank Department.

Deposits received on interest repayable on demand
or at stated period.

Securities received for safe-keeping

Coupons collected.

Loans granted against collateral and surety.

Stock Exchange transactions executed.

Foreign stocks and bonds bought and sold.

Collection and Negotiation of Bills of Exchange
on all Countries.

Documentary Credits opened.

Drafts and Letters of Credit issued, payable
in all parts of the world.

Telegraphic Transfers effected.

Payments under Letters of Credit.

Foreign Notes bought and sold.

LONDON AGENTS:—THE LONDON JOINT CITY
AND MIDLAND BANK, Ltd.

LONDON COUNTY WESTMINSTER AND
PARR'S BANK Ltd.

TELEGRAPHIC ADDRESS-BANK MALTA.

LUCIA'S "MUSICAL ESTABLISHMENT".

35, STRADA REALE, VALLETTA.
(OPPOSITE THE MALTA UNION CLUB)

Pianos, Gramophones, Musical Instruments and Music of every description always in stock.

Depot of Military Band Instruments.

ARMY AND NAVY SUPPLIER

MUSICAL AGENCY—for providing either a Brass and String Band for any entertainment.

PROF. LUCIA'S QUARTETTE.

Estab. 1905.

The only quartette exclusively composed of professional talent.

(Repertoire up-to-date),



LEWIS MICALLEF

FLOWER DEALERS

Awarded eleven First Class Prizes of Flowers show from the Malta Horticultural Society.

No. 8D STRADA REALE, VALLETTA.

(Near the Opera House)

Telephone 136.

Patronized by Her Grand Ducal Highness Princess Louis of Battenberg.

Begs to announce to the Officers of the Army & Navy and the Public in general that he sells and hires plants and elegants Bisquet and Artificial Wreaths at very moderate charges.

PRINTING PRESS

CHRÉTIEN & Co.

The Most Reliable Establishment.

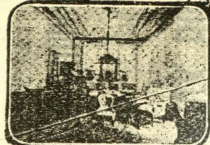
EQUIPPED WITH MODERN MACHINERY
OF ALL TYPES.

All including Printing Work Book-Biding.

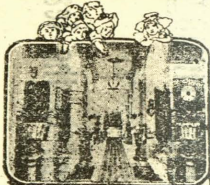
Executed in the least possible time.

Cable Address: CHRÉTIEN = MALTA.

THE LARGEST HOTEL IN MALTA BUILT ON
MODERN SANITARY PRINCIPLES.
HEALTHY POSITION, PUBLIC &
PRIVATE SITTING ROOMS.
BILLIARD ROOM, SPACIOUS
BALL ROOM



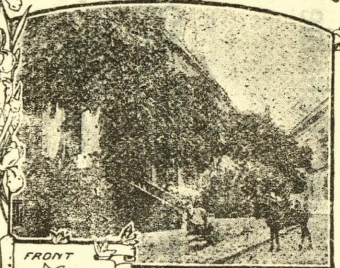
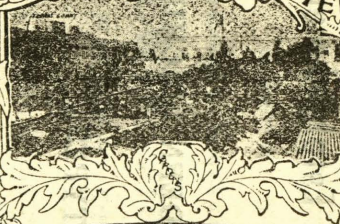
COMFORTABLE APARTMENTS



EXCELLENT CUISINE. HOT & COLD BATHS.
DOUCHE.

Special Terms for a Long Stay

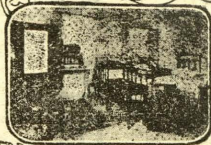
M A L T A
MODERN IMPERIAL HOTEL



FRONT

CHARLES GALEA
PROPRIETOR

C'EST LE PLUS GRAND HÔTEL À MALTE QUI A
ÉTÉ CONSTRUIT SUR LES PRINCIPES SANITAIRES
MODERNES. POSITION SALUTAIRE. SALLES
PRIVÉES ET PUBLIQUES. SALLE DE BILLIARD
MAGNIFIQUE SALLE DE BAL.
APPARTEMENTS CONFORTABLES.
CUISINE EXCELLENTE.



2 BED ROOM.



BAINS CHAUDS & FROID. DOUCHE

PRIX SPECIALES POUR Un Long Séjour.
TELEGRAPHIC ADDRESS: MODERN-MALTA.
TELEPHONE N° 23.

Cypic Yqqlca: CHELLER JVI LY

22399 2MTM19

THE ROYAL STUDIO

JOHN CIANCIO

133, STRADA TEATRO, PALACE SQUARE

VALLETTA - MALTA.

High-Class Portraiture

Oil Painting - A Speciality

Army & Navy Groups by Appointment.



Charles Grech's

FAMOUS HAND-MADE CIGARETTES

UNEQUALLED IN QUALITY

AS SUPPLIED TO NAVAL & MILITARY

R.A.F. MESSES AND CLUBS.

Packed In 10's, 20's, 50's & 100's.

10, Strada Reale, Valletta.



S. E. SANTUCCI

AUCTIONEER & APPRAISER

147, SDA. FORNI, VALLETTA.

(OPPOSITE THE CECIL HOTEL).

PURE MILK

CHOCOLATES

“LA PERUGINA”

Sole

Distributors:

**JOHN CHRETIEN
COMPANY.**

291 STRADA REALE 291

VALLETTA—MALTA.

BY APPOINTMENT
TO H.R.H. THE LATE DUKE OF EDINBURG.

V. MARICH & Co.

Cigarette Manufacturers, Cigar & Tobacco Merchants.

Wholesale Exporter to the East and the United Kingdom.

Naval and Military Messes and Clubs Supplied.

44, Palace Square, VALLETTA, MALTA,
and Billiter Buildings, LONDON, E.C.



G. VIGO

OFFICERS TAILOR

AND

OUTFITTER

28, Strada Reale, VALLETTA - MALTA.



JOSEPH CASSAR & Co.

Photographers and Photographic Goods Dealers

ARMY AND NAVY

XMAS CARD MANUFACTURER

6, Strada Zaccaria, Valletta, Malta.

Enlargements finished in Black and White, Oil or Water Colour.
Developing of Amateur Films undertaken and Best result guaranteed.

THE RICHEST PHOTOGRAPHIC PAPER ?

"Illingworth's Paper" is

Known all over the World, can be had
from:—

Messrs. CHRÉTIEN & Co.

SOLE DISTRIBUTORS:

291, Strada Reale,

VALLETTA - MALTA.

The famous

GEM PLATES

Can be obtained only from:—

Messrs. CHRÉTIEN & Co.

SOLE DISTRIBUTORS:

291, Strada Reale,

VALLETTA - MALTA.

Medals Awarded



PATRONIZED BY

H.M. King Edward VII.

H.R.H. The Duke of
Connaught.

H.S.H. Prince Lewis of
Battenberg.

By Appointment
TO

H.M. King George V.
H.M. The King of the Belgians.
H.R.H. The Late Duke of Edinburgh.
and The Late Duke of Hesse.

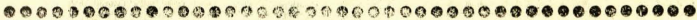
RICHARD ELLIS

Photographer

&

Photographic-Goods Dealer.

278, Strada Reale, Valletta, Malta.



By Royal Warrant of Appointment.
TO H.M. THE KING

PATRONIZED BY THE ROYAL FAMILY.

Entrusted by the Maltese Nobility with the Execution of the Jubilee Present offered to Her late Majesty Queen Victoria and with wedding Souvenir presented to Her Most Gracious Majesty our present Queen.

Michael Borg & Co.

269, STRADA REALE

Jewellers & Silversmiths

Best Style and finish Gold Gem Jewellery

A large stock of sterling silver &

Electro-Plated goods

Suitable for wedding presents and prizes

Presentation Cups of every description.

XXXIV

HOTEL WESTMINSTER

UNIQUE
CENTRAL
POSITION.

—:O:—

Home Comforts

—:O:—

STRADA REALE

VALLETTA.

Telegraphic Address

'WESTMINSTER'

TEL. No. 283.

