

Witness for  
the Prosecution

M.H.D.



1732 1960



Manoel  
Theatre

CREMONA

57

*Patron: HER MAJESTY THE QUEEN*

THE MALTA AMATEUR DRAMATIC CLUB

*presents*

WITNESS  
FOR THE PROSECUTION

*by*

AGATHA CHRISTIE

*at the*

MANOEL THEATRE

VALLETTA - MALTA

WEDNESDAY, 16th OCTOBER, 1963, at 8.30 p.m.

THURSDAY, 17th OCTOBER, at 7.30 p.m.

FRIDAY, 18th OCTOBER, at 7.30 p.m.

SATURDAY, 19th OCTOBER, at 8.30 p.m.

**BUY THE BEST**

**BUY**

**G. P. TEA**

unmistakable  
the world  
over  
since  
1830



**TEACHER'S**  
HIGHLAND CREAM  
**SCOTCH**  
**WHISKY**



**MEDITERRANEAN & BRITISH**

**IMP. & EXP. CO., LTD.**

**VALLETTA - MALTA**

Tel. Central 24109

## THE M.A.D.C. – SEASON 1963/4

The M.A.D.C. once more extends a welcome to its many patrons and supporters to the first of a new season of plays. On another page, there is a tribute to Ronald Baldwin, whose fine performances in many roles over the past three years have been an inspiration to all members.

The acting members of the Club are constantly changing as people come and go from Malta, and the M.A.D.C. is always anxious to hear from anyone interested in acting, or the stage, in any way. The M.A.D.C. tries to maintain a high standard of performance, which usually requires some previous acting experience, but also willingly accepts newcomers. Those without natural gifts for characterisation and mime, or who have no wish to face the footlights in person, may be able to help in other ways. The Club has two sorts of members — Booking Members, who have certain booking privileges, and Full Members, who may take part in all M.A.D.C. theatrical and social activities: the subscriptions are modest.

For further details, please contact the Acting Hon. Secretary — Mrs. Madeleine Attard Montalto, at 519 High Street, St. Paul's Bay, Telephone No. 73165.

---



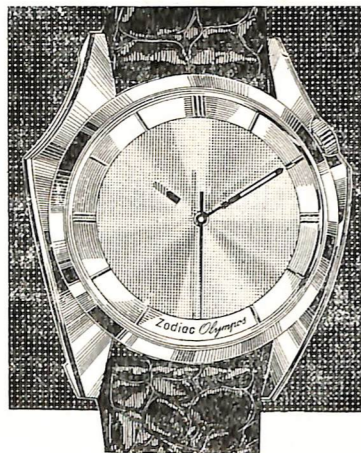
# Gieves LIMITED

**TAILORS AND OUTFITTERS**

**55, OLD BAKERY STREET,  
VALLETTA**

Tel. Central 25817

**A daring new concept  
in watch design!**



**Zodiac**  
*Olympos Automatic*

*Hair Styling?*

*Hair Colouring?*

*Hair Perming?*

**MICHAEL'S**  
**LADIES' HAIR**  
**STYLIST**

201B OLD BAKERY STREET,  
VALLETTA.

Telephone Central 25122

*No connection with any other Firm*

Ronald Baldwin, present Chairman of the M.A.D.C., may be leaving Malta within the next few months. For over three years he has been a tower of strength around whom many M.A.D.C. productions have been built. Of a wide variety of leading roles his vivid portrayals at San Anton of two of Shakespeare's most tragic figures, Othello and Shylock, have perhaps been the most outstanding, giving him full scope to use the wide range of voice, emotions and gestures at his command.



M.A.D.C. members are most grateful to Ronald Baldwin for his unstinted efforts both in acting, and in organising their plays, and are sure that you, their audiences, will wish to join with them in thanking him for all his efforts in Malta and in wishing him good fortune and many many more curtain calls in the years to come.

## WITNESS FOR THE PROSECUTION

*Characters, in the Order of Their Appearance*

GRETA, a typist . . . . .	Sheila Hotston
CARTER, chief clerk to Sir Wilfrid . . . . .	Frank Seward
Mr. MAYHEW, a solicitor, . . . . .	Kenneth Hampson
LEONARD VOLE . . . . .	Bob Anderson
Sir WILFRID ROBARTS, Q.C. . . . .	Ronald Baldwin
Inspector HEARNE . . . . .	Alex Finch
ROMAINE . . . . .	Maureen Cheyney
Clerk of the Court . . . . .	John McAllister
Mr. JUSTICE WAINWRIGHT . . . . .	Ben Sandham
Mr. MYERS, Q.C., prosecuting . . . . .	Harry Brierley
Court Usher . . . . .	Denis Carver
Court Stenographer . . . . .	Joseph Debono
Warder . . . . .	Barney Barnes
Judge's Clerk . . . . .	Ronald Currie
Foreman of the Jury . . . . .	Roy Rayner
Dr. WYATT, a police surgeon . . . . .	Joe O'Gorman
A Policeman . . . . .	Colin Weedon
JANET MACKENZIE . . . . .	Inez Currie or Kathrine Latta
Thomas CLEGG, a laboratory assistant . . . . .	Bruce Wansbury
A Girl . . . . .	Christine Adams
Barristers, Jury, Spectators . . . . .	Peter Wall, Denis Bell, Paul Flack, Maureen Anderson, David Douglas, and other M.A.D.C. Members.

*The Play Produced and Directed*

*by*

MAURICE ADAMS

## ACT I

*The Chambers of Sir Wilfrid Robarts, Q.C. — Afternoon.*

## ACT II

*The Central Criminal Court, London — commonly known as  
the Old Bailey — Six Weeks Later.*

## ACT III

*Scene 1. The Chambers of Sir Wilfrid Robarts —  
The same evening*

*Scene 2. The Old Bailey — Next Morning.*

*(During Act III, Scene 2, the lights are faded to denote the passing of one hour.)*

*The Time — 1953*

---

Stage Managers . . . . .	PETER NEEDHAM and ROBIN LATTA
Scenery built by . . . . .	SALVATORE TESTA & SONS
Scenery painted by . . . . .	DAVID DOUGLAS & CHRISTINE ADAMS
Continuity . . . . .	ZOE ADAMS
Make-up . . . . .	BETTY SANDHAM & THE CAST
Wardrobe . . . . .	MARGARET BALDWIN
Costumes by . . . . .	JESSIE VELLA
Properties . . . . .	FRANCES SEWARD
Box Office for M.A.D.C. . . . .	PAUL FLACK
Box Office for Manoel Theatre . . . . .	MARGARET DEGIORGIO
Head Electrician } Manoel Theatre . . . . .	JOHN LAUS
Head Carpenter } Staff . . . . .	JOSEPH BORG



**Ilbies**

*minn*

**Bernards**

Maghmulin tal-Barathea  
minn nies tas-sengha

Imfasslin u mehjutin ghalik  
bl-idejn, jew lesti minn  
£16. 16s. 0d.

Hallas bin-nifs. 'Tista' thallas bit-tant fix-xahar  
minghajr ma thallas xejn extra permezz ta'

**BANKERS ORDER**

**BERNARDS of HARWICH**

**ORDNANCE STREET, IL-BELT**

**18, THE STRAND, TAS-SLIEMA**

## THE MALTA AMATEUR DRAMATIC CLUB

Founded 1910

*(Affiliated to the National Operatic and Dramatic Association)*

*Patron:* Her Majesty the Queen.

*President:*

His Excellency Sir Maurice Dorman, G.C.M.G., G.C.V.O.,  
Governor of Malta.

*Vice-Presidents:*

The Honourable Dr. G. Borg Olivier, LL.D.,  
Prime Minister of Malta.

Admiral Sir Deric Holland-Martin, K.C.B., D.S.O., D.S.C.,  
Commander-in-Chief, Mediterranean.

Air Vice-Marshal D.C. McKinley, C.B.E., D.F.C., A.F.C.,  
Air Officer Commanding, Malta.

Major General The Lord Thurlow, C.B.E., D.S.O.,  
General Officer Commanding, Malta and Libya.

*Chairman of Committee:*

Mr. A.R.J. Baldwin.

*Committee:*

Commander D.L. Bell, R.N.V.R. (Ret:)

Commander A.D. Carver, O.B.E., R.N.

First Officer M. Cheyney, W.R.N.S.

Lieut. Commander A. Finch, R.N., (Hon. Treasurer).

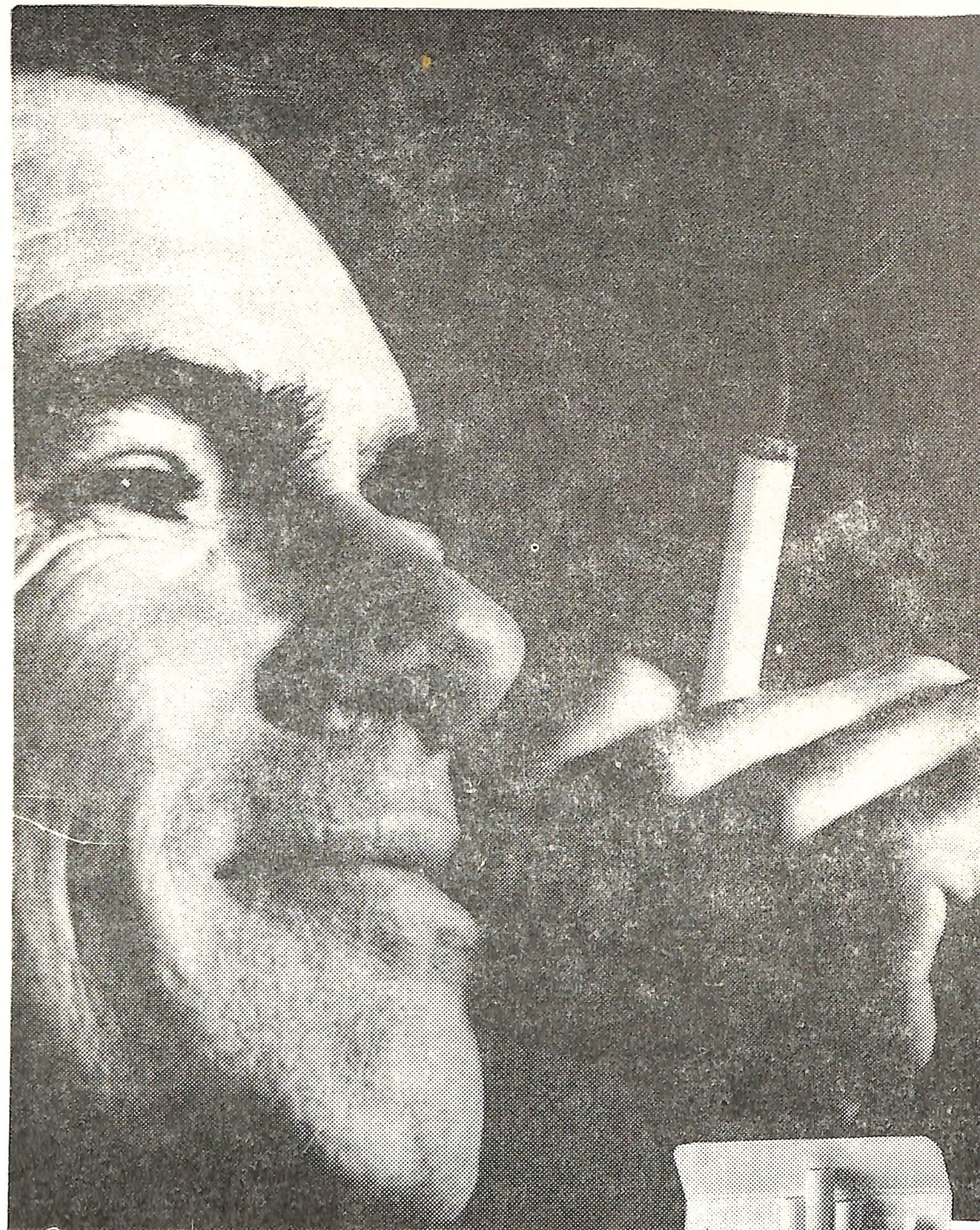
Mrs Attard Montalto.

Mr. B.R. Sandham.

Mr. Frank Seward.

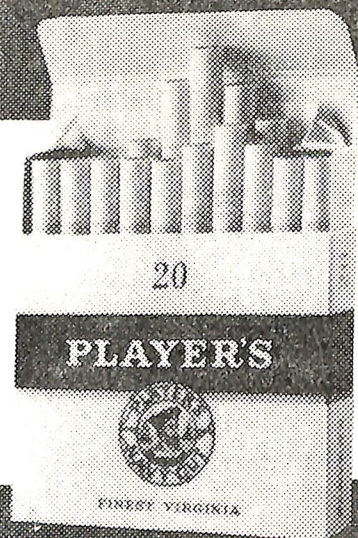
Miss E. Warren, M.B.E., (Hon. Secretary).

Club Headquarters:  
Santa Venera,  
Hamrun.



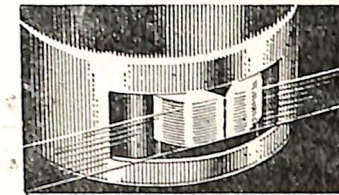
When you've time to think of the pleasure a cigarette gives you, that's when you realise that of all cigarettes only Player's please so much.

**Only PLAYER'S please so much**

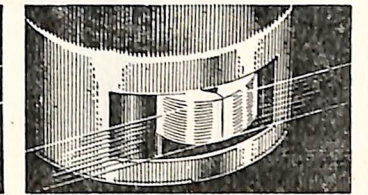


FOR PERFECT  
RECORDING  
USE  
"SCOTCH"

**COMPARE!**



Picture of a recorder head's contact surface, with critical centre gap eroded and enlarged by the wearing action of conventional magnetic tape.



Same type head, same period of use. But see how silicone lubricated "SCOTCH" Brand Magnetic Tape has saved the head from wear—assuring perfect response!

Read how **SCOTCH** tape's built-in dry lubrication looks after your recorder

The most vulnerable part of your recorder is the sensitive magnetic head—the tiny, precision-made part where the lack of proper lubrication can cause annoying wow, flutter and harmful friction.

Compare the two magnetic heads magnified above. See for yourself what lack of proper lubrication can do. Like the heads in your recorder, each head is made with an almost invisible "quarter-thou" gap over which tape passes. At left, abrasive action by conventional tape has worn down the head enough

to cause a frequency drop of a full octave. Now, look how "SCOTCH" Brand Magnetic Tape has saved the head on the right. No wear... so no loss of sound.

"SCOTCH" Brand Magnetic Tapes exclusive silicone dry lubrication process lets tape glide smoothly, safely over the magnetic heads. It is built in during manufacture and, therefore, this famous safety feature lasts the life of the tape. Ask your dealer for our booklet on tape tips.

**Only SCOTCH tapes have silicone lubrication**



111 True Economy



311 Extra Strength



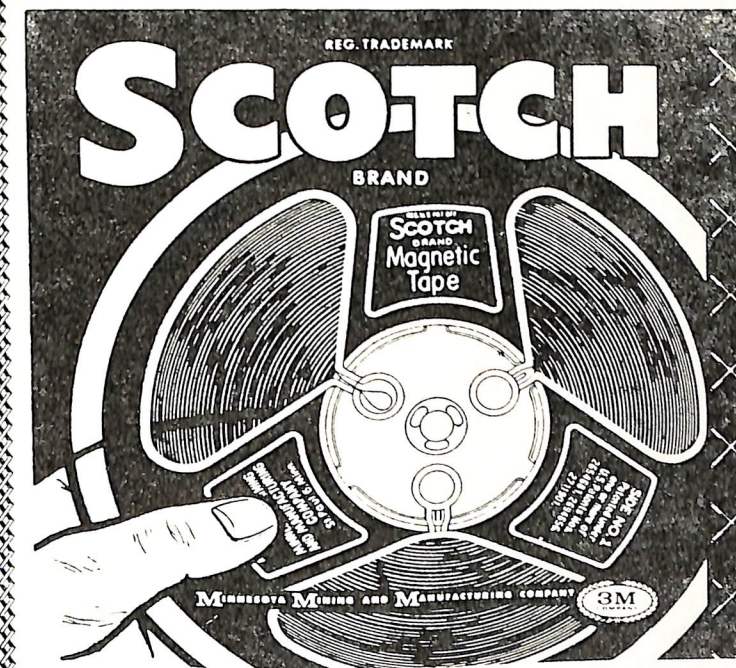
150 50% Extra Playing Time



200 Double Playing Time



are suitable for all makes of recorder



Sole Distributors:

**NANI**

8-27 South Street,  
VALLETTA.

81, Tower Road,  
SLIEMA.

**MARTELL'S** FAMOUS COGNAC BRANDIES  
 ESTABLISHED 1715

★★★

**CORDON BLEU**  
 (OVER 35 YEARS OLD)  
 A VERY FINE LIQUEUR BRANDY

TOURING FLASK

**A BRANDY FOR EVERY OCCASION**

ALWAYS IN STOCK

Represented by:

**ALBERT V. MALLIA LTD.**

BP BP BP BP BP BP BP

BP  
BP  
BP  
BP  
BP  
BP

A NEW OIL, SO GOOD  
 YOU CAN **DOUBLE**  
 YOUR DISTANCE  
 BETWEEN OIL  
 CHANGES



ANOTHER



EXCLUSIVITY

BP  
BP  
BP  
BP  
BP  
BP

BP

BP BP BP BP BP BP BP



