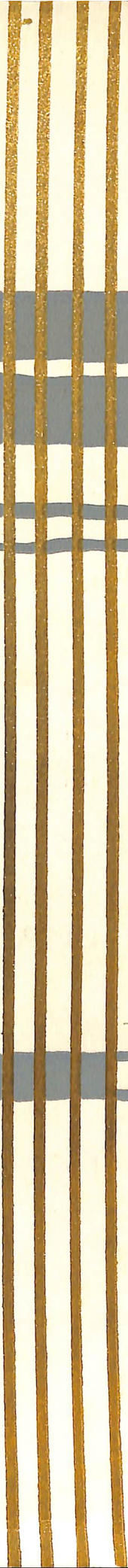


1964



1732 1960

*Alvise & Maria  
Ricciardi  
Grafica  
Richardson*



Manoel  
Theatre

CREMONA

82

THE BRITISH COUNCIL

PRESENTS

ALAN RICHARDSON

AND

JANET CRAXTON

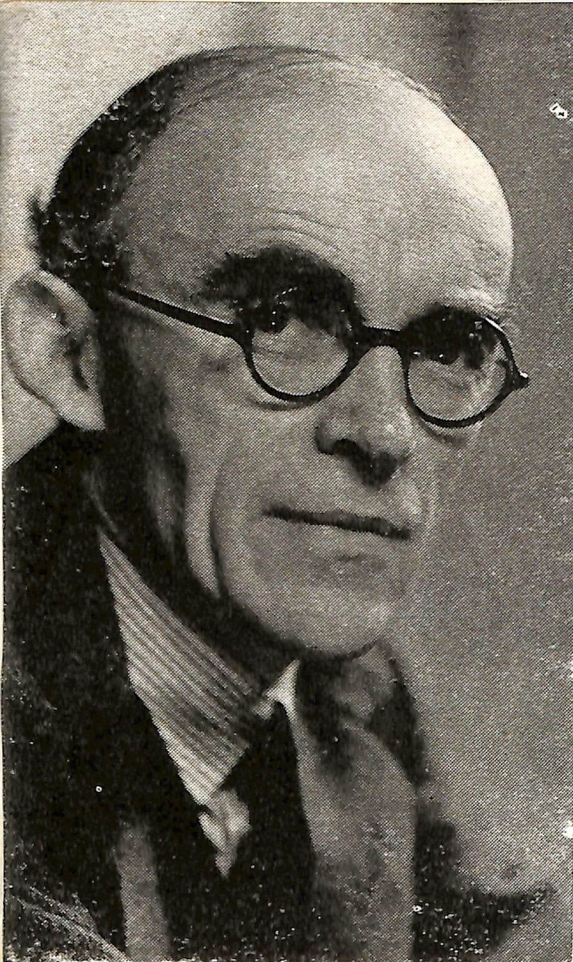
IN

AN OBOE AND PIANO RECITAL

AT THE

MANOEL THEATRE

SATURDAY, 4th JANUARY 1964



# PROGRAMME

1. Partita in B flat (in seven short movements) ... .. TELEMANN
2. Piano solos: Intermezzo in A major }  
Rhapsody in G minor } ... .. BRAHMS
3. Sonata for Oboe and Piano (1962) ... .. FRANCIS POULENC

## INTERVAL

4. Six Metamorphoses after Ovid, for Oboe alone ... .. BRITTEN  
(Pan, Phaeton, Niobe, Bacchus, Narcissus, Arethusa)
5. Piano Solos: Two Preludes ... .. RACHMANINOFF  
Two Fairy Tales ... .. MEDTNER
6. Lyric Suite for Oboe and Piano ... .. ALAN RICHARDSON  
(Lyric, Canzonetta, Lament, Capriccio).



### ALAN RICHARDSON

Born and educated in Edinburgh. Assistant pianist in the Edinburgh B.B.C. Studio, 1926-28. Settled later in London, studying privately with Harold Craxton and subsequently at the Royal Academy of Music. Toured Australia and New Zealand, 1931. Added chamber-music and accompanying to his activities. Started composing at the age of 30 and has now published over 100 instrumental works. War service — whole-time Civil Defence in London. Played his own works at the Edinburgh International Festival, 1949. Has broadcast in many capacities over 2,000 times, including television appearances. Mainly known as a Composer-Pianist. Fellow and Professor at the R.A.M., London; festival adjudicator, examiner and lecturer.

### JANET CRAXTON

Born in London, 1929, daughter of Harold Craxton the celebrated teacher and accompanist, studied the oboe at the Royal Academy of Music with Helen Gaskell (a pupil of Leon Goossens) and later at the Paris Conservatoire with Pierre Bajeux. Joined the Halle Orchestra as principal oboe in 1949, after three years left to become principal oboe in the London Mozart Players and to free-lance. Was appointed principal oboe in the B.B.C. Symphony Orchestra in 1954 which position she leaves in 1963 to devote more time to recitals and solo work in general. Fellow and Professor of the Royal Academy of Music, London. Married Alan Richardson in 1961.

# MANOEL THEATRE MANAGEMENT COMMITTEE

Colonel G. C. GATT — *Chairman.*

Notary Dr. V.M. PELLEGRINI, LL.D. — *Hon. Treasurer.*

Mr. A. AGIUS FERRANTE, L.P. — *Hon. Secretary.*

Mrs. INES BONELLO CASHA — *Member.*

Mr. MICHAEL KISSAUN — *Manager.*

**IF** you are a THEATRE LOVER;

**IF** you wish to help in preserving this National Monument;

**IF** you wish to encourage local talent in the pursuit of  
all theatrical arts.

join

## THE MANOEL THEATRE CLUB

### FORTHCOMING EVENTS

'LE THEATRE D'ART DU BALLET' internationally famous Paris Group in a Ballet Festival  
— From Tuesday 7th to Sunday 12th January, 1964.

M.D.L. — Ghal Hemda tal-Gholjiet — Saturday 18th and Sunday 19th January, 1964.

BRITISH COUNCIL — Symphony Concert — Saturday 25th January, 1964.

MALETH — "Il-Hames Targa" — February 1st and 2nd.

M.A.D.C. — "And so to Bed" — February 5th to 8th.

*Smoking is not permitted in the Auditorium, in Boxes, and in the Gallery.*

The Management reserve to themselves the right to vary or omit any part of the programme without previous notice.

*Partons are reminded that taking of photographs during the performance is not allowed.*

Late comers will not be admitted to the Auditorium.

Children even when accompanied by their parents, will be required to occupy a seat.

