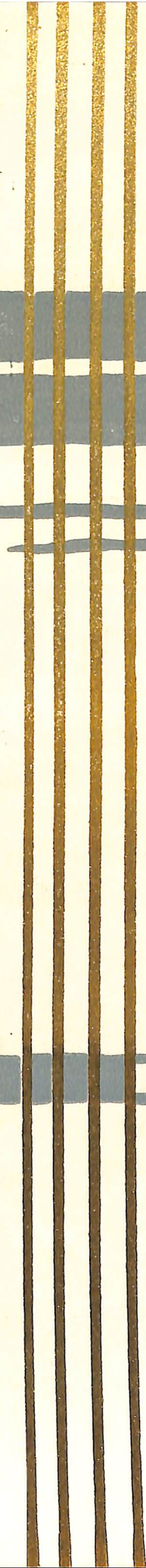


*Check  
S'Art Du  
Ballon*

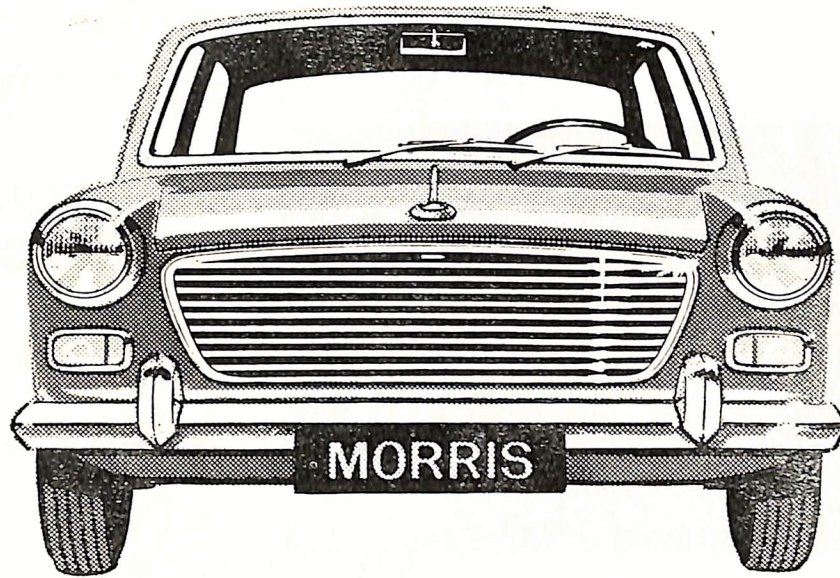


1732 1960



Manoel  
Theatre

CARMONA



# No ordinary car

The Morris 1100 is more than just a new name. It is a new car—genuinely and dynamically new. New and progressive both in concept and engineering. New and years ahead of any other car in the world, in its suspension and performance, roominess and value. *Come and drive it.* We promise it will be a revelation.

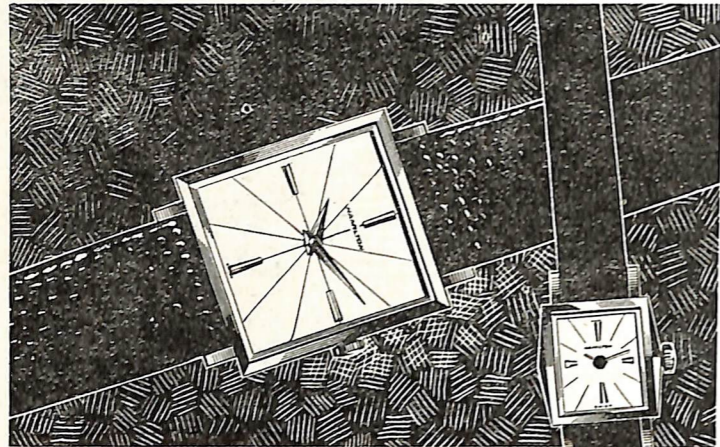


Available with left or right-hand drive. Warranted for 12 Months/12,000 miles and backed by B.M.C.—affording comprehensive service facilities all over the world.



## QUALITY FIRST **MORRIS 1100**

MIZZI BROS., MSIDA — Dial 31061/31062



IF A  
HAMILTON WATCH  
COULD SPEAK...

it would proudly tell you  
how carefully,  
how expertly it was made.

The finest Swiss watchmakers created it as  
a model of precision and elegance.

Your jeweler can read a watch like an open  
book. Ask him about Hamilton quality — he  
knows it is the best.

For lasting value and fairest price, choose  
Hamilton. You could not make a wiser de-  
cision for all the hours of a lifetime.



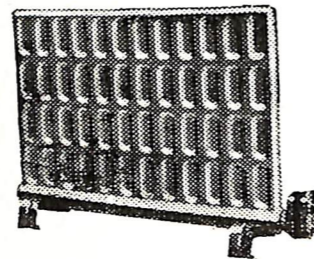
Agents: E. J. PACE BROS. & Co. — SLIEMA.

Sliema Sub Agent TIARA JEWELLERY — 43, TOWER ROAD, SLIEMA

BE WARM THIS WINTER  
WITH

**dimplex**

HEATING APPLIANCES



From:

**GASAN ENTERPRISES LTD.**

Showroom:

ST. ANNE SQUARE — FLORIANA.

Telephone: Central 22073

THE MANOEL THEATRE  
MANAGEMENT COMMITTEE

*presents*

"Le Theatre d'Art du Ballet"

Tatiana Piancova

Artistic Director and Ballet Mistress

Nicolas Kopeikine

Musical Director and Conductor

*Leading Dancers*

ANNA GALINA (EVELYN COURNAND)  
FRANCOISE NEF — HENRYKA STANKIEWICZ — JANE BLAUTH  
BOGDEN BULDER — ROY TOBIAS

*Pianist*  
GENEVIEVE AUDRAS

*Company Manager*  
MARTHA LIGETI

*Wardrobe Mistress*  
MARIE NORMAND

*Stage Director*  
HECTOR BIANCIOTTI

*a Paul Szilard Production*

AT THE

MANOEL THEATRE

7th to 12th JANUARY, 1964.



**ANNA GALINA**

## *Foreword*

The opening of the Manoel Theatre on Tuesday, 27th December 1960 with the Ballet Rambert's exquisite performance of "Coppelia" by Saint Leon and Delibes was indeed a memorable occasion, as never before, in Malta there has been a performance of a full length Ballet. The success was heartening indeed and the Management of the Manoel Theatre made it a point to include in its repertoire at least one Ballet every year.

For two successive years the London Ballet with Rassine, Paula Hinton and Walter Gore graced the Manoel Theatre boards with more recent creations, and even the most modern ones, among which, "Eaters of Darkness" and "The Magical Being" were enthusiastically accepted. Such a confirmation by the Public's appreciation of the Management's endeavours to bring the Ballet World to our audiences, inspired the Management to explore new fields, and so, for this season we are presenting a French Ballet of international repute to follow the former two English Companies.

"Le Theatre d'Art du Ballet" comes to Malta after an extensive tour which includes — India, Japan, Hong Kong, the Philippines, Greece, Turkey, Lebanon and other Middle Eastern countries. In 1960 the Company gave sixty performances in Germany and another tour extended their successes to South America and the United States, winning everywhere an enthusiastic response.



A SPECIAL OFFER FOR FIVE  
BOOKS BY

V.M. PELLEGRINI

1. La Predestinata
2. L'Imprevisto
3. Sulla Sovranità di Malta
4. Spirituale Convegno
5. L'Araldo di Cristo

FOR ONLY 15s.

Obtainable from

106, Archbishop Street, Valletta.  
(Dial 28028)

IN TRUE TO LIFE COLOUR USE

# GEVACOLOR



**GEVAERT**  
FILM

Agents:

**ATTARD & CO.**  
67, SOUTH STREET — VALLETTA

"Le Theatre d'Art du Ballet" was born in the same Parisian atmosphere in which Fokine had developed his tradition of grace, beauty, elegance and musical expressiveness from which his ballets evolved.

Because there was no company in existence to fulfill the demand for an ensemble trained in the ideals of lyric theatre and as now continued by Massine, Dollar and a few other contemporary choreographers, Mme. Tatiana Piankova, with her stellar pupil Anna Galina as the leading dancer, and with the special permission of Vitale Fokine, son of the great choreographer, prepared six ballets for a Fokine Festival. With carefully selected dancers, arduously disciplined, and spiced with the added inspiration of having enticed Nathalie Gontcharova, creator of sets and costumes for Diaghilev's most brilliant successes, a company was created and had its first appearance in Monte Carlo.

The repertoire includes ballets by Michel Fokine and new, specially commissioned ballets by Janine Charrat, Leonide Massine, William Dollar and others; with decor and costumes by Raoul Pene du Bois, Nathalie Gontcharova, S. Lepri and other designers.

Heading the company is Anna Galina, who has been called "one of the foremost interpreters of ballet in the romantic tradition". Although the company was established on the principles of training each dancer as a soloist, without the so-called "star system," Anna Galina was singled out for her "splendid technique and delicate sensitivity."

A company which merits such captions as "Grace, souplesse et harmonie au premier rendez-vous du "Theatre d'Art du Ballet" (Le Jour — Beyrouth). "Le Theatre d'Art du Ballet" est une jeune compagnie qui se reclame, par-dessus tout, de la Grande Tradition du ballet académique (Le Progres Egyptien — Cairo). "Excellent Work done by Young Company" (Tom Ribardy of "The Sacramento Union"). "French Ballet Troupe had style, power, grace" (Marge Crumbaker of the Houston Press) et coetera cannot but "sparkle" as the American press reporters agree, and it is therefore hoped that the Maltese audience will also concur.

V.M. PELLEGRINI



World's largest selling  
King Size Virginia Cigarette



## LES SYLPHIDES

*Music by Chopin.*

*Decor and Costumes by N. Gontcharova.*

<i>Nocturne</i> . . . . .	CORPS de BALLE
<i>Waltz</i> . . . . .	VERONICA ESTERHUIZEN
<i>Mazurka</i> . . . . .	FRANCOISE NEF
<i>Mazurka</i> . . . . .	BOGDAN BULDER
<i>Prelude</i> . . . . .	ANNA GALINA
<i>Waltz (pas de deux)</i> . . . . .	ANNA GALINA BOGDAN BULDER

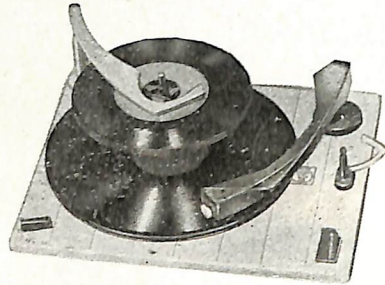
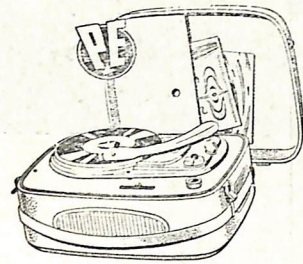
SPARKLING WALTZ: The Whole Company.

A romantic reverie in the form of a tableau, by Michel Fokine.



**Perpetuum-Ebner**

*Highest German achievement  
in Record-Players*



**NANI**

8 South Street, Valletta.

81 Tower Road, Sliema.



FOR SALE

OR

FOR HIRE



For your  
baby...

You can trust **OSTERMILK**  
... made with all the experience of Glaxo Laboratories,



*If you want a really first-class ball-point pen*

**NORTH-RITE '195'**

*should be your ideal choice*

*The only ballpen with a written*

**"LIFE GUARANTEE"**

*Complete with the new "Super-Tank" Refill*

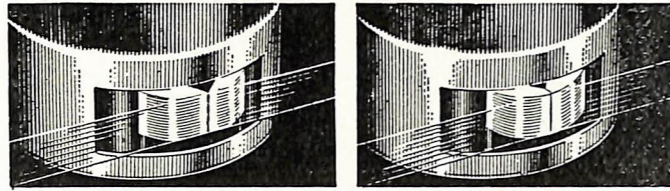
*Guaranteed to write for one full year*

GIOV. MUSCAT & CO. LTD.

48 Merchants Street, Valletta — Phone: 25729.

# 'SCOTCH TAPES' FOR PERFECT RECORDINGS

**COMPARE!** Most competitive Prices



Picture of a recorder head's contact surface, with critical centre gap eroded and enlarged by the wearing action of conventional magnetic tape.

Same type head, same period of use. But see how silicone lubricated "SCOTCH" Brand Magnetic Tape has saved the head from wear—assuring perfect response!

Read how **SCOTCH** tape's built-in dry lubrication looks after your recorder

The most vulnerable part of your recorder is the sensitive magnetic head—the tiny, precision-made part where the lack of proper lubrication can cause annoying wow, flutter and harmful friction.

to cause a frequency drop of a full octave. Now, look how "SCOTCH" Brand Magnetic Tape has saved the head on the right. No wear... so no loss of sound.

Compare the two magnetic heads magnified above. See for yourself what lack of proper lubrication can do. Like the heads in your recorder, each head is made with an almost invisible "quarter-thou" gap over which tape passes. At left, abrasive action by conventional tape has worn down the head enough

"SCOTCH" Brand Magnetic Tapes exclusive silicone dry lubrication process lets tape glide smoothly, safely over the magnetic heads. It is built in during manufacture and, therefore, its famous safety feature lasts the life of the tape. Ask your dealer for our booklet on tape tips.

Only **SCOTCH** tapes have silicone lubrication



111 True Economy    311 Extra Strength    150 50% Extra Playing Time    200 Double Playing Time    are suitable for all makes of recorder

# NANI

8-27, South Street,  
VALLETTA.

81, Tower Road,  
SLIEMA.

**DELICIOUS!**

Honey gold crisp  
in rich milk  
chocolate



Trade Enquiries:—

SPITERI MALLIA & SONS, 14/12 Strait Street, Valletta — Phone: 25806

# CARNAVAL

Music by Robert Schumann

Choreography by Michel Fokine.

Decors and Costumes based on those by Léon Bakst.

- |                     |                |
|---------------------|----------------|
| Colombine . . . . . | ANNA GALINA    |
| Chiarina . . . . .  | JANE BLAUTH    |
| Estrella . . . . .  | JANY STORA     |
| Papillon . . . . .  | FRANCOISE NEF  |
| Arlequin . . . . .  | ROY TOBIAS     |
| Pierrot . . . . .   | HIROFUMI INOUE |
| Eusebius . . . . .  | BOGDAN BULDER  |
| Pantalon . . . . .  | DRAGO PANIAN   |
| Florestan . . . . . | JORGE SIQUEIRA |

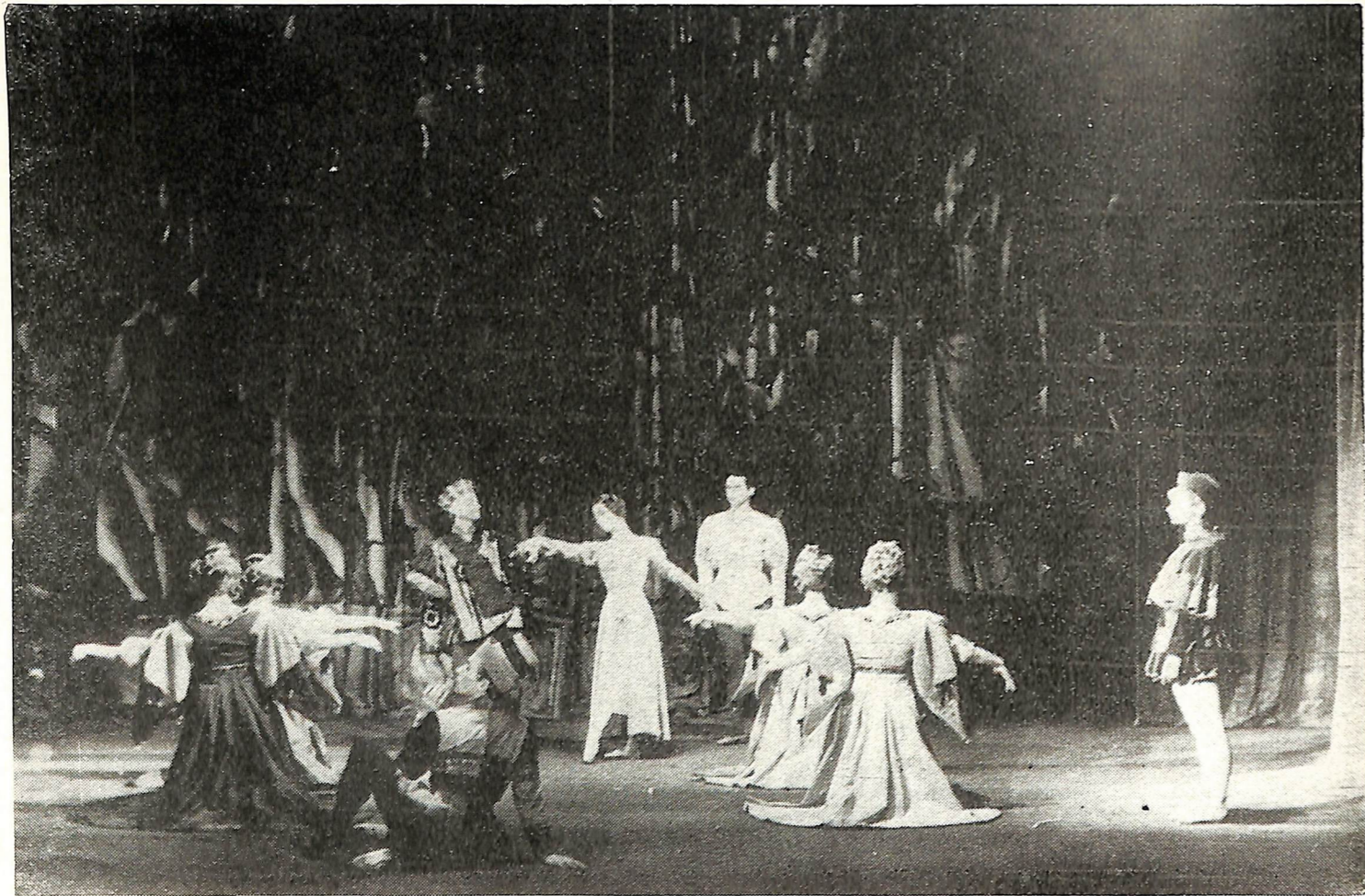
This ballet was created by M. Fokine in Paris in 1910.

Like les SYLPHIDES, CARNAVAL forms a study of romanticism.

But, whereas the former is the expression of a nostalgic rêverie, the latter is an evocation of joy and light intrigues in the tradition of the Victorian era.

We see Pierrot deceived by the unstable Papillon, Pantalon duped, the romantic Eusebius, Florestan the impetuous, the tender Chiarina and the turbulent Estrella and, of course, the joyful Arlequin and witty Colombine.





To facilitate YOUR banking requirements

bank with

**THE NATIONAL BANK OF MALTA**

and

**SCICLUNAS BANK**

(BANKERS SINCE 1809)

BRANCHES IN ALL PARTS OF THE ISLAND



## TRILOGY

*Music by Rachmaninoff (Piano Concerto No. 2 in C Minor, Opus 18)*

*Choreography by Edward Caton.*

*Costumes and Scenery by Mayo.*

ANNA GALINA

BOGDAN BULDER

FRANCOISE NEF

HENRYKA STANKIEWICZ

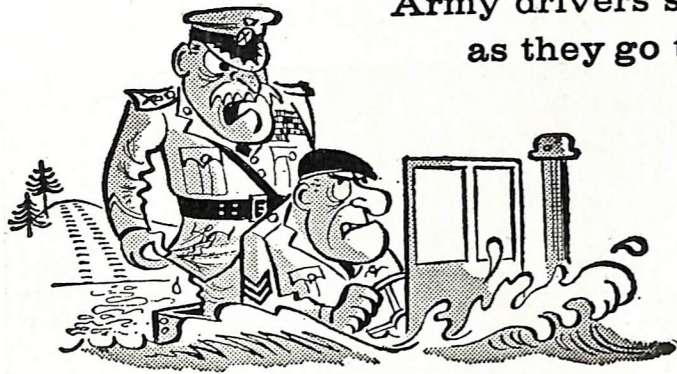
JORGE SIQUEIRA

HIROFUMI INOUE

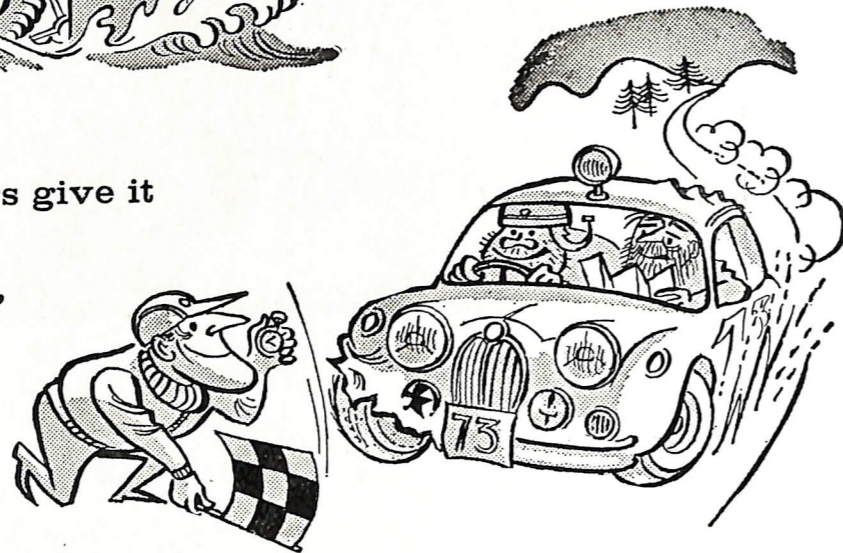
and the Corps de Ballet

This ballet was created for the Theatre d'Art du Ballet by Edward Caton in Paris. In the choreographer's own words it is an Ode to Nature.

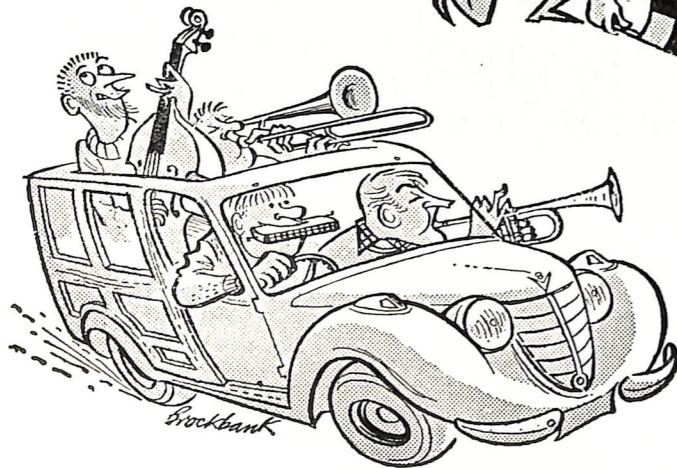
Army drivers say it,  
as they go through thick and thin,



Rally-drivers give it  
as the reason why  
they win,



Jazz-band leaders sing it  
when the Saints  
come marching in—



The Es - so sign means hap - py mo - tor - ing Call at the Es - so sign ...for



**EXTRA**

FINEST PETROL YOU CAN BUY

**ASCOT WATER HEATERS!**

INSTANTANEOUS STEAMING  
HOT BATHS

S  
T  
Y  
L  
I  
S  
H



S  
T  
R  
O  
N  
G

**SAFE**

THE ASCOT BRINGS YOU THE  
BLESSING OF INSTANT ENDLESS  
HOT WATER IN THE KITCHEN  
AND BATHROOM.

FOR USE ON MAINS OR  
BOTTLED GAS.

**NO WORK!  
NO WAITING!  
NO WASTE!**

YOU WILL FIND THE ASCOT  
OF YOUR CHOICE AT

**FORESTALS LTD.**

46, ZACHARY STREET,  
VALLETTA.

Tel. 25728.

**FREE!** Have you  
had your  
copy of  
"ENGINEERING  
OPPORTUNITIES"

Now available—without charge—to all who want a worthwhile post in Engineering. Frank, informative, completely up-to-date, "ENGINEERING OPPORTUNITIES" is a "must" for everyone interested in any branch of the Engineering industry, irrespective of age, experience or training.

**We Guarantee "NO PASS—NO FEE"**

Details of exams and courses in every branch of Engineering, Electronics, Building etc., openings available and requirements for quick promotion, the advantages of our Appointments Dept. etc. It tells how, in the comfort of your home, you get guaranteed technical training to prepare you rapidly for the position you want in the work you like best.

Post coupon for your copy today—FREE.

**156  
pages**

**WHICH IS YOUR PET SUBJECT ?**

- |   |   |
|---|---|
| MECH. ENGINEERING<br>Gen. Mech. Eng.—Main-<br>tenance—Diesel Eng.—<br>Press Tool Design—Sheet<br>Metal Work—Welding—<br>Inspection — Draughts-<br>manship— Metallurgy—<br>Production Engineering. | AUTO. ENGINEERING<br>Gen. Auto. Eng.—Main-<br>tenance & Repair—Diesel<br>Maintenance — Auto.<br>Electrical Equipment—<br>Garage Management.   |
| ELEC. ENGINEERING<br>General Electrical Eng.<br>—Installation—Draughts-<br>manship — Illuminating<br>Eng. — Refrigeration —<br>Elec. Supply—Electrical<br>Instruments.                            | RADIO ENGINEERING<br>General Radio—Radio<br>& TV Servicing—TV<br>Eng. — Telecommuni-<br>cations—Electronics—Auto-<br>mation—Practical Radio.  |
| CIVIL ENGINEERING<br>General Civil Eng.—<br>Municipal Eng.—Struct-<br>ural Eng.—Sanitary<br>Eng. — Hydraulics —<br>Mining—Water Supply<br>—Petroleum Technology.                                  | BUILDING<br>General Building—Heat-<br>ing & Ventilating —<br>Plumbing — Architecture<br>— Carpentry — Painting<br>& Decorating—Specifi-<br>cations & Quantities—<br>Surveying — Architec-<br>tural Draughtsmanship. |

Which qualification would increase your earning power?  
A.M.I.C.E., A.M.I.MUN.E., A.M.I.MECH.E., A.M.I.PROD.E.,  
A.M.I.CHEM.E., A.M.BRIT.I.R.E., A.M.I.M.I., A.M.I.E.D.,  
A.R.I.B.A., A.R.I.C.S., A.I.Q.S., A.I.O.B., M.R.S.H., B.Sc.  
(Eng.), CITY and GUILDS.

GENERAL CERTIFICATE OF EDUCATION ETC.

**POST THIS COUPON TODAY**

Please send me a FREE copy of "ENGINEERING  
OPPORTUNITIES". I am interested in: (state  
subject, exam, or career)

NAME \_\_\_\_\_  
ADDRESS \_\_\_\_\_

**BRITISH INSTITUTE OF  
ENGINEERING TECHNOLOGY**  
222, Merchants Street, Valletta.

**B.I.E.T.—THE GREATEST NAME IN POSTAL TUITION**

MODERN SCIENCE BRINGS YOU A COMPLETELY **NEW** TOOTHPASTE-



**NEW PEPSODENT** FRESHENS YOUR MOUTH WITH ITS BRACING FLAVOUR!

**NEW PEPSODENT**

**lights  
up your  
smile**

with teeth shining white!

**NEW! NEW!**

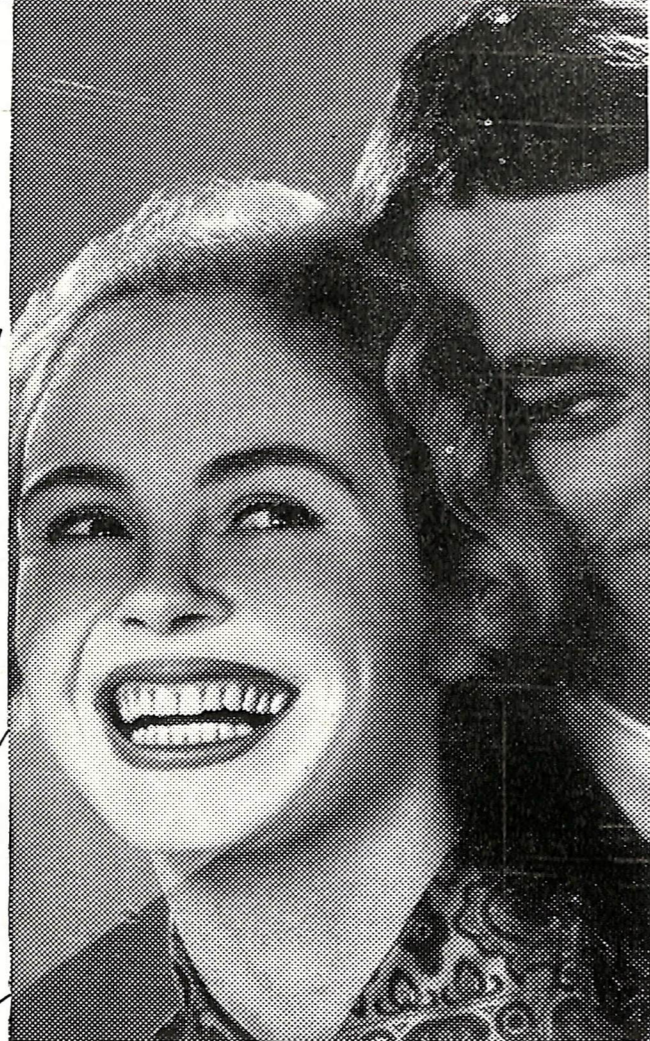
Softer cream gives faster-forming foam, and more of it. Bracing PEPPERMINT FLAVOUR gives you a fresh clean mouth, sweeter breath.

**NEW!**

ACTIVE POLISHING AGENT adds brilliance to your teeth, sparkle to your smile.

**NEW!**

IRIUM PLUS cleans your teeth as never before!



**Light up your smile  
with NEW Pepsodent**

**SEE** how creamy-smooth, how much softer New Pepsodent is.

**FEEL** the faster-forming foam swirl into every tiny crevice.

That fresh clean feel, those shining white teeth are proof you're using today's toothpaste!

And remember, Pepsodent make the finest toothbrushes too.

## MANOEL THEATRE MANAGEMENT COMMITTEE

Colonel G. C. GATT — *Chairman.*

Notary Dr. V.M. PELLEGRINI, LL.D. — *Hon. Treasurer.*

Mr. A. AGIUS FERRANTE, L.P. — *Hon. Secretary.*

Mrs. INES BONELLO CASHA — *Member.*

Mr. MICHAEL KISSAUN — *Manager.*

**IF** you are a THEATRE LOVER;

**IF** you wish to help in preserving this National Monument;

**IF** you wish to encourage local talent in the pursuit of all theatrical arts.

join

## THE MANOEL THEATRE CLUB

### FORTHCOMING EVENTS

M.D.L. — Għal Hemda tal-Gholjiet — Saturday 18th and Sunday 19th January, 1964.

BRITISH COUNCIL — Symphony Concert — Saturday 25th January, 1964.

MALETH — "Il-Hames Targa" — February 1st and 2nd.

M.A.D.C. — "And so to Bed" — February 5th to 8th.

Late comers will not be admitted to the Auditorium.

Smoking is not permitted in the Auditorium, in Boxes, and in the Gallery.

The Management reserve to themselves the right to vary or omit any part of the programme without previous notice.

Patrons are reminded that taking of photographs during the performance is not allowed.

Children even when accompanied by their parents, will be required to occupy a seat.

The compilation, layout and editing of this programme was carried out by Dr. V.M. Pellegrini, LL.D.; the cover is by Prof. Em. Vin Cremona. The printing by Giov. Muscat & Co. Ltd. Valletta, Malta.

# HENNESSY

MAINTAIN THE LARGEST STOCK OF

## COGNAC BRANDY

IN THE WORLD

### FILMS – BLACK & WHITE

DEVELOPED AND PRINTED —

*NEXT DAY SERVICE*

### FILMS – COLOURED

DEVELOPED AND PRINTED BY

THE RANK TEMPO, ORGANIZATION, LONDON

*FIFTEEN DAYS SERVICE*

## ABC STATIONERS & PRINTERS

5, South Street,  
Valletta

201, Old Bakery Street,  
Valletta  
Phone 25014

