

M.A.D.C.
Charley's
Album



1732 1960



Manoel Theatre

ENSTONA

Patron: HER MAJESTY THE QUEEN



M.A.D.C.

presents

A Play in Three Acts

CHARLEY'S AUNT

by

BRANDON THOMAS

AT THE

MANOEL THEATRE

VALLETTA — MALTA

WEDNESDAY, 16th DECEMBER, 1964, at 8.30 p.m.

THURSDAY, 17th DECEMBER, at 7.30 p.m.

FRIDAY, 18th DECEMBER, at 7.30 p.m.

SATURDAY, 19th DECEMBER, at 8.30 p.m.

SUNDAY, 20th DECEMBER, at 5.30 p.m.

Charley's Aunt does not wear perfume,
not even French Perfume, but She must
be the only Lady we know who doesn't.
This is understandable because in Malta,
at the Rosina Depares Perfume Boutique
French Perfume is cheaper than Paris.
Why don't you see for yourself?

ABOUT CHARLEY'S AUNT

On 21st December, 1892 at the Royalty Theatre W.S. Penley burst upon the theatrical world in the role of a little old lady and took London by storm. At a time when long runs were rare, Charley's Aunt had an original run of four years. Since then it has come to be accepted as a classic piece of British theatre. Brandon Thomas, the author, who played Colonel Sir Francis Chesney in the original production, called it "a play in three acts". It is doubtful if any modern author would so describe it, for it is really a farce.

Its simple plot and box and cox action lends it a wide appeal and it is undoubtedly this which makes it as popular with children as with their parents and had led to the play being mostly seen during the accepted pantomime season. It was certainly because the M.A.D.C. believes that the children of Malta will enjoy it that Charley's Aunt was chosen as the Club's Christmas production.

ABOUT THE CAST

The majority of the cast have appeared in previous M.A.D.C. productions and many of the audience will know their names. However, few will know what they do in Malta.

Ben Sandham (Stephen Spettigue) is the Deputy Superintendent of H.M. Victualling Yard. Very much an all-rounder in the theatre — producer, actor, artist, and stage-manager — he prefers musical plays and he will be remembered as the producer of 'And So To Bed' and 'Lock Up Your Daughters'.

Commander Nicolas Mules, D.S.C. (Colonel Sir Francis Chesney), a newcomer to the M.A.D.C., is the Queen's Harbourmaster.

Peter Wall (Jack Chesney) is a Leading Sick Berth Attendant (Dental) in the Naval Headquarters at Lascaris. During the past two seasons he has appeared in many of the club's productions.

Captain Patrick Simpson (Charley Wykham) is the Adjutant of Fortress Squadron R.E. It is unfortunate that his duties have prevented from taking a more active part in the M.A.D.C. He will do anything in the theatre and is equally at home in the part of a watchman, a constable or in the type of light comedy which he plays in Charley's Aunt.

Inst. Commander Harry Brierly, the Fleet Education Officer, (Lord Fancourt Babberley) hardly needs any introduction. He has been seen in a variety of roles during the past two seasons. Few will forget his performance as Samuel Pepys in 'And So To Bed'. Unfortunately this will be the last play in which he will appear as he returns to the U.K. early in the new year. We shall be very sorry to lose him and wish him and his family the best of good fortune in his new appointment.

Peter Davies (Brasset) has appeared only once previously for the M.A.D.C., as Faithful in 'Lock Up Your Daughters'. He is a Chief Petty Officer (Radio Electrical Artificer) at the R.N. Air Station, Hal Far. A man of many parts, writer, broadcaster and stage manager, he will tackle anything to do with amateur drama. His wife, herself an accomplished actress, is the prompter — we hope you do not hear her.

Second Officer Jean Valentine, W.R.N.S. is the Officer in Charge W.R.N.S. at R.N.A.S. In the part of Dona Lucia d'Alxadorez she tackles a very different role from her blousy Fan in 'The Light of Heart' and raucous Mrs. Squeezum in 'Lock Up Your Daughters'.

Margaret Marks (Amy Spettigue) is the wife of Lt. Danny Marks, R.N., an Engineer Officer in the Naval Base. Those who saw her in 'Lock Up Your Daughters' will not be surprised to learn that operetta and musical comedy are her favourite roles. This is her first straight role for the M.A.D.C.

Felicity Tullis (Kitty Verdun) is married to Lt. George Tullis, R.N., Flag Lieutenant to Flag Officer Flotillas, Mediterranean. It is almost a year now since Felicity was last seen in 'Hay Fever'. Unfortunately she will be returning to England shortly.

Jane Franklin (Ela Delahay) is the wife of the Fleet Naval Constructor Officer, Constructor Commander Cyril Franklin. Equally at home on the stage and tennis court and a keen artist, she was last seen as Mrs. Pepys in 'And So To Bed'.

Commander Bruce Wansbury, is the Supply Officer of the R.N. Air Station, Hal Far. An old member of the M.A.D.C., he first appeared in an M.A.D.C. production in 1950 and as he is at present on his third tour of duty in Malta he has acted and produced for the club on many occasions since then.

CHARLEY'S AUNT

C A S T

JACK CHESNEY	} Undergraduates at St. Olde's College Oxford <i>Peter Wall</i>
CHARLES WYKEHAM <i>Patrick Simpson</i>
Lord FANCOURT BABBERLEY <i>Harry Brierley</i>
BRASSETT, a College Scout <i>Peter Davies</i>
Col. Sir FRANCIS CHESNEY, Bt., (Late Indian Service) <i>Hank Mules</i>
KITTY VERDUN, Spettigue's Ward <i>Felicity Tullis</i>
AMY SPETTIGUE, Spettigue's Niece <i>Margaret Marks</i>
STEPHEN SPETTIGUE, Solicitor <i>Ben Sandham</i>
Donna LUCIA D'ALVADOREZ, from Brazil <i>Jean Valentine</i>
ELA DELAHAY, an orphan <i>Jane Franklin</i>

Commemoration Week, Oxford 1892.

The Play Produced
by
BRUCE WANSBURY

SYNOPSIS OF SCENES

ACT I

Jack Chesney's Rooms in College (Morning).
"When pious frauds . . . are dispensations" — *Hudibras.*

ACT II

Garden outside Jack Chesney's Rooms (Afternoon).
"While there's tea there's hope" — *Pinero.*

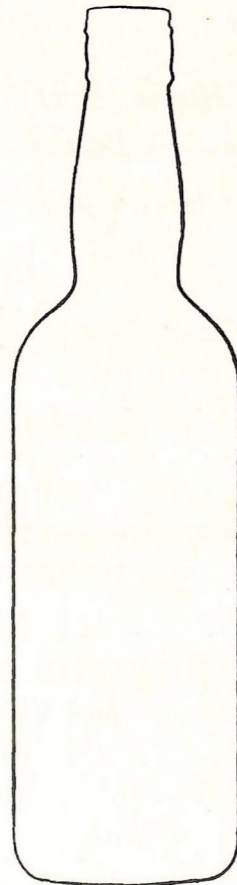
ACT III

Drawing room at Spettigue's House (Evening).
"Dinner lubricates business" — *Boswell.*

There will be an INTERVAL between acts.

Stage Manager	PETER NEEDHAM
Assistant Stage Managers	DANNY MARKS and NEIL BUCKLAND
Wardrobe Mistress	ANNE ROWE
Some costumes made by	JESSIE VELLA
Scenery painted by	VALERIE MARDEN, RUTH SNOW and BETTY SANDHAM
Scenery built by	SALVATORE TESTA and Son
Decor and scenery design	BETTY SANDHAM
Properties	TESSA WILSON, PAT WANSBURY and VIRGINIA CARVER
Wigs by	ROSINA DEPARES
Make-up	BETTY SANDHAM
Prompter	MARY DAVIES
Sound	JOSEPH DEBONO
Electrician and Lighting Effects } Assistant Electrician } Head Carpenter }	Manoel JOHN LAUS Theatre FRANS CILIA Staff JOSEPH BORG
Box Office for Manoel Theatre	ANNE BRINCAT
Box Office Manager for M.A.D.C.	DENIS BELL

**It's good to
drink scotch**



**It's better
to drink
White Horse**

Sole Importers :- Saccone & Speed Ltd.,

THE MALTA AMATEUR DRAMATIC CLUB

Founded 1910

(Affiliated to the National Operatic and Dramatic Association)

Patron: Her Majesty the Queen

President:

His Excellency Sir Maurice Dorman, G.C.M.G., G.C.V.O.,
Her Majesty's Governor-General.

Vice-Presidents:

The Honourable Dr. G. Borg Olivier, LL.D.,
Prime Minister of Malta.

Admiral Sir John G. Hamilton, K.B.E., C.B.,
Commander-in-Chief, Mediterranean.

Air Vice-Marshal D.C. McKinley, C.B.E., D.F.C., A.F.C.,
Air Officer Commanding, Malta.

Major-General J.D. Frost, C.B., D.S.O., M.C.,
General Officer Commanding, Malta and Libya.

Chairman of Committee:
Mr. Frank Seward.

Committee:
Commander D.L. Bell, R.N.V.R. (Ret.).

Mr. Robert Hipkiss, (Hon. Treasurer).

Mrs. Attard Montalto.

Cdr. P.L.K. Needham, D.S.C., R.N.

Mr. B.R. Sandham.

Lt. Col. M.G. Stevens, M.B.E., R.E.

Lt. Cdr. B. Wansbury, R.N.

Miss E. Warren, M.B.E., (Hon. Secretary).

On the granting of Independence to Malta, 21st September 1964, the M.A.D.C. sent a
Loyal Address to Her Majesty the Queen which was graciously accepted.

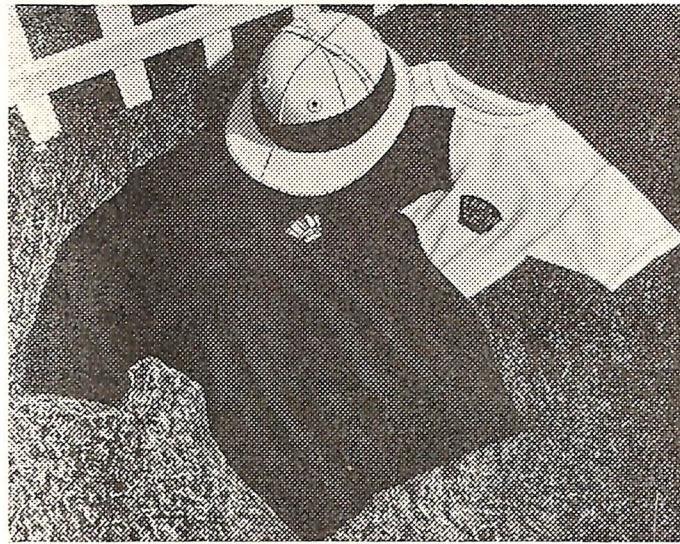
Club Address
2 St. Paul's Street,
Mdina.

Club rooms
Santa Venera
Hamrun.



Gieves

LIMITED



Fine Champagne
LIQUEUR BRANDY

MEDALLION



COGNAC

MARTELL

LARGEST SELLING COGNAC BRANDY IN THE WORLD

YOUR CHRISTMAS ENTERTAINMENT FROM THE MALTA UNITED FILM CORPORATION

Showing at the EMBASSY THEATRE



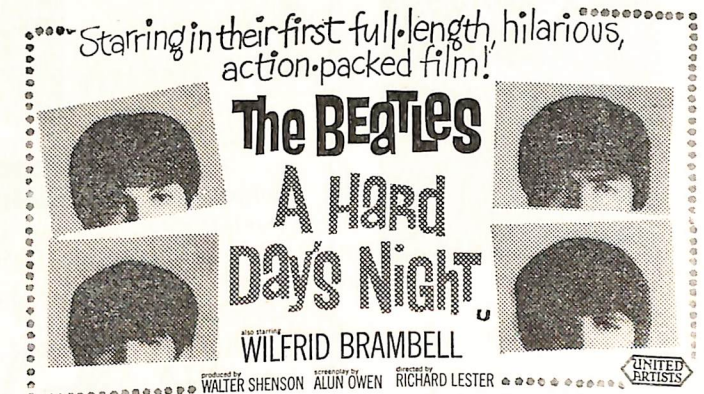
YOU WILL BE
TICKLED TO
DEATH WHEN
YOU SEE NORMAN
WISDOM IN
"A STITCH IN TIME"

CHILDREN ARE ADMITTED

PREVIEW ON CHRISTMAS EVE AT 8.45 p.m. —
THEN FROM CHRISTMAS DAY ONWARDS

Showing at the UPPER SAVOY

YEAH
YEAH
YEAH
IT'S A HIT —
ALEX WALKER
Evening Standard



CHILDREN ARE ADMITTED

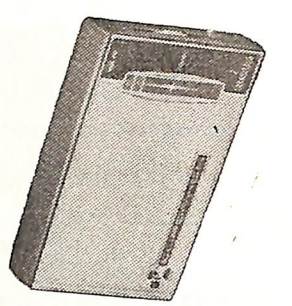
PREVIEW ON CHRISTMAS EVE AT 8.45 p.m. —
THEN FROM EASTER SUNDAY ONWARDS

THE MALTA UNITED FILM CORPORATION
WISH ALL CINEMAGOERS A HAPPY CHRISTMAS

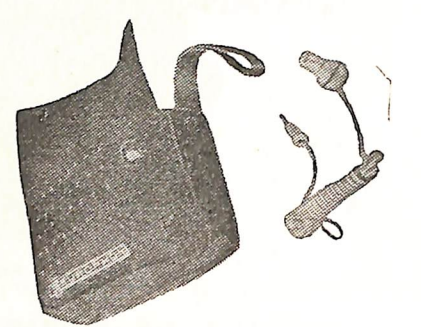


SCOTCH
TAPES

TRANSISTOR
POCKET RADIOS



TV



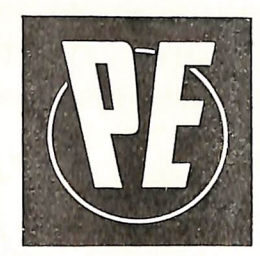
NANI 8 South Street, Valletta.
81 Tower Road, Sliema.



FOR SALE

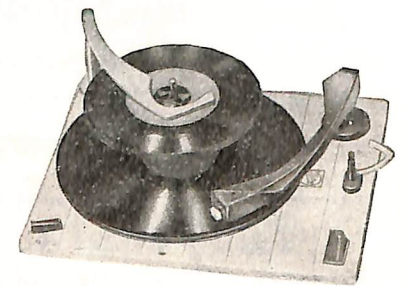
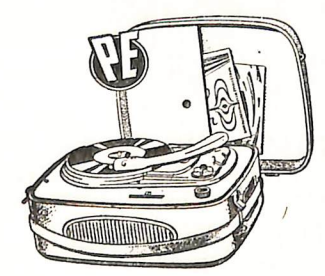
OR

FOR HIRE



Perpetuum-Ebner

*Highest German achievement
in Record - Players*



NANI 8 South Street, Valletta.
81 Tower Road, Sliema.

MANOEL THEATRE MANAGEMENT COMMITTEE

Colonel G. C. GATT — *Chairman.*

Notary Dr. V.M. PELLEGRINI, LL.D. — *Hon. Treasurer.*

Mr. A. AGIUS FERRANTE, L.P. — *Hon. Secretary.*

Mrs. INES BONELLO CASHA — *Member.*

Mr. MICHAEL KISSAUN — *Manager.*

- IF you are a THEATRE LOVER;
- IF you wish to help in preserving this National Monument;
- IF you wish to encourage local talent in the pursuit of all theatrical arts.

join

THE MANOEL THEATRE CLUB

FORTHCOMING EVENTS

- MALTA BAND CLUBS ASSOCIATION — Annual Concert, 26th December 1964.
- COMPAGNIA FILODRAMMATICA
- JEROME ROSE — Piano Recital, 19th and 21st January 1965.
- BRITISH COUNCIL — Orchestral Concert, 30th January 1965.
- ALFREDO SPERANZA — Piano Recital, 2nd and 4th February 1965.
- M.A.D.C. — "Ladies in Retirement", 17th to 20th February 1965.
- R.A.D.A. — "Castle" and "Dangerous Corner", Mid-March.
- TEATRO STABILE TRENTO E BOLZANO — Italian Prosa, End-March.

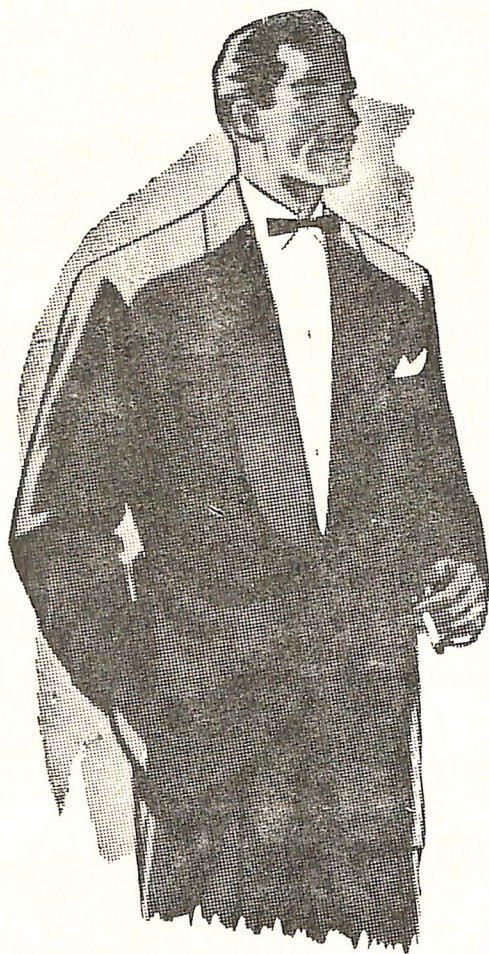
Late comers will not be admitted to the Auditorium.

Smoking is not permitted in the Auditorium, in Boxes, or in the Gallery.

The Management reserve the right to vary or omit any part of the programme without previous notice.

Patrons are reminded that the taking of photographs during the performance is not allowed.

Children even when accompanied by their parents, will be required to occupy individual seats.



Dresswear

by

Bernards

Hand cut and tailored
for you, or read to wear
from £16. 16s. 0d.

Craftsman Tailored in
Fine Barathea

Spread all your clothing costs over a period.
Payment may be made monthly, at no extra cost
by **BANKERS ORDER.**

*FOR ALL YOUR CHRISTMAS GIFTS TOO!
LATEST STYLES AND SHADES IN SHIRTS, TIES, KNITWEAR.
THERE'S HELP IN SELECTION AND ALL THE TIME IN THE
WORLD TO DECIDE*

BERNARDS of HARWICH

Ordnance Str., and 23 South Str., Valleta, — 18 The Strand, Sliema.

