

M.A.P.C.

Tofais and
The Angel.
December
1966.



1732 1960



Manoel
Theatre

GRANDMA
GRANDMA

Dick Cox

*Madelaine S. Howard Hartford
Christine Baigent
Mary Cox*

~~Frank Dale~~

Joseph & Fern

Francis Allen

K. W. S. Kelly

Frank Miles

Beatrix Bennett

Roger Vasey

Janet Holmes

TOBIAS AND THE ANGEL

by JAMES BRIDIE



M. A. D. C.

Patron: Her Majesty the Queen

**AT THE MANOEL THEATRE
VALLETTA**

Thursday 15th December, 1966 at 7.30 p.m.

Friday 16th December at 7.30 p.m.

Saturday 17th December at 3 p.m. and 8.30 p.m.

Sunday 18th December at 6.30 p.m.



CAR RADIOS

PORTABLE RADIOS

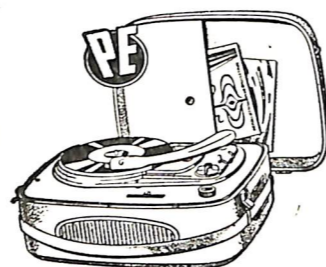
TELEVISION SETS

THE FINEST RECORD PLAYERS EVER

MANUFACTURED IN GERMANY.

RECORD CHANGERS and STEREO ALSO AVAILABLE

NANI 8, SOUTH STREET, VALLETTA.
81, TOWER ROAD, SLIEMA.



**it's a vintage
year for WATER**



Trade Enquiries:

229, ST. PAUL STREET,

VALLETTA.

Dial 24109

fifty-fifty with



TEACHER'S

HIGHLAND CREAM
SCOTCH WHISKY

ABOUT THE PRODUCTION

When we asked Ian Cox, who is producing *Tobias*, what his main feelings and impressions were, he said that above all else, the play is good *drama*. Since James Bridie writes cleverly as a stage craftsman, there is no need for additional 'production' — no need for extra humour in order to obtain laughs from the audience. The play has therefore been produced to bring out the complete sincerity of the characters taking part, and while Ian Cox hastened to add that there certainly *was* humour and warmth in the play, these are integral parts of it, not something added. Both the lightness and the sincerity come across to us in the theatre through the quality of the writing.

The producer's second point was that he found the play interesting to handle because a completely new venture is being undertaken by the M.A.D.C. This is a composite set, with four acting areas of a type not often seen at the Manoel Theatre. *Tobias* has been designed by Betty Cater who sees the composite set, impressionistic rather than realistic, as symbolic of the play itself. Betty Cater has knit together, through her design, a number of elements and has related the colours and flow of her costumes to the shape of the set and the quality of the lighting. In all this she has been working closely with Ian Cox so that both have felt, throughout rehearsals, that each has known what the other is up to.

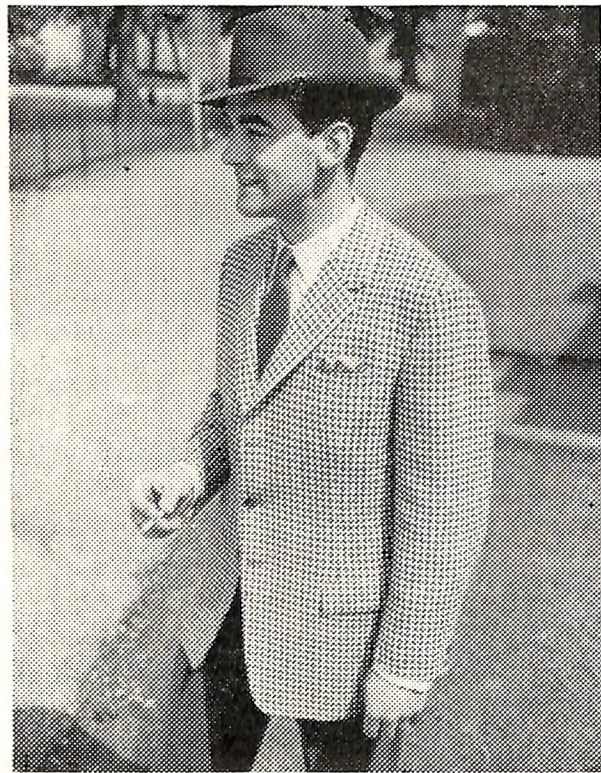
Finally, we asked Ian Cox whether he had found *Tobias* significantly different from any earlier productions he had handled. He said that the play was certainly challenging, containing costume, dancing, and subtle lighting — as well as a large cast — but the most interesting point about it lay in the fact that the audience is actually treated with respect and is invited to exercise its imagination and its intelligence. He added that he found Bridie a splendid playwright; a beautiful writer as well as a fine craftsman.



Gieves

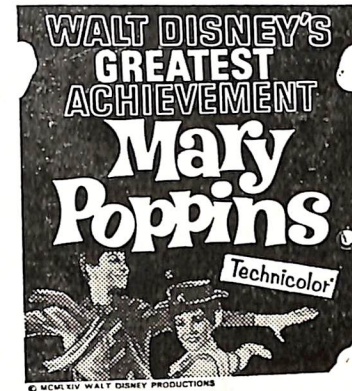
LIMITED

(Incorporated in England)

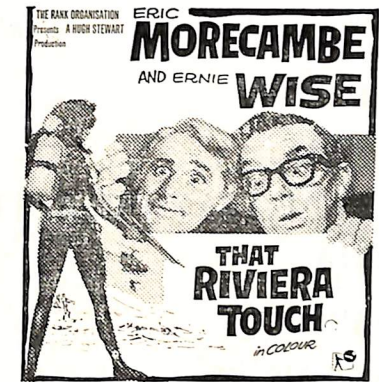


55, OLD BAKERY STREET,
VALLETTA

Telephone: C. 25817



AMBASSADOR
THEATRE



UPPER SAVOY
THEATRE

20th CENTURY-FOX presents

YOUR
CHRISTMAS

Those
Magnificent Men
in their
Flying Machines

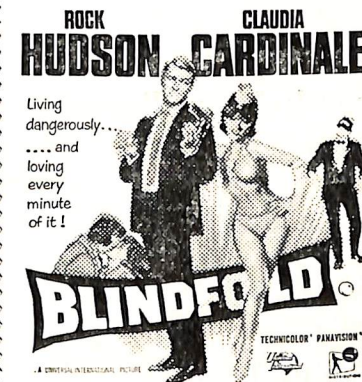
FROM THE
MALTA
UNITED
FILM
CORPORATION
LIMITED

ENTERTAINMENT

...we how I flew from
London to Paris in 25 hours and 11 minutes

PRODUCED IN TODD-AO®
COLOUR BY TECHNICOLOR®
WITH AN ALL STAR
INTERNATIONAL COMEDY CAST!

COLISEUM
THEATRE



EMBASSY
THEATRE



GERONIMO'S
REVENGE
TECHNICOLOR
TOM TRYON
DARRYL HICKMAN · BETTY LYNN
WALT DISNEY PRODUCTIONS

THEATRE
LOWER SAVOY

TOBIAS AND THE ANGEL

Cast in order of appearance

TOBIT	JOSEPH DE PIRO
TOBIAS	CHARLES THAKE
THE ARCHANGEL RAPHAEL	HANK MULES
ANNA	MARY COX
SHERAH	EILA ANNIKKI MULES
SARA	CHRISTINE BAIGENT
AZORAH	MADELEINE ATTARD MONTALTO
RAGUEL	CHARLES IZZO
ASMODAY	JOHN BONNICI MALLIA
A BANDIT	ROGER VASEY
AN ETHIOPIAN SLAVE	JOHN BONNICI MALLIA
ATTENDANTS	PATRICIA NOOT, ELIZABETH CLOTHIER
MUSICIANS	DAVID MASON, STUART ROGERS

The Play produced by

IAN COX

The scene is laid in Mesopotamia and in Northern Persia.
The time is before the reign of Ahasuerus

ACT I

Scene 1 Tobit's hovel in Nineveh

Scene 2 On the banks of the Tigris, a day's march from Nineveh

ACT II

Scenes 1 and 2 Raguel's house in Hamadan

ACT III

Scene 1 A khan near Kifri

Scene 2 A lane on Nineveh, outside Tobit's hovel

There will an interval of fifteen minutes between Acts

STAGE MANAGER	<i>Jo Debono</i>
ASSISTANT STAGE MANAGER	<i>Roger Vasey</i>
STAGE DESIGN, DECOR AND COSTUME	<i>Betty Cater</i>
CHOREOGRAPHY	<i>Tanya Bayona</i>
COSTUMES MADE BY	<i>Vivi Isadni and Nancy Sammut</i>
WARDROBE	<i>Kay Warren</i>
PROPERTIES	<i>Beatrice Dennis</i>
MAKE-UP	<i>Julia Mompalao de Piro</i>
PROMPT	<i>Janet Palmer</i>
LIGHTING	<i>Tom Moore</i>
PUBLICITY	<i>Alan Coleman</i>
BOX OFFICE FOR M.A.D.C.	<i>Charles Izzo</i>
BOX OFFICE FOR THE MANOEL THEATRE	<i>Jane Pisani</i>
HEAD CARPENTER	} <i>Manoel Theatre</i>
HEAD ELECTRICIAN	
ASSISTANTS	<i>F. Mifsud</i>
	<i>E. Dalli</i>

Set built by the Manoel Theatre Staff

Wigs by Nathanwigs Ltd. and Rosina Depares

Beards by Nathanwigs Ltd.

Jewellery by Petra

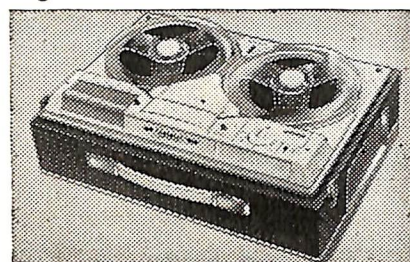


Buy "SCOTCH"

Tapes and Tape Recorders

THEY GIVE YOU THE BEST MUSIC AND
SPEECH REPRODUCTION AT NORMAL
COMPETITIVE PRICES

NANI 8, SOUTH STREET, VALLETTA
81, TOWER ROAD, SLIEMA.



If you want to look your best

Visit

Michael

Hair Stylist

Experts in Cutting, Colouring and Permanent Waving

Phone 25122

201B Old Bakery Street, Valletta.

The First Production of *Tobias and the Angel*

The play was first produced at the Festival Theatre, Cambridge, on 20th November 1930, by Evan John. Flora Robson, who was training to be a singer, appeared for the first time on the professional stage, and was the singer of 'The Jackal Song'. The cast was:

TOBIT
TOBIAS
ANNA
RAPHAEL
BANDIT
SARA
SHERAH
AZORAH
TAMKAH
KISH
NUBIAN SLAVE
RAGUEL
ASMODAY

Waldo Wright
Frederick Piper
Gillian Scaife
Tyrone Guthrie
Philip Hatfield
Marion Anderson
Barbara Nixon
Joan White
Flora Robson
Rupert Doone
Robert Eddison
Roy Malcolm
Pascoe Thornton
Maisie Lambeth
Norah Brown
Isobel Scaife

ATTENDANTS

M.A.D.C. NEWS

We are very sorry that Miss Jessie Vella, who has been making costumes for the Society for a very long time, is indisposed for this production; we look forward very much to seeing her admirable talents once more in full flourish.

The society is always anxious to increase its membership, and would welcome new members whether they wish to appear in front of the footlights, or whether they would be prepared to work backstage. You may choose to be a Full Member, taking part in all club activities, or you may join us as a Booking Member, merely making yourself available of booking privileges. Those interested should get in touch with the Honorary Secretary, 93 Main Street, St. Julians.

The next production will be *Three Sisters* by Anton Chekhov, a play rich in settings, costumes and drama. It will be presented at the Manoel Theatre from 23rd to 26th February 1967.

HAMILTON

WATCH OF PRECISION



Agents:- EMM. PACE & CO. LTD. — 78, St. Mary Street, Sliema — Tel. 34575.

Fine Champagne

LIQUEUR BRANDY

MEDALLION



COGNAC

MARTELL

LARGEST SELLING COGNAC BRANDY IN THE WORLD

THE MALTA AMATEUR DRAMATIC CLUB

(Affiliated to the National Operatic and Dramatic Association)

FOUNDED 1910

Patron: Her Majesty the Queen

PRESIDENT

His Excellency Sir Maurice Dorman, G.C.M.G., G.C.V.O.,
Her Majesty's Governor-General

VICE-PRESIDENTS

The Honourable Dr. G. Borg Olivier, LL.D.,
Prime Minister

Admiral Sir John G. Hamilton, K.B.E., C.B.,
Commander-in-Chief, Mediterranean

Major-General J. D. Frost., C.B., D.S.O., M.C.,
General Officer Commanding, Malta and Libya

CHAIRMAN OF COMMITTEE

Commander N. M. Mules D.S.C., R.N.

COMMITTEE

Mr. R. Allan

Mrs. M. Attard Montalto

Mrs. F. Hay

Mr. C. Izzo (*Hon. Treasurer*)

Lt. D. F. Marks, R.N.

Major J. C. Mompalao de Piro R.M.A. (*Hon. Secretary*)

Mr. P. Parker

Miss E. Warren M.B.E.

BERNARDS of HARWICH

... FOR ALL YOUR CLOTHING
REQUIREMENTS !

- ★ READY TO WEAR OR TAILORED FOR YOU.
- ★ LOUNGE SUITS
- ★ WEATHER COATS
- ★ SPORTS JACKETS
- ★ BLAZERS and TROUSERS
- ★ SCHOOL and SERVICE UNIFORMS

...STYLE RIGHT
PRICE RIGHT

... FOR THAT SPECIAL OCCASION
DURING THE FESTIVE SEASON.

DRESSWEAR

DINNER SUITS IN FINE QUALITY
BARATHEA — READY TO WEAR
£16. 16s. 0d.

GIFTS A WONDERFUL SELECTION OF ACCESSORIES
ASSISTANTS IN SELECTION, COMFORTABLE SURROUNDINGS AND
ALL THE TIME IN THE WORLD TO MAKE YOUR CHOICE

SPREAD YOUR CLOTHING COSTS OVER A NINE MONTH PERIOD
AT NO EXTRA COST. PAYMENT MAY BE MADE MONTHLY BY
BANKERS ORDER.

ORDNANCE STREET, VALLETT

26, SOUTH STREET, VALLETTA — 18, THE STRAND, SLIEMA.



