



L-Università ta' Malta
Faculty for Social Wellbeing

A Study about various themes in Malta

FEBRUARY 2022

Prof. Andrew Azzopardi - Project Manager
Dr. Vincent Marmarà Ph.D.(Stir.) - Sagalytics



L-Università ta' Malta
Faculty for Social Wellbeing



A Study about various themes in Malta

A Study about various themes in Malta

 Sagalytics

Published at Poulton's Ltd - Printers-Offset, Zejtun - Malta



L-Università ta' Malta
Faculty for Social Wellbeing



Peoples' Voices

For the second year running the Faculty has commissioned an Opinion Survey to help give a better understanding, in a scientific empirical way, how people are experiencing their day-to-day encounters with their life challenges. What is fantastic about this initiative is that instead of academics and opinion makers 'dictating and analysing' how people are getting on, it is now citizens themselves who are telling us how life is impacting on them. This data has helped us not only provide fodder for our research but also contributed data that policy makers and politicians can engage with and take action accordingly.

Prof. Andrew Azzopardi

Dean

Faculty for Social Wellbeing



Table of Contents

Section 1: Methodology and Demographics	9
Section 2: Following news on different sources	13
Section 3: Important issues/matters in your life	24
Section 4: Migration	27
Section 4.1 – The effect of migration in Malta	28
Section 4.2 – An African immigrant as the husband/wife of your children	30
Section 4.3 - The effect of migration on the salaries in Malta	32
Section 4.4 – Immigrants living in your area	34
Section 4.5 – Racial discrimination in Malta	36
Section 4.6 – Being a racist	37
Section 5: Crime	41
Section 5.1 – Walking alone at night	42
Section 5.2 – Access to drugs	43
Section 5.3 – Tackling domestic violence in Malta	44
Section 5.4 – Trust in the Police force	46
Section 6: Good governance	49
Section 6.1 – The fight against corruption	50
Section 6.2 – Are you paid enough?	51
Section 6.3 - Are politicians corrupt?	53
Section 6.4 – Are the Unions still representing the interests of the workers?	55
Section 6.5 – Talking to a politician to help you and give you a preferential service	56
Section 7: Life satisfaction	59
Section 7.1 – How satisfied are you with your life in general?	60
Section 7.2 – Satisfaction level for different aspects in your life	62
Section 7.3 – Satisfaction level with the neighbourhood (area) where you live in	73
Section 7.4 – How satisfied are you with your house?	75
Section 7.5 – Do you feel that your neighbours take care of each other?	76
Section 7.6 – Waste management	78
Section 7.7 – Traffic	80
Section 7.8 – The necessity of local councils	82
Section 7.9 – Involving yourself in the activities of the local council	83
Section 7.10 – Noise in your area	84
Section 8: Politics	85
Section 8.1 – Factors you consider when choosing a political party	87
Section 8.2 – What if your preferred party is involved in a corruption scandal?	88
Section 8.3 – The ideal politician	90



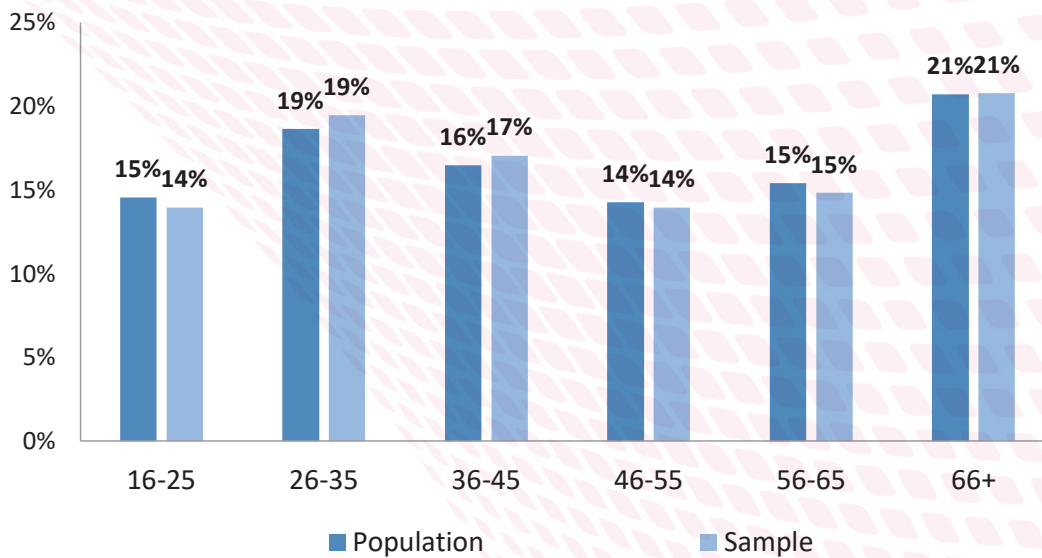


Section 1
Methodology and Demographics

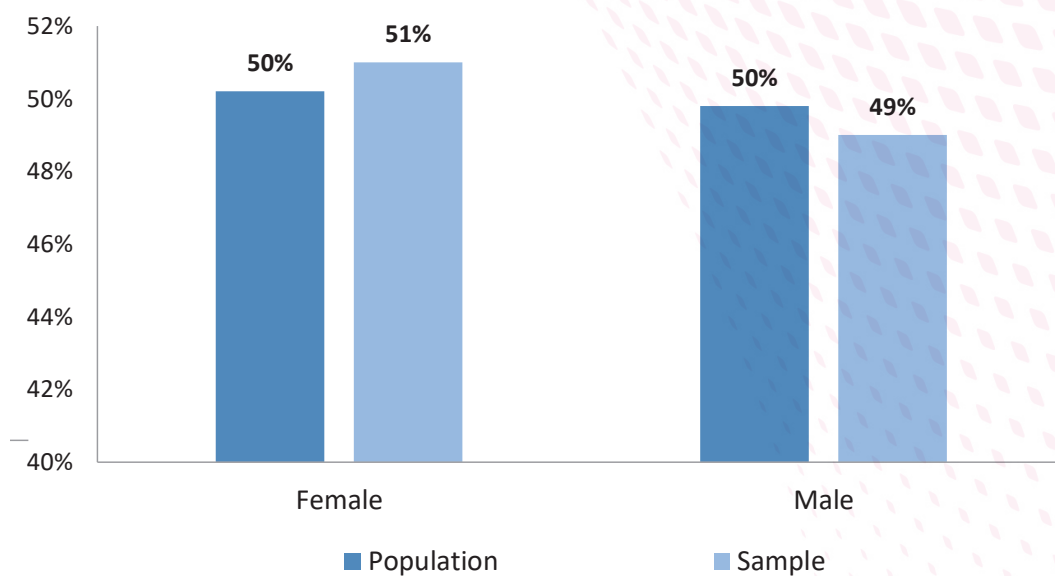


- o The survey was carried out through telephone interviews
- o A sample size of 600 individuals was collected amongst the Maltese population of 16 years and over
- o Level of confidence: 95%
- o Confidence interval: +/- 4%
- o The sample was stratified based on gender, districts and age
- o The data was collected during January 2022.

Age Distribution

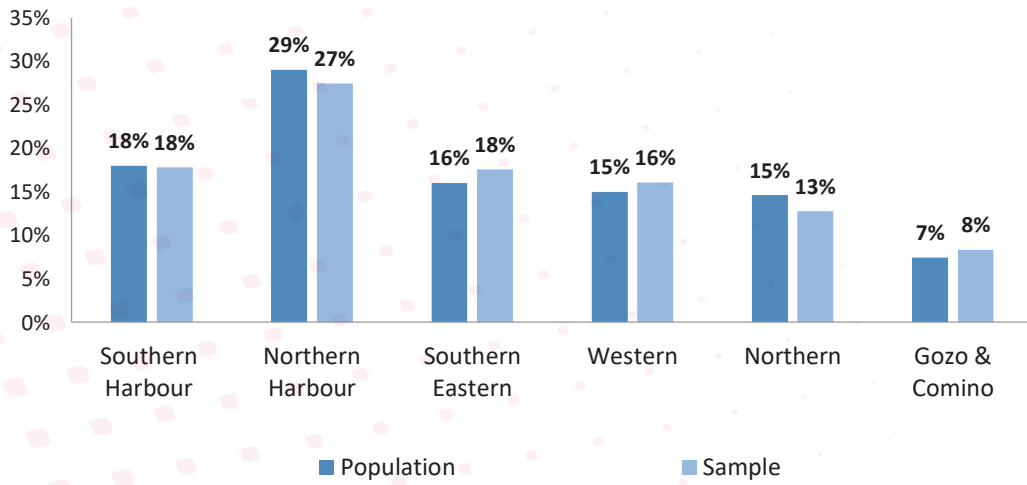


Gender Distribution

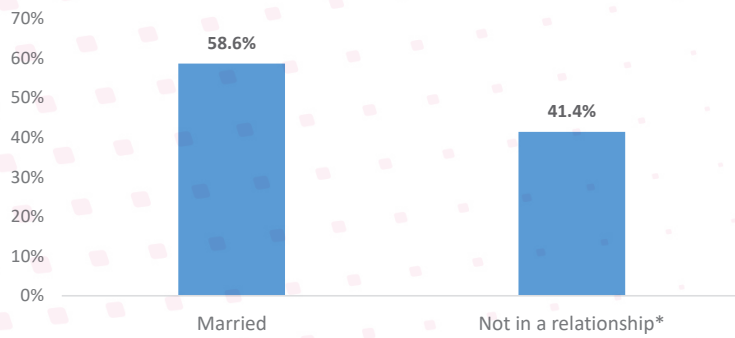


A Study about various themes in Malta

District Distribution

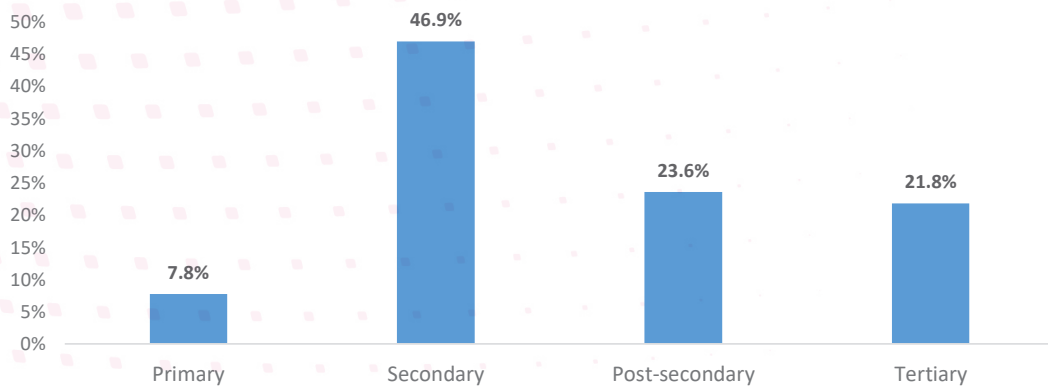


Relationship status distribution



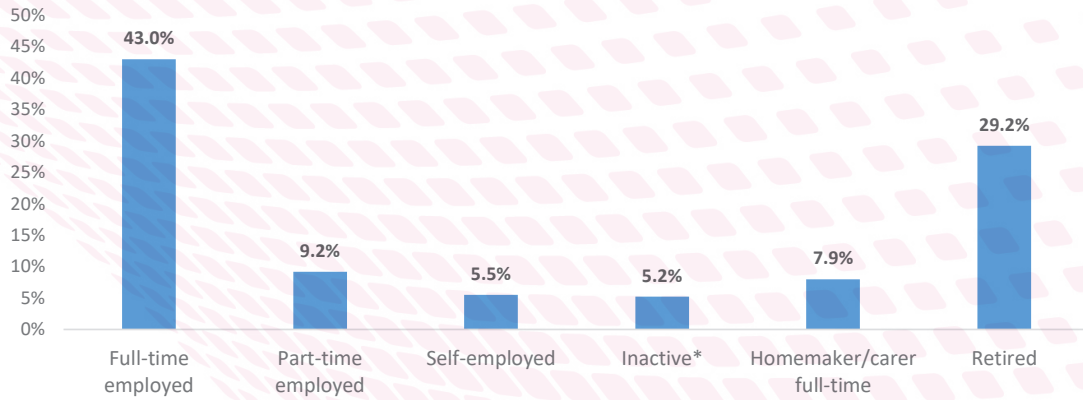
*Widows, separated, divorced, annulled are listed as not in a relationship

Education distribution



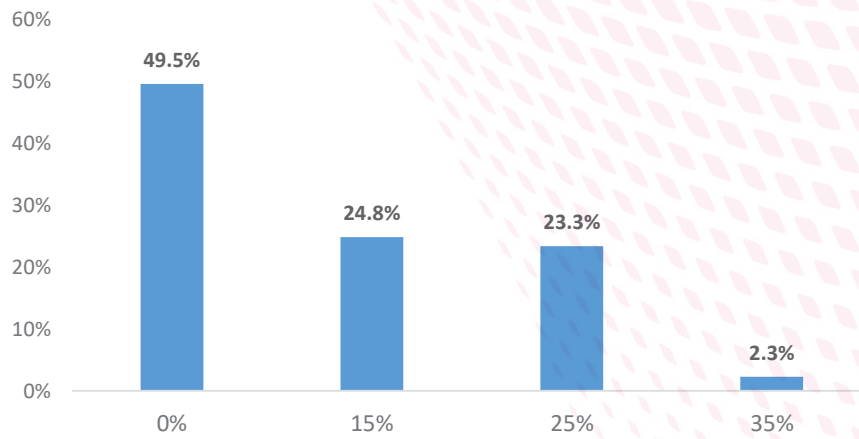


Activity status distribution



*Students and unemployed are listed as inactive

Income tax ditribution





Section 2

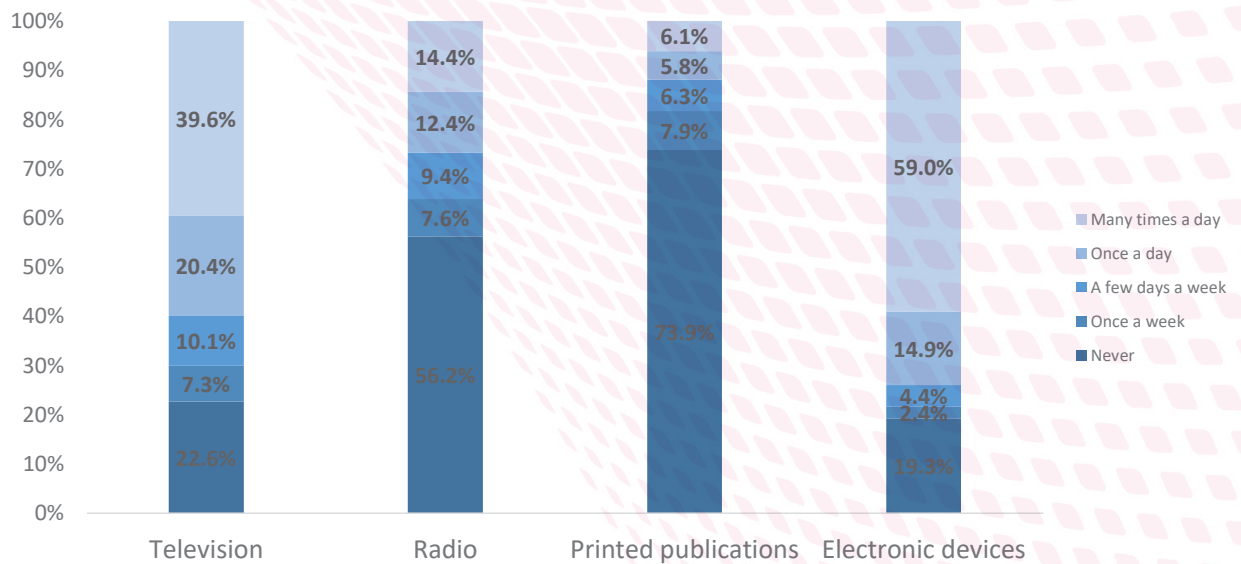
Following news on different sources

RESPONDENTS WERE ASKED HOW MUCH THEY USE THE FOLLOWING FOUR SOURCES TO FOLLOW THE NEWS:

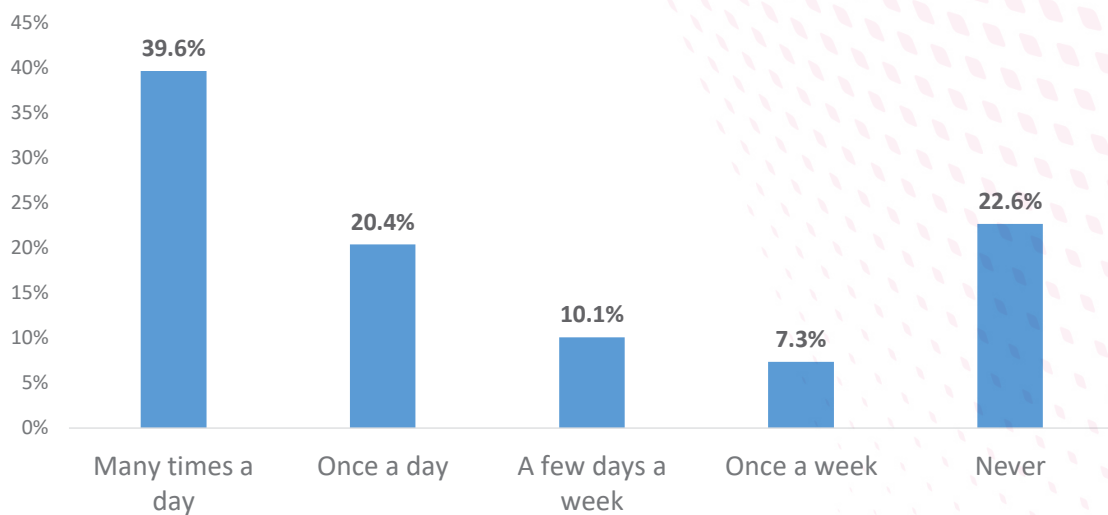
- Television
- Radio
- Printed publications
- Electronic devices
- Electronic devices such as mobiles and tablets are mostly used on a daily basis (59.0% - many times a day). This is followed by television (39.6% - many times a day).
- The least popular sources are printed publications. Almost three-quarters of the respondents said that they never use them.

In the following pages, results by different demographics are presented for each source.

In a typical week, how often do you follow the news from the following:



In a typical week, how often do you follow the news from the following: Television



A Study about various themes in Malta

	Female	Male
Many times a day	40.7%	38.4%
Once a day	22.9%	17.4%
A few days a week	10.2%	9.9%
Once a week	8.2%	6.4%
Never	18.0%	28.0%

	16-25	26-35	36-45	46-55	56-65	66+
Many times a day	29.2%	17.2%	35.1%	39.0%	52.8%	61.0%
Once a day	4.2%	22.4%	22.8%	22.1%	19.5%	27.8%
A few days a week	12.5%	3.4%	19.3%	16.9%	10.6%	3.4%
Once a week	4.2%	17.2%	5.3%	7.8%	5.7%	2.9%
Never	50.0%	39.7%	17.5%	14.3%	11.4%	4.9%

	Married	Not in a relationship
Many times a day	46.7%	29.0%
Once a day	22.2%	17.5%
A few days a week	9.8%	9.9%
Once a week	6.7%	8.6%
Never	14.7%	34.9%

	Primary	Secondary	Post-secondary	Tertiary
Many times a day	57.1%	57.0%	18.9%	19.2%
Once a day	25.7%	20.4%	17.0%	21.8%
A few days a week	5.7%	6.2%	12.3%	14.0%
Once a week	5.7%	5.5%	9.0%	10.9%
Never	5.7%	10.9%	42.9%	34.2%

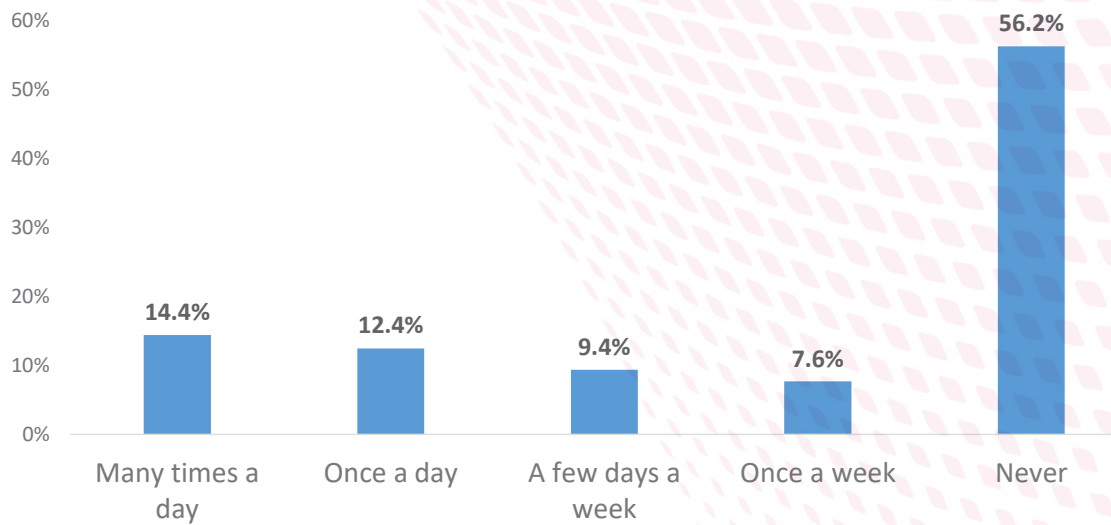
	Full-time employed	Part-time employed	Self-employed	Inactive	Homemaker/carer full-time	Retired
Many times a day	27.4%	57.8%	24.0%	10.6%	38.9%	59.8%
Once a day	17.3%	3.6%	44.0%	17.0%	29.2%	22.7%
A few days a week	15.0%	7.2%	16.0%	0.0%	9.7%	4.9%
Once a week	10.1%	0.0%	10.0%	8.5%	11.1%	4.2%
Never	30.2%	31.3%	6.0%	63.8%	11.1%	8.3%



	0%	15%	25%	35%
Many times a day	56.1%	41.5%	30.1%	0.0%
Once a day	16.6%	13.4%	17.0%	40.0%
A few days a week	3.4%	8.5%	11.1%	13.3%
Once a week	4.0%	2.4%	11.1%	40.0%
Never	19.9%	34.1%	30.7%	6.7%

	Southern Harbour	Northern Harbour	South Eastern	Western	Northern	Gozo and Comino
Many times a day	45.9%	45.0%	40.8%	40.0%	21.2%	22.5%
Once a day	17.5%	24.8%	27.0%	7.7%	23.9%	17.5%
A few days a week	9.8%	7.6%	4.6%	18.7%	9.7%	17.5%
Once a week	4.1%	8.0%	6.3%	6.5%	9.7%	20.0%
Never	22.7%	14.7%	21.3%	27.1%	35.4%	22.5%

In a typical week, how often do you follow the news from the following: Radio



A Study about various themes in Malta

	Female	Male
Many times a day	15.7%	12.8%
Once a day	12.7%	12.1%
A few days a week	8.9%	9.9%
Once a week	7.0%	8.4%
Never	55.6%	56.9%

	16-25	26-35	36-45	46-55	56-65	66+
Many times a day	11.1%	3.7%	11.3%	13.2%	14.2%	27.7%
Once a day	6.7%	9.3%	3.8%	17.1%	16.7%	17.3%
A few days a week	2.2%	3.7%	7.5%	11.8%	16.7%	13.4%
Once a week	4.4%	11.1%	9.4%	6.6%	10.8%	5.0%
Never	75.6%	72.2%	67.9%	51.3%	41.7%	36.6%

	Married	Not in a relationship
Many times a day	17.1%	9.9%
Once a day	16.7%	6.8%
A few days a week	10.4%	8.2%
Once a week	7.1%	8.5%
Never	48.6%	66.8%

	Primary	Secondary	Post-secondary	Tertiary
Many times a day	31.4%	20.1%	5.5%	4.8%
Once a day	15.7%	17.7%	7.0%	4.8%
A few days a week	12.9%	9.2%	6.5%	11.8%
Once a week	8.6%	7.5%	6.5%	9.1%
Never	31.4%	45.4%	74.6%	69.5%

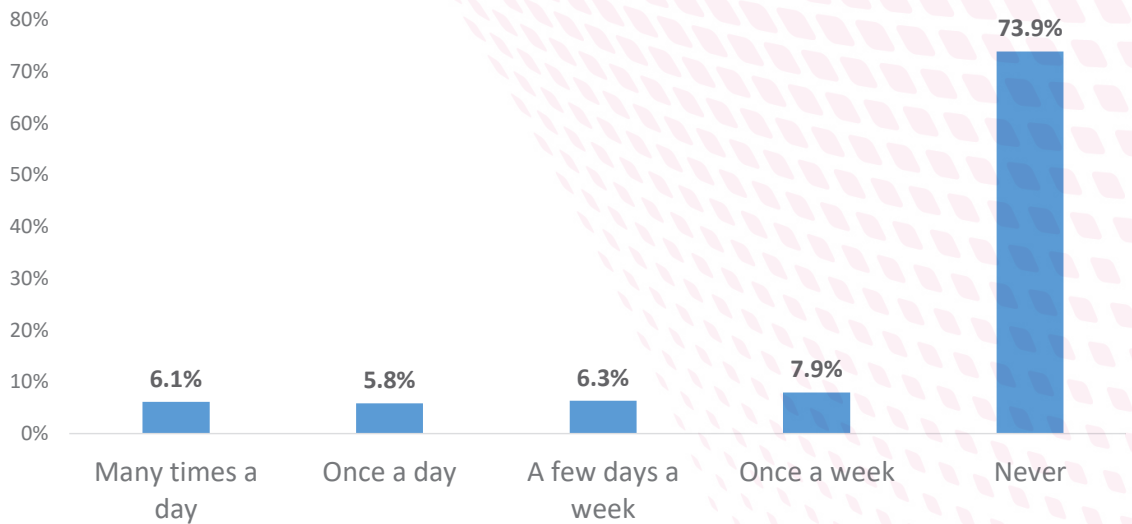
	Full-time employed	Part-time employed	Self-employed	Inactive	Homemaker/carer full-time	Retired
Many times a day	11.5%	6.8%	2.0%	0.0%	8.3%	26.6%
Once a day	8.8%	17.6%	4.0%	17.0%	18.1%	15.4%
A few days a week	8.2%	6.8%	14.0%	4.3%	5.6%	12.4%
Once a week	5.2%	0.0%	50.0%	4.3%	12.5%	4.6%
Never	66.2%	68.9%	30.0%	74.5%	55.6%	40.9%



	0%	15%	25%	35%
Many times a day	24.4%	16.2%	3.3%	0.0%
Once a day	15.7%	14.9%	8.6%	0.0%
A few days a week	7.1%	6.8%	12.5%	13.3%
Once a week	6.1%	5.4%	16.4%	0.0%
Never	46.8%	56.8%	59.2%	86.7%

	Southern Harbour	Northern Harbour	South Eastern	Western	Northern	Gozo and Comino
Many times a day	16.6%	11.7%	13.7%	12.2%	19.1%	17.5%
Once a day	12.3%	16.0%	9.9%	16.2%	5.5%	7.5%
A few days a week	7.0%	10.4%	8.7%	6.8%	12.7%	17.5%
Once a week	11.8%	7.4%	9.3%	2.0%	8.2%	2.5%
Never	52.4%	54.5%	58.4%	62.8%	54.5%	55.0%

In a typical week, how often do you follow the news from the following: Printed publications



A Study about various themes in Malta

	Female	Male
Many times a day	8.1%	3.7%
Once a day	6.6%	4.9%
A few days a week	5.8%	6.9%
Once a week	7.5%	8.4%
Never	71.9%	76.0%

	16-25	26-35	36-45	46-55	56-65	66+
Many times a day	22.2%	3.7%	1.9%	2.6%	5.0%	2.5%
Once a day	4.4%	9.3%	9.4%	3.9%	1.7%	6.1%
A few days a week	4.4%	0.0%	11.3%	7.9%	9.2%	7.1%
Once a week	4.4%	1.9%	11.3%	9.2%	11.7%	10.2%
Never	64.4%	85.2%	66.0%	76.3%	72.5%	74.1%

	Married	Not in a relationship
Many times a day	6.3%	5.9%
Once a day	7.5%	3.7%
A few days a week	6.1%	6.8%
Once a week	10.3%	4.8%
Never	69.7%	78.8%

	Primary	Secondary	Post-secondary	Tertiary
Many times a day	3.0%	8.3%	1.0%	8.0%
Once a day	13.6%	8.3%	0.5%	3.2%
A few days a week	4.5%	7.3%	2.0%	9.6%
Once a week	12.1%	7.5%	7.0%	8.6%
Never	66.7%	68.7%	89.6%	70.6%

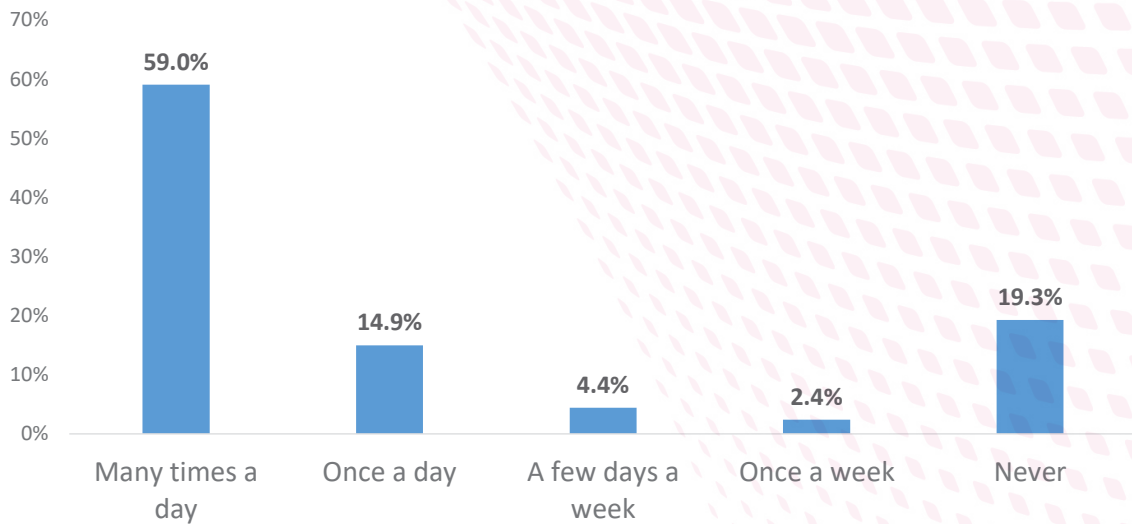
	Full-time employed	Part-time employed	Self-employed	Inactive	Homemaker/carer full-time	Retired
Many times a day	8.8%	12.2%	0.0%	2.1%	1.4%	3.9%
Once a day	3.3%	17.6%	4.0%	12.8%	5.6%	4.7%
A few days a week	4.1%	2.7%	24.0%	0.0%	8.3%	7.9%
Once a week	8.8%	1.4%	14.0%	2.1%	11.1%	7.9%
Never	75.0%	66.2%	58.0%	83.0%	73.6%	75.6%



	0%	15%	25%	35%
Many times a day	11.7%	4.7%	5.9%	0.0%
Once a day	9.4%	3.4%	2.6%	13.3%
A few days a week	8.1%	7.4%	5.3%	0.0%
Once a week	6.5%	2.7%	9.2%	26.7%
Never	64.4%	81.8%	77.0%	60.0%

	Southern Harbour	Northern Harbour	South Eastern	Western	Northern	Gozo and Comino
Many times a day	3.8%	4.8%	7.5%	10.9%	6.4%	0.0%
Once a day	8.7%	7.0%	6.2%	0.7%	5.5%	5.0%
A few days a week	7.6%	9.6%	5.6%	3.4%	3.6%	2.5%
Once a week	7.1%	7.8%	15.5%	4.1%	6.4%	0.0%
Never	72.8%	70.9%	65.2%	81.0%	78.2%	92.5%

In a typical week, how often do you follow the news from the following: Electronic devices



A Study about various themes in Malta

	Female	Male
Many times a day	60.5%	57.3%
Once a day	12.3%	18.0%
A few days a week	4.4%	4.4%
Once a week	2.7%	2.0%
Never	20.1%	18.3%

	16-25	26-35	36-45	46-55	56-65	66+
Many times a day	66.7%	81.5%	67.9%	61.8%	52.5%	32.5%
Once a day	17.8%	16.7%	10.7%	15.8%	16.4%	12.5%
A few days a week	6.7%	0.0%	1.8%	6.6%	1.6%	8.0%
Once a week	0.0%	0.0%	1.8%	3.9%	5.7%	3.0%
Never	8.9%	1.9%	17.9%	11.8%	23.8%	44.0%

	Married	Not in a relationship
Many times a day	52.5%	69.3%
Once a day	14.1%	15.8%
A few days a week	5.9%	1.7%
Once a week	2.5%	2.3%
Never	24.9%	11.0%

	Primary	Secondary	Post-secondary	Tertiary
Many times a day	27.9%	54.5%	66.7%	73.2%
Once a day	7.4%	13.4%	16.9%	18.9%
A few days a week	5.9%	4.3%	5.0%	3.7%
Once a week	8.8%	3.1%	0.5%	0.0%
Never	50.0%	24.6%	10.9%	4.2%

	Full-time employed	Part-time employed	Self-employed	Inactive	Homemaker/carer full-time	Retired
Many times a day	71.2%	67.6%	76.0%	70.2%	69.4%	32.6%
Once a day	14.0%	24.3%	14.0%	12.8%	16.7%	13.6%
A few days a week	4.6%	2.7%	4.0%	0.0%	1.4%	6.2%
Once a week	1.6%	0.0%	0.0%	2.1%	1.4%	4.3%
Never	8.6%	5.4%	6.0%	14.9%	11.1%	43.4%



	0%	15%	25%	35%
Many times a day	52.5%	66.9%	79.7%	86.7%
Once a day	13.3%	17.6%	6.5%	13.3%
A few days a week	5.1%	1.4%	2.6%	0.0%
Once a week	3.8%	2.0%	0.0%	0.0%
Never	25.3%	12.2%	11.1%	0.0%

	Southern Harbour	Northern Harbour	South Eastern	Western	Northern	Gozo and Comino
Many times a day	66.8%	59.9%	50.9%	54.4%	60.7%	62.5%
Once a day	4.3%	12.9%	20.6%	27.2%	17.0%	2.5%
A few days a week	2.1%	5.2%	3.6%	4.8%	8.0%	2.5%
Once a week	4.3%	2.2%	3.6%	0.7%	0.9%	0.0%
Never	22.5%	19.8%	21.2%	12.9%	13.4%	32.5%



Section 3
Important issues/matters in your life

A list of twelve different priorities was presented to the respondents and they had to rank the order of importance. The most important issue is “strengthening of the families”, while the least important issue is “reforms at the correctional facility”.

Which one of these issues is most important to you (in order of importance)?

	Average
Strengthening of families	2.29 - The most important
Control on the cost of living	2.96
Job opportunities	4.61
A cleaner environment	3.75
Better education levels achieved	5.51
Managing and control on the climate change	6.08
Managing migration	7.17
Fight against corruption	7.20
Removed from the Grey list	8.01
Reduction in criminal activities	8.26
Reforms at the correctional facility	9.95 - The least important
Control on planning and construction	8.44

	Female	Male	16-25	26-35	36-45	46-55	56-65	66+
Strengthening of families	2.35	2.23	2.47	2.00	2.29	2.28	2.03	2.59
Control on the cost of living	2.79	3.17	2.49	2.72	3.25	3.02	3.27	3.17
Job opportunities	4.51	4.73	4.42	4.08	4.45	4.63	4.69	5.35
A cleaner environment	3.73	3.77	4.05	3.53	4.74	3.52	3.36	3.50
Better education levels achieved	5.23	5.84	5.80	5.27	5.13	5.13	6.10	5.73
Managing and control on the climate change	6.29	5.84	5.93	5.66	6.91	6.13	6.12	6.01
Managing migration	7.21	7.13	6.67	6.97	7.64	7.19	7.56	7.19
Fight against corruption	7.47	6.91	7.47	7.10	8.04	7.39	7.22	6.35
Removed from the Grey list	8.08	7.93	8.11	8.16	7.74	8.14	8.51	7.57
Reduction in criminal activities	8.37	8.14	8.24	9.34	7.60	8.65	7.78	7.71
Reforms at the correctional facility	10.01	9.88	10.33	10.46	9.58	9.84	9.78	9.59
Control on planning and construction	8.74	8.11	9.33	8.10	8.12	9.15	7.62	8.16

	Not in a Married relationship		Post-Primary Secondary secondary Tertiary			
Strengthening of families	2.11	2.55	3.48	2.20	2.16	2.39
Control on the cost of living	3.05	2.84	3.08	2.92	2.88	3.07
Job opportunities	4.49	4.65	5.11	4.46	4.74	4.35
A cleaner environment	3.84	3.54	3.00	3.73	3.96	3.83
Better education levels achieved	5.62	5.52	5.75	5.52	5.77	5.03
Managing and control on the climate change	5.96	6.13	6.30	6.31	5.83	5.65
Managing migration	7.28	7.14	7.17	7.19	7.07	7.44
Fight against corruption	7.28	7.03	7.41	7.35	7.46	6.58
Removed from the Grey list	8.20	7.80	6.79	8.21	7.55	8.44
Reduction in criminal activities	8.58	7.81	6.82	8.25	7.89	9.00
Reforms at the correctional facility	9.97	9.86	9.95	10.06	10.35	9.53
Control on planning and construction	8.45	8.47	8.53	8.58	8.23	8.38

A Study about various themes in Malta

	Full-time employed	Part-time employed	Self- employed	Inactive	Homemaker /carer full- time	Retired
Strengthening of families	2.12	2.70	2.55	2.64	1.92	2.46
Control on the cost of living	2.85	2.49	3.60	2.60	3.71	3.06
Job opportunities	4.66	3.57	3.10	4.15	5.13	5.19
A cleaner environment	3.85	4.30	3.44	3.25	4.31	3.40
Better education levels achieved	5.43	5.39	5.30	6.39	5.56	5.61
Managing and control on the climate change	5.99	6.43	5.06	6.30	6.11	6.24
Managing migration	7.16	6.96	8.47	5.82	7.37	7.21
Fight against corruption	7.31	7.28	7.09	7.37	7.83	6.77
Removed from the Grey list	8.15	7.96	7.39	8.07	8.71	7.69
Reduction in criminal activities	8.70	8.50	7.94	7.59	7.76	7.71
Reforms at the correctional facility	9.88	10.25	10.96	10.93	9.58	9.71
Control on planning and construction	8.43	10.79	6.60	8.80	8.57	7.90

	0%	15%	25%	35%
Strengthening of families	2.77	2.14	1.70	2.85
Control on the cost of living	3.11	2.36	2.88	4.00
Job opportunities	4.12	4.75	4.32	5.46
A cleaner environment	4.05	3.91	3.65	2.38
Better education levels achieved	5.50	5.18	6.05	6.46
Managing and control on the climate change	6.24	6.25	5.90	4.54
Managing migration	6.32	7.10	7.82	10.31
Fight against corruption	6.68	7.68	7.54	7.38
Removed from the Grey list	7.90	8.20	8.40	8.47
Reduction in criminal activities	8.65	9.18	7.75	9.23
Reforms at the correctional facility	10.10	10.16	9.65	9.77
Control on planning and construction	8.99	10.12	7.28	6.00

	Southern Harbour	Northern Harbour	South Eastern	Western	Northern	Gozo and Comino
Strengthening of families	2.44	2.19	2.09	2.06	2.94	2.25
Control on the cost of living	2.82	2.94	3.36	2.47	2.88	3.97
Job opportunities	4.09	4.62	4.57	5.11	4.04	6.79
A cleaner environment	3.67	3.61	4.08	3.75	3.47	4.29
Better education levels achieved	5.83	5.96	5.23	4.80	5.57	5.50
Managing and control on the climate change	6.60	6.06	5.73	6.19	5.69	6.41
Managing migration	7.13	7.41	7.41	6.41	6.85	8.17
Fight against corruption	7.02	6.90	7.74	6.93	7.39	7.57
Removed from the Grey list	7.82	7.88	8.34	7.60	8.20	9.03
Reduction in criminal activities	7.74	7.61	9.19	8.71	8.92	6.55
Reforms at the correctional facility	10.21	9.95	10.09	10.01	9.74	8.66
Control on planning and construction	8.65	8.46	7.77	8.75	9.06	7.59



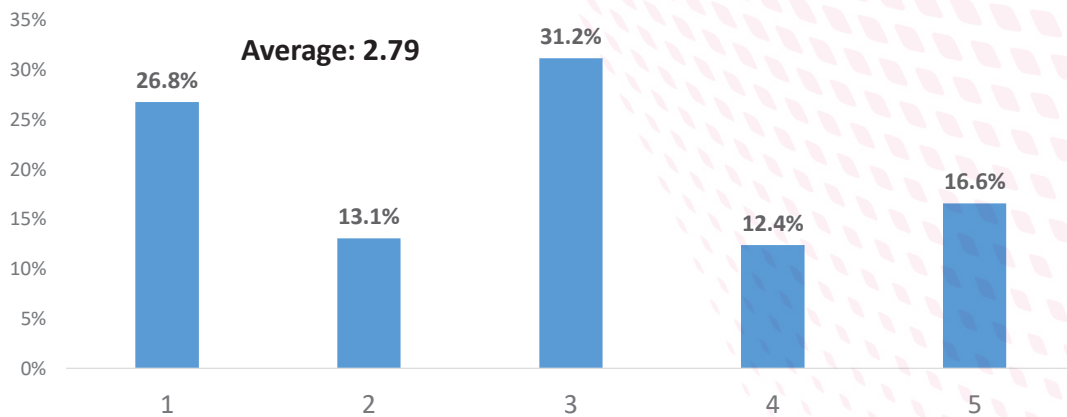


Section 4 Migration

SECTION 4.1 – THE EFFECT OF MIGRATION IN MALTA

- Around one-third of the respondents gave a neutral reply (3) when asked if they think that migrants can contribute to strengthen Malta, 31.2%.
- The overall average is 2.79. This mean that for the majority, migrants are considered as a burden to our country.
- Male respondents think that migrants are considered a burden more than female respondents do (2.75 – males vs 2.82 – females).
- Migrants are the least “burden” for those aged between 26-35, an average of 2.95.
- The higher the level of education of the respondents the more they think that migrants can contribute to strengthen our country.
- Migrants are considered to be the greatest burden for those respondents who are self-employed (average of 2.31).
- High income earners are the ones who consider migrants as a burden the least (an average of 3.13 out of 5).
- Migrants are the least “burden” for those respondents residing in the Gozo, an average of 3.23 out of 5.

From 1 to 5, where 1 means ‘absolutely disagree’ and 5 means ‘strongly agree’, do you think that immigrants contribute to strengthening our country more than they are burdensome for our country?



A Study about various themes in Malta

	Average:		Average:
Female	2.82	Full-time employed	2.86
Male	2.75	Part-time employed	2.39
		Self-employed	2.31
16-25	2.45	Inactive	3.38
26-35	2.95	Homemaker/carer full-time	3.15
36-45	2.46	Retired	2.69
46-55	3.16		
56-65	2.92	<i>Income tax bracket</i>	
66+	2.72	0%	2.84
Married	2.86	15%	2.67
Not living with a partner	2.65	25%	2.53
		35%	3.13
Primary	2.56	Southern Harbour	2.54
Secondary	2.72	Northern Harbour	2.68
Post secondary	2.52	South Eastern	2.96
Tertiary	3.24	Western	2.87
		Northern	2.91
		Gozo and Comino	3.23

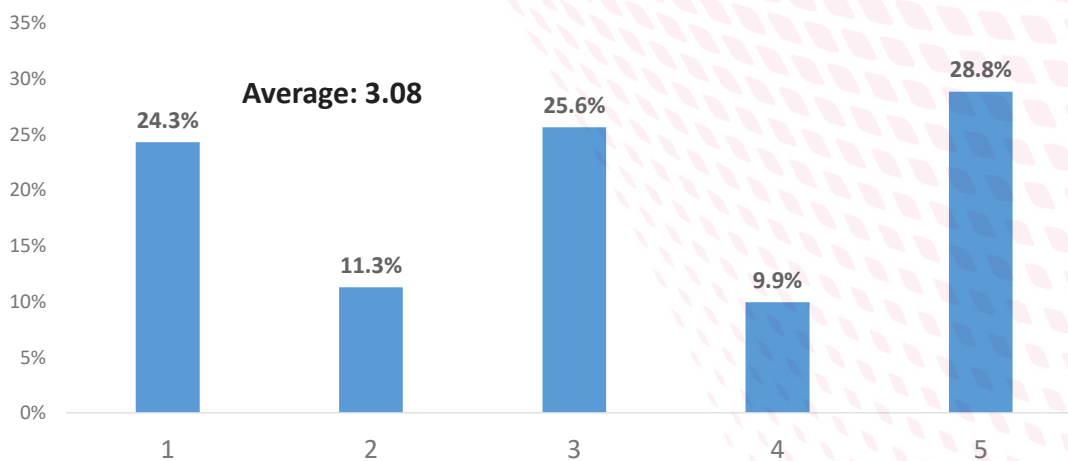
SECTION 4.2 – AN AFRICAN IMMIGRANT AS THE HUSBAND/WIFE OF YOUR CHILDREN

When asked how acceptable it would be if an (African) immigrant marries a member of their family (such as their child) from 1 to 5 (where 1 means 'absolutely unacceptable' and 5 means 'very acceptable'), the majority said 5 (28.8%). The overall average is 3.08 out of 5.

- For male respondents it is more acceptable that a family member marries an African immigrant than their female counterpart (3.11 – male vs 3.05 - female).
- Those aged between 26-35 are the ones who mostly accept that an African immigrant marries a member of their family (an average of 3.31).
- The lower the level of education of the respondents the more they are against the idea that an African immigrant marries a member of their family (an average of 2.62 out of 5).
- Full-time employees are the ones who mostly accept that an African immigrant marries a member of their family (an average of 3.48).
- With an average of 2.92 out of 5, low income earners are those who mostly are against that an African immigrant marries a member of their family.

Respondents residing in the Northern district are the ones who mostly accept that an African immigrant marries a member of their family (an average of 3.59).

From 1 to 5, where 1 means 'absolutely unacceptable' and 5 means 'very acceptable', how acceptable would it be for you if an African immigrant marries a member of your family?



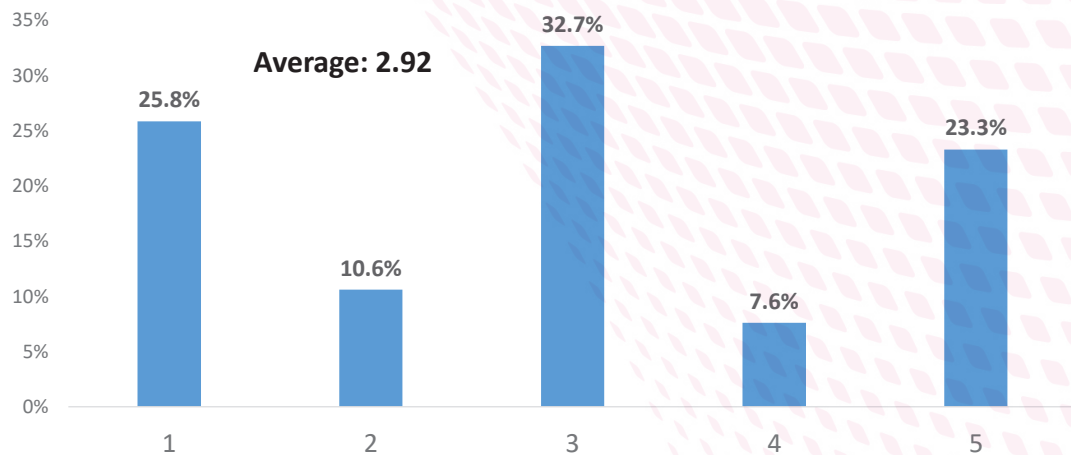
A Study about various themes in Malta

	Average:		Average:
Female	3.05	Full-time employed	3.48
Male	3.11	Part-time employed	2.88
		Self-employed	2.35
16-25	3.08	Inactive	2.96
26-35	3.63	Homemaker/carer full-time	3.11
36-45	3.31	Retired	2.71
46-55	3.08		
56-65	2.62	<i>Income tax bracket</i>	
66+	2.76	0%	2.92
Married	2.98	15%	2.85
Not living with a partner	3.21	25%	3.47
		35%	4.07
Primary	2.62	Southern Harbour	2.77
Secondary	2.79	Northern Harbour	2.93
Post secondary	3.11	South Eastern	3.14
Tertiary	3.90	Western	3.20
		Northern	3.59
		Gozo and Comino	3.26

SECTION 4.3 – THE EFFECT OF MIGRATION ON THE SALARIES IN MALTA

- Nearly a quarter of the respondents strongly agree that the main reason for having low wages in Malta is because of immigration. On the other hand, 25.8% of the respondents absolutely disagree with such a statement. The overall average is 2.92. This indicates that overall, respondents have a neutral opinion.
- Young respondents are the ones who mostly believe that immigration is affecting the salaries in Malta (kept low), an average of 3.23 out of 5.
- Respondents with a high level of education are the ones who least believe that immigration is the main factor why salaries in Malta are being kept low.
- Self employed respondents are the ones who mostly agree that the main reason for having low wages in Malta is because of immigration (an average of 3.42 out of 5).
- High income earners are the ones who least believe that immigration is the main factor why salaries in Malta are being kept low (an average of 1.67 out of 5).
- Respondents who reside in Gozo are the ones who least believe that immigration is the main factor why salaries in Malta are being kept low (an average of 2.03).

From 1 to 5, where 1 means 'absolutely disagree' and 5 means 'strongly agree', do you think immigration is the biggest reason why wages are being kept low in Malta?



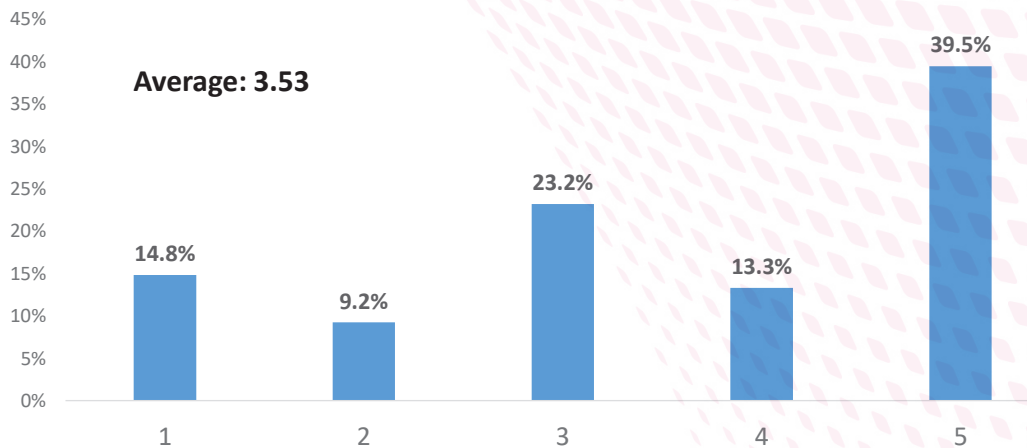
A Study about various themes in Malta

	Average:		Average:
Female	2.65	Full-time employed	2.85
Male	3.22	Part-time employed	2.61
		Self-employed	3.42
16-25	3.23	Inactive	3.09
26-35	2.63	Homemaker/carer full-time	2.63
36-45	2.98	Retired	3.06
46-55	2.68		
56-65	3.01	<i>Income tax bracket</i>	
66+	3.04	0%	3.09
Married	2.92	15%	3.04
Not living with a partner	2.89	25%	2.94
		35%	1.67
Primary	3.00	Southern Harbour	2.82
Secondary	2.93	Northern Harbour	2.91
Post secondary	3.14	South Eastern	2.79
Tertiary	2.61	Western	3.21
		Northern	3.18
		Gozo and Comino	2.03

SECTION 4.4 – IMMIGRANTS LIVING IN YOUR AREA

- For almost forty per cent of the respondents, it is absolutely okay that some immigrants are living close to their home (39.5%). The overall average is 3.53 out of 5.
- Female respondents do not mind at all if some immigrants are living close to their home. This contrasts to the reply given by the male respondents (3.65 – female vs 3.40 male).
- Young respondents (less than 26) are the ones who mostly do not like the idea that immigrants are living close to their home (an average of 2.88 out of 5).
- Those who have the highest level of education are the ones who mostly do not mind if immigrants are living close to their home (an average of 4.09).
- Homemakers/carers full-time are those who mostly do not mind if some immigrants are living close to their home (an average of 4.22 out of 5).
- High income earners are the ones who mostly do not mind if some immigrants are living close to their home (an average of 4.47).
- Respondents residing in the Southern harbour district are the ones who mostly do not like that that immigrants are living close to their home (an average of 3.17 out of 5).

From 1 to 5, where 1 means 'absolutely disagree' and 5 means 'strongly agree', would it be okay for you if immigrants live near your home?



A Study about various themes in Malta

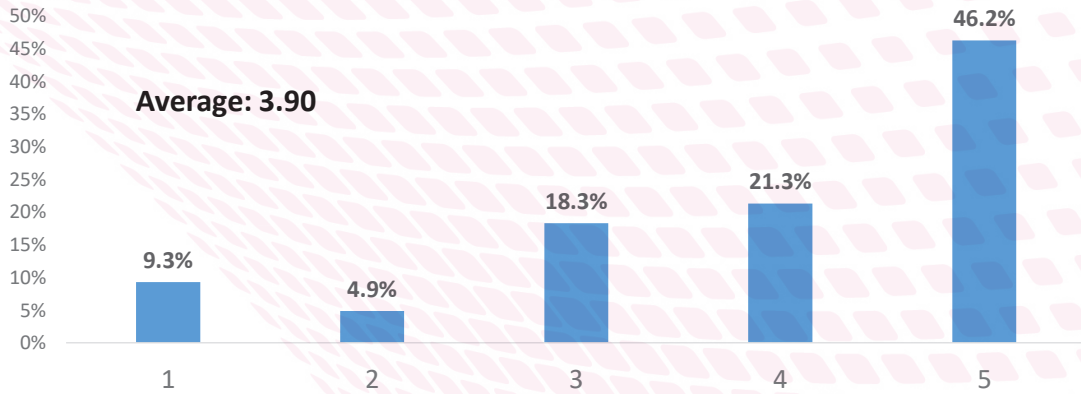
	Average:		Average:
Female	3.65	Full-time employed	3.65
Male	3.40	Part-time employed	2.65
		Self-employed	3.96
16-25	2.88	Inactive	2.81
26-35	3.62	Homemaker/carer full-time	4.22
36-45	3.69	Retired	3.47
46-55	3.84		
56-65	3.60	<i>Income tax bracket</i>	
66+	3.56	0%	3.15
Married	3.66	15%	3.19
Not living with a partner	3.41	25%	4.01
		35%	4.47
Primary	3.31	Southern Harbour	3.17
Secondary	3.46	Northern Harbour	3.59
Post secondary	3.25	South Eastern	3.42
Tertiary	4.09	Western	3.84
		Northern	3.61
		Gozo and Comino	4.00



SECTION 4.5 – RACIAL DISCRIMINATION IN MALTA

The majority of the respondents think that racial discrimination is a problem in Malta (46.2% - strongly agree). The average is 3.90 out of 5.

From 1 to 5, where 1 means 'absolutely disagree' and 5 means 'strongly agree', do you think racial discrimination is a problem in Malta?

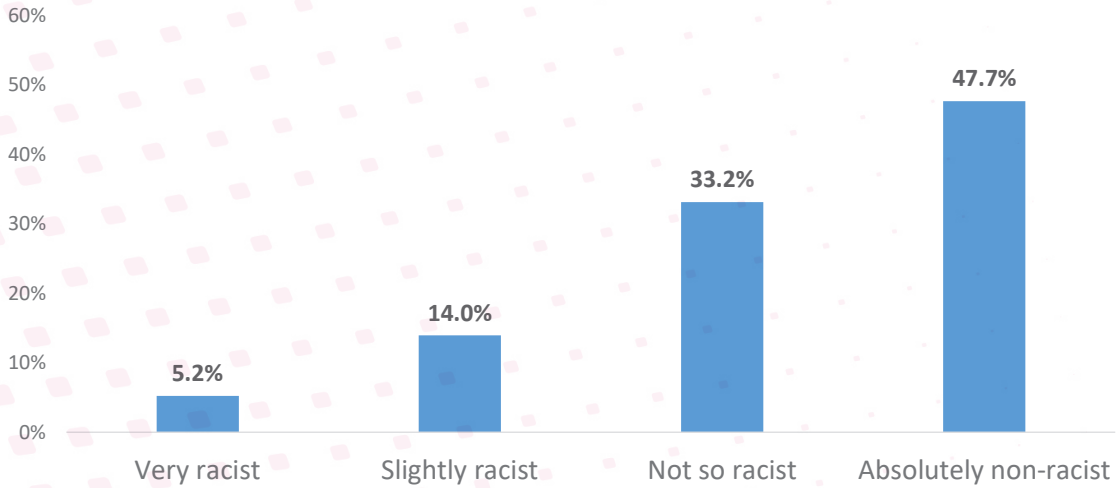


	Average:		Average:
Female	3.85	Full-time employed	4.15
Male	3.96	Part-time employed	3.33
		Self-employed	3.92
16-25	3.85	Inactive	4.28
26-35	4.06	Homemaker/carer full-time	3.75
36-45	3.81	Retired	3.68
46-55	4.25		
56-65	3.64	<i>Income tax bracket</i>	
66+	3.76	0%	3.70
Married	3.88	15%	4.08
Not living with a partner	3.91	25%	4.28
		35%	4.60
Primary	3.74	Southern Harbour	3.75
Secondary	3.71	Northern Harbour	3.72
Post secondary	4.00	South Eastern	4.02
Tertiary	4.28	Western	4.12
		Northern	4.06
		Gozo and Comino	3.90

SECTION 4.6 – BEING A RACIST

Nearly half of the respondents consider themselves as absolutely not racist (47.7%). Only 5.2% of the respondents consider themselves as very racist.

In your opinion, do you consider yourself to be:



	0%	15%	25%	35%
Very racist	8.9%	9.8%	1.3%	0.0%
Slightly racist	24.8%	7.9%	9.7%	0.0%
Not so racist	32.7%	34.8%	34.4%	13.3%
Absolutely non-racist	33.6%	47.6%	54.5%	86.7%

	Southern Harbour	Northern Harbour	South Eastern	Western	Northern	Gozo and Comino
Very racist	8.2%	3.8%	0.0%	4.5%	13.9%	0.0%
Slightly racist	16.9%	11.7%	16.1%	13.6%	13.9%	5.0%
Not so racist	35.4%	36.4%	40.2%	26.6%	24.3%	22.5%
Absolutely non-racist	39.5%	48.1%	43.7%	55.2%	47.8%	72.5%



	0%	15%	25%	35%
Very racist	8.9%	9.8%	1.3%	0.0%
Slightly racist	24.8%	7.9%	9.7%	0.0%
Not so racist	32.7%	34.8%	34.4%	13.3%
Absolutely non-racist	33.6%	47.6%	54.5%	86.7%

	Southern Harbour	Northern Harbour	South Eastern	Western	Northern	Gozo and Comino
Very racist	8.2%	3.8%	0.0%	4.5%	13.9%	0.0%
Slightly racist	16.9%	11.7%	16.1%	13.6%	13.9%	5.0%
Not so racist	35.4%	36.4%	40.2%	26.6%	24.3%	22.5%
Absolutely non-racist	39.5%	48.1%	43.7%	55.2%	47.8%	72.5%

	0%	15%	25%	35%
Very racist	8.9%	9.8%	1.3%	0.0%
Slightly racist	24.8%	7.9%	9.7%	0.0%
Not so racist	32.7%	34.8%	34.4%	13.3%
Absolutely non-racist	33.6%	47.6%	54.5%	86.7%

	Southern Harbour	Northern Harbour	South Eastern	Western	Northern	Gozo and Comino
Very racist	8.2%	3.8%	0.0%	4.5%	13.9%	0.0%
Slightly racist	16.9%	11.7%	16.1%	13.6%	13.9%	5.0%
Not so racist	35.4%	36.4%	40.2%	26.6%	24.3%	22.5%
Absolutely non-racist	39.5%	48.1%	43.7%	55.2%	47.8%	72.5%

A Study about various themes in Malta

	Primary	Secondary	Post-secondary	Tertiary
Very racist	4.3%	4.8%	5.7%	6.6%
Slightly racist	11.4%	12.4%	23.1%	9.7%
Not so racist	34.3%	38.0%	29.7%	24.5%
Absolutely non-racist	50.0%	44.9%	41.5%	59.2%

	Full-time employed	Part-time employed	Self-employed	Inactive	Homemaker/carer full-time	Retired
Very racist	6.9%	8.4%	12.0%	12.8%	0.0%	0.8%
Slightly racist	12.3%	18.1%	4.0%	42.6%	11.1%	12.5%
Not so racist	31.0%	31.3%	46.0%	23.4%	43.1%	33.3%
Absolutely non-racist	49.7%	42.2%	38.0%	21.3%	45.8%	53.4%

	Female	Male
Very racist	3.7%	7.0%
Slightly racist	11.7%	16.6%
Not so racist	35.0%	31.0%
Absolutely non-racist	49.6%	45.5%

	16-25	26-35	36-45	46-55	56-65	66+
Very racist	20.8%	1.7%	6.9%	1.3%	3.3%	0.5%
Slightly racist	31.3%	10.3%	15.5%	6.5%	12.2%	10.7%
Not so racist	20.8%	44.8%	34.5%	31.2%	31.7%	33.5%
Absolutely non-racist	27.1%	43.1%	43.1%	61.0%	52.8%	55.3%

	Married	Not in a relationship
Very racist	4.9%	5.9%
Slightly racist	10.5%	17.5%
Not so racist	34.2%	31.5%
Absolutely non-racist	50.4%	45.2%





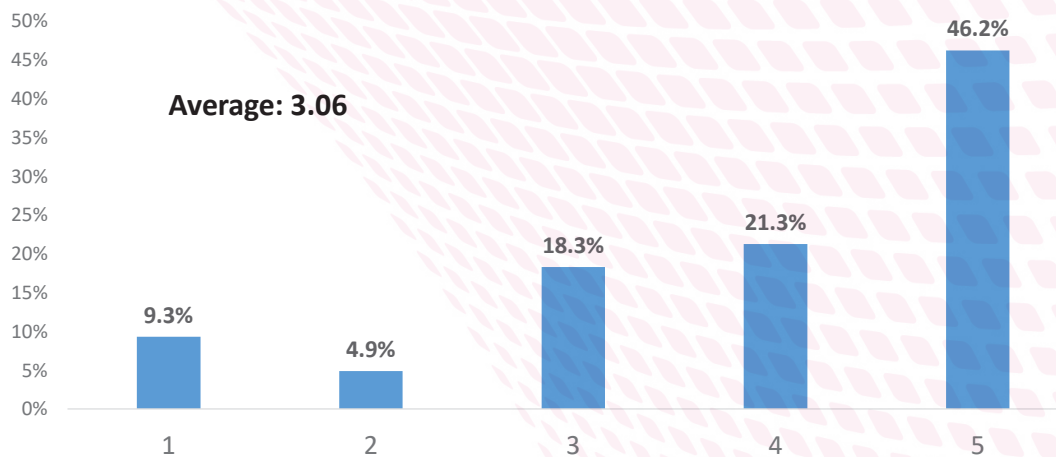
Section 5 Crime



SECTION 5.1 – WALKING ALONE AT NIGHT

- The majority of respondents feel very safe walking alone at night in their neighbourhood, 46.2%. However, 9.3% of the respondents said that it is very dangerous to walk alone at night in their neighbourhood. The overall average is 3.06 out of 5.
- Male respondents feel more safe than their female counterpart (3.77 – male vs 2.44 – female).
- Respondents aged 66+ are the ones who mostly do not feel safe walking alone at night in their neighbourhood (an average of 2.77 out of 5).
- The Gozitans are the ones who mostly feel safe walking alone during the night in their neighbourhood (an average of 3.43 out of 5).

From 1 to 5, where 1 means 'absolutely dangerous' and 5 means 'very safe', how safe do you feel to walk alone at night (after 11pm) in your area?

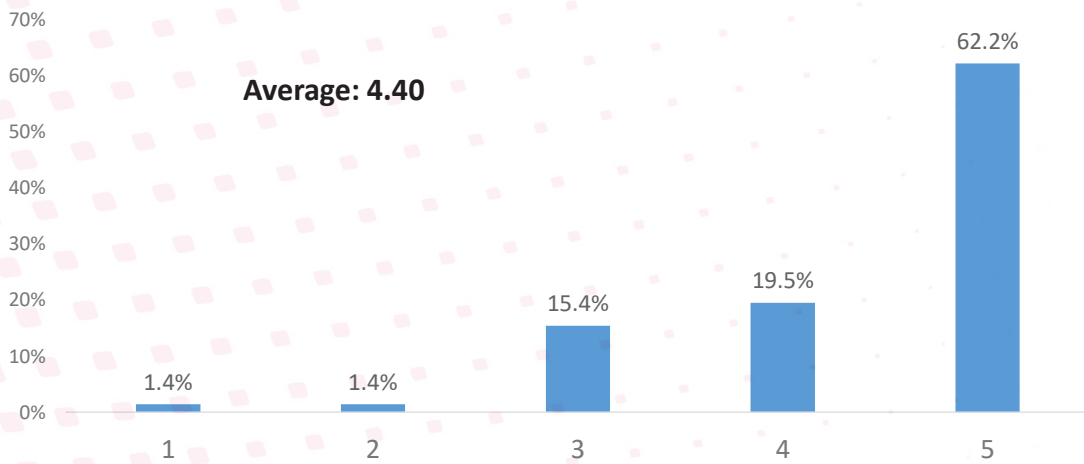


	Average:		Average:
Female	2.44	Full-time employed	3.46
Male	3.77	Part-time employed	3.00
		Self-employed	3.71
16-25	3.23	Inactive	2.89
26-35	3.36	Homemaker/carer full-time	2.01
36-45	3.45	Retired	2.73
46-55	2.82	<i>Income tax bracket</i>	
56-65	2.85	0%	2.90
66+	2.77	15%	3.01
Married	2.92	25%	3.68
Not living with a partner	3.22	35%	4.20
Primary	2.46	Southern Harbour	3.07
Secondary	2.90	Northern Harbour	2.79
Post secondary	3.42	South Eastern	3.10
Tertiary	3.17	Western	3.24
		Northern	3.18
		Gozo and Comino	3.43

SECTION 5.2 – ACCESS TO DRUGS

- More than sixty per cent of the respondents said that it is very easy to buy drugs in Malta (62.2%). Only 1.4% of the respondents believe that it is very difficult to buy drugs in Malta. The overall average is 4.40. Therefore, for the respondents, it is very easy to have access to drugs.
- The lowest average was given by the older respondents (66+), an average of 4.09 out of 5.
- Retired respondents have the lowest average as well, 4.11 out of 5.

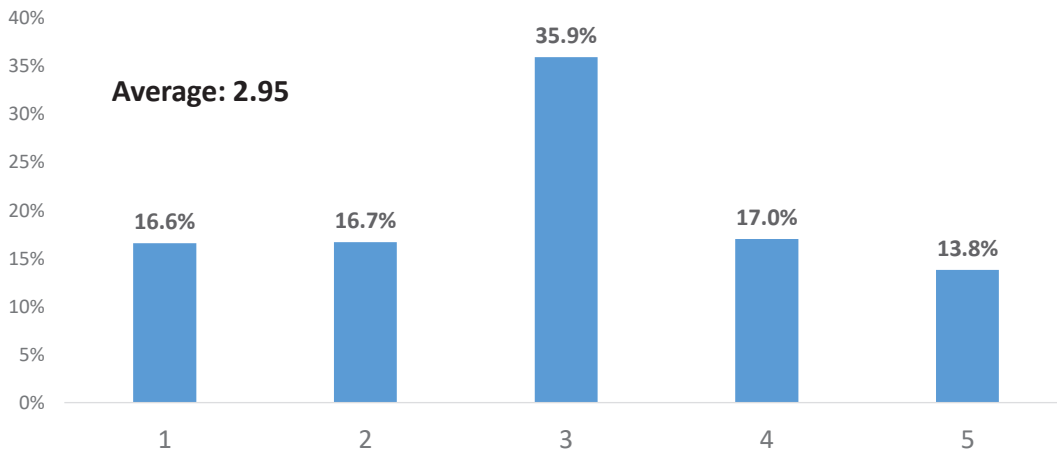
From 1 to 5, where 1 means ‘not easy at all’ and 5 means ‘very easy’, how easy do you think it is for young people in Malta to access drugs?



	Average:		Average:
Female	4.36	Full-time employed	4.52
Male	4.43	Part-time employed	4.54
		Self-employed	4.84
16-25	4.38	Inactive	4.17
26-35	4.60	Homemaker/carer full-time	4.39
36-45	4.67	Retired	4.11
46-55	4.49	<i>Income tax bracket</i>	
56-65	4.25	0%	4.26
66+	4.09	15%	4.85
Married	4.38	25%	4.44
Not living with a partner	4.42	35%	4.87
Primary	4.16	Southern Harbour	4.50
Secondary	4.37	Northern Harbour	4.30
Post secondary	4.55	South Eastern	4.43
Tertiary	4.39	Western	4.40
		Northern	4.50
		Gozo and Comino	4.05

SECTION 5.3 – TACKLING DOMESTIC VIOLENCE IN MALTA

- When asked how effective they think the Police are when dealing with the problem of domestic violence in Malta from 1 to 5 (where 1 means 'absolutely ineffective' and 5 means 'extremely effective'), more than one third gave a neutral reply (35.9%). The overall average is 2.95.
- There is no difference in results when the gender of the respondent is taken into account.
- Respondents aged between 56-65 are the ones who mostly think that the police are doing an effective job when dealing with the problem of domestic violence (an average of 3.34 out of 5).
- Those respondents who are married have a more positive opinion about this matter (3.05 – married vs 2.81 – not living with a partner).
- Respondents with the highest level of education are the ones who least believe that the police are being effective when dealing with the problem of domestic violence in Malta (an average of 2.45 out of 5).
- Retired respondents are the ones who mostly think that the police are doing an effective job when dealing with the problem of domestic violence (an average of 3.33).
- Respondents residing in the Southern harbour district are the ones who mostly think that the police are doing an effective job when dealing with the problem of domestic violence (an average of 3.14 out of 5).

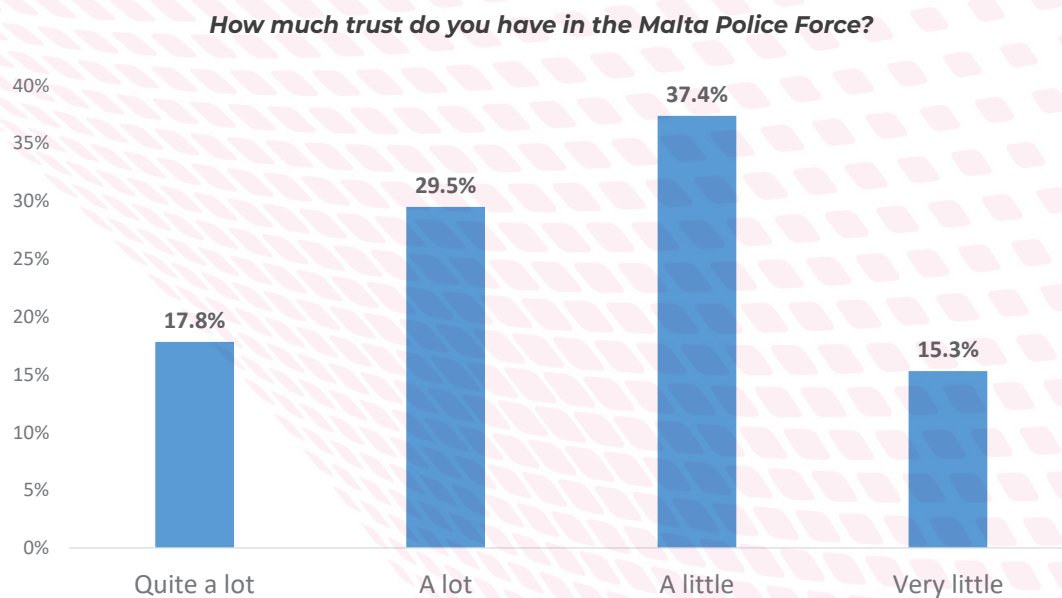


A Study about various themes in Malta

	Average:		Average:
Female	2.95	Full-time employed	2.73
Male	2.94	Part-time employed	2.72
		Self-employed	3.23
16-25	2.92	Inactive	2.49
26-35	2.47	Homemaker/carer full-time	3.03
36-45	2.76	Retired	3.33
46-55	2.92		
56-65	3.34	<i>Income tax bracket</i>	
66+	3.27	0%	3.13
		15%	3.00
Married	3.05	25%	2.51
Not living with a partner	2.81	35%	2.53
Primary	3.36	Southern Harbour	3.14
Secondary	3.17	Northern Harbour	3.05
Post secondary	2.78	South Eastern	2.95
Tertiary	2.45	Western	2.80
		Northern	2.70
		Gozo and Comino	2.72

SECTION 5.4 – TRUST IN THE POLICE FORCE

More than half of the respondents have a little or very little trust in the Police force.



	Female	Male
Quite a lot	23.7%	11.0%
A lot	27.2%	32.2%
A little	35.6%	39.4%
Very little	13.5%	17.4%

	16-25	26-35	36-45	46-55	56-65	66+
Quite a lot	12.5%	8.6%	21.1%	14.3%	22.0%	27.7%
A lot	14.6%	24.1%	29.8%	37.7%	38.2%	33.0%
A little	56.3%	43.1%	40.4%	32.5%	29.3%	26.2%
Very little	16.7%	24.1%	8.8%	15.6%	10.6%	13.1%

	Married	Not in a relationship
Quite a lot	18.3%	17.7%
A lot	36.6%	18.3%
A little	32.4%	44.1%
Very little	12.6%	19.9%

A Study about various themes in Malta

	Primary	Secondary	Post-secondary	Tertiary		
Quite a lot	35.7%	20.8%	16.5%	7.7%		
A lot	35.7%	31.7%	23.1%	26.5%		
A little	21.4%	37.5%	35.8%	48.0%		
Very little	7.1%	10.0%	24.5%	17.9%		

	Full-time employed	Part-time employed	Self-employed	Inactive	Homemaker/carer full-time	Retired
Quite a lot	10.3%	13.3%	14.0%	19.1%	35.7%	25.0%
A lot	30.5%	18.1%	26.0%	17.0%	25.7%	36.0%
A little	39.0%	54.2%	60.0%	51.1%	28.6%	26.1%
Very little	20.3%	14.5%	0.0%	12.8%	10.0%	12.9%

	0%	15%	25%	35%
Quite a lot	26.0%	15.2%	9.1%	13.3%
A lot	27.8%	26.2%	21.4%	20.0%
A little	36.1%	44.5%	34.4%	66.7%
Very little	10.1%	14.0%	35.1%	0.0%

	Southern Harbour	Northern Harbour	South Eastern	Western	Northern	Gozo and Comino
Quite a lot	12.8%	25.8%	13.2%	15.5%	20.0%	17.5%
A lot	30.8%	26.3%	39.1%	27.7%	18.3%	40.0%
A little	41.5%	28.8%	35.6%	38.7%	47.0%	42.5%
Very little	14.9%	19.1%	12.1%	18.1%	14.8%	0.0%



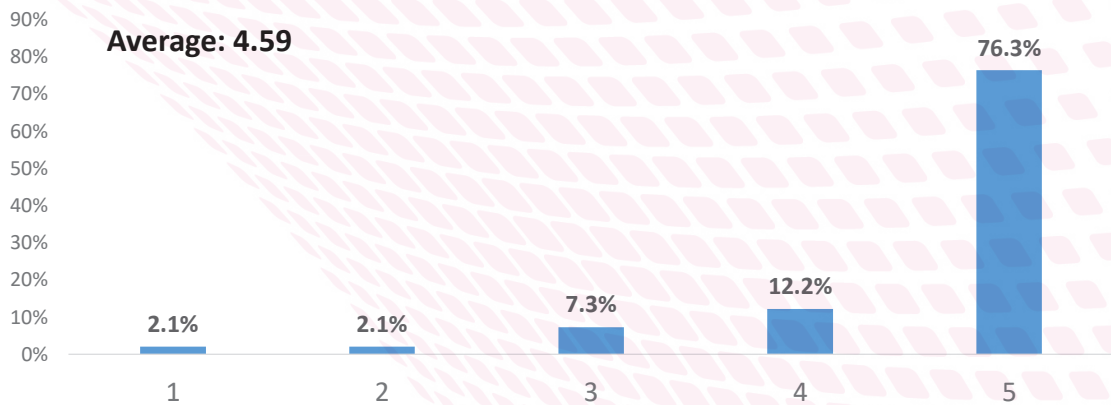


Section 6
Good Governance

SECTION 6.1 – THE FIGHT AGAINST CORRUPTION

More than three-quarters of the respondents consider the fight against corruption as a very important matter (76.3%). The overall average is 4.59. This means that the respondents are totally against corruption.

From 1 to 5, where 1 means 'unimportant' and 5 means 'very important', how important do you think the fight against corruption is?

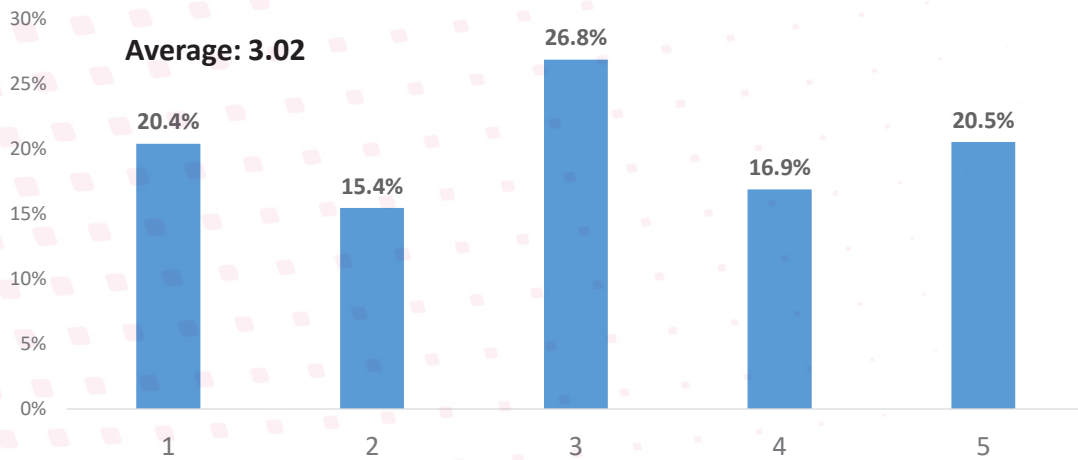


	Average:		Average:
Female	4.53	Full-time employed	4.70
Male	4.64	Part-time employed	3.92
		Self-employed	4.64
16-25	4.46	Inactive	4.45
26-35	4.60	Homemaker/carer full-time	4.58
36-45	4.50	Retired	4.67
46-55	4.65		
56-65	4.58	<i>Income tax bracket</i>	
66+	4.67	0%	4.55
		15%	4.57
Married	4.66	25%	4.52
Not living with a partner	4.46	35%	4.20
Primary	4.44	Southern Harbour	4.70
Secondary	4.50	Northern Harbour	4.39
Post secondary	4.72	South Eastern	4.53
Tertiary	4.64	Western	4.72
		Northern	4.70
		Gozo and Comino	4.59

SECTION 6.2 – ARE YOU PAID ENOUGH?

- Respondents were asked if they feel that they are paid enough for the job they do. The overall average is 3.02 out of 5. This means that the respondents have a neutral opinion about this subject.
- Male respondents feel that they are well paid more than their female counterparts (3.18 – male vs 2.84 female).
- Those aged between 26-35 are the ones who mostly feel that they are paid well for the work that they do (an average of 3.38 out of 5).
- Respondents who completed tertiary education are the ones who mostly feel that they are well paid (3.43 out of 5).
- Low income earners are the ones who mostly feel that they are not well paid, an average of 2.77 out of 5.
- Respondents residing in the Southern harbour are the ones who mostly feel that they are not well paid (an average of 2.71 out of 5).

From 1 to 5, where 1 means ‘absolutely disagree’ and 5 means ‘strongly agree’, do you feel that you are paid enough for the amount of work you do?



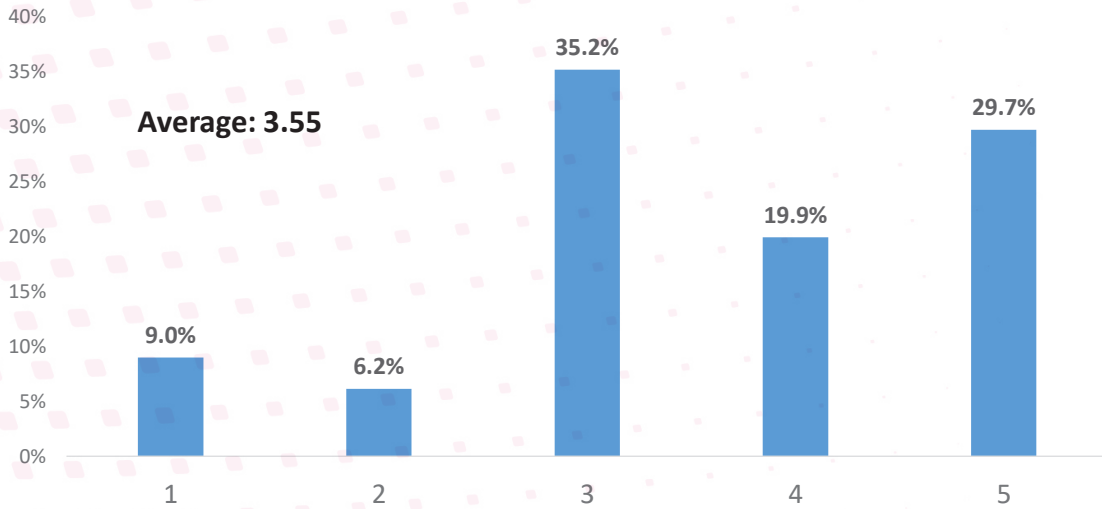


	Average:		Average:
Female	2.84	Full-time employed	3.18
Male	3.18	Part-time employed	2.63
		Self-employed	3.30
16-25	2.89	Inactive	2.93
26-35	3.38	Homemaker/carer full-time	3.00
36-45	2.89	Retired	2.65
46-55	2.89		
56-65	3.03	<i>Income tax bracket</i>	
66+	2.87	0%	2.77
Married	3.11	15%	3.06
Not living with a partner	2.93	25%	3.12
		35%	3.07
Primary	2.52	Southern Harbour	2.71
Secondary	2.87	Northern Harbour	2.75
Post secondary	2.87	South Eastern	2.98
Tertiary	3.43	Western	3.57
		Northern	3.16
		Gozo and Comino	3.41

SECTION 6.3 – ARE POLITICIANS CORRUPT?

- Respondents took a neutral position when asked about if the elected politicians are corrupt or not. The overall average is 3.55 out of 5 (where 1 means ‘absolutely disagree’ and 5 means ‘strongly agree’).
- Male respondents tend to agree more with the statement: Do you think the elected politicians are corrupt? than their female counterparts (3.70– male vs 3.43 - female).
- On average, young respondents are the ones who least think that the elected politicians are corrupt (an average of 3.10 out of 5).
- Respondents with the lowest level of education are the ones who least think that the elected politicians are corrupt (an average of 3.31 out of 5).
- Inactive respondents and those who are currently working are the ones who least think that the politicians are corrupt (an average of 3.03 out of 5 respectively).
- Respondents residing in the Western district are the ones who mostly think that the elected politicians are corrupt (an average of 3.86 out of 5).

From 1 to 5, where 1 means ‘absolutely disagree’ and 5 means ‘strongly agree’, do you think the elected politicians are corrupt?



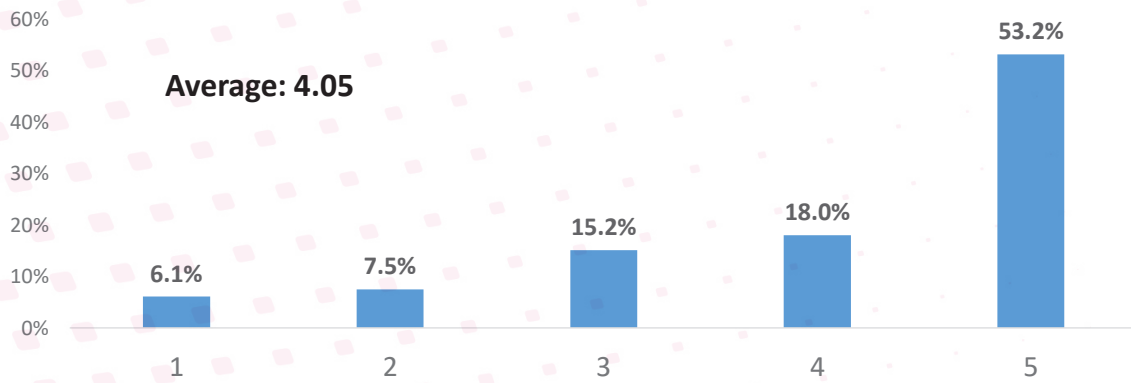


	Average:		Average:
Female	3.43	Full-time employed	3.62
Male	3.70	Part-time employed	3.36
		Self-employed	4.34
16-25	3.10	Inactive	3.03
26-35	3.89	Homemaker/carer full-time	3.87
36-45	3.47	Retired	3.37
46-55	3.87		
56-65	3.43	<i>Income tax bracket</i>	
66+	3.42	0%	3.32
Married	3.56	15%	3.52
Not living with a partner	3.55	25%	3.83
		35%	4.33
Primary	3.31	Southern Harbour	3.44
Secondary	3.57	Northern Harbour	3.58
Post secondary	3.34	South Eastern	3.30
Tertiary	3.87	Western	3.86
		Northern	3.73
		Gozo and Comino	3.39

SECTION 6.4 – ARE THE UNIONS STILL REPRESENTING THE INTERESTS OF THE WORKERS?

More than half of the respondents, 53.2% strongly agree that the Unions still represent the interests of the workers. Only 6.1% of the respondents strongly disagree. The overall average is 4.05 out of 5.

From 1 to 5, where 1 means ‘absolutely disagree’ and 5 means ‘strongly agree’, do you think that the Unions still represent the interests of the workers?

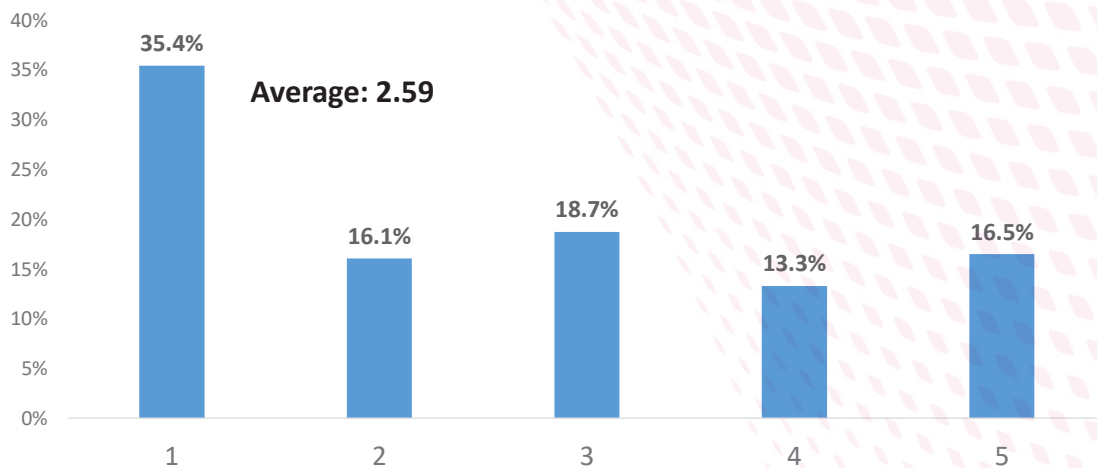


Female	Average: 4.17	Full-time employed	Average: 4.08
Male	3.91	Part-time employed	3.08
16-25	3.75	Self-employed	4.18
26-35	4.19	Inactive	4.40
36-45	4.07	Homemaker/carer full-time	4.14
46-55	4.09	Retired	4.19
56-65	3.92	<i>Income tax bracket</i>	
66+	4.17	0%	3.77
Married	4.07	15%	3.89
Not living with a partner	4.03	25%	4.33
Primary	4.02	35%	2.60
Secondary	3.93	Southern Harbour	3.90
Post secondary	4.06	Northern Harbour	4.08
Tertiary	4.28	South Eastern	3.82
		Western	4.29
		Northern	4.11
		Gozo and Comino	4.49

SECTION 6.5 – TALKING TO A POLITICIAN TO HELP YOU AND GIVE YOU A PREFERENTIAL SERVICE

- The majority of the respondents do not feel comfortable talking to a politician to help them and give them a preferential service (35.4% strongly disagree). The overall average is 2.59 out of 5.
- Female respondents feel more comfortable talking to a politician to help them and give them a preferential service than male respondents (2.60 – female vs 2.58 – male).
- Respondents with the highest level of education are the ones who mostly do not agree with the fact that you have to talk to a politician in order to get some help (an average of 2.12 out of 5).
- Respondents who are currently inactive are the ones who mostly feel comfortable talking to a politician to help them and give them a preferential service (an average of 2.85 out of 5).
- High income earners are the ones who least feel comfortable talking to a politician to help them and give them a preferential service (an average of 1.13 out of 5).
- Respondents residing in the Northern district are the ones who mostly feel comfortable talking to a politician to help them and give them a preferential service (2.90 out of 5).

From 1 to 5, where 1 means 'I totally disagree' and 5 means 'I strongly agree', if you need any assistance, do you feel comfortable talking to a politician to help you and give you a referral service?



A Study about various themes in Malta

	Average:		Average:
Female	2.60	Full-time employed	2.59
Male	2.58	Part-time employed	2.58
		Self-employed	2.46
16-25	2.81	Inactive	2.85
26-35	2.72	Homemaker/carer full-time	2.80
36-45	2.46	Retired	2.56
46-55	2.60		
56-65	2.61	<i>Income tax bracket</i>	
66+	2.38	0%	2.81
		15%	2.79
Married	2.57	25%	2.70
Not living with a partner	2.55	35%	1.13
Primary	2.72	Southern Harbour	2.58
Secondary	2.70	Northern Harbour	2.66
Post secondary	2.66	South Eastern	2.51
Tertiary	2.12	Western	2.46
		Northern	2.90
		Gozo and Comino	2.31



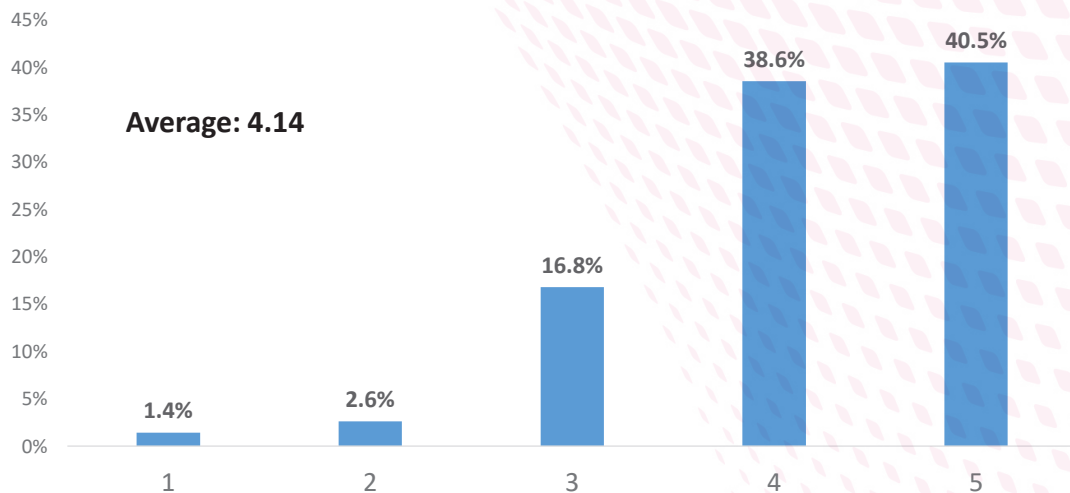


Section 7
Life satisfaction

SECTION 7.1 – HOW SATISFIED ARE YOU WITH YOUR LIFE IN GENERAL?

- More than forty per cent of the respondents are very satisfied with their life (40.5%). Only 1.4% of the respondents said that they are absolutely dissatisfied with their life. The overall average is 4.14 out of 5.
- There is no noticeable difference in results when the gender of the respondent is taken into account.
- The elderly (66+) are the least satisfied with their life, an average of 4.06 out of 5. On the other hand, respondents aged between 36-45 are the ones who are mostly satisfied with their life (an average of 4.26).
- Those respondents who are married are more satisfied with their life than those who do not live with their partner (4.22 – married vs 4.04 – not living with a partner).
- Respondents with the lowest level of education are the ones who are least satisfied with their life (an average of 4.09 out of 5).
- Inactive respondents are the least satisfied with their life (4.04 out of 5).
- Respondents residing in the Southern harbour are the most satisfied with their life (an average of 4.30 out of 5 respectively).

From 1 to 5, where 1 means 'absolutely dissatisfied' and 5 means 'very satisfied', in general, how satisfied are you with your life?



A Study about various themes in Malta

	Average:		Average:
Female	4.16	Full-time employed	4.18
Male	4.12	Part-time employed	4.10
		Self-employed	4.08
16-25	4.21	Inactive	4.04
26-35	4.07	Homemaker/carer full-time	4.38
36-45	4.26	Retired	4.07
46-55	4.17		
56-65	4.15	<i>Income tax bracket</i>	
66+	4.06	0%	4.10
Married	4.22	15%	4.17
Not living with a partner	4.04	25%	4.16
		35%	4.20
Primary	4.09	Southern Harbour	4.30
Secondary	4.11	Northern Harbour	4.06
Post secondary	4.23	South Eastern	4.01
Tertiary	4.12	Western	4.14
		Northern	4.25
		Gozo and Comino	4.10

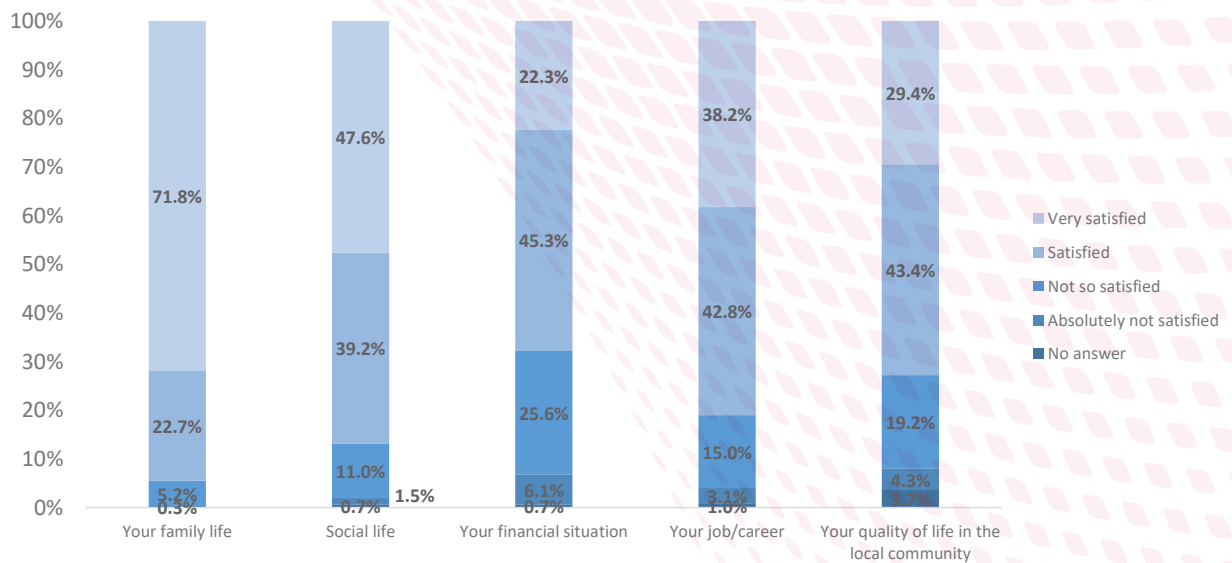
SECTION 7.2 – SATISFACTION LEVEL FOR DIFFERENT ASPECTS IN YOUR LIFE

The following five different aspects were presented to the respondents and they were asked about how satisfied they are with:

- Your family life
- Social life
- Your financial situation
- Your job/career
- Your quality of life in the local community
- Respondents are the most satisfied with their family life – 71.8% (very satisfied).
- Only 22.3% of the respondents are very satisfied with their financial situation.

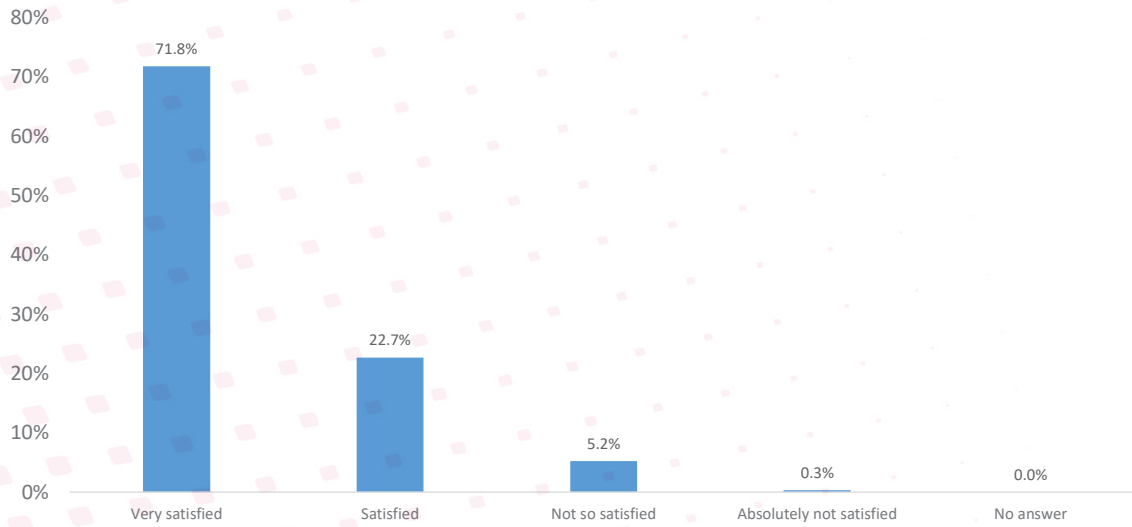
In the following pages, results by different demographics are presented for each aspect.

Please indicate how satisfied you are with your life with the following:



A Study about various themes in Malta

Please indicate how satisfied you are with your life with the following: Your family life



	Female	Male
Very satisfied	75.9%	67.1%
Satisfied	18.4%	27.6%
Not so satisfied	5.7%	4.7%
Absolutely not satisfied	0.0%	0.7%
No answer	0.0%	0.0%

	16-25	26-35	36-45	46-55	56-65	66+
Very satisfied	54.2%	65.5%	77.6%	81.8%	78.0%	74.8%
Satisfied	29.2%	25.9%	22.4%	18.2%	18.7%	21.4%
Not so satisfied	16.7%	8.6%	0.0%	0.0%	2.4%	2.9%
Absolutely not satisfied	0.0%	0.0%	0.0%	0.0%	0.8%	1.0%
No answer	0.0%	0.0%	0.0%	0.0%	0.0%	0.0%

	Married	Not in a relationship
Very satisfied	81.2%	59.1%
Satisfied	17.3%	29.3%
Not so satisfied	1.3%	11.0%
Absolutely not satisfied	0.2%	0.5%
No answer	0.0%	0.0%



	Primary	Secondary	Post-secondary	Tertiary
Very satisfied	74.3%	82.9%	55.9%	65.3%
Satisfied	21.4%	13.5%	35.5%	27.0%
Not so satisfied	4.3%	2.8%	8.5%	7.7%
Absolutely not satisfied	0.0%	0.7%	0.0%	0.0%
No answer	0.0%	0.0%	0.0%	0.0%

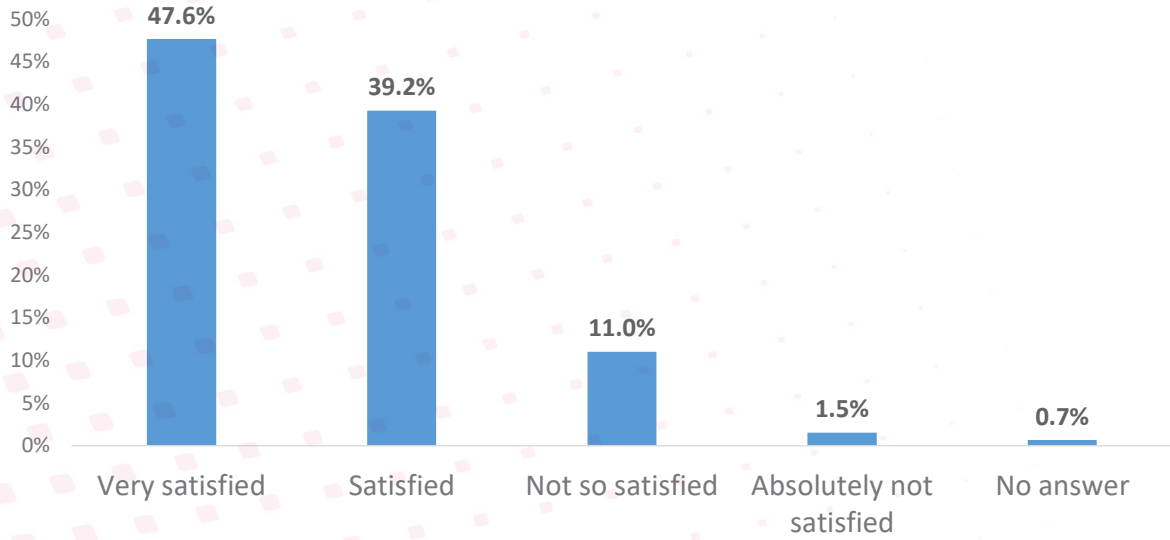
	Full-time employed	Part-time employed	Self-employed	Inactive	Homemaker/carers full-time	Retired
Very satisfied	68.7%	68.7%	80.0%	36.2%	86.1%	78.1%
Satisfied	25.6%	24.1%	20.0%	38.3%	13.9%	17.7%
Not so satisfied	5.4%	7.2%	0.0%	25.5%	0.0%	3.4%
Absolutely not satisfied	0.3%	0.0%	0.0%	0.0%	0.0%	0.8%
No answer	0.0%	0.0%	0.0%	0.0%	0.0%	0.0%

	0%	15%	25%	35%
Very satisfied	73.6%	64.6%	74.7%	46.7%
Satisfied	21.2%	28.0%	20.8%	53.3%
Not so satisfied	5.2%	7.3%	3.9%	0.0%
Absolutely not satisfied	0.0%	0.0%	0.6%	0.0%
No answer	0.0%	0.0%	0.0%	0.0%

	Southern Harbour	Northern Harbour	South Eastern	Western	Northern	Gozo and Comino
Very satisfied	72.3%	72.8%	72.4%	74.8%	59.6%	82.5%
Satisfied	22.1%	25.5%	25.3%	10.3%	32.5%	17.5%
Not so satisfied	5.6%	1.7%	0.6%	14.8%	7.9%	0.0%
Absolutely not satisfied	0.0%	0.0%	1.7%	0.0%	0.0%	0.0%
No answer	0.0%	0.0%	0.0%	0.0%	0.0%	0.0%

A Study about various themes in Malta

Please indicate how satisfied you are with your life with the following: Social life



	Female	Male
Very satisfied	48.7%	46.4%
Satisfied	34.2%	45.0%
Not so satisfied	14.5%	7.0%
Absolutely not satisfied	1.6%	1.4%
No answer	1.0%	0.2%

	16-25	26-35	36-45	46-55	56-65	66+
Very satisfied	62.5%	34.5%	50.0%	42.9%	50.0%	49.0%
Satisfied	25.0%	51.7%	36.2%	45.5%	37.1%	36.9%
Not so satisfied	12.5%	10.3%	13.8%	9.1%	9.7%	11.2%
Absolutely not satisfied	0.0%	3.4%	0.0%	2.6%	0.8%	1.5%
No answer	0.0%	0.0%	0.0%	0.0%	2.4%	1.5%

	Married	Not in a relationship
Very satisfied	51.0%	43.3%
Satisfied	37.0%	41.1%
Not so satisfied	9.3%	14.0%
Absolutely not satisfied	1.5%	1.6%
No answer	1.1%	0.0%



	Primary	Secondary	Post-secondary	Tertiary
Very satisfied	54.3%	52.6%	40.1%	42.3%
Satisfied	32.9%	32.9%	42.9%	50.5%
Not so satisfied	11.4%	11.8%	13.7%	6.6%
Absolutely not satisfied	0.0%	1.7%	3.3%	0.0%
No answer	1.4%	0.9%	0.0%	0.5%

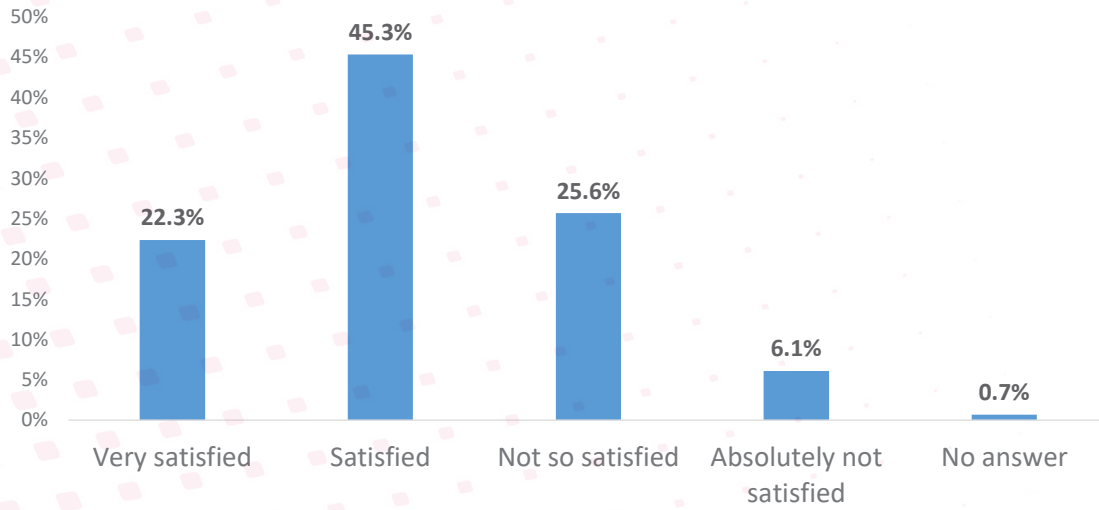
	Full-time employed	Part-time employed	Self-employed	Inactive	Homemaker/carer full-time	Retired
Very satisfied	46.4%	56.6%	42.0%	38.3%	37.5%	51.7%
Satisfied	40.3%	22.9%	58.0%	59.6%	41.7%	35.5%
Not so satisfied	10.8%	20.5%	0.0%	2.1%	15.3%	10.6%
Absolutely not satisfied	2.6%	0.0%	0.0%	0.0%	0.0%	1.5%
No answer	0.0%	0.0%	0.0%	0.0%	5.6%	0.8%

	0%	15%	25%	35%
Very satisfied	52.0%	44.5%	51.9%	20.0%
Satisfied	36.7%	40.2%	35.7%	80.0%
Not so satisfied	9.5%	12.8%	8.4%	0.0%
Absolutely not satisfied	0.3%	2.4%	3.9%	0.0%
No answer	1.5%	0.0%	0.0%	0.0%

	Southern Harbour	Northern Harbour	South Eastern	Western	Northern	Gozo and Comino
Very satisfied	57.4%	45.6%	43.7%	42.6%	46.1%	52.5%
Satisfied	31.8%	38.9%	50.6%	38.7%	36.5%	37.5%
Not so satisfied	10.3%	13.8%	4.6%	14.2%	14.8%	2.5%
Absolutely not satisfied	0.5%	1.3%	1.1%	3.2%	2.6%	0.0%
No answer	0.0%	0.4%	0.0%	1.3%	0.0%	7.5%

A Study about various themes in Malta

Please indicate how satisfied you are with your life with the following: Your financial situation



	Female	Male
Very satisfied	21.7%	23.0%
Satisfied	43.6%	47.3%
Not so satisfied	27.7%	23.3%
Absolutely not satisfied	7.0%	5.0%
No answer	0.0%	1.4%

	16-25	26-35	36-45	46-55	56-65	66+
Very satisfied	32.6%	19.0%	15.5%	22.1%	21.7%	22.7%
Satisfied	37.0%	50.0%	46.6%	41.6%	48.3%	47.3%
Not so satisfied	17.4%	25.9%	29.3%	29.9%	26.7%	25.1%
Absolutely not satisfied	8.7%	5.2%	8.6%	6.5%	3.3%	4.9%
No answer	4.3%	0.0%	0.0%	0.0%	0.0%	0.0%

	Married	Not in a relationship
Very satisfied	24.2%	20.8%
Satisfied	43.7%	47.5%
Not so satisfied	27.3%	23.0%
Absolutely not satisfied	4.8%	7.1%
No answer	0.0%	1.6%



	Primary	Secondary	Post-secondary	Tertiary
Very satisfied	20.3%	23.3%	16.5%	28.6%
Satisfied	47.8%	41.8%	41.7%	51.5%
Not so satisfied	27.5%	23.8%	35.9%	19.9%
Absolutely not satisfied	4.3%	11.1%	2.9%	0.0%
No answer	0.0%	0.0%	2.9%	0.0%

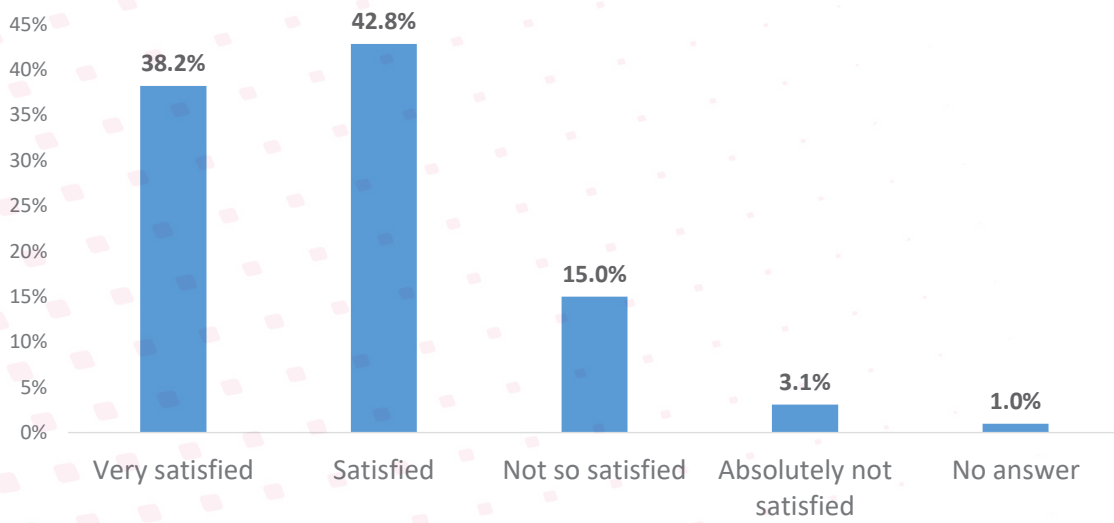
	Full-time employed	Part-time employed	Self-employed	Inactive	Homemaker/carer full-time	Retired
Very satisfied	25.3%	26.5%	10.0%	8.5%	14.3%	22.7%
Satisfied	42.7%	45.8%	80.0%	31.9%	44.3%	45.8%
Not so satisfied	28.1%	13.3%	4.0%	34.0%	34.3%	26.2%
Absolutely not satisfied	3.9%	14.5%	6.0%	12.8%	7.1%	5.4%
No answer	0.0%	0.0%	0.0%	12.8%	0.0%	0.0%

	0%	15%	25%	35%
Very satisfied	31.5%	17.3%	16.9%	73.3%
Satisfied	39.5%	49.4%	45.9%	13.3%
Not so satisfied	18.2%	24.1%	35.8%	13.3%
Absolutely not satisfied	9.0%	9.3%	1.4%	0.0%
No answer	1.9%	0.0%	0.0%	0.0%

	Southern Harbour	Northern Harbour	South Eastern	Western	Northern	Gozo and Comino
Very satisfied	26.8%	17.7%	20.7%	28.1%	20.9%	16.2%
Satisfied	43.8%	47.4%	46.6%	40.5%	49.6%	40.5%
Not so satisfied	20.6%	31.0%	22.4%	21.6%	27.8%	43.2%
Absolutely not satisfied	5.7%	3.9%	10.3%	9.8%	1.7%	0.0%
No answer	3.1%	0.0%	0.0%	0.0%	0.0%	0.0%

A Study about various themes in Malta

Please indicate how satisfied you are with your life with the following: Your job/career



	Female	Male
Very satisfied	32.6%	42.7%
Satisfied	47.2%	39.2%
Not so satisfied	11.6%	17.7%
Absolutely not satisfied	6.4%	0.3%
No answer	2.1%	0.0%

	16-25	26-35	36-45	46-55	56-65	66+
Very satisfied	45.9%	41.5%	25.5%	38.6%	27.0%	66.7%
Satisfied	27.0%	45.3%	57.4%	43.9%	40.5%	33.3%
Not so satisfied	21.6%	9.4%	12.8%	15.8%	24.3%	0.0%
Absolutely not satisfied	5.4%	1.9%	4.3%	0.0%	8.1%	0.0%
No answer	0.0%	1.9%	0.0%	1.8%	0.0%	0.0%

	Married	Not in a relationship
Very satisfied	41.3%	37.9%
Satisfied	40.5%	42.9%
Not so satisfied	15.7%	14.9%
Absolutely not satisfied	1.7%	3.1%
No answer	0.8%	1.1%



	Primary	Secondary	Post-secondary	Tertiary
Very satisfied	0.0%	44.8%	29.3%	43.1%
Satisfied	60.0%	38.3%	41.5%	45.6%
Not so satisfied	40.0%	8.7%	29.3%	7.5%
Absolutely not satisfied	0.0%	5.5%	0.0%	3.8%
No answer	0.0%	2.7%	0.0%	0.0%

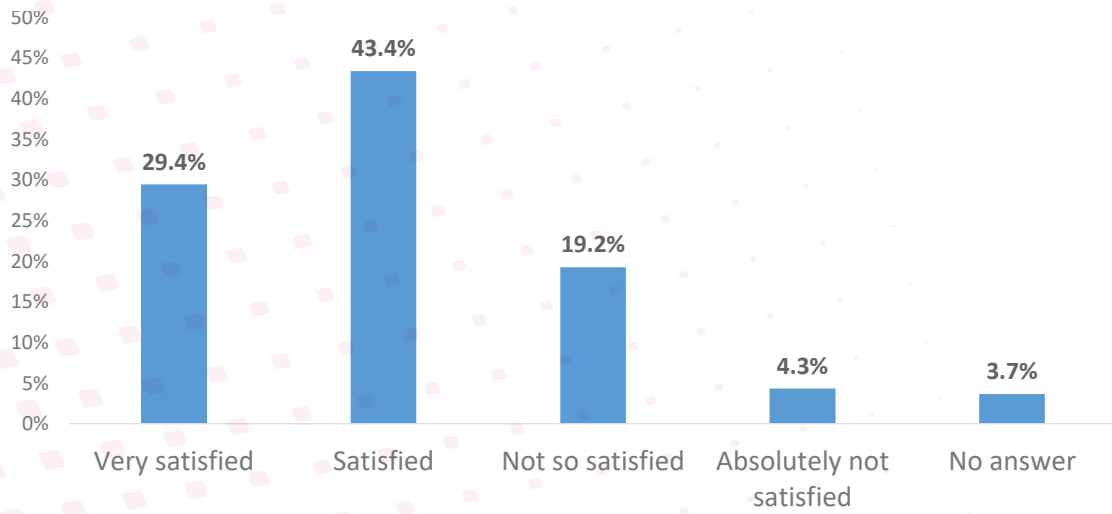
	Full-time employed	Part-time employed	Self-employed	Inactive	Homemaker/carer full-time	Retired
Very satisfied	34.4%	42.2%	63.8%			
Satisfied	47.0%	32.5%	27.7%			
Not so satisfied	14.9%	19.3%	8.5%			
Absolutely not satisfied	2.8%	6.0%	0.0%			
No answer	0.8%	0.0%	0.0%			

	0%	15%	25%	35%
Very satisfied	30.3%	36.5%	48.0%	73.3%
Satisfied	29.3%	48.6%	40.7%	26.7%
Not so satisfied	32.3%	8.1%	9.3%	0.0%
Absolutely not satisfied	6.1%	4.7%	2.0%	0.0%
No answer	2.0%	2.0%	0.0%	0.0%

	Southern Harbour	Northern Harbour	South Eastern	Western	Northern	Gozo and Comino
Very satisfied	55.8%	23.7%	34.6%	39.2%	27.5%	57.9%
Satisfied	29.2%	45.2%	48.6%	40.2%	56.3%	42.1%
Not so satisfied	10.0%	25.8%	13.1%	17.6%	12.5%	0.0%
Absolutely not satisfied	3.3%	5.4%	3.7%	0.0%	3.8%	0.0%
No answer	1.7%	0.0%	0.0%	2.9%	0.0%	0.0%

A Study about various themes in Malta

Please indicate how satisfied you are with your life with the following: Your quality of life in the local community



	Female	Male
Very satisfied	27.9%	31.1%
Satisfied	44.9%	41.7%
Not so satisfied	18.7%	19.9%
Absolutely not satisfied	3.8%	4.9%
No answer	4.8%	2.3%

	16-25	26-35	36-45	46-55	56-65	66+
Very satisfied	40.4%	25.9%	23.6%	38.2%	23.4%	25.1%
Satisfied	36.2%	46.6%	38.2%	38.2%	51.6%	47.3%
Not so satisfied	8.5%	17.2%	32.7%	18.4%	19.4%	21.7%
Absolutely not satisfied	8.5%	3.4%	1.8%	5.3%	2.4%	3.9%
No answer	6.4%	6.9%	3.6%	0.0%	3.2%	2.0%

	Married	Not in a relationship
Very satisfied	27.1%	32.2%
Satisfied	43.8%	42.8%
Not so satisfied	23.1%	13.8%
Absolutely not satisfied	3.3%	6.0%
No answer	2.7%	5.1%



	Primary	Secondary	Post-secondary	Tertiary
Very satisfied	27.1%	36.0%	19.3%	28.5%
Satisfied	55.7%	40.1%	49.5%	36.8%
Not so satisfied	15.7%	17.5%	13.7%	30.6%
Absolutely not satisfied	0.0%	3.2%	10.8%	1.6%
No answer	1.4%	3.2%	6.6%	2.6%

	Full-time employed	Part-time employed	Self-employed	Inactive	Homemaker/carer full-time	Retired
Very satisfied	26.9%	56.8%	30.0%	38.3%	22.7%	24.8%
Satisfied	43.4%	28.4%	42.0%	29.8%	50.0%	50.0%
Not so satisfied	19.6%	2.5%	22.0%	19.1%	25.8%	21.4%
Absolutely not satisfied	5.4%	12.3%	0.0%	0.0%	0.0%	2.7%
No answer	4.7%	0.0%	6.0%	12.8%	1.5%	1.1%

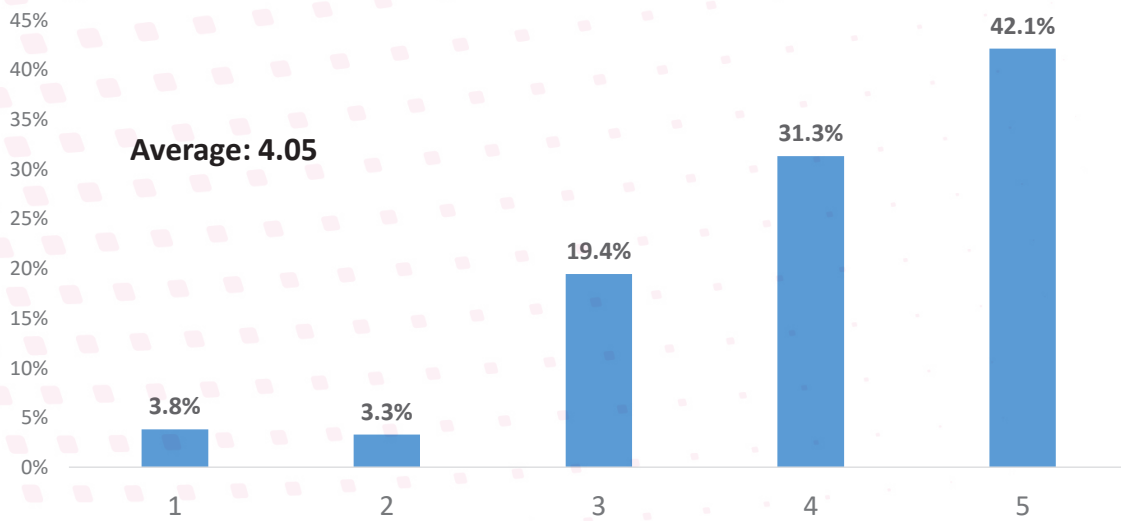
	0%	15%	25%	35%
Very satisfied	32.2%	33.5%	34.4%	20.0%
Satisfied	39.9%	43.3%	34.4%	53.3%
Not so satisfied	20.2%	15.9%	12.6%	13.3%
Absolutely not satisfied	3.1%	3.7%	11.9%	0.0%
No answer	4.6%	3.7%	6.6%	13.3%

	Southern Harbour	Northern Harbour	South Eastern	Western	Northern	Gozo and Comino
Very satisfied	33.3%	27.3%	22.5%	33.3%	25.9%	47.5%
Satisfied	45.1%	36.8%	53.2%	40.5%	42.0%	45.0%
Not so satisfied	12.8%	22.1%	18.5%	22.2%	25.9%	7.5%
Absolutely not satisfied	5.1%	8.2%	1.2%	0.7%	6.3%	0.0%
No answer	3.6%	5.6%	4.6%	3.3%	0.0%	0.0%

SECTION 7.3 – SATISFACTION LEVEL WITH THE NEIGHBOURHOOD (AREA) WHERE YOU LIVE

- The majority of the respondents (42.1%) are very satisfied with the neighbourhood (area) where they live. The overall average is 4.05 out of 5.
- Female respondents seem to be more satisfied with the area where they live rather than their male counterparts (4.07 – female vs 4.03 – male).
- The elderly (66+) are the most satisfied with their neighbourhood (area), an average of 4.22 out of 5.
- Respondents with the highest level of education are the most satisfied with their neighbourhood (area) (an average of 3.86 out of 5).
- Self-employed respondents are the most satisfied with their neighbourhood (area) (4.30 out of 5).
- Those residing in Northern harbour district are the most satisfied with their neighbourhood (3.89). On the other hand the Gozitans are the most satisfied with their area (4.33).

From 1 to 5, where 1 means 'absolutely dissatisfied' and 5 means 'very satisfied', how satisfied are you with your neighborhood?



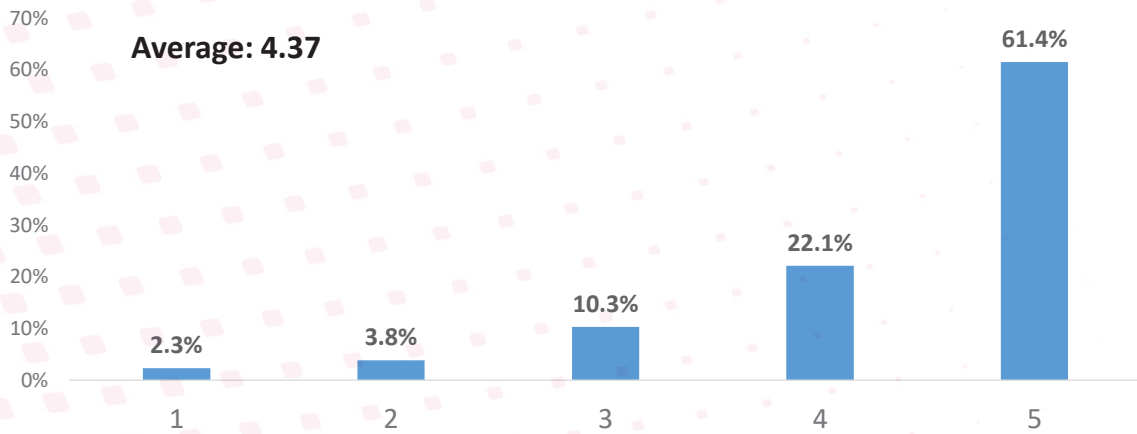


	Average:		Average:
Female	4.07	Full-time employed	3.90
Male	4.03	Part-time employed	4.10
		Self-employed	4.30
16-25	3.96	Inactive	3.62
26-35	3.91	Homemaker/carer full-time	4.26
36-45	4.22	Retired	4.19
46-55	3.90		
56-65	4.08	<i>Income tax bracket</i>	
66+	4.22	0%	3.92
Married	4.08	15%	4.06
Not living with a partner	3.98	25%	4.05
		35%	4.47
Primary	4.13	Southern Harbour	4.12
Secondary	4.18	Northern Harbour	3.89
Post secondary	3.91	South Eastern	4.18
Tertiary	3.86	Western	3.95
		Northern	4.07
		Gozo and Comino	4.33

SECTION 7.4 – HOW SATISFIED ARE YOU WITH YOUR HOUSE?

Over sixty per cent of the respondents are very satisfied with their house. Only 2.3% of the respondents are absolutely dissatisfied with their house. The overall average is 4.37 out of 5.

From 1 to 5, where 1 means ‘absolutely dissatisfied’ and 5 means ‘very satisfied’, how satisfied are you with your home?

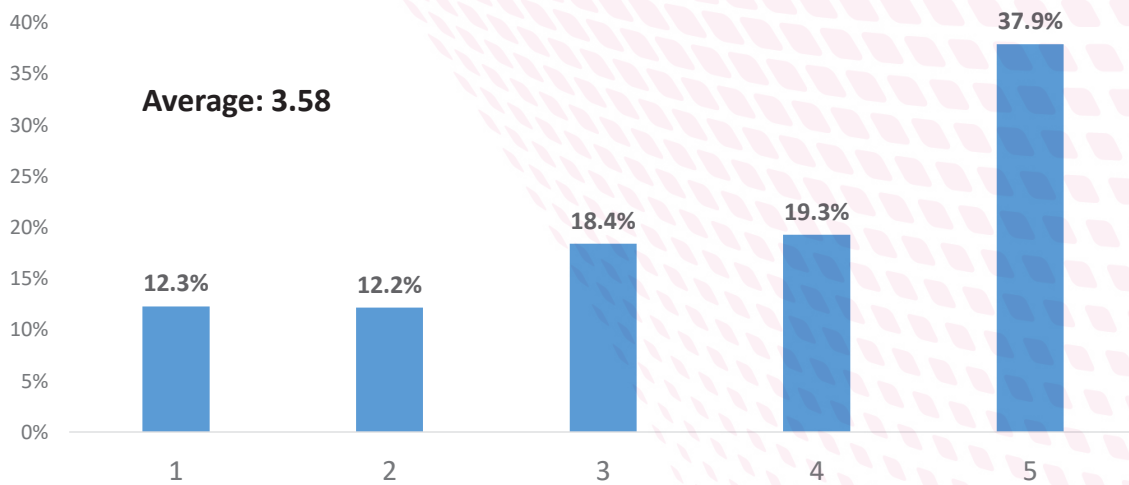


	Average:		Average:
Female	4.39	Full-time employed	4.24
Male	4.34	Part-time employed	4.37
		Self-employed	4.70
16-25	4.02	Inactive	3.28
26-35	4.16	Homemaker/carer full-time	4.68
36-45	4.34	Retired	4.58
46-55	4.57		
56-65	4.42	<i>Income tax bracket</i>	
66+	4.61	0%	4.30
Married	4.54	15%	4.04
Not living with a partner	4.11	25%	4.36
		35%	4.60
Primary	4.40		
Secondary	4.50	Southern Harbour	4.38
Post secondary	4.25	Northern Harbour	4.34
Tertiary	4.21	South Eastern	4.36
		Western	4.30
		Northern	4.30
		Gozo and Comino	4.95

SECTION 7.5 – DO YOU FEEL THAT YOUR NEIGHBOURS TAKE CARE OF EACH OTHER?

- Respondents were asked if they feel that their neighbours take care of each other. More than thirty seven per cent (37.9%) strongly agree that their neighbours take care of each other. Only 12.2% of the respondents absolutely disagree. The overall average is 3.58.
- Female respondents feel that their neighbours take care of each other more than male respondents (3.67 – female vs 3.49 – male).
- Those aged between 46-55 are the ones who mostly think that their neighbours take care of each other (an average of 3.86 out of 5).
- Respondents with the highest level of education are the ones who least think that their neighbours take care of each other, an average of 3.14 out of 5.
- The Gozitans are the ones who mostly think that their neighbours take care of each other (an average of 4.30 out of 5).

From 1 to 5, where 1 means 'absolutely disagree' and 5 means 'strongly agree', do you feel that your neighbours are caring for each other?



A Study about various themes in Malta

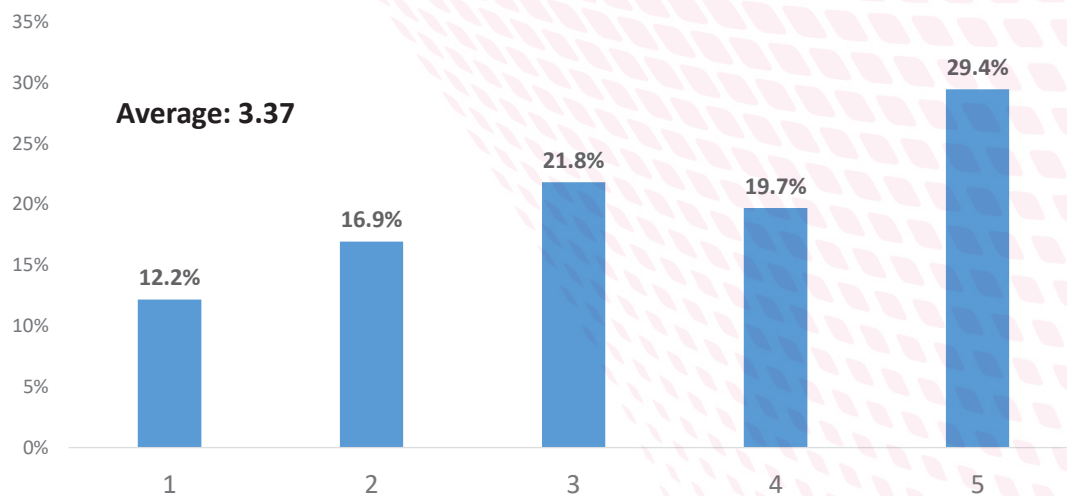
	Average:		Average:
Female	3.67	Full-time employed	3.42
Male	3.49	Part-time employed	3.40
		Self-employed	3.88
16-25	3.33	Inactive	3.09
26-35	3.14	Homemaker/carer full-time	3.80
36-45	3.72	Retired	3.85
46-55	3.86		
56-65	3.71	<i>Income tax bracket</i>	
66+	3.78	0%	3.60
		15%	3.41
Married	3.69	25%	3.43
Not living with a partner	3.45	35%	2.47
Primary	3.74	Southern Harbour	3.86
Secondary	3.78	Northern Harbour	3.37
Post secondary	3.46	South Eastern	3.43
Tertiary	3.14	Western	3.44
		Northern	3.73
		Gozo and Comino	4.30



SECTION 7.6 – WASTE MANAGEMENT

- Three out of ten of the respondents (29.4%) do not consider waste management as a problem. The overall average is 3.37 out of 5 (where 1 means 'very big problem' and 5 means 'not a problem').
- Female respondents consider waste management as a problem more than their male counterpart (3.43 – females vs 3.31 - males).
- Waste management is not considered to be a problem mostly by the young respondents (an average of 3.19 out of 5).
- Respondents with the lowest level of education are the ones who mostly consider waste management as a problem (3.51 out of 5).
- Inactive respondents are the ones who least consider waste management as a problem, an average of 2.98 out of 5.
- Respondents who reside in the Northern district are the ones who mostly consider waste management as a problem (an average of 3.52 out of 5 respectively).

From 1 to 5, where 1 means 'a very big problem' and 5 means 'no problem', is waste management a problem in your area?



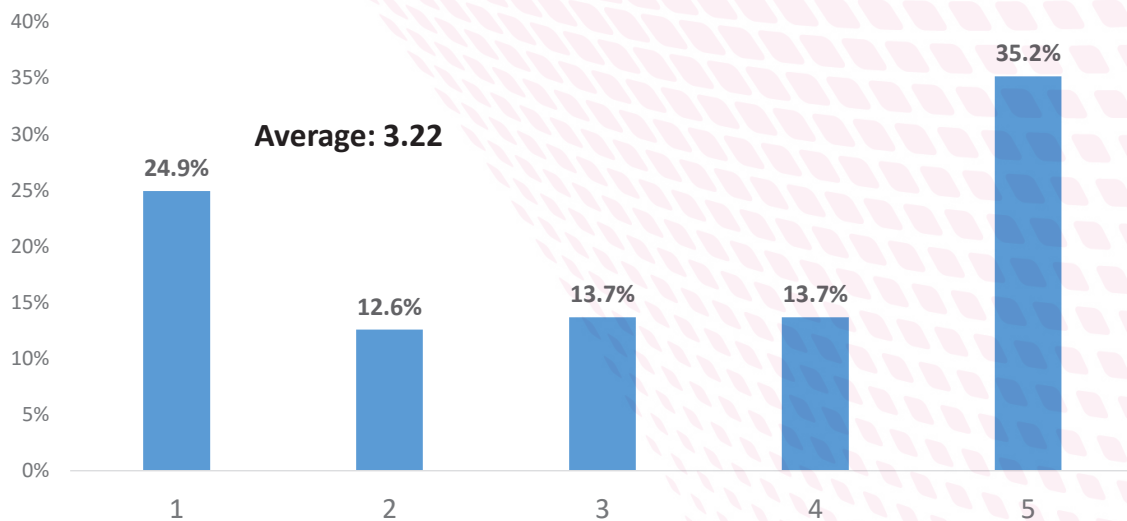
A Study about various themes in Malta

	Average:		Average:
Female	3.43	Full-time employed	3.27
Male	3.31	Part-time employed	3.14
		Self-employed	3.60
16-25	3.19	Inactive	2.98
26-35	3.38	Homemaker/carer full-time	3.66
36-45	3.20	Retired	3.56
46-55	3.52		
56-65	3.43	<i>Income tax bracket</i>	
66+	3.45	0%	3.19
Married	3.39	15%	2.94
Not living with a partner	3.38	25%	3.71
		35%	2.87
Primary	3.51	Southern Harbour	3.49
Secondary	3.47	Northern Harbour	3.38
Post secondary	3.30	South Eastern	3.10
Tertiary	3.22	Western	3.43
		Northern	3.52
		Gozo and Comino	3.29

SECTION 7.7 – TRAFFIC

- A quarter of the respondents consider traffic to be a big problem (24.9%). The overall average is 3.22 out of 5 where 1 means 'very big problem' and 5 means 'not a problem'.
- Female respondents consider traffic as a problem more than their male respondents (3.08 – females vs 3.37 - males).
- Traffic is considered to be a problem mostly by those aged between 56-65 (an average of 2.65 out of 5).
- Respondents who are fulfilling domestic tasks are the ones who mostly consider traffic as a problem, an average of 2.23 out of 5.
- High income earners are the ones who least consider traffic as a problem (2.40 out of 5).
- Respondents who reside in the Western district are the ones who least consider traffic as a problem (an average of 3.68 out of 5 respectively).

From 1 to 5, where 1 means 'a very big problem' and 5 means 'no problem', is traffic a problem in general?



A Study about various themes in Malta

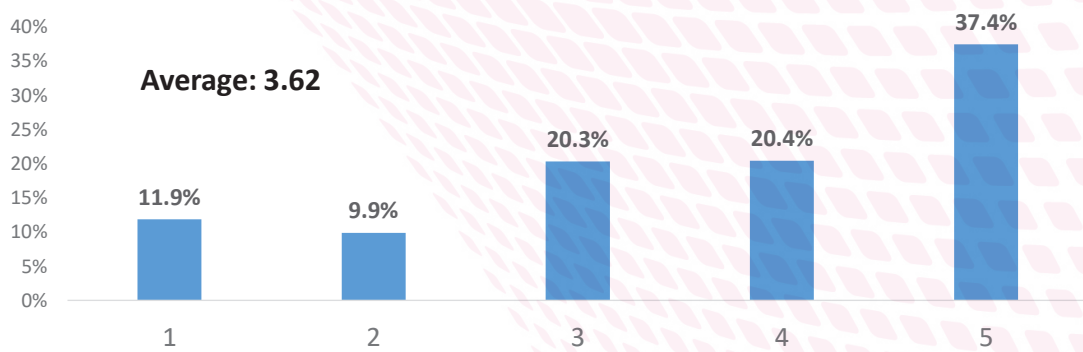
	Average:		Average:
Female	3.08	Full-time employed	3.34
Male	3.37	Part-time employed	3.39
		Self-employed	3.16
16-25	4.04	Inactive	4.09
26-35	3.22	Homemaker/carer full-time	2.23
36-45	3.20	Retired	3.09
46-55	3.08		
56-65	2.65	<i>Income tax bracket</i>	
66+	3.07	0%	3.41
		15%	3.05
Married	3.10	25%	3.36
Not living with a partner	3.37	35%	2.40
Primary	3.36	Southern Harbour	3.33
Secondary	2.99	Northern Harbour	2.96
Post secondary	3.36	South Eastern	3.33
Tertiary	3.41	Western	3.68
		Northern	2.91
		Gozo and Comino	2.61

SECTION 7.8 – THE NECESSITY OF LOCAL COUNCILS

Respondents were asked to state how necessary the Local Councils are in the effective management of their locality from 1 to 5 (where 1 means 'unnecessary' and 5 means 'very necessary'). Over thirty seven per cent (37.4%) stated that Local Councils are very necessary. Only 11.9% of the respondents said that Local Councils are not necessary in the management of their locality. The overall average is 3.62 out of 5.

Respondents were asked to state how necessary the Local Councils are in the effective management of their locality from 1 to 5 (where 1 means 'unnecessary' and 5 means 'very necessary'). Over thirty seven per cent (37.4%) stated that Local Councils are very necessary. Only 11.9% of the respondents said that Local Councils are not necessary in the management of their locality. The overall average is 3.62 out of 5.

From 1 to 5, where 1 means 'unnecessary' and 5 means 'very necessary', how much are Local Councils needed to effectively manage your locality?

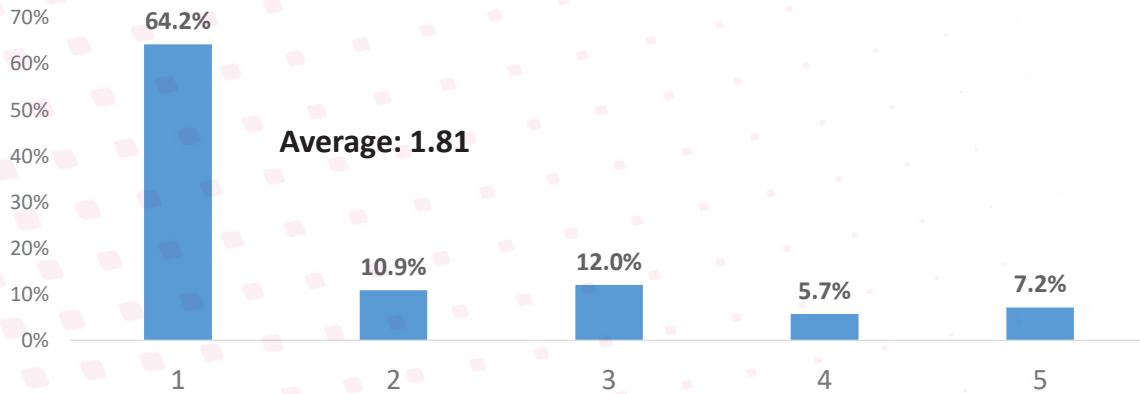


	Average:		Average:
Female	3.71	Full-time employed	3.54
Male	3.51	Part-time employed	3.52
		Self-employed	3.52
16-25	3.35	Inactive	3.49
26-35	3.43	Homemaker/carer full-time	3.72
36-45	3.88	Retired	3.76
46-55	3.68		
56-65	3.72	<i>Income tax bracket</i>	
66+	3.69	0%	3.37
		15%	3.52
Married	3.73	25%	3.86
Not living with a partner	3.46	35%	4.07
Primary	3.68	Southern Harbour	3.78
Secondary	3.60	Northern Harbour	3.65
Post secondary	3.77	South Eastern	3.57
Tertiary	3.46	Western	3.18
		Northern	3.82
		Gozo and Comino	3.98

SECTION 7.9 – INVOLVING YOURSELF IN THE ACTIVITIES OF THE LOCAL COUNCIL

Almost sixty five per cent of the respondents (64.2%) stated that they are not involved in the activities organised by their Local Council. Only 7.2% of the respondents said that they are very involved. The overall average is 1.81 out of 5.

From 1 to 5, where 1 means ‘not involved’ and 5 means ‘very involved’, how much do you consider to be involved in the activities organised by your local council?

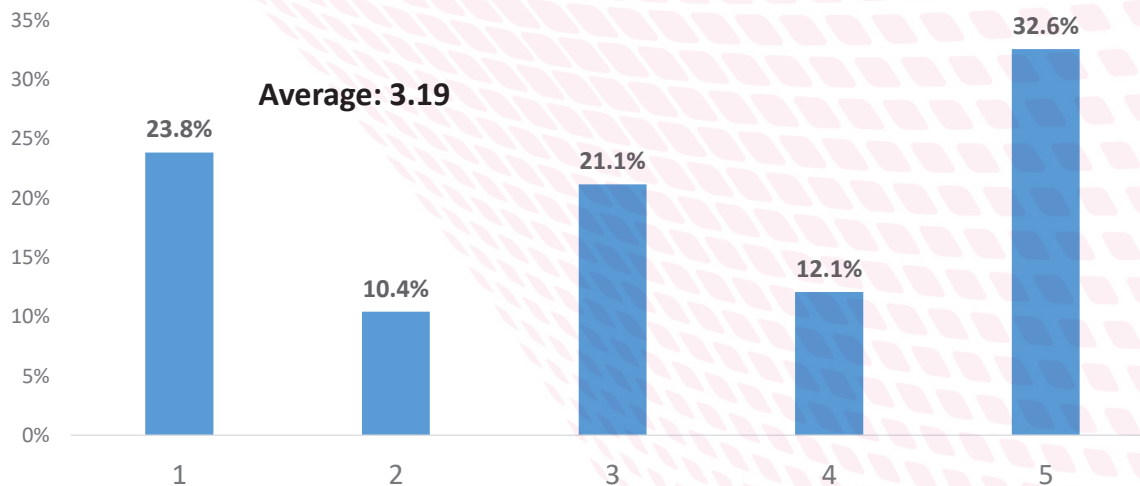


	Average:		Average:
Female	1.72	Full-time employed	1.88
Male	1.91	Part-time employed	1.96
		Self-employed	1.54
16-25	2.23	Inactive	2.17
26-35	1.90	Homemaker/carer full-time	1.40
36-45	1.61	Retired	1.76
46-55	1.61		
56-65	1.76	<i>Income tax bracket</i>	
66+	1.71	0%	2.00
Married	1.72	15%	1.85
Not living with a partner	1.94	25%	1.62
		35%	2.07
Primary	1.85	Southern Harbour	1.84
Secondary	1.81	Northern Harbour	1.74
Post secondary	1.80	South Eastern	1.86
Tertiary	1.78	Western	1.83
		Northern	1.74
		Gozo and Comino	1.93

SECTION 7.10 – NOISE IN YOUR AREA

- Nearly one-third of the respondents said that they did not have noise problems in their area in the past month (32.6%). However, 23.8% of the respondents said that they have a big problem. The overall average is 3.19 out of 5.
- Respondents aged between 56-65 are the ones who mostly said that there is a problem of noise in their area (an average of 3.29 out of 5).
- The Gozitans are the ones who least find noise as a problem in their area. On the other hand, respondents residing in the Northern district are the ones who mostly claimed that they have noise problems (2.80 – Gozo and 3.43 – Northern district).

From 1 to 5, where 1 means 'very uncomfortable' and 5 means 'very comfortable', how much do you feel uncomfortable with the noise in your neighbourhood this past month?



	Average:		Average:
Female	3.22	Full-time employed	3.18
Male	3.16	Part-time employed	2.72
		Self-employed	3.42
16-25	3.21	Inactive	3.80
26-35	3.25	Homemaker/carer full-time	3.66
36-45	3.21	Retired	3.12
46-55	3.11		
56-65	3.29	<i>Income tax bracket</i>	
66+	3.13	0%	3.04
		15%	3.19
Married	3.14	25%	3.49
Not living with a partner	3.29	35%	2.73
Primary	2.94	Southern Harbour	3.23
Secondary	3.37	Northern Harbour	3.26
Post secondary	3.27	South Eastern	3.21
Tertiary	2.84	Western	2.94
		Northern	3.43
		Gozo and Comino	2.80

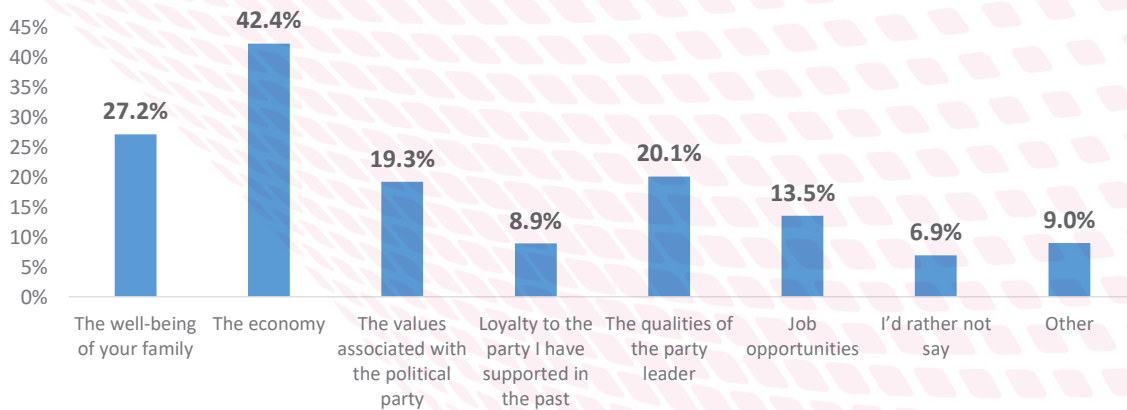


Section 8 Politics

SECTION 8.1 – FACTORS YOU CONSIDER WHEN CHOOSING A POLITICAL PARTY

Respondents had to choose different factors which they consider the most important when deciding which political party they are going to vote for. The most important factor for the respondents is the economy (42.2%). This is followed by “the well-being of their family” by 27.2%.

When deciding which political party to vote for, which of the following factors do you consider the most important?



	Female	Male
The well-being of your family	28.5%	25.6%
The economy	38.5%	46.6%
The values associated with the political party	21.7%	16.6%
Loyalty to the party I have supported in the past	10.6%	7.0%
The qualities of the party leader	20.6%	19.6%
Job opportunities	15.2%	11.7%
I'd rather not say	8.1%	5.6%
Other	6.3%	12.1%

	16-25	26-35	36-45	46-55	56-65	66+
The well-being of your family	25.0%	27.6%	35.7%	37.3%	22.0%	19.4%
The economy	56.3%	58.6%	42.9%	37.3%	31.7%	28.6%
The values associated with the political party	16.7%	15.5%	19.6%	24.0%	18.7%	20.9%
Loyalty to the party I have supported in the past	4.2%	0.0%	7.1%	13.3%	16.3%	13.1%
The qualities of the party leader	8.3%	15.5%	17.9%	26.7%	19.5%	29.1%
Job opportunities	8.3%	20.7%	21.4%	16.0%	8.1%	8.3%
I'd rather not say	4.2%	1.7%	12.5%	6.7%	8.9%	9.2%
Other	8.3%	15.5%	3.6%	5.3%	8.9%	9.7%

A Study about various themes in Malta

	Married	Not in a relationship
The well-being of your family	25.4%	30.0%
The economy	36.7%	50.3%
The values associated with the political party	19.0%	20.5%
Loyalty to the party I have supported in the past	12.3%	4.6%
The qualities of the party leader	23.1%	16.8%
Job opportunities	12.1%	16.2%
I'd rather not say	7.5%	6.5%
Other	9.0%	7.6%

	Primary	Secondary	Post-secondary	Tertiary
The well-being of your family	17.1%	32.4%	21.7%	23.5%
The economy	30.0%	32.7%	52.4%	53.6%
The values associated with the political party	11.4%	16.9%	15.1%	32.1%
Loyalty to the party I have supported in the past	15.7%	12.1%	4.2%	5.1%
The qualities of the party leader	18.6%	20.3%	21.2%	18.4%
Job opportunities	10.0%	12.1%	16.0%	16.3%
I'd rather not say	17.1%	6.1%	7.1%	4.6%
Other	4.3%	6.5%	15.1%	10.2%

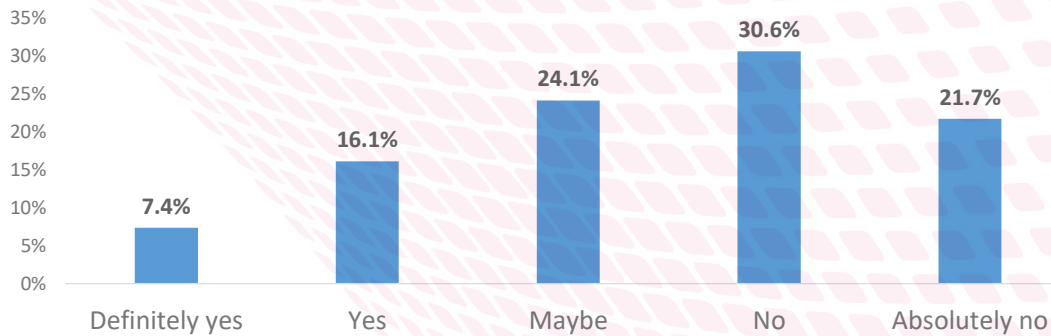
	Southern Harbour	Northern Harbour	South Eastern	Western	Northern	Gozo and Comino
The well-being of your family	31.1%	31.1%	17.2%	17.8%	41.7%	22.5%
The economy	32.1%	45.5%	51.7%	44.1%	46.1%	15.0%
The values associated with the political party	15.0%	14.0%	19.0%	23.0%	33.0%	17.5%
Loyalty to the party I have supported in the past	11.4%	9.8%	7.5%	7.2%	7.8%	7.5%
The qualities of the party leader	15.5%	24.3%	21.8%	13.8%	28.7%	10.0%
Job opportunities	8.8%	14.5%	6.9%	18.4%	22.6%	15.0%
I'd rather not say	5.2%	5.5%	6.9%	7.2%	7.8%	20.0%
Other	10.4%	9.4%	7.5%	12.5%	0.0%	20.0%



SECTION 8.2 – WHAT IF YOUR PREFERRED PARTY IS INVOLVED IN A CORRUPTION SCANDAL?

- It is interesting to note that the majority of the respondents will not vote to their preferred party if it is involved in a corruption scandal. Only 7.3% of the respondents said that they will definitely vote for the party.
- In the following pages, these results are shown by different demographics of the respondents.

If your preferred party is involved in a corruption scandal, will you still vote for it?



	Female	Male
Definitely yes	6.0%	8.9%
Yes	16.1%	16.2%
Maybe	21.9%	26.7%
No	33.7%	27.2%
Absolutely no	22.3%	21.1%

	16-25	26-35	36-45	46-55	56-65	66+
Definitely yes	10.4%	8.6%	7.0%	7.8%	2.5%	6.9%
Yes	22.9%	17.2%	21.1%	6.5%	14.0%	16.2%
Maybe	33.3%	25.9%	19.3%	18.2%	28.9%	20.6%
No	29.2%	22.4%	22.8%	42.9%	37.2%	29.9%
Absolutely no	4.2%	25.9%	29.8%	24.7%	17.4%	26.5%

	Married	Not in a relationship
Definitely yes	5.8%	10.0%
Yes	19.6%	11.9%
Maybe	21.9%	25.9%
No	29.8%	32.3%
Absolutely no	23.0%	19.9%

A Study about various themes in Malta

	Primary	Secondary	Post-secondary	Tertiary
Definitely yes	14.5%	7.7%	1.9%	7.7%
Yes	18.8%	17.9%	19.8%	7.7%
Maybe	24.6%	19.6%	28.3%	28.4%
No	20.3%	36.1%	25.0%	30.9%
Absolutely no	21.7%	18.7%	25.0%	25.3%

	Full-time employed	Part-time employed	Self-employed	Inactive	Homemaker/carer full-time	Retired
Definitely yes	7.0%	12.0%	12.0%	0.0%	0.0%	8.4%
Yes	18.8%	15.7%	4.0%	19.1%	12.7%	15.3%
Maybe	25.5%	20.5%	24.0%	44.7%	22.5%	19.9%
No	25.3%	44.6%	40.0%	21.3%	40.8%	31.4%
Absolutely no	23.5%	7.2%	20.0%	14.9%	23.9%	24.9%

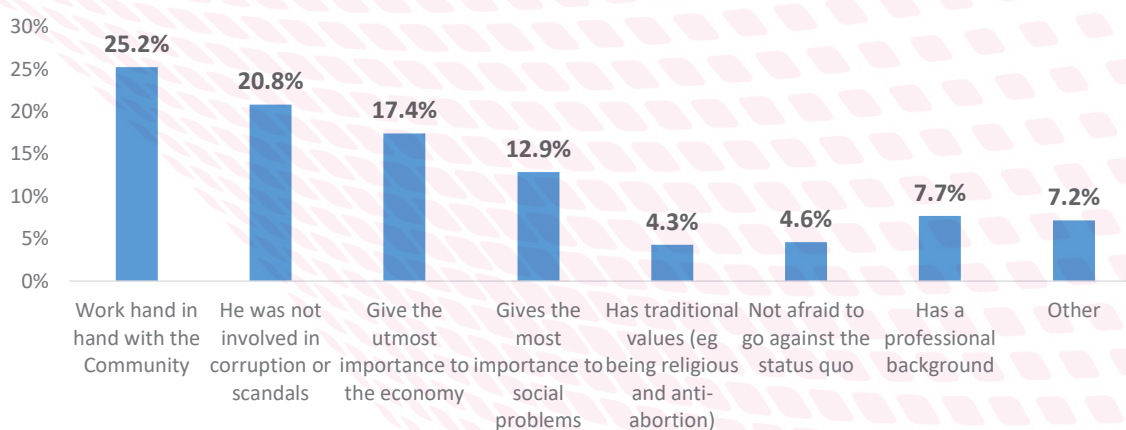
	0%	15%	25%	35%
Definitely yes	8.9%	10.4%	2.6%	0.0%
Yes	19.9%	23.2%	15.6%	0.0%
Maybe	20.5%	27.4%	23.4%	46.7%
No	33.6%	20.7%	29.2%	26.7%
Absolutely no	17.1%	18.3%	29.2%	26.7%

	Southern Harbour	Northern Harbour	South Eastern	Western	Northern	Gozo and Comino
Definitely yes	15.4%	4.2%	4.0%	5.8%	4.5%	15.0%
Yes	13.3%	18.1%	15.6%	16.2%	21.4%	5.0%
Maybe	20.5%	24.1%	24.3%	22.7%	32.1%	25.0%
No	33.8%	31.6%	31.2%	29.2%	25.0%	27.5%
Absolutely no	16.9%	21.9%	24.9%	26.0%	17.0%	27.5%

SECTION 8.3 – THE IDEAL POLITICIAN

Respondents were asked to continue the following sentence: I trust a politician who ... The most chosen phrase to continue this sentence was Work hand in hand with the community (25.2%). This is followed by He was not involved in corruption or scandals, 20.8%.

Which of the following do you choose to continue the sentence? I trust a politician who ...



	Female	Male
Work hand in hand with the Community	30.4%	19.2%
He was not involved in corruption or scandals	20.5%	21.1%
Gives the utmost importance to the economy	14.9%	20.2%
Gives the most importance to social problems	10.4%	15.7%
Has traditional values (eg being religious and anti-abortion)	5.8%	2.6%
Not afraid to go against the status quo	3.5%	5.9%
Has a professional background	7.7%	7.7%
Other	6.8%	7.5%

	16-25	26-35	36-45	46-55	56-65	66+
Work hand in hand with the Community	33.3%	29.3%	20.7%	19.7%	23.1%	23.8%
He was not involved in corruption or scandals	12.5%	20.7%	27.6%	21.1%	17.4%	24.8%
Gives the utmost importance to the economy	25.0%	17.2%	19.0%	18.4%	12.4%	13.4%
Gives the most importance to social problems	12.5%	17.2%	8.6%	15.8%	12.4%	9.9%
Has traditional values (e.g. being religious and anti-abortion)	4.2%	0.0%	3.4%	1.3%	8.3%	8.4%
Not afraid to go against the status quo	4.2%	5.2%	3.4%	7.9%	5.8%	2.0%
Has a professional background	0.0%	8.6%	6.9%	9.2%	12.4%	8.9%
Other	8.3%	1.7%	10.3%	6.6%	8.3%	8.9%

A Study about various themes in Malta

	Married	Not in a relationship
Work hand in hand with the Community	25.2%	24.1%
He was not involved in corruption or scandals	22.3%	17.6%
Give the utmost importance to the economy	16.7%	18.9%
Gives the most importance to social problems	11.5%	15.4%
Has traditional values (eg being religious and anti-abortion)	5.2%	3.2%
Not afraid to go against the status quo	3.8%	5.7%
Has a professional background	7.1%	8.9%
Other	8.1%	6.2%

	Primary	Secondary	Post-secondary	Tertiary
Work hand in hand with the Community	38.2%	23.6%	28.3%	22.4%
He was not involved in corruption or scandals	13.2%	25.0%	17.5%	18.9%
Give the utmost importance to the economy	8.8%	12.7%	21.2%	20.4%
Gives the most importance to social problems	11.8%	15.6%	12.7%	8.7%
Has traditional values (eg being religious and anti-abortion)	11.8%	6.3%	1.9%	0.5%
Not afraid to go against the status quo	2.9%	1.9%	7.1%	8.7%
Has a professional background	7.4%	8.2%	2.8%	12.8%
Other	5.9%	6.7%	8.5%	7.7%

	Full-time employed	Part-time employed	Self-employed	Homemaker/Inactive	Full-time carer	Retired
Work hand in hand with the Community	27.0%	38.3%	10.0%	12.8%	19.4%	23.6%
He was not involved in corruption or scandals	20.6%	13.6%	30.0%	17.0%	26.4%	20.8%
Gives the utmost importance to the economy	21.3%	21.0%	12.0%	25.5%	6.9%	13.5%
Gives the most importance to social problems	9.0%	12.3%	36.0%	12.8%	19.4%	13.1%
Has traditional values (e.g. being religious and anti-abortion)	1.0%	7.4%	0.0%	0.0%	8.3%	8.9%
Not afraid to go against the status quo	6.4%	0.0%	0.0%	12.8%	4.2%	3.1%
Has a professional background	8.0%	4.9%	6.0%	2.1%	6.9%	10.0%
Other	6.7%	2.5%	6.0%	17.0%	8.3%	6.9%

	0%	15%	25%	35%
Work hand in hand with the Community	25.1%	26.2%	20.1%	13.3%
He was not involved in corruption or scandals	21.7%	18.3%	20.8%	13.3%
Gives the utmost importance to the economy	15.0%	26.2%	20.1%	6.7%
Gives the most importance to social problems	16.2%	11.0%	18.8%	0.0%
Has traditional values (e.g. being religious and anti-abortion)	8.3%	1.2%	1.3%	0.0%
Not afraid to go against the status quo	3.1%	6.1%	3.9%	0.0%
Has a professional background	3.7%	6.7%	9.1%	66.7%
Other	7.0%	4.3%	5.8%	0.0%



	Southern Harbour	Northern Harbour	South Eastern	Western	Northern	Gozo and Comino
Work hand in hand with the Community	18.6%	23.4%	27.0%	33.8%	25.2%	27.5%
He was not involved in corruption or scandals	17.0%	23.4%	23.6%	18.5%	20.0%	22.5%
Give the utmost importance to the economy	14.9%	18.7%	21.3%	15.2%	18.3%	10.0%
Gives the most importance to social problems	22.2%	11.9%	16.7%	5.3%	7.8%	0.0%
Has traditional values (eg being religious and anti-abortion)	5.7%	6.0%	0.0%	6.0%	2.6%	5.0%
Not afraid to go against the status quo	3.1%	4.3%	1.7%	5.3%	5.2%	22.5%
Has a professional background	11.9%	8.1%	4.0%	3.3%	12.2%	5.0%
Other	6.7%	4.3%	5.7%	12.6%	8.7%	7.5%



Appendix



Questionnaire

Stharriġ dwar l-Opinjoniġiet

1. Mistoqsijiet soċjo-demokratiċi

Lokalità _____

Età _____

Sess:

- Raġel
- Mara
- Persuna mhux binarja
- Aġender
- Transġeneru raġel
- Transġeneru mara
- Ġeneru varjanti
- Ohrajn [speċifika] _____
- Nippreferi ma ngħidx

Stat ċivili: Miżżewweġ Single Separat/Divorzjat Annullat Armel

Tfal _____

Livell ta' edukazzjoni:

- Primarja
- Sekondarja
- Post-sekondarja
- MCAST
- Università

Stat ta' impjieg (immarka dawk kollha li japplikaw):

- Impjegat full-time
- Impjegat part-time
- Impjegat għal rasek mingħajr haddiema
- Impjegat għal rasek bil-haddiema
- Student
- Homemaker/carer full-time
- Qiegħed
- Irtirat

Questionnaire

Kategorija ta' taxxa:

- a. 0%
- b. 15%
- c. 25%
- d. 35%

2. **F'gimgha tipika, kemm-il darba tircievi aħbarijiet minn dawn li ġejjin?**

[Wieġeb b'dan li ġej: Fafna drabi kulum/ Darba kuljum/ Ftit granet fil-gimgha/
Forsi darba fil-gimgha/ Qatt]

- Televixin
- Radju
- Pubblikazzjonijiet stampati
- Smartphone, kompjuter jew tablet

3. **Liema waħda minn dawn il-kwistjonijiet hija l-aktar importanti għalik, f'ordni ta' importanza?**

- Tishiħ tal-familji
- Kontroll tal-gholi tal-ħajja
- Żieda fl-opportunitajiet ta' xogħol
- Ffolqien ta' ambjent aktar nadif
- Titjib tal-livelli edukattivi milħuqa
- Immaniġġjar ta' tibdil fil-klima
- Immaniġġjar ta' migrazzjoni
- Kombattiment tal-korruzzjoni
- Ffrug mill-*greylist*
- Tnaqqis tal-kriminalità
- Riforzar tal-ħabs
- Kontroll tal-ippjanar u tal-kostruzzjoni



Questionnaire

Migrazzjoni

4. Minn 1 sa 5, fejn 1 ifisser 'assolutament ma naqbilx' u 5 ifisser 'naqbel hafna', taħseb li l-immigranti jikkontribwixxu sabiex isaħħu lil pajjiżna iktar milli huma ta' piż għal pajjiżna?
5. Minn 1 sa 5, fejn 1 ifisser 'assolutament mhux aċċettabbli' u 5 ifisser 'aċċettabbli hafna', kemm ikun aċċettabbli għalik jekk immigrant Afrikan jiżżewweg lil xi membru tal-familja tiegħek?
6. Minn 1 sa 5, fejn 1 ifisser 'assolutament ma naqbilx' u 5 ifisser 'naqbel hafna', taħseb li l-immigrazzjoni hija l-ikbar raġuni għala l-pagi qed jinżammu baxxi f'Malta?
7. Minn 1 sa 5, fejn 1 ifisser 'assolutament ma naqbilx' u 5 ifisser 'naqbel hafna', ikun tajjeb għalik li xi immigranti joqghodu qrib tad-dar tiegħek?
8. Fl-opinjoni personali tiegħek, tikkunsidra lilek innifsek bħala: Razzist hafna / Ftit razzist / Mhux daqstant razzist / Assolutament mhux razzist?
9. Minn 1 sa 5, fejn 1 ifisser 'assolutament ma naqbilx' u 5 ifisser 'naqbel hafna', taħseb li d-diskriminazzjoni razzjali hija problema f'Malta?

Kriminalità

10. Minn 1 sa 5, fejn 1 ifisser 'assolutament perikoluż' u 5 ifisser 'sikur hafna', kemm tħossok sikur timxi waħdek bil-lejl (wara l-11pm) fil-viċinat tiegħek?
11. Minn 1 sa 5, fejn 1 ifisser 'mhu faċli xejn' u 5 ifisser 'faċli hafna', kemm taħseb li huwa faċli għaż-żgħażaġh f'Malta li jaċċessaw id-droga?
12. Minn 1 sa 5, fejn 1 ifisser 'assolutament mhux effettiv' u 5 ifisser 'estremament effettiv', kemm taħseb li l-Pulizija hija effettiva sabiex tittratta l-problema ta' vjolenza domestika f'Malta?
13. Kemm għandek fiduċja fil-Korp tal-Pulizija ta' Malta, pjuttost hafna, hafna, xi ftit, ftit li xejn?

Governanza

Il-korruzzjoni tirreferi għal uffiċjal elett li jieħu vantaġġ mill-pożizzjoni tiegħu għal skop personali jew politiku.

14. Minn 1 sa 5, fejn 1 ifisser 'mhux importanti' u 5 ifisser 'importanti hafna', kemm taħseb li hija importanti l-għieda kontra l-korruzzjoni?
15. Minn 1 sa 5, fejn 1 ifisser 'assolutament ma naqbilx' u 5 ifisser 'naqbel hafna', tħoss li inti mhallas biżżejjed għall-ammont ta' xogħol li tagħmel?
16. Minn 1 sa 5, fejn 1 ifisser 'assolutament ma naqbilx' u 5 ifisser 'naqbel hafna', taħseb li l-politici eletti huma korrotti?
17. Minn 1 sa 5, fejn 1 ifisser 'assolutament ma naqbilx' u 5 ifisser 'naqbel hafna', taħseb li l-Unions għadhom jirrapprezentaw l-interessi tal-haddiema?
18. Minn 1 sa 5, fejn 1 ifisser 'assolutament ma naqbilx' u 5 ifisser 'naqbel hafna', jekk ikollok bżonn xi tip ta' assistenza, tħossok komdu/a tkellem lil xi politiku biex jgħinek u jtik servizz preferenzjali?

Questionnaire

Sodisfazzjon tal-ħajja

19. Minn 1 sa 5, fejn 1 iffisser 'assolutament mhux sodisfatt' u 5 iffisser 'sodisfatt ħafna', b' mod ġenerali, kemm tħossok sodisfatt bil-ħajja tiegħek?
20. Jekk jogħġbok indika kemm inti sodisfatt f'ħajtek b' dawn l-aspetti li ġejjin: [Wieġeb b'dan li ġej: Sodisfatt ħafna/ Sodisfatt / Mhux daqstant sodisfatt / Assolutament mhux sodisfatt / Bla tweġiba]
 - Il-ħajja familjari tiegħek
 - Il-ħajja soċjali tiegħek
 - Is-sitwazzjoni finanzjarja tiegħek
 - [Għall-ħaddiema] Ix-xogħol jew karriera kurrenti tiegħek
 - Il-kwalità tal-ħajja fil-komunità lokali tiegħek
21. Hawn, 'viċinat' jirreferi għall-dik il-parti tal-belt/raħal fejn toqgħod inti. Minn 1 sa 5, fejn 1 iffisser 'assolutament mhux sodisfatt' u 5 iffisser 'sodisfatt ħafna', kemm inti sodisfatt/a bil-viċinat ta' fejn toqgħod inti?
22. Minn 1 sa 5, fejn 1 iffisser 'assolutament mhux sodisfatt' u 5 iffisser 'sodisfatt ħafna', kemm inti sodisfatt/a bid-dar fejn toqgħod inti?
23. Minn 1 sa 5, fejn 1 iffisser 'assolutament ma naqbilx' u 5 iffisser 'naqbel ħafna', tħoss li l-ġirien tal-viċinat tiegħek jieħdu ħsieb xulxin?
24. Minn 1 sa 5, fejn 1 iffisser 'problema kbira ħafna' u 5 iffisser 'mhux problema', kemm hija kbira l-problema tal-iskart fl-akwata tiegħek?
25. Minn 1 sa 5, fejn 1 iffisser 'problema kbira ħafna' u 5 iffisser 'mhux problema', kemm hija kbira l-problema tat-traffiku ingenerali?
26. Minn 1 sa 5, fejn 1 iffisser 'mhux bżonnjuż' u 5 iffisser bżonnjuż ħafna', kemm huma bżonnjużi l-Kunsilli Lokali fit-tmexxija effettiva tal-lokalità tiegħek?
27. Minn 1 sa 5, fejn 1 iffisser 'mhux involut' u 5 iffisser 'involut ħafna', kemm tikkunsidra li inti involut fl-attivitajiet tal-Kunsill Lokali tiegħek?
28. Minn 1 sa 5, fejn 1 iffisser 'skomodat ħafna' u 5 iffisser 'mhux skomodat', kemm tħoss li kont skomodat bl-istorbju fil-viċinat tiegħek dan l-aħħar xahar?



Questionnaire

Politika

29. Meta tiddeċiedi għal liema partit politiku għandek tivvota, liema minn dawn il-fatturi li ġejjin tikkunsidra l-iktar?
- Il-benesseri tal-familja tiegħek
 - L-ekonomija
 - Il-valuri assoċjati mal-partit politiku
 - Lealtà lejn il-partit li appoġġajt fil-passat
 - Il-kwalitajiet tal-kap tal-partit
 - Opportunitajiet ta' impjieg
 - Nippreferi ma ngħidx
 - Oħrajn [speċifika] _____
30. Jekk il-partit preferut tiegħek ikun involut fi skandlu ta' korruzzjoni, inti xorta tivvota lilu? Definitivament iva / Iva / Forsi / Le / Assolutament le
31. Liema minn dawn li ġejjin tagħzel biex tkompli s-sentenza? Jien nafda politiku li...
- Jaħdem id f'id mal-Komunità
 - Ma kienx involut fil-korruzzjoni jew skandli
 - Jagħti l-iktar importanza lill-ekonomija
 - Jagħti l-iktar importanza lill-problemi soċjali
 - Għandu valuri tradizzjonali (eż. ikun reliġjuż u kontra l-abort)
 - Ma jibżax imur kontra l-istatus quo
 - Għandu sfond professjonali
 - Oħrajn [speċifika] _____

Maltese Districts

