

*Sheela's Cultural Centre
1st Programme
April 1976*



1732 1960



Manoel
Theatre

CREMONA

280

at ALEXANDRA'S



Salvo

Leli

Joe

You can book your table, and eat as late as midnight, when ever you go to the Theatre

ALEXANDRA'S

35 SOUTH STREET, VALLETTA — Tel: 29050

Swiss House.

FOR

BETTER

DRESS FABRICS

The Swing is to Rothmans King Size



**King size flavour
that really satisfies**

In Malta, as in over 160 countries around the world, more and more people are choosing Rothmans King Size. The reason is not hard to find: quality that comes from extra length, a finer filter - and the best tobacco money can buy

3/- for Twenty

T. Piantoni

MALTA ARTS FESTIVAL 1970

THE MANOEL THEATRE MANAGEMENT COMMITTEE
in association with
THE MINISTRY OF EDUCATION, CULTURE & TOURISM

Patrons:
THEIR EXCELLENCIES THE GOVERNOR GENERAL & LADY DORMAN
THE HONOURABLE THE PRIME MINISTER
HIS HONOUR PROF. SIR ANTHONY AND LADY MAMO

THE MANOEL THEATRE MANAGEMENT COMMITTEE
IN ASSOCIATION WITH
THE NATIONAL CASH REGISTER CO. LTD.
PRESENT

"LE THEATRE D'ART DU BALLET"

WITH
ANNA GALINA

FRANCOISE NEF
BOGDAN BULDER

JANE BLAUTH
JORGE SIQUEIRA

GRETA GADERMAYR
SERGE TARTAS

MONICA THOMSON
DRAGO PANIAN

AND BALLET COMPANY

Artistic Director and Ballet Master: TATIANA PIANKOVA

Musical Director and First Pianist: NICOLAS KOPEIKINE

Pianist: G. BOURGOGNE

Company Manager: MARTHA LIGETI

Wardrobe: R. JOUAR; J. PROVOT

AT THE

MANOEL THEATRE

on the 13th, 14th, 17th & 18th APRIL 1970

Noniun condelemo m.

Handwritten signatures and notes at the bottom left of the page.

Joe Brownfield

Galna
Haye Fidele



LES SYLPHIDES

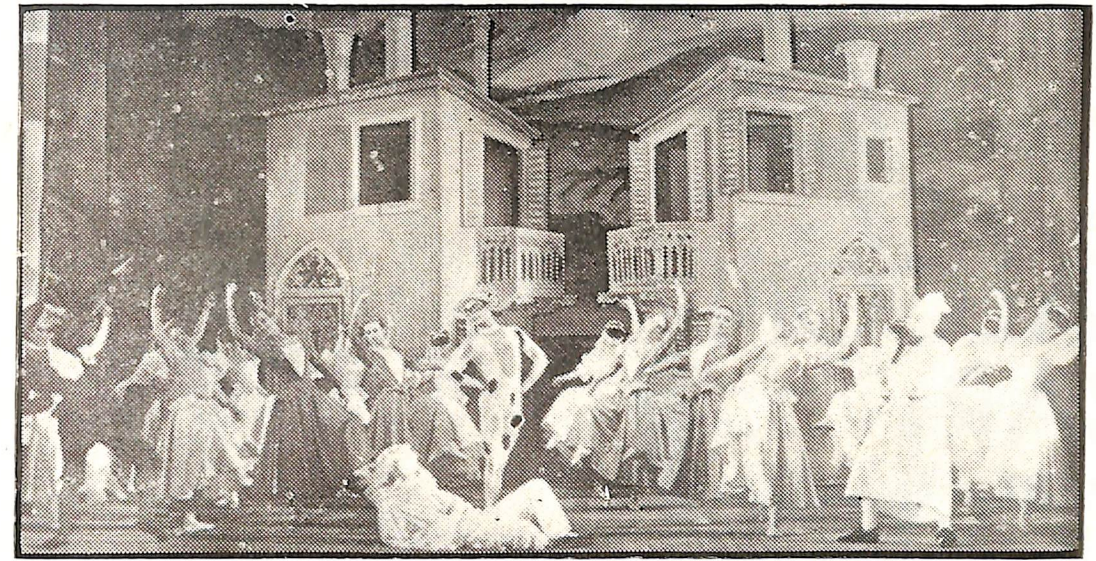
A romantic REVERIE in the form of a tableau, by MICHEL FOKINE

Music by CHOPIN

Decor and Costumes by N. GONTCHAROVA

	CAST						
<i>Nocturne</i>	CORPS DE BALLET
<i>Waltz</i>	JANE BLAUTH
<i>Mazurka</i>	FRANCOISE NEF
<i>Mazurka</i>	BOGDAN BULDER
<i>Prelude</i>	ANNA GALINA
<i>Waltz (pas de deux)</i>	ANNA GALINA, BOGDAN BULDER
<i>Sparkling Waltz</i>	THE WHOLE COMPANY

Jane Blauth



THE ADVENTURES OF HARLEQUIN

Music by BEETHOVEN

Choreography by MICHEL FOKINE

Decors and Costumes by N. GONTCHAROVA

	CAST						
<i>Two Coquettes</i>	FRANCOISE NEF JANE BLAUTH
<i>Harlequin</i>	JORGE SIQUEIRA
<i>The Captain</i>	SERGE TARTAS
<i>Pantaloon</i>	DRAGO PANIAN
<i>Pierrot</i>	B. RAJKOWSKY


Jorge Siqueira

CORPS DE BALLET

This ballet is inspired by the Commedia dell'Arte. We see Harlequin calling forth laughter and tears as a result of his pranks with the two coquettes, who are the wives of Pantaloon and the Captain.

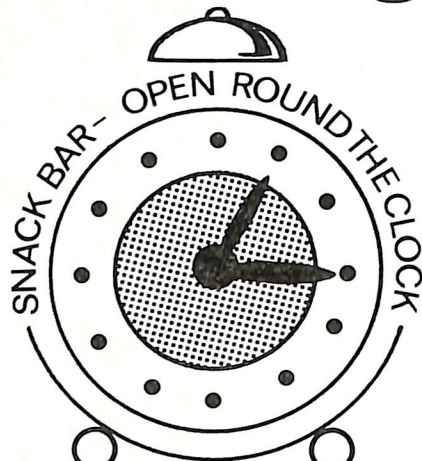
At The Malta Hilton

DANCING
NIGHTLY
TO
JOE CUTAJAR'S
QUARTET
AT
THE



**FALCON
BAR**
& NIGHT
CLUB
until 3 p.m.

Café Borgo



For Breakfast, Lunch, Dinner Snacks
Soda Fountain Specialities

SIMPLE SYMPHONY

Music by BENJAMIN BRITTEN

Choreography by WILLIAM DOLLAR

Costumes by HAROLD STEVENSON

CAST

JANE BLAUTH

GRETA GADERMAYR

JORGE SIQUEIRA

CORPS DE BALLET

OR

DANSEUSES D'OPERA

Ballet by JANINE CHARRAT

Music by IVAN SEMENOFF

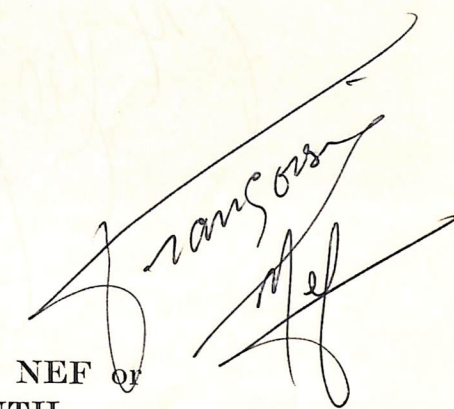
Choreography by JANINE CHARRAT

The Star Dancer — FRANCOISE NEF or
JANE BLAUTH

The Dandy — JORGE SIQUEIRA

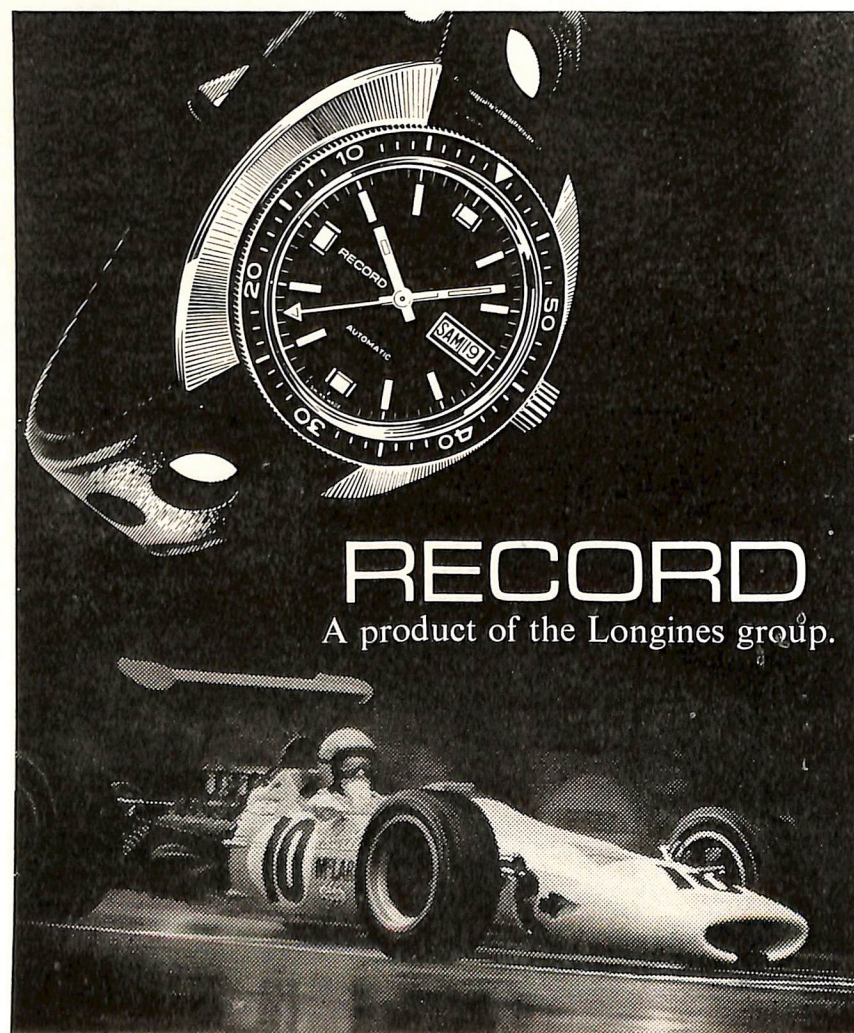
The Old Beau — DRAGO PANIAN

and the corps de ballet



A period tableau. A dancer is getting ready in the wings. We follow her on to the stage, triumphant among the ballerinas and then congratulated by the dandies and the regular patrons. One of them follows her back into her dressing-room; he succeeds, in a mad polka, in carrying her away, probably . . . to supper at Maxim's.

PROGRAMME IS SUBJECT TO CHANGE



RECORD
A product of the Longines group.

Sole Agents:-

EMM. PACE & CO. LTD.

78 St. Mary Street, Sliema — Dial 34575



FRANCESCA DA RIMINI

The opening scene of the ballet depicts the gateway to the Inferno — the tortures and agonies of the condemned. Francesca and Paolo begin to tell the story of their tragic love. Francesca, daughter of the Prince of Rimini, was given in marriage to Giovanni Malatesta, an old man with repulsive features. Paolo, one of his brothers, fell in love with Francesca, and she with him. One day her husband found them in an embrace and rushed upon Paolo with his dagger drawn. Francesca threw herself between the brothers, and Giovanni's blade pierced her heart. Giovanni withdrew the dagger and again struck Paolo and slew him. Subsequently, there is a return to the turmoil of Hades and the lovers are whirled about by violent winds even as they are locked in each other's arms.

Anna Galina



B. P. J.

FRANCESCA DA RIMINI

Music by TCHAIKOVSKY

(Francesca da Rimini, Opus 32)

Choreography by WILLIAM DOLLAR

Costumes and Scenery by RAOUL PENE DU BOIS

CAST

<i>Francesca Da Rimini</i>	ANNA GALINA
<i>Paolo Malatesta</i>	BOGDAN BULDER
<i>Giovanni Malatesta</i>	JORGE SIQUEIRA
<i>The Traitor</i>	DRAGO PANIAN

AND CORPS DE BALLET

Calèche,
ou le plaisir
de se
parfumer...



MCCANN

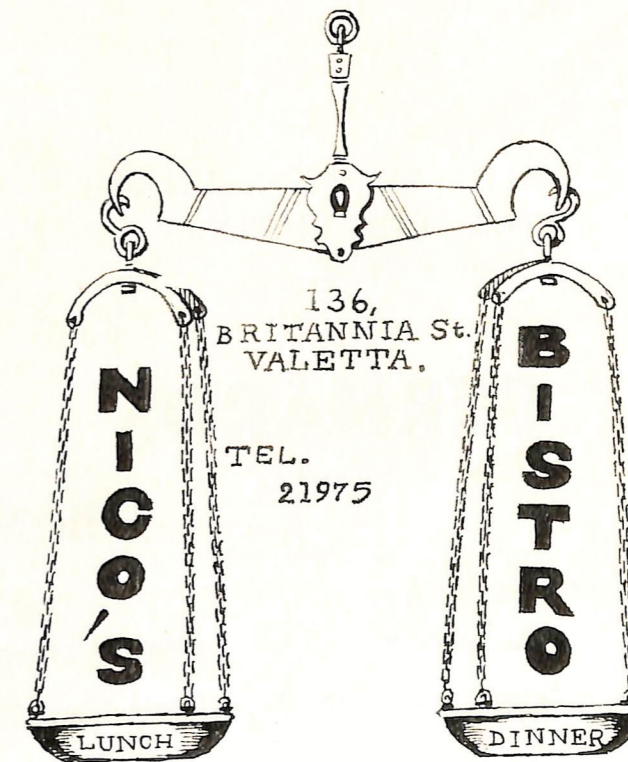
'... there's more to be said
for one bottle of Teacher's
than a case
of ordinary whisky'



order
TEACHER'S
HIGHLAND CREAM
SCOTCH WHISKY

Ah, unmistakable !

**AFTER
THE
THEATRE
DINE AT...**



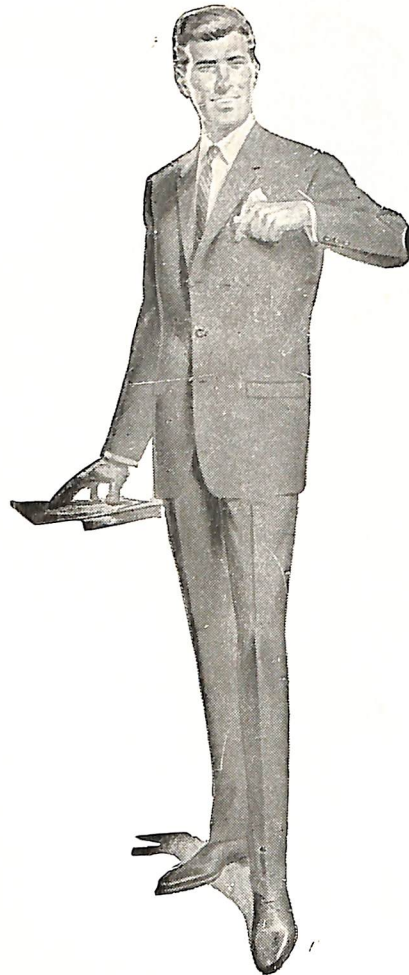
BERNARDS

SPRING AND SUMMER SUITS

A VERY COMPREHENSIVE RANGE OF STYLES AND FITTINGS IS NOW IN STOCK.

ALL SUITS ARE TAILORED FROM BEST QUALITY MATERIALS IN TERYLENE, DACRON AND MOHAIR BLENDS.

READY TO WEAR IN ALL SIZES AND FITTINGS UP TO 46" CHEST.



BERNARDS

THE MANS SHOP

45 Ordnance Street,
Valletta. Phone 24665

18 The Strand,
Sliema. Phone 32617

26 South Street,
Valletta. Phone 24665

