



1732

# MANOEL THEATRE

MANOEL

# THIS IS YOUR GUARANTEE OF A PERFECT STEAK



At the Whisper Knightclub and Farmhouse we have established a reputation for prime steaks cooked to perfection. Although our Chef can cook anything well, he specialises in steaks — which, in itself, is a good enough reason for our enviable reputation! Also, of course, we use only the very best meat obtainable.



Choose your cut and watch it sizzling towards perfection on the open charcoal grill, or choose something more exotic like *Steak Tartare* (minced raw steak with mayonnaise, chopped onions and capers, tabasco and worcester sauce — said to be the finest preventative or cure for hangovers!) or *Bloody High Steak* or *Farmhouse Special* or *Tournedos Millionaire*, etc.



So if you haven't been to the Whisper before, and still have doubts about a perfect steak in Malta, bring this guarantee with you — we'll see to it that you get complete satisfaction.

**Whisper Knightclub  
and Farmhouse  
Mosta 41122**



International Guest Artistes — Music for dancing  
from 8.30 to 1.00 a.m. (discotheque until 3.00 a.m.)  
— bar open 'till 3 a.m



# Johnnie Walker

Born 1820 - still going strong

Sole Distributors:

**CAPT. A. CARUANA LTD.**  
KINGSWAY - VALLETTA

THE FINEST  
AM/FM  
STEREO RADIO  
RECORDER IN  
THE WORLD  
RR800



It's the stereo radio recorder. Receives broadcasts on LW, MW, SW, marine band and FM stereo. Tapes your favourite programmes, or gramophone records - plays it all back in stereo. Mains or battery-operated. Connections for aerial, earth, stereo gramophone, recorder, microphone and speakers. Polystyrene cabinet with metal and rosewood foil finish.  
Dim. 187/8" x 105/8" x 77/8".

**PHILIPS**

Philips Showrooms  
232, Kingsway, Valletta,  
and Philips dealers  
throughout Malta and Gozo



*He'll adore you  
for choosing  
Queen Anne*



**QUEEN  
ANNE**

the finest **SCOTCH** wherever  
you are

**COMING SOON!**

*on the BIG SCREEN*

*at the*

**AMBASSADOR Theatre**

FULLY AIR-CONDITIONED

**"AIDA"**

**"MADAM BUTTERFLY"**

**"LA TRAVIATA"**

RELEASED BY:-

**THE MALTA UNITED FILM COOPERATION LTD.,**

# CHANEL

*annonce*

*son nouveau parfum*

## N° 19

Chez.

Royal Pharmacy,

Salus Pharmacy,

Rosina Depares, at Valetta.

Ta Xbiex Pharmacy and Beauty Parlour

Norman's Pharmacy,

Herman's Pharmacy,

St. Anthony's Dispensary at Sliema

Melita Pharmacy at Paceville.

et

SALONS

HILTON DRAGONARA PHOENICIA

PRELUNA MELLIEHA BAY

### IL TEATRO MUNICIPALE DI PIACENZA

presenta

al Teatro Manoel di Malta

## LA STAGIONE LIRICA TRADIZIONALE

1972

Sotto gli auspici del Ministero del Turismo e dello Spettacolo  
della Repubblica Italiana

Direttore Artistico  
LINO SARTORI

Collaborazione Artistica  
FABIO RONCHI

### REPERTORIO

#### RIGOLETTO

di Giuseppe Verdi

#### TOSCA

di Giacomo Puccini

#### LA SONNAMBULA

di Vincenzo Bellini

### ELENCO ARTISTICO

Signore: — VITTORIA BUCCINI, GIULIANA DI FILIPPO, ANNA MACCIANTI,  
GIANFRANCA OSTINI, GIORGINA PAOLIERI, ADELE ROMANO.

Signori: — LUIGI BARUFFI, NINO GUIDA, CARLO MENIPPO, ALFONSO  
MARCHICA, ELVIO MARINANGELI, TULLIO PANE, FRANCO PIVA,  
GUIDO PASELLA, MANLIO ROCCHI, MARCO STECCHI.

Maestri Concertatori e Direttori d'Orchestra

PIERALBERTO BIONDI — GIUSEPPE RUISI  
GLAUCO CATALDO

Registi

TONINO PIPI — CESARE BARLACCHI

Maestro Suggestore  
DARIO INDRIGO

# Lyons Maid



Remember how excited you were when they took you to your first show . . . how you laughed at the comics and booed at the baddies, how the lights, the music, the greasepaint all left you spellbound . . . and your interval ice cream was part of the magic . . .

Enjoy yesterday today with Lyons Maid.



ELVIO MARINANGELI



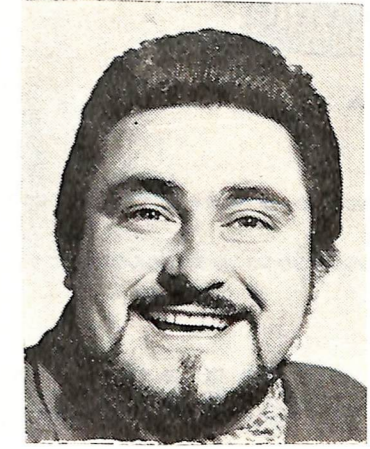
GIANFRANCHA OSTINI



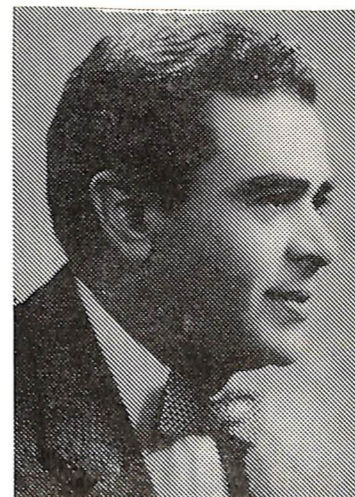
TULLIO PANE



ADELE ROMANO



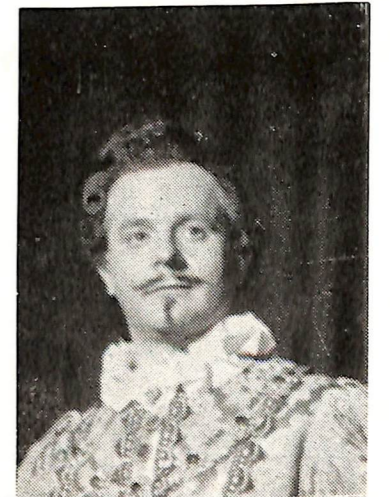
ROCCHI



FRANCO PIVA



GIORGINA PAOLIERI



GUIDO FASELLA

.. there's more to be said  
for one bottle of Teacher's  
than a case  
of ordinary whisky'



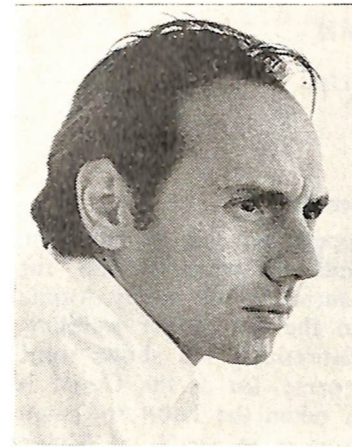
order  
**TEACHER'S**  
HIGHLAND CREAM  
SCOTCH WHISKY

**BUY THE BEST**  
**PAYNE'S G.P. TEA**  
**PURE CEYLON TEA**

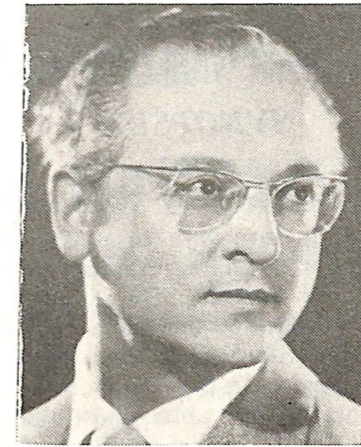
---



---



PIERALBERTO BIONDI



GIUSEPPE RUISI



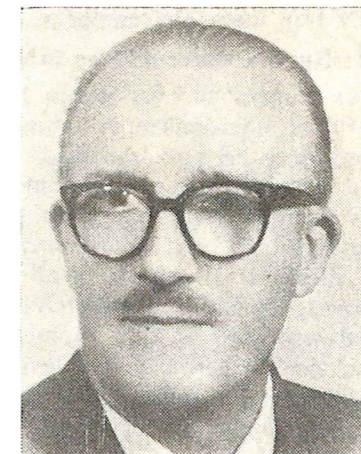
GLAUCO CATALDO



FERRARONI MARGHERITA



VALENTINO METTI



A. CESARE BARLACCHI



DARIO INDRIGO

# LA SONNAMBULA

## SYNOPSIS

### ACT I

Scene: **A village scene by Teresa's water-mill.**

The young peasant Alessio is in love with Lisa, the innkeeper, but she, in her turn, is in love with Elvino who is about to marry Amina, the orphan girl whom Teresa, the water-mill owner, had adopted as her daughter. The village folk surround the happy Amina while a notary is drawing up the marriage contract for her, on the eve of her wedding, when Count Rodolfo arrives in the village and joins in the celebrations. He shows some interest in the girl, but, as dusk begins to fall, the villagers disperse, for as the Count is informed, it will soon be the hour of the white ghost that has taken the habit to haunt the village house-tops by night. From his last word to Amina it is evinced that Elvino has become jealous of the Count. The young couple kiss each other goodnight in blissful expectancy of the morrow's union.

### ACT II

Scene: **Inside the village inn. The Count's bedroom.**

The Count is exchanging pleasantries with Lisa the innkeeper when a noise, coming from the window, disturbs them. Lisa departs forgetting her handkerchief behind. From the window there climbs into the room Amina in her night-gown. She is sleep-walking and, believing she is in the presence of her beloved Elvino, speaks of love to the person confronting her: the Count. Lisa is eavesdropping and quite unaware of Amina's real condition. Believing she has discovered that the Count and Amina had planned this meeting earlier that evening. She hurries off to spread the scandal. The upright Count will not harm the unfortunate girl's reputation and, being aware that it would be unwise to interfere with a sleep-walker, leaves the way she came. When the villagers and Elvino come upon the scene they find Amina asleep on the Count's sofa. At first Elvino will not believe his own eyes, but when the girl awakes and is unable to explain her presence there, she is accused of infidelity to her betrothed and the wedding is called off.

### ACT III

Scene I: **An open space in a highland wood.**

Amina, accompanied by her guardian Teresa, is on her way to Elvino's place to persuade him that she is innocent. They meet him in the wood worrying about his ill luck, but, on seeing Amina, the unhappy boy loses his temper and they separate in despair.

Scene II: **By the water-mill as in Act I.**

Elvino has decided to turn his glances to Lisa whom he could never really shake off and the villagers come to congratulate the innkeeper about it; indeed, they say he has directed that the wedding preparations be now resumed towards this end. But Count Rodolfo, returning to the inn that evening learns with some surprise that Amina is being taken for a guilty wench. He tells them that she had gone to him in her sleep taking him for Elvino, which explained why she had been heard speaking tenderly of love. Indeed he adds that she was the alleged village ghost of whom all had become so scared of late. This news, coupled with the discovery of Lisa's handkerchief in the count's room, decided Elvino against the newly projected wedding. At that moment, Amina is seen approaching from the water-mill window on to the dangerous ledge leading to the unused path across the stream. She is again sleep-walking and a false step would precipitate her to her doom in the turbulent waters below her. She halts in her stride, speaks of her love for Elvino, who unable to control himself, calls out to her and the spell is broken. The lovers embrace amid everybody's cheers.

a.s.m.

MARTEDI, 23 MAGGIO 1972, ORE 19.30

GIOVEDI, 25 MAGGIO 1972, ORE 19.30

# LA SONNAMBULA

Opera in Three Acts by FELICE ROMANI

Music by VINCENZO BELLINI

Editore Ricordi

First produced at the "Teatro Carcano" Milan in 6-3-1831  
and at the "Manoel Theatre" Malta in 6-11-1834

## CHARACTERS

<i>Count Rodolfo, lord of the village</i> ... ..	ALFONSO MARCHICA
<i>Amina, an orphan girl, betrothed to</i> ... ..	ANNA MACCIANTI
<i>Elvino, a wealthy landowner</i> ... ..	TULLIO PANE
<i>Teresa, a water-mill owner</i> ... ..	GIULIANA DI FILIPPO
<i>Lisa, innkeeper in love with Elvino</i> ... ..	VITTORIA BUCCINI
<i>Alessio, a peasant, in love with Lisa</i> ... ..	NINO GUIDA
<i>A Notary</i> ... ..	LUIGI BARUFFI

*In a village in Switzerland.*

Conductor of the Orchestra

GLAUCO CATALDO

<i>Producer</i>	<i>Chorus Master</i>	<i>Prompter</i>
CESARE BARLACCHI	VALENTINO METTI	DARIO INDRIGO

Gentili Fornitori: PALAZZO DELLA LUCE; GIO. BATTÀ DELIA — Parrucchieri: TONY GALEA.  
— Luci: VANNI LAUS — Trovarobe: F. MIFSUD e J. DALLI — Costumi: TONINO PIPI —  
Scenografia: ERCOLE SORMANI — Calzature: ARDITI — Parrucche: MONTI e COLLA —  
Attrezzi: RUBECCHINI — Macchinista: FERRUCCIO CALAMARI



# LA SONNAMBULA

L-ISTORJA FIL-QOSOR

L-EWWEL ATT

Xena: **F'raha! fejn il-mithna ta' l-ilma ta' Teresa.**

Iż-żagħżuġh rahli Alessio jhobb lil Lisa tal-Lukanda imma din hi mitlufa wara Elvino li jkun wasal biex itejjeg ma' Amina, tifla l-tima li tkun rabbietha Teresa tal-Mithna. In-nies tar-raħal jinsabu mdawrin ma' Amina fil-waqt li n-Nutar ikun qed ilesti l-kitba taż-żwieġ. Dlonk jidhol il-Konti Rodolfo li jkompli magħhom. Kif jkun qed jikkumpla lill-għarusa jara li kulhadd beda jwarrab għax jibda jaqqa' d-dlam. Isir jaf li kulhadd jidhol gewwa għax, bil-lejl, tkun tidher ruħ bajda ddrur fuq il-pont u l-bjut tad-djar. Jidher, mill-aħħar kelmiet li jgħid Elvino lil Amina qabel ma jinfirdu la dan ikun f'hażen xi għira għall-Konti, iżda huma jinfirdu bis-sliema.

IT-TIENI ATT

Xena: **Fil-kamra tal-Konti fil-Lukanda.**

Il-Konti qiegħed jicċajta jkellim lil Lisa l-lukandiera x'hin jisimghu hoss gejj min-naħa tat-tieqa u Lisa titlaq. Fil-fixkla tinsa l-maktur warajha. Mit-tieqa tidhol Amina bil-qm's ta' bil-lejl. Tkun miexja riegħda, u għaliha li tkun giet għand il-maħbub tagħha Elvino. Tgħid kliem heġu ta' mħabba lill-Konti. Lisa tkun qiegħda tissamma' wara l-bieb u taħseb li din kienet xi fteħima bejniethom minn fil-għaxija. Dlonk tmur tigrigi tgħid lil kulhadd. Iżda l-Konti ma jixtieqx li Amina titef gieħha bla ħtija u għalhekk johroġ minn hemm minn fejn tkun giet hi, bla ma jkellimha għax jibza l-aktar li jagħmlilha l-ħsara f'saħħitha. Amina tintefa torqod fuq sufan. Meta Elvino u nies tar-raħal jaslu u jsibuha hemm bil-kemm iridu jemmnu lil għajnejhom. Iżda kif Amina tqum, f'dik il-għaġġa, u ma tkunx tista' tfehimhom għaliex tinsab hemm, jaħsbu li tkun qed turi haġa b'ohra u titqies b'mara bla fidi. Elvino dlonk iħassar it-tieg.

IT-TIELET ATT

L-Ewwel Xena: **Triq qalb is-sigar.**

Amina ma' Teresa, sejra għand Elvino biex tipperswadih li hija bla ħtija. Jiltaqgħu miegħu sejjer lejn daru qalbu sewda jgħajjar lil xortih hażina. Amina tipprova tfeħmu. Iżda, billi hu ma jkunx jaf il-verità, ma jistax jemminha. Jirrabja u jitlaq iddispra'.

It-Tieni Xena: **Mill-gdid taħt il-mithna tal-ilma.**

Elvino qata' li jizzewweg lil Lisa u n-nies tar-raħal jigu jifirhu lil lukandiera ixxurtjata. u jgħidulha li Elvino qata' wkoll li t-tieg imħassar issa jkompli jitlesta f'isimha u f'ismu. Imma l-Konti Rodolfo, kif dak il-ħin jigi lura u jsma' kif Amina xorta kienet tilfet gieħha bla ħtija, jistqarrilhom is-sewwa fuq li dik ix-xbejba kiene timxi riegħda u kienet marret f'kamartu għaliha li sejra ssib hemm lill-maħbub tagħha Elvino; għalhekk dak il-kliem tagħha ta' mħabba li kienet semgħet Lisa. Issa jsiru jafu wkoll li Amina kienet dik "ir-ruħ bajda" li kienet qiegħda tidher bil-lejl fuq il-pont. Din l-aħbar flimkien ma' dik li jinsab il-maktur ta' Lisa fil-kamra tal-Konti jgħid li Elvino jħassar it-tieg mal-ħerġha Lisa. Iżda dak il-ħin tidher gejjja Amina, miexja riegħda, minn got-tieqa għal fuq il-pont fejn ir-rota tal-mithna, u tibda taqsam il-pont nofsu mwaqqa' b'periklu li tibqa' niezla tiġġarrarf fl-ilmijiet ta' taħta. Amina tieqaf u ssemmi l-imħabba tagħha bla tmiem għal Elvino. Iż-żagħżuġh ma jiflaħx iżjed iżomm u jinfexx igħajtilha. Mal-hasda tal-għajta, Amina tqum mir-raqda u tinzel għal hdejh bla ma jigrilha xejn. It-tnejn f'dirġajh xulxin, issa kulhadd ferħan iċapċilhom.



## One of the great hotels of the Mediterranean

The Phoenicia is one of the great hotels of the Mediterranean. Just beyond the city boundaries of ancient Valletta, it looks out over two harbours, and is encircled by the Floriana gardens.

Every room has its own bathroom, telephone, air-conditioning and radio, with television on request.

Six suites cater for all conference requirements; they include the unique 'Green Lounges' and a ballroom with a reception capacity of 1200.

There are two top-class restaurants and three bars; the cuisine is outstanding and there is a well-stocked wine-cellar.

Hotel

# PHOENICIA

The Mall, Valletta, Malta  
General Manager Mr A Lupi  
Telephone 25241  
Telex Malta 240  
Cables Hotelphoen



# BEST TOBACCO MONEY CAN BUY



There must be a reason why Rothmans is the world's largest selling - most wanted - King Size Virginia. It's simply this: Rothmans extra length, finest filter and the best tobacco money can buy give you true King Size flavour. Rothmans King Size really satisfies.

WORLD'S LARGEST SELLING - MOST WANTED - KING SIZE VIRGINIA



LUIGI BARUFFI



VITTORIA BUCCINI



NINO GUIDA



CARLO MENIPPO



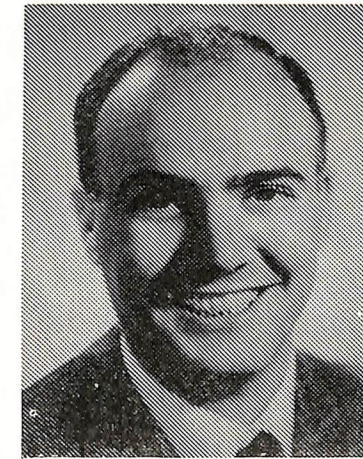
DI FILIPPO GIULIANA



ALFONSO MARCHICA



ANNA MACCIANTI



MARCO STECCHI

**Agfacolor**

**CT18**



The film giving  
transparencies ready  
for projection



Its quality features:

- Brilliant reds
- Wonderful pastel shades
- Strong blues
- Very good exposure latitude
- Outstanding definition

Sole Agents for AGFA-GEVAERT

**ATTARD & CO.**

67, SOUTH STREET, VALLETTA — Tel. 27555

Est. 1913

Tel. Central 25123.

**JOHN CIANCIO — Photographer**

PHOTO GOODS DEALER

**THE ROYAL STUDIO**

133, OLD THEATRE STREET, VALLETTA (PALACE SQUARE)  
AWARDS LOCAL AND FOREIGN MEDALS AND CERTIFICATES  
SPECIALIST IN PORTRAITURE AND WEDDING GROUPS  
TAKES BY APPOINTMENT

OTHER ENGAGEMENTS OUTSIDE STUDIO BY APPOINTMENT.

**NO CONNECTION WIT OTHER FIRMS.**

Sole Malta Agents for FUJI PHOTO FILM CO. LTD., JAPAN.

If it's smoother than White Label  
it probably isn't whisky.



Sole Distributors: P. Cutalar & Co. Ltd. Tel: 25488

# CHIANTI BERTOLLI

RED OR WHITE  
THE WINE THAT  
MADE CHIANTI FAMOUS



THE MOST

EXPORTED

AND APPRECIATED

## ITALIAN OLIVE OIL IN THE WORLD

## MANOEL THEATRE MANAGEMENT COMMITTEE

Mr. GINO MUSCAT AZZOPARDI — *Hon. President.*

Mr. A. AGIUS FERRANTE, L.P. — *Chairman.*

Dr. V. M. PELLEGRINI, LL.D. — *Vice-Chairman.*

Miss MARIE LOURDES BONNICI,

L.R.S.M., L.Mus. L.C.M., F.L.C.M. — *Hon. Treasurer*

Mr. JOSEPH GRIMA — *Hon. Secretary.*

Mrs. MYRIAM ENGLAND SANT FOURNIER — *Member.*

Mr. MICHAEL KISSAUN — *Manager.*

### FORTHCOMING EVENTS

MANOEL THEATRE MANAGEMENT COMMITTEE in association with  
THE EMBASSY OF THE FEDERAL REPUBLIC OF GERMANY —  
Piano Recital by Peter Hollfelder on 27th May, at 7.30 p.m.

\* \* \*

COMPAGNIA FILODRAMMATICA CARLO GOLDONI —  
Italian Play: "C'e Una Macchia in Paradiso", on 3rd June, at 7.30 a.m.;  
on 4th June, at 6.30 p.m.

\* \* \*

MANOEL THEATRE ORCHESTRA AND CHORUS MELITENSIS —  
"Missa da Requiem" by Antonio Nani, on 6th June, at 7.30 p.m.;  
on 7th June, at 7.30 p.m.

\* \* \*

MANOEL THEATRE MANAGEMENT COMMITTEE —  
Orchestral Concert with Piano Soloist Simone Camilleri,  
on 13th June, at 7.30 p.m.

---

Late comers will not be admitted to the Auditorium.

Smoking is not permitted in the Auditorium, in Boxes and in Gallery.

The Management reserve to themselves the right to vary or omit any part of the programme without previous notice.

Patrons are reminded that taking of photographs during the performance is not allowed. Children, even when accompanied by their parents, will be required to occupy a seat.

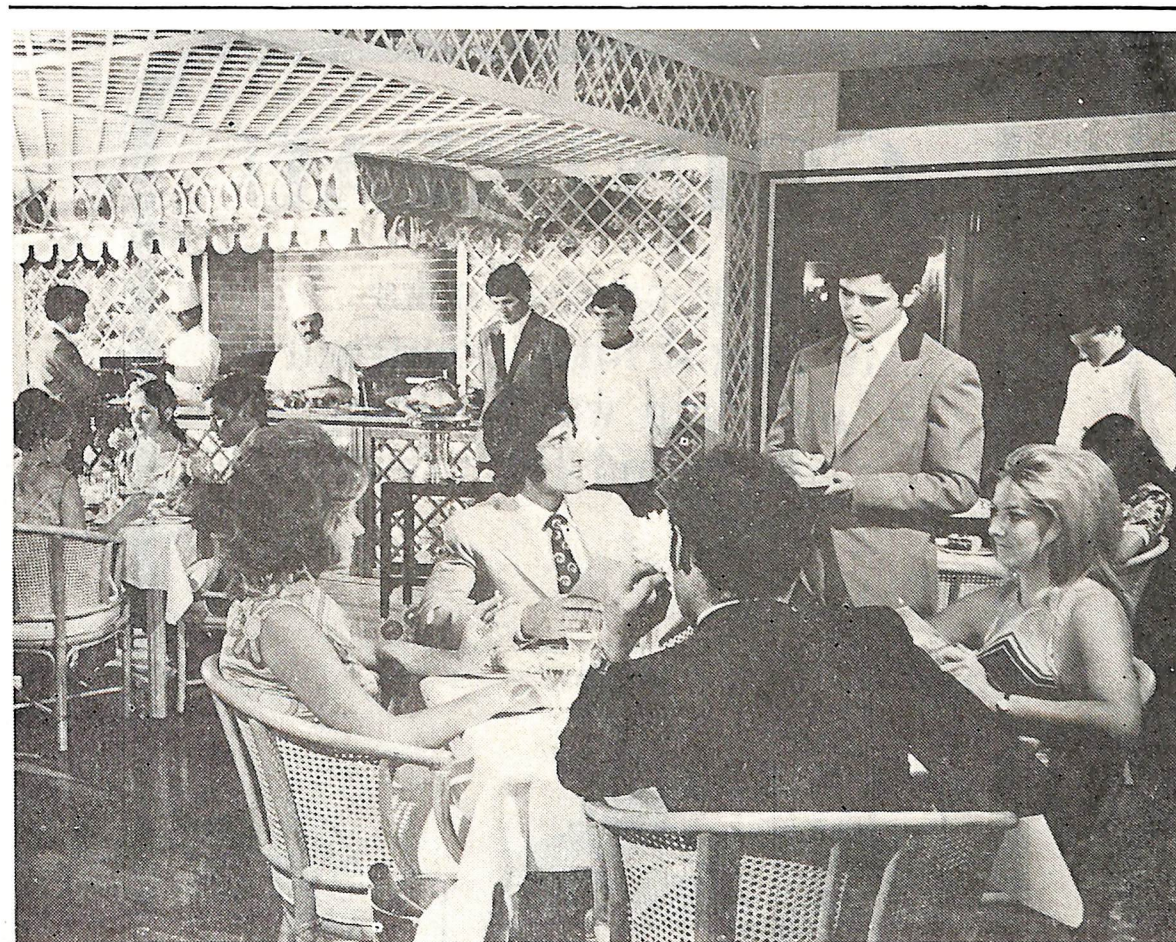
---

Your glasses, please !.....

at interval time.....

it's.....

**PEPSI.**  
*of course!*



## At the GRAND HOTEL VERDALA

The Four Seasons Restaurant offers a unique 'La Chaine de Rotisseurs' menu lunch served on the terrace of the fifth floor, from where one can enjoy the heady, breathtaking atmosphere. Dinner-Dance nightly to the tunes of the

Oscar Lucas Band and resident singer Mary Spiteri.

**For reservations tel: 74901**



GRAND HOTEL VERDALA RABAT

*Four Seasons*  
RESTAURANT

# COINTREAU

Dry, on the rocks  
in long drinks, Cointreau  
a certain way of living  
all around the world.



Agents:— **SACCONE & SPEED LIMITED**

