



1732

*An Evening of Balls
by
Belinda Wright & Talho Jurista
9th, 10th November 1974.*

**MANOEL
THEATRE**

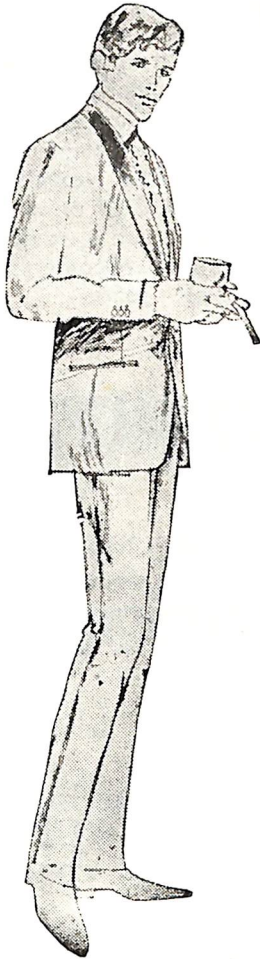
BERNARDS

THE MANS SHOP

CRAFTSMAN TAILORING

in

CLASSIC DRESSWEAR



FINE WOOL BARATHEA MATERIAL CAREFULLY
CUT AND TAILORED WITH AN EYE TO PRESENT
DAY STYLE.

A LARGE RANGE OF SIZES IN READY TO WEAR
OR MADE TO YOUR PERSONAL REQUIREMENTS.

BERNARDS . .

FOR ALL YOUR CLOTHING

18 THE STRAND SLIEMA.

TEL: 32617

45 ORDNANCE STREET VALLETTA

" 24665

26 SOUTH STREET VALLETTA

" 24665

The Friendly Way to Fly



Air Malta flies, to London, Manchester, Birmingham, Paris, Rome, Frankfurt and Tripoli. Air Malta's crew are an experienced international group. Pilots come from Britain, Scandinavia and Pakistan. Cabin Crews are exclusively Maltese, some of whom have already had many years flying experience, and all of whom are ready to give you a traditionally warm Maltese welcome as soon as you step aboard.

AIRMALTA

LONDON—BIRMINGHAM—MANCHESTER—ROME—PARIS—FRANKFURT—TRIPOLI

IT'S CHEAPER TO LONDON THROUGH UNTOURS

You can stay one week in LONDON from as little as £M59.50 including return ticket by AIR MALTA, accommodation with English Breakfast, and coach transfers.

The longer you stay the cheaper it becomes.

Or you can just fly to London and back for only £M45.

For details and bookings contact:—

UNTOURS LIMITED

WORKERS' MEMORIAL BUILDING,
OLD BAKERY STREET, VALLETTA
TEL. 23640, 24451, 21966.

BRANCH OFFICE,
66, TOWER ROAD, SLIEMA
TEL. 36477, 36478.

THE MANOEL THEATRE MANAGEMENT
COMMITTEE

in association with

THE BRITISH COUNCIL

present

BELINDA WRIGHT AND JELKO YURESHA

in

AN EVENING OF BALLET

at the

MANOEL THEATRE

9th NOVEMBER 1974.

THE NUTCRACKER

Music by TCHAIKOWSKY.

Choreography by PETIPA and IVANOV.

Costumes by JELKO YURESHA.

Grand Pas de Deux from Act II:

The Kingdom of Snow:

The Snow Queen and the Nutcracker Prince.

I N T E R V A L

GISELLE

Music by ADOLPHE ADAM.

Choreography by CORALLI.

ACT II

Full of remorse for the tragic death of Giselle, the peasant girl he betrayed, Prince Albrecht comes to lay flowers on her lonely grave in the forest. As he prays for forgiveness, he senses her presence. The force of their love is so strong that her spirit becomes visible to him. The Wilis condemn him to dance to death, but Giselle's undying love protects him until daybreak, when the spirits return to their graves and Albrecht is left alone with his grief.

I N T E R V A L

SONATA

Music by POULENC.

Choreography by GEOFFREY CAULEY.

Geoffrey Cauley, a young dancer with the Royal Ballet, is one of the most interesting new British choreographers. This lyrical pas de deux was first performed in 1968 and was later expanded into a ballet, "In the Beginning", for the Royal Ballet's touring section in January 1969. Since then his "Lazarus" and "Symphonie Pastorale" have also been added to the Royal Ballet's repertoire.

Musical Interlude from "The Nutcracker".

THE NUTCRACKER

Music by TCHAIKOWSKY.

Choreography by PETIPA and IVANOV.

Costumes by JELKO YURESHA.

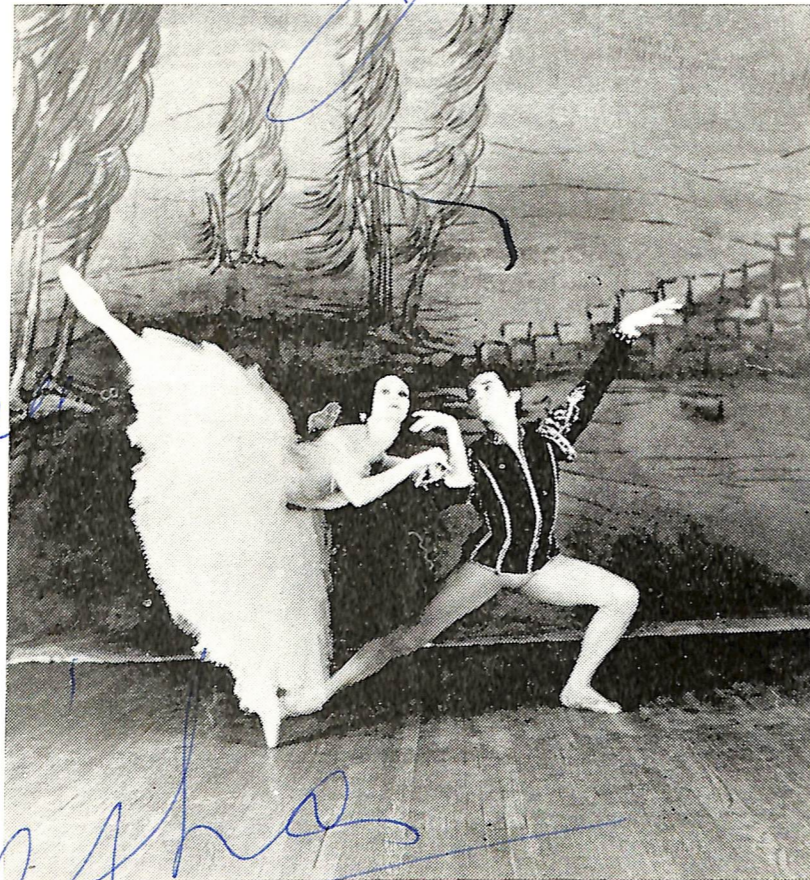
Grand Pas de Deux from Act III:

The Kingdom of Sweets:

The Sugar Plum Fairy and the Nutcracker Prince.



Jelko Yuresha



1974

JELKO YURESHA

and

BELINDA WRIGHT

Belinda Wright and Jelko Yuresha first appeared as partners in a Royal Command Gala before H.M. Queen Elizabeth the Queen Mother in 1959. Since then the union of these two ballet stars has been internationally acclaimed. In the repertoire of London's Festival Ballet Company, Belinda and Jelko danced leading roles in the main cities of the British Isles, Europe and Latin America from Mexico to Buenos Aires.

In the Royal Ballet season 1964/65, they danced together in "Giselle", "Swan Lake" and "Sleeping Beauty". From 1967 they began touring more widely than most dancers appearing not only in capital cities, but in places where ballet was almost unknown, building their reputation throughout the world as "Ambassadors of British Ballet". Their dancing has recently taken them to Greece, Israel, India, Ceylon, Malaya, Singapore, New Zealand, Peru, Columbia, Venezuela, Costa Rica, Guatemala, San Salvador, Jamaica and Cuba amongst other countries. Thousands of miles of success that can be summed up by the unanimous acclaim of both the public and the critics.

Their partnership continued when they were invited for seasons of Ballet at the famous La Fenice Theatre in Venice (1970/71), and theatres in Rome and Trieste. They danced a new version of "Paquita" choreographed by Mona Vangsaa in Copenhagen 1972, followed by performances in Istanbul and a third visit to Cyprus.

Belinda Wright and Jelko Yuresha belong to the group of Ballet Stars who tour the world, either appearing as guest Artists with the leading Companies of the countries they visit, or giving an "Evening of Ballet" on their own. Ballet has always been an international art and such stars are part of a great tradition which goes back to the hey-day of Romantic Ballet when ballerinas such as Taglioni and Grisi kept moving from country to country. Among the itinerant stars of today, Belinda Wright and Jelko Yuresha stand out because of their admirable harmony, sincerity, charm and spontaneity. They complement each other well both physically and temperamentally, a blend that has developed from a very close personal and professional rapport.

FORTHCOMING EVENTS

MALTA THEATRICAL COMPANY — **HTIEĠA TA' RAĠEL** — Friday, 15th;
Saturday, 16th; Sunday, 17th November, at 6.30 p.m.

M.T.M.C. — **ORCHESTRAL CONCERT BY THE MANOEL THEATRE ORCHESTRA**
— SOLOIST CONNIE SULTANA — Friday, 22nd November, at 7.30 p.m.

MALTA TALENT ARTISTES — **INT MIN INT?** — Saturday, 23rd at 7.00 p.m.;
Sunday, 24th November, at 6.30 p.m.

M.T.M.C.— **VOCAL AND INSTRUMENTAL CONCERT** — Friday, 29th November,
at 7.30 p.m.



**Johnnie Walker...the world's
largest selling
scotch whisky**



Born 1820 — still going strong

Sole Agents:—

Capt. A. Caruana Limited, Kingsway, Valletta

