

THE MANOEL THEATRE  
MANAGEMENT COMMITTEE

*in association with*

The Istituto Italiano di Cultura

*present*

**A VOCAL AND INSTRUMENTAL CONCERT**

*by*

**THE MANOEL THEATRE ORCHESTRA**

at ST. PAUL'S SQUARE, MDINA

Leader — GEORGE SPITERI

Conductors

INO SAVINI and JOSEPH SAMMUT

Saturday 14th September, 1974.

Marco Stecchi -

PROGRAMME

Anna Maccianti

OVERTURE

HOMMAGE A MOZART

C. PACE

Written in plain traditional style and performed for the first time at the M.C.I. in 1956, to commemorate the 200th anniversary of Mozart's birth 1756 - 1956.

TWO NORWEGIAN DANCES

GRIEG

Edward Grieg has earned the sobriquet of "Chopin of the North" which implies not that he was Chopin's imitator, but that he achieved the Norwegian equivalent of the tender melodic line, the sensitive harmonizations and the exquisite perfection of detail that characterized Chopin's music. Because of his love of his country, as well as the influence exerted upon him by such flaming nationalists as Nordroak and Ole Bull, Grieg not only developed a profound admiration of Norwegian folk music but moulded his compositorial technique on the style and idioms of Norwegian folk music.

PEER GYNT SUITE No. 1

GRIEG

Morning Mood; The Death of Ase; Anitia's Dance; In the Hall of the Mountain King.

From the incidental pieces composed for the play, Grieg developed two orchestra suites. The first, now widely famous, spread Grieg's name throughout the world of music. It includes four movements: (1) Morning Mood; (2) Ase's Death; (3) Anitia's Dance; (4) In the Hall of the Mountain King.

OVERTURE

L'ITALIANA IN ALGIERI

ROSSINI

Born Pesaro in 1792 and died near Paris in 1868, trained at Conservatory of Bologna as cellist and composer; specially devoted to music of Mozart; soon became famous as composer, providing 36 operas in 19 years, 1810-29 then 1:0 more to end of life; most important are "The Barber of Seville", "William Tell" and the famous "Stabat Mater". L'Italiana, was Rossini's first great success in the field of opera buffa, and remains one of the best examples.

Conductor JOSEPH SAMMUT

I N T E R V A L

NORMA

SINFONIA

BELLINI

PAGLIACCI

LEONCAVALLO

Prologo — Baritono MARCO STECCHI

TRAVIATA

"SEMPRE LIBERA DEGG'IO"

VERDI

Soprano ANNA MACCIANTI

VALSE TRISTE

SIBELIUS

BARBIERE DI SIVIGLIA

"LARGO AL FACTOTUM"

ROSSINI

Baritono MARCO STECCHI

LUCIA DI LAMMERMOOR

SCENA DELLA PAZZIA

DONIZETTI

Soprano ANNA MACCIANTI

TRAVIATA

PRELUDIO ATTO PRIMO

VERDI

RIGOLETTO

DUETTO ATTO 3°

VERDI

"TUTTE LE FESTE AL TEMPIO — SI VENDETTA"  
Soprano ANNA MACCIANTI — Baritono MARCO STECCHI

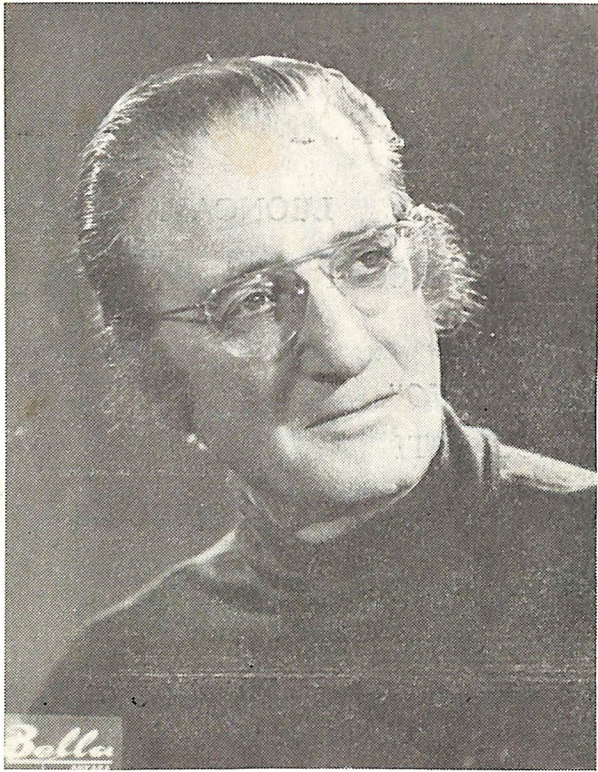
NABUCCO

SINFONIA

VERDI

Conductor: INO SAVINI





**INO SAVINI**

**JOSEPH SAMMUT**

*Joseph Sammut*

