

W Knirsch, C Schlensak, S Dittrich, C Kurtz, and D Kececioglu. Poststenotic aneurysm in a child with native coarctation of the aortic arch. *Images Paediatr Cardiol.* 2005 Apr-Jun; 7(2): 20–22.

<h1>IMAGES</h1>	in PAEDIATRIC CARDIOLOGY
-----------------	---

Images Paediatr Cardiol. 2005 Apr-Jun; 7(2): 20–22.

PMCID: PMC3232572

Poststenotic aneurysm in a child with native coarctation of the aortic arch

W Knirsch,¹ C Schlensak,² S Dittrich,¹ C Kurtz,³ and D Kececioglu¹

¹Department of Congenital Heart Disease/Pediatric Cardiology, Children's University Hospital Freiburg, Germany

²Department of Cardiac Surgery, University Hospital Freiburg, Germany

³Department of Radiology, University Hospital Freiburg, Germany

Contact information: W.Knirsch, University Children's Hospital Zürich, Department of Pediatric Cardiology, Steinwiesstr. 75, CH 8032 Zürich, Switzerland Phone: +41

44 266 76 17 begin_of_the_skype_highlighting Fax: +41 44 266 79 81 ; Email: walter.knirsch@kispi.unizh.ch

MeSH: coarctation of the aortic arch, aneurysm, child

Copyright : © Images in Paediatric Cardiology

This is an open-access article distributed under the terms of the Creative Commons Attribution-Noncommercial-Share Alike 3.0 Unported, which permits unrestricted use, distribution, and reproduction in any medium, provided the original work is properly cited.

A 12-year old girl was admitted to hospital because of arterial hypertension, emboli to lower extremities and exertional dyspnea. Diagnostic work-up revealed coarctation of the aortic arch with a giant poststenotic aneurysm in the descending aorta by angiocardiography (fig. 1) and by computer tomography (fig. 2). The patient was operated by using a 18 mm Dacron tube prosthesis (fig. 3).

W Knirsch, C Schlensak, S Dittrich, C Kurtz, and D Kececioglu. Poststenotic aneurysm in a child with native coarctation of the aortic arch. *Images Paediatr Cardiol.* 2005 Apr-Jun; 7(2): 20–22.

Fig. 1 Angiogram (frontal projection) demonstrating left ventricular hypertrophy due to the severe coarctation of the aortic arch with a giant poststenotic aneurysm of the descending aorta.

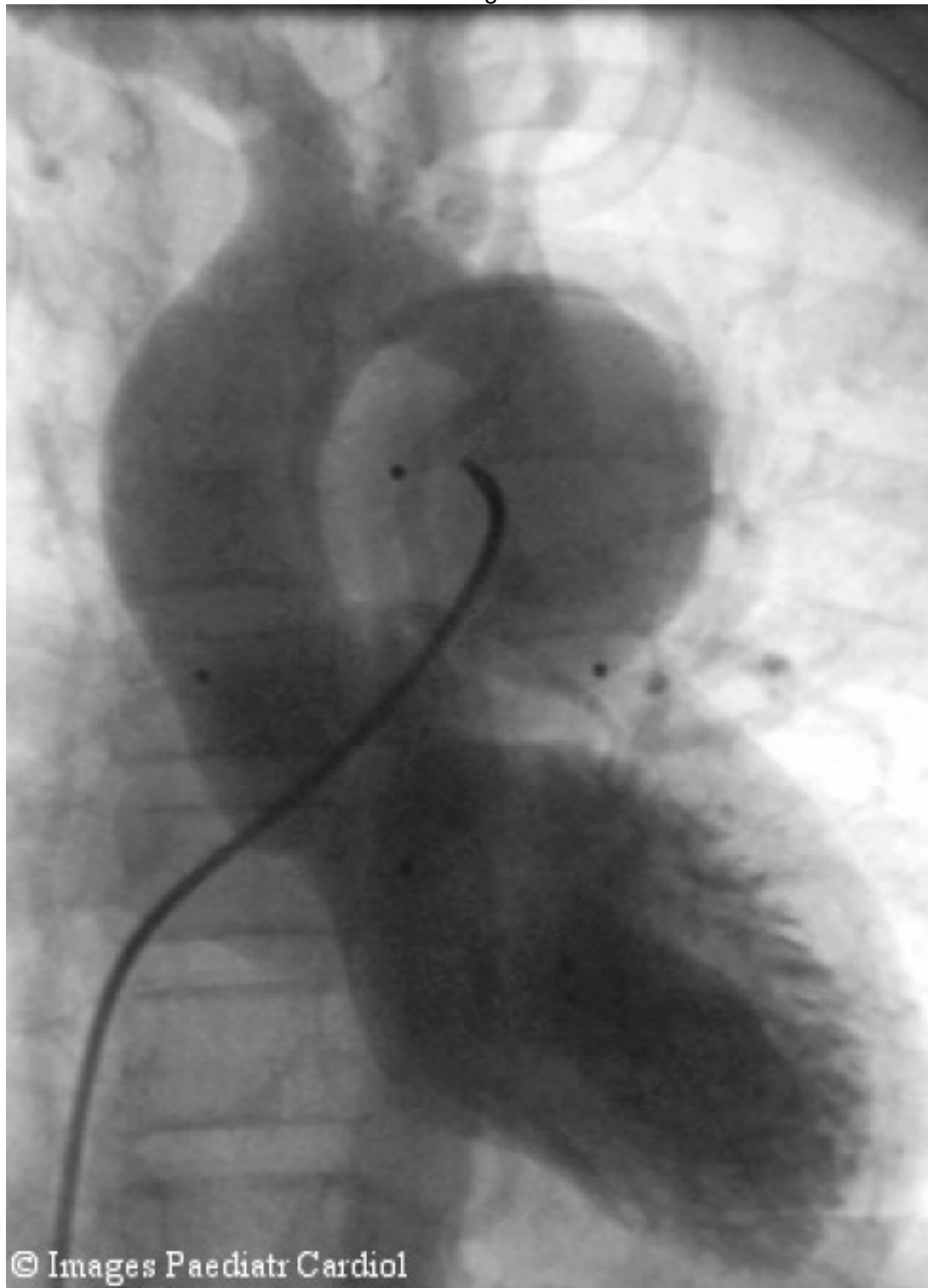


Fig. 23D-Computer tomography of the aortic arch demonstrating the native coarctation of the aortic arch (minimal diameter 0.5 cm) and the poststenotic aneurysm in the descending aorta (diameter 4.2 x 5.1 cm).



Fig. 3 Angiogram (lateral projection) showing the postoperative result.

