



INFORMATION LITERACY

BUILDING SEARCH QUERIES



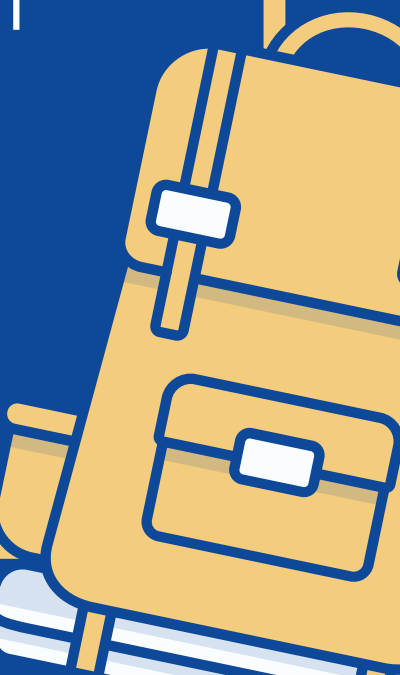
Ryan Scicluna
UM Library



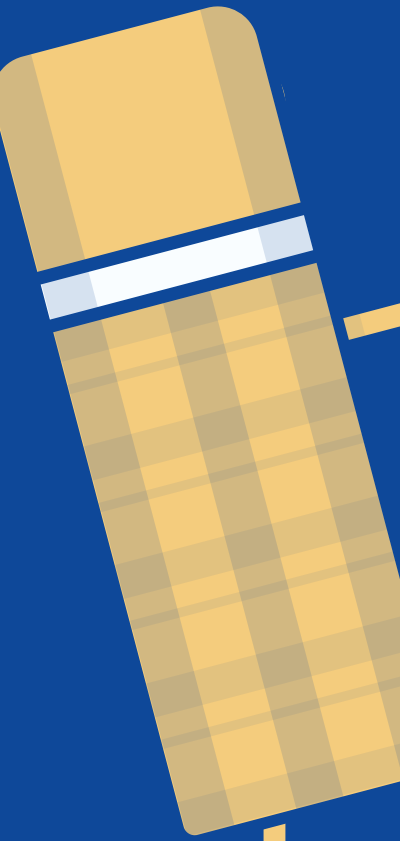
SEARCHING IS NOT EASY

Finding exactly what you want when you want it has become complicated due to the vast amount of information being produced.

Shifting through millions of results to find something is not an ideal situation.



**THERE IS A WAY TO
MAKE IT EASIER!**

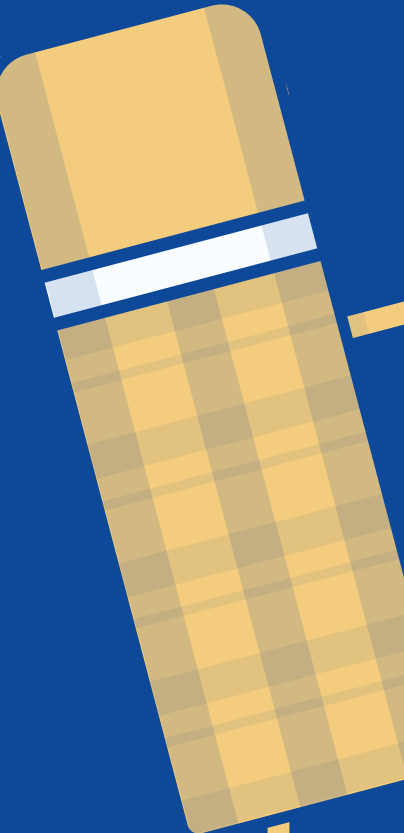


THE TOPIC


- What do you need to find?
- Is the topic broad or narrow?
- Are there any professional terms used?
- What keywords am I going to search with?
- Can I use other synonyms for the keywords I selected?
- What did other professionals use to describe their work?



Figuring out all that before you start searching can make your life easier.



HOW TO IDENTIFY YOUR KEYWORDS?



KEYWORD - a word used
to indicate the
content of a document.

EXAMPLE

IDENTIFY THE KEY CONCEPTS IN YOUR RESEARCH TOPIC:

How has the disposal of plastic impacted the marine environment?

PULL OUT MAIN POINTS OUT OF THE RESEARCH QUESTION TO FIND THE SEARCH TERMS:

Disposal, plastic, impact, marine environment

LOOK UP OTHER RELATED WORDS E.G. PHRASES OR SYNONYMS:

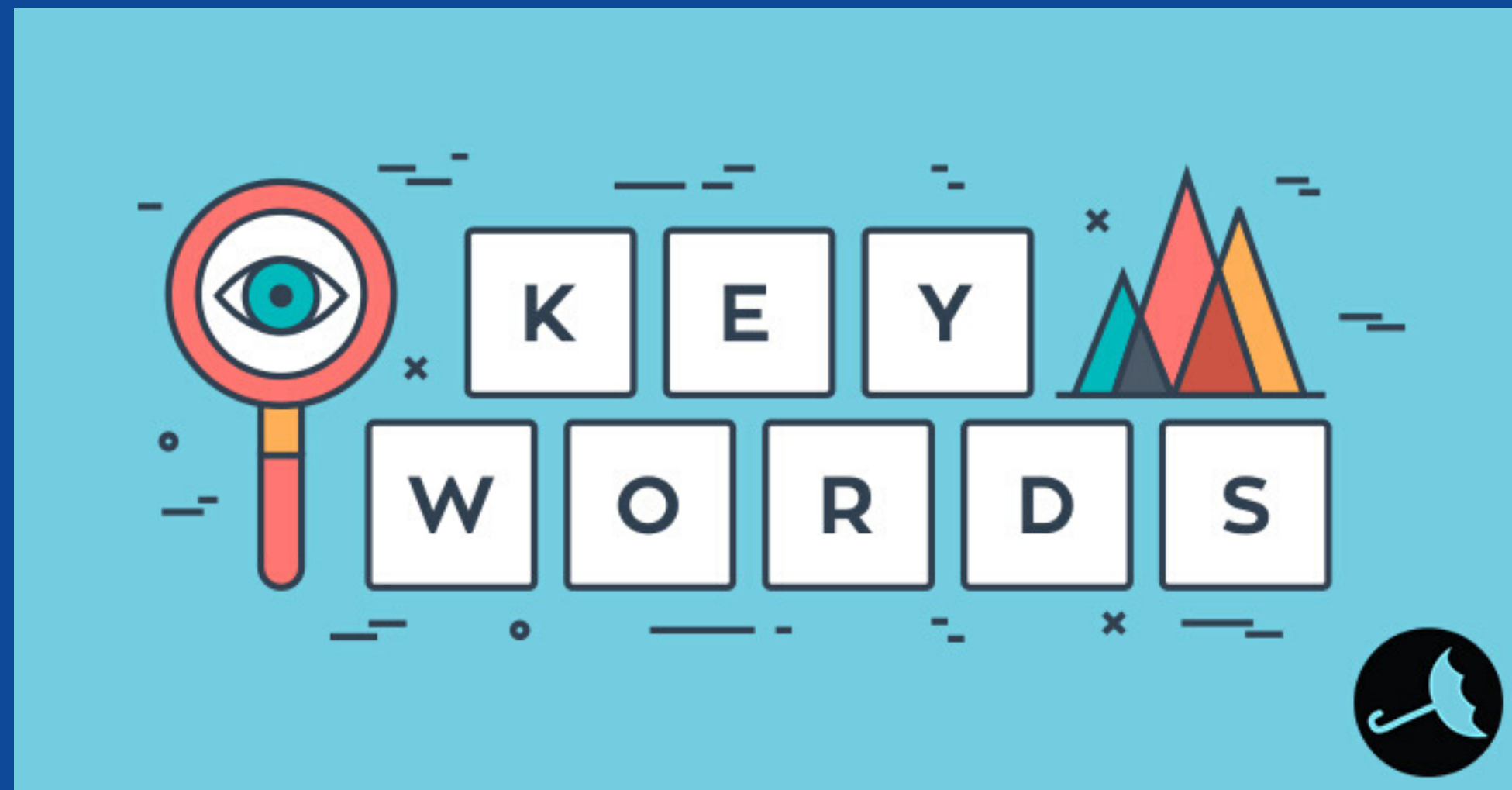
Disposal = removal, destruction, dumping;
Impact = influence, burden;
Marine environment = marine habitat; sea; water

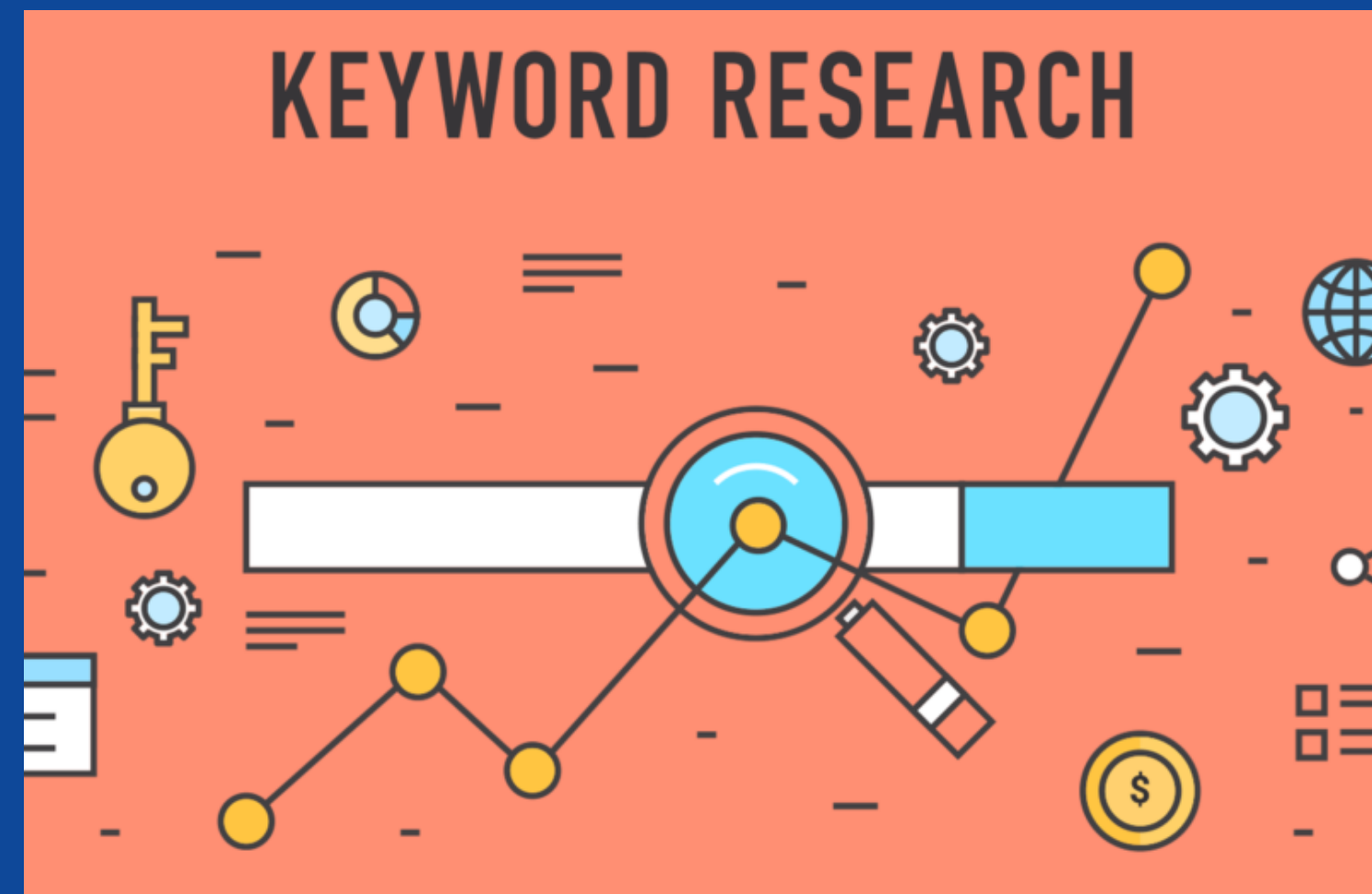


RUN A SEARCH USING
SEVERAL RELEVANT
KEYWORDS.

BROWSE THE RESULTS AND
CHOOSE 2 OR 3 THAT
ARE RELEVANT.

LOOK AT THE KEYWORDS
THAT WERE USED BY
AUTHORS TO DESCRIBE THE
CONTENT OF THE
ARTICLES.





READING GENERAL ARTICLES
ABOUT YOUR TOPIC
WILL GIVE YOU IDEAS FOR
MORE KEYWORDS THAT
YOU COULD USE

USE SUBJECT HEADINGS
PROVIDED BY THE
DATABASE TO NARROW
DOWN YOUR RESULTS

BOOLEAN OPERATORS



AND

Use AND to retrieve all of your search terms

OR

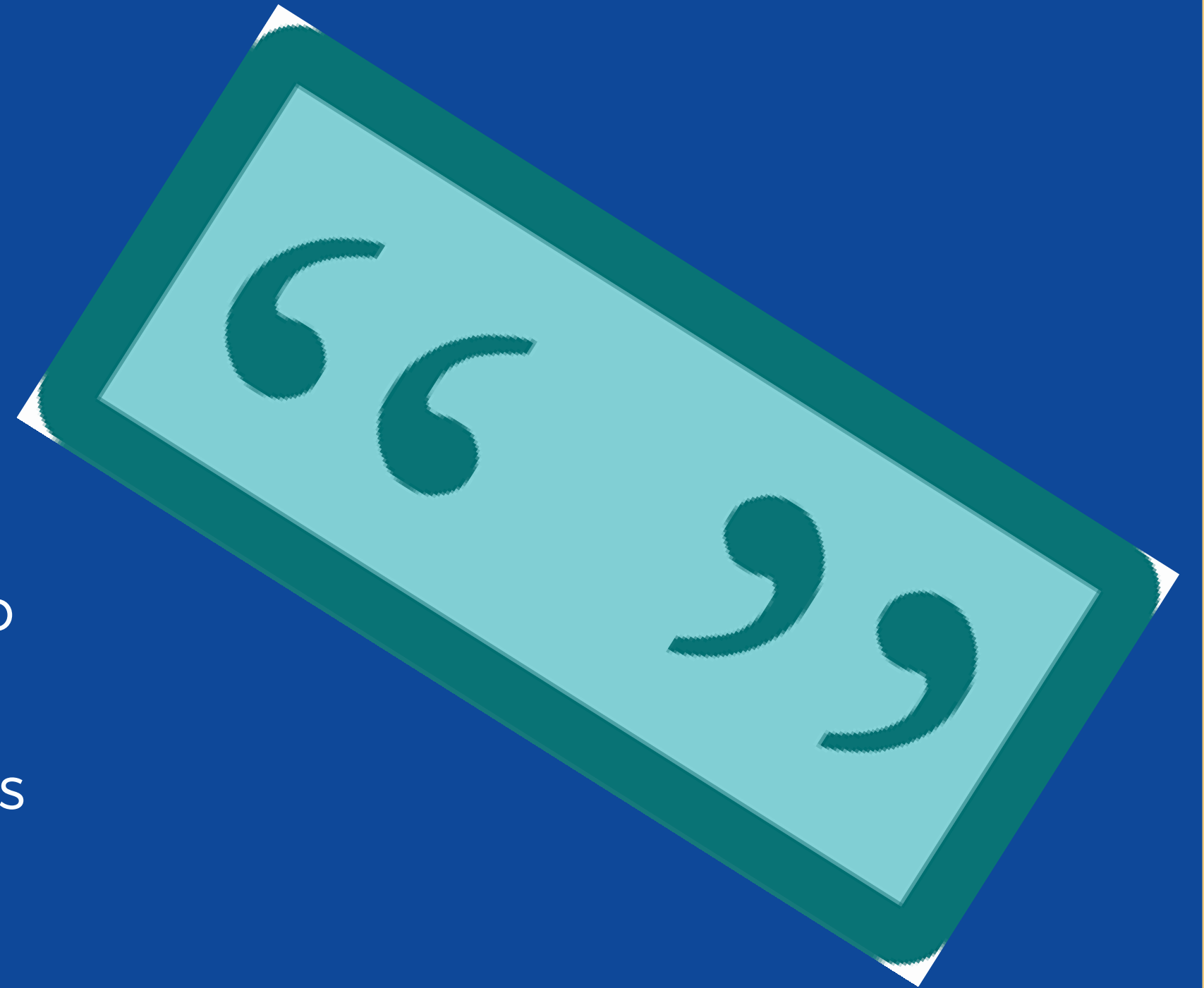
Use OR to broaden your search by connecting two or more synonyms

NOT

Use NOT to exclude a term(s) from your search results

PHRASES

To search for an exact phrase, you need to type quotation marks around the phrase. You can combine both words and phrases in your search.



TRUNCATIONS



ENTER A **QUESTION MARK**
TO PERFORM A SINGLE
CHARACTER WILDCARD
SEARCH.

Example:

wom?**n** = woman, women

colo?**r** = color, colour

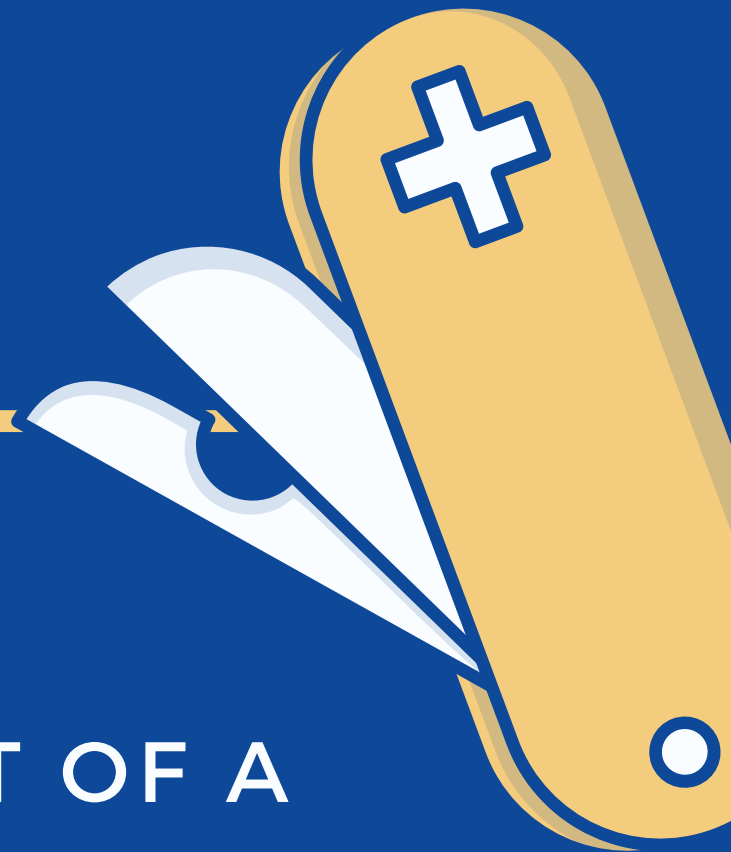


ENTER THE ROOT OF A
WORD AND PUT THE * AT
THE END.

Example:

cultur* = culture, cultural,
culturally

dilpoma* = diplomacy,
dilpomatic, diplomats



QUESTIONS? COMMENTS?



WEBSITE

www.um.edu.mt/library



FACEBOOK

facebook.com/um.libraryservices/



INSTAGRAM

um.library

EMAIL

ryan.scicluna@um.edu.mt