

Village Postmarks

VILLAGE POSTMARKS OF



MALTA 1891 - 1921



THE ESTABLISHMENT OF THE POLICE POSTAL AGENCIES IN MALTA 1891

From 1st. October 1891, the Police in twenty six mainland villages were permitted to sell postage stamps, so becoming Postal Agents. It did not turn the Police Stations into Post Offices, any more than the various shops and bazaars which were (and have since been) given Postal Agencies. The Police Stations were merely authorised to sell stamps, and frank letters. They did not offer Registration, Parcel post Money and Postal Order facilities, and, if a villager had a parcel to send or a letter to Register - he had to go to the Main or nearest Branch Post Office. (It will be noted that only low value stamps are found cancelled with the village postmarks for this reason). Most of these Police Station Agencies closed in 1921 and the scarcity of the postmarks is reflected by the length of time they were in use, with those from the island of Gozo being in the main, the scarcest.

VILLAGE POSTMARKS OF



MALTA 1891 - 1921



POPULATION (1900) 1518

ASCIAK

POPULATION (1921) 1629

This single ring strike exists in two sizes - 21½mm (Type 'A') and 22mm (Type 'B'). All with AM or PM time codes. Can also be identified by two different 'K's - in Type 'A' the 2 arms of the 'K' meet approximately in the middle of the upright stroke, and Type 'B' the top arm of the 'K' joins upright very close to the bottom. Police Agency closed 17.11.1921

A.M.

TYPE 'A'

P.M.

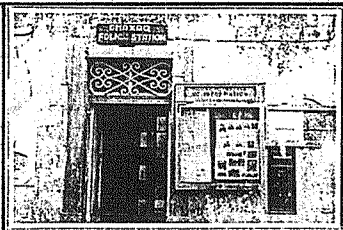


TYPE 'B'



POLICE STATION AGENCY

63-65 St. Mary Street



VILLAGE POSTMARKS OF



MALTA 1891 - 1921



POPULATION (1901) 8417

BIRCHIRCARA

POPULATION (1921) 8565

Birchircara opened as a Branch Office on 1st. April 1898 and closed on 30th. April 1899. It then re-opened, most probably in September 1900 closing down again in November 1921. The strike used was a 21mm single ring with code letters 'A', 'B', 'C' and 'D' but there is some doubt whether this strike was used with code 'D'. Although recorded, the 'D' may have been a displaced 'C' (which is a recorded error 'C' inverted and reversed)(1919-1921) There is also an error on the 'B' code - again inverted and reversed (1910-1913)

Code 'A'

Code 'B'



Reversed

Code 'C'

Code 'D'



Reversed

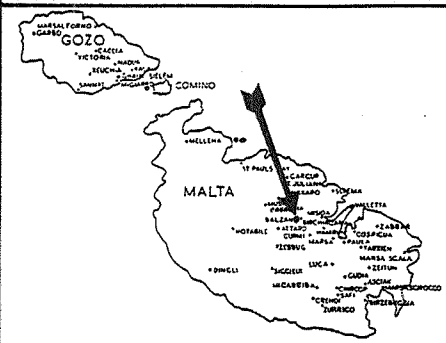
POLICE STATION AGENCY

19, St. Roque Street up to 1903 - 164 High Street from 1903

VILLAGE POSTMARKS OF



MALTA 1891 - 1921



POPULATION (1901) 1250

BALZAN

POPULATION (1921) 1313

Balzan Police Station Agency opened around 1918 and closed in 1921. Only one type of strike was used - a 23mm single ring with either AM or PM time codes

A.M.



P.M.



POLICE STATION AGENCY

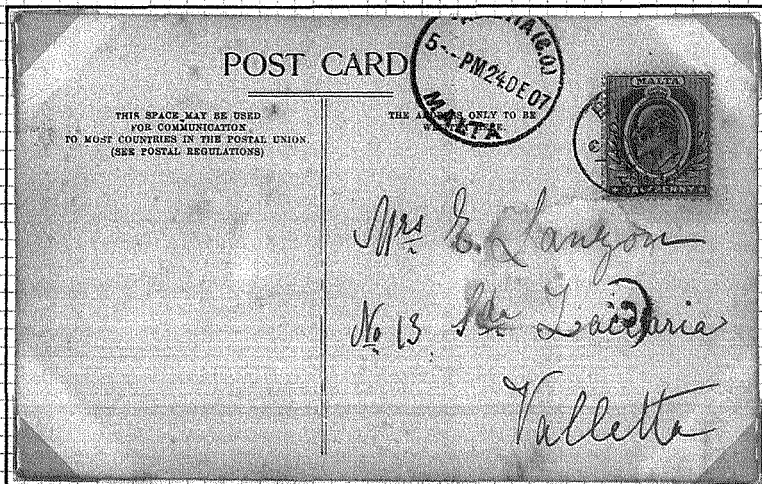
199, High Street





BIRCHIRCARA

A local 'Christmas Greetings' post card to Valletta - bearing a K.E.VII $\frac{1}{2}$ d cancelled by a Birchircara Code 'B' cancel of December 24th. 1907 with a Valletta receiving mark for 5.0pm the same day.. It also bears the postmans mark of a '3' in oval in black.



VILLAGE POSTMARKS OF



MALTA 1891 - 1921

CACCIA

POPULATION (1901) 2562

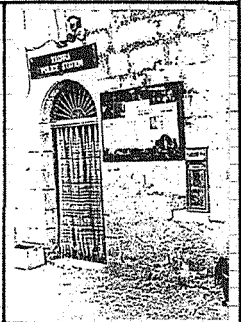
POPULATION (1921) 3262

Caccia on the island of Gozo was in use from 1900 until 1920. The strike in use was a 23mm single ring with time code 'AM'.



POLICE STATION AGENCY

11-12 Church Street





CACCIA

POPULATION (1901) 2562

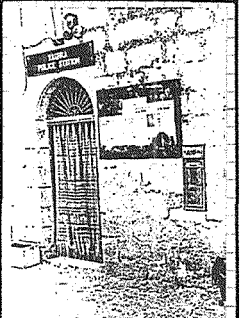
POPULATION (1921) 3262

Caccia on the island of Gozo was in use from 1900 until 1920. The strike in use was a 23mm single ring with time code 'AM'.



POLICE STATION AGENCY

11-12 Church Street



VILLAGE POSTMARKS OF



MALTA 1891 - 1921



POPULATION (1901) 1540

CASAL-LIA

POPULATION (1921) 1612

Casal-Lia used a 19mm single ring cancel with code 'A' (16.1.01 - 29.1.21) code 'B' (24.12.14 - 15.4.19) and code 'C' (18.5.07 - 11.6.19) Code 'D' is reputed to exist but this is very unlikely as no doubt a misplaced 'C' has been misinterpreted. This agency closed in 1921

Code 'A'



Code 'B'

Code 'C'



POLICE STATION AGENCY

45, Bakery Street and Main Street



VILLAGE POSTMARKS OF



MALTA 1891 - 1921



POPULATION (1901) 633

CHIRCOP

POPULATION (1921) 707

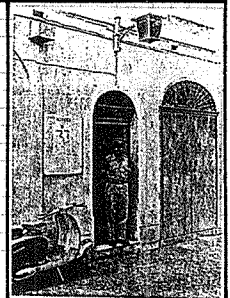
The Agency at Chircop used a 21mm single-ring cancellation with a time code of AM only. Closed before 1921.

AM Code



POLICE STATION AGENCY

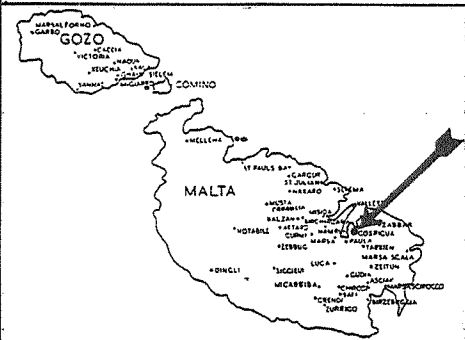
34, St. Roque Street



VILLAGE POSTMARKS OF



MALTA 1891 - 1921



POPULATION (1901) 12148

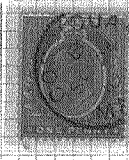
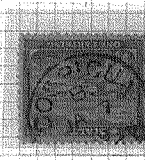
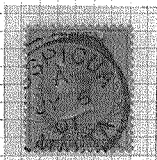
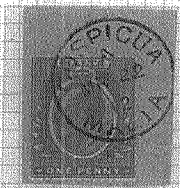
COSPICUA

POPULATION (1921) 11536

Cospicua used two types of strikes. Type I, a 20mm single ring cancel with code letters 'A', 'D', 'F' or no letter at all, and was in use during Queen Victoria and King Edward VII period only. Type II, was a 23mm single ring cancel with code letters 'A', 'B', 'C', 'D', 'E', 'F' and 'G'. This page shows examples of the Type II cancel.

Code 'A'

Code 'B'



Code 'C'

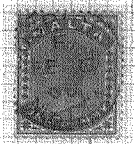
Code 'D'



Code 'E'

Code 'F'

Code 'G'

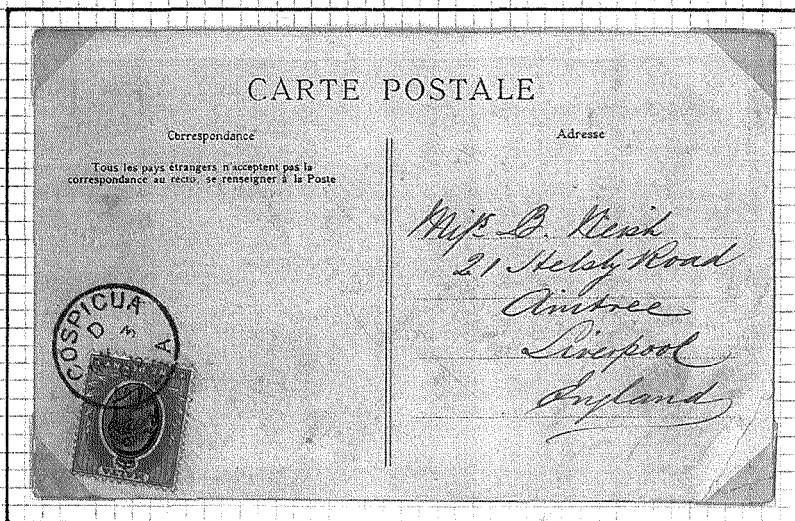




COSPICUA

This post card, printed in Paris appears to be a view of 'BAB-EL-OUED'. It was sent from Malta to Aintree, Liverpool, and bears a 1905 1d. red and black stamp which is franked by Type II 23mm single ring cancel of Cospicua, dated May 3rd. 1906 with code letter 'D'.

Also on the obverse is the simple message 'All's well, Alick!'



VILLAGE POSTMARKS OF



MALTA 1891 - 1921

POPULATION (1901) 1333

CRENDI

POPULATION (1921) 1526

Only one cancel was in use in Crendi throughout - a 21mm single ring with time code 'AM' only. The Agency closed in 1921



POLICE STATION AGENCY

1, Church Street



