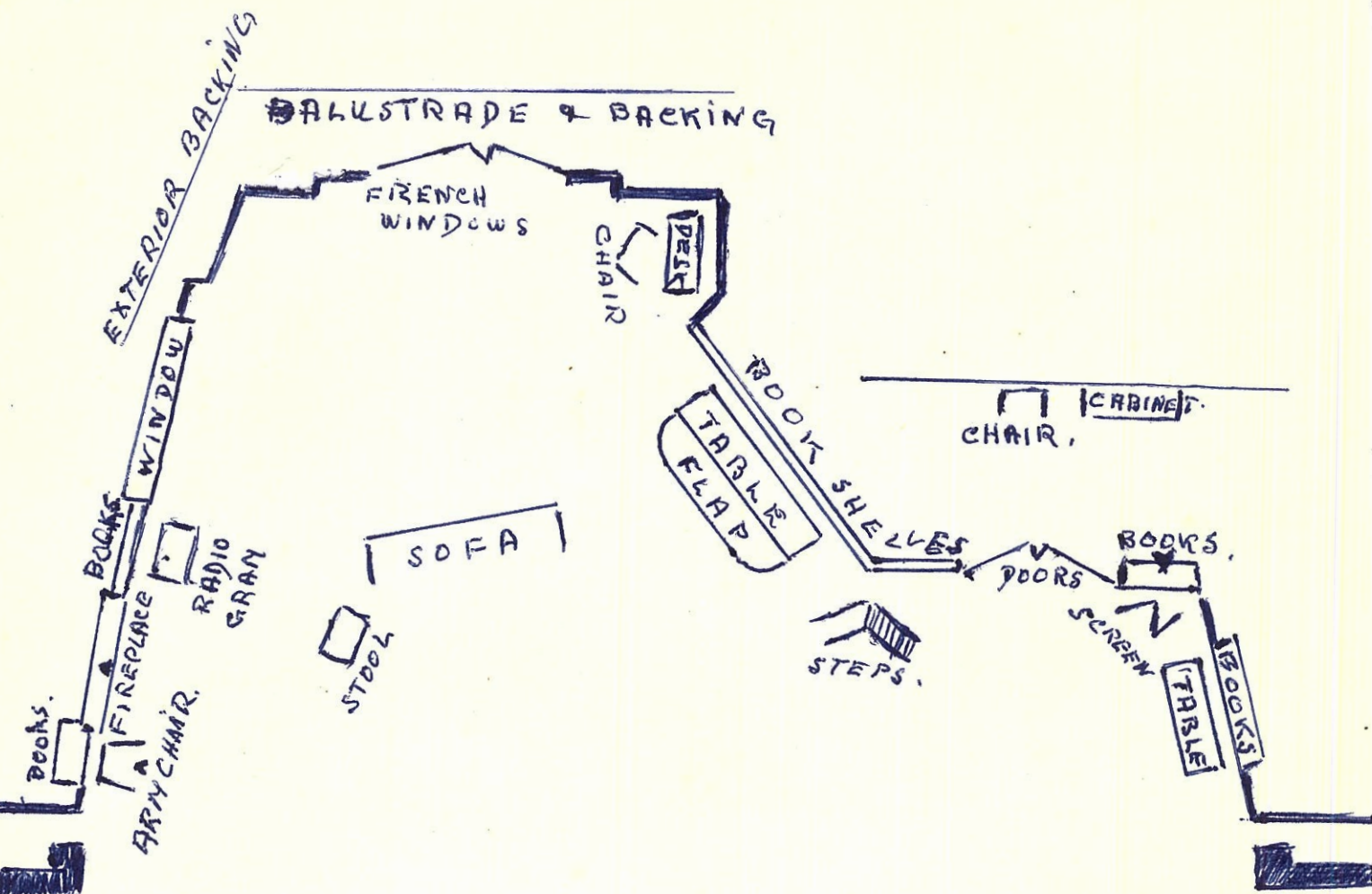


"The Years Between"  
FURNITURE PLOT.



GROUND PLAN.

Carpet on stage  
 Large rug below the sofa  
 Large rug L., below the door.  
 Curtains at the windows.  
 Pictures on Chimney and cabinet

- 1 large sofa
- 2 Armchairs (L.C., and down R.)
- 1 Oak gate leg table with flap.
- 1 Writing desk.
- 1 chair at the same.
- 1 small table (to be wheeled) down L.
- 1 low coffee table
- 1 Radogram
- 1 Tall Cabinet with drawer in lower part.
- 1 Set of library steps.
- Recessed Bookcases, filled.
- 1 Lamp standard. 1 Electric table lamp.

In the hall.  
 Strip carpet.  
 1 Cabinet,  
 1 Hall chair.

"THE YEARS BETWEEN"

Property Plot:

- 1 Tray wooden 18X12 inches.
- 1 Tray, silver oval, fancy gallery
- 1 Tray, wood and chrome corners
- 1 Salver, plain silver.
- 1 Salver, embossed edged, fancy silver,
- 1 Muffin dish, silver (with scones)
- 1 Table Cloth (in drawer of cabinet)
- 1 Coffee Pot, silver.
- 1 Coffe pot, blue.
- 1 Jug, milk, silver.
- 1 Sugar basin, silver.
- 1 Cigarettes box, silver on copper (on desk) 1 ditto on table.
- 1 Cigarette box, engraved lid (on mantelpiece)
- 3 knives small white handles,
- 1 knife desert,
- 1 Pair sugar tongs,
- 4 coffee spoons.
- 2 Teaspoons,
- 1 bottle of champagne.
- 12 sherry glasses.
- 4 Whisky glasses, goblet shape,
- 1 sherry decanter, fancy.
- 1 Decanter, whisky, hobnail.
- 1 Bowl wooden.
- 3 cups and saucers, coffee, blue hand.
- 3 cups and saucers, tea, brown and cream.
- 3 cups and saucers, coffe green stripe.
- 4 plates, tea, small brown and cream.
- 2 cups and saucers, green and white.
- 1 plate, bread and butter, brown and cream.
- 1 cake stand, with cake.
- 1 basin sugar, brown and cream.
- 1 Jug milk, brown and cream.
- 1 Fishing rod
- 5 books, assorted (see descriptions) for Robin and Michael
- 3 books(old). (See descriptions) For Robin and Michael
- 18 additional real books, on table and floor.
- About 30 real books on shelves - the rest to be book backs.
- 1 suitcase, leather.
- 2 jugs,(glass)
- 1 Reel (fishing)
- 3 plates (dinner)
- 1 Glass dish
- 1 White rose bowl (on the table)
- 1 Knitting bag
- 4 Index Files )
- 2 Wire letter trays) (On the table)
- Variuous papers, letters, etc.
- 1 Teapot,(brown)
- 1 Honeypot (earthenware)
- 3 Ashtrays (silver)
- 2 Ashtrays, green block small size
- 1 Pewter photo frame
- 1 Silver photo frame (Michael, on the table)
- 1 Inkstand, silver, single bottle (on the table)
- 1 Tobacco jar (On the mantelpiece)
- 1 Waste paper basker (under the desk)
- 1 Atlas (Robin)
- 1 Dish, nickel, 18 inches, (plain)
- 1 Ashtray, green glass triangle (on desk)
- 1 Globe on stand (on the floor Act . Scene 1. Later on the table.
- 1 duster in desk drawer.
- 2 Beer tankards.
- 1 Wedding ring, 9 carat gold (Diana)
- 1 Clock carriage (Silver) on desk.
- 1 Stationery rack. 6 glasses sherry.
- Radiogram, effects.
- Dog bark.
- 1 Blotter (on desk)
- 1 Inkstand, silver and 1 bott square.
- 1 Bell, desk, silver
- Clock, chime.

"THE YEARS BETWEEN"

LIGHTING PLOT.

ACT I.

Scene 1.

Floats: Amber, pink, blue, all at  $\frac{1}{4}$ .  
No. 1 Batten: ditto at  $\frac{1}{2}$   
No. 2 Batten ditto at  $\frac{1}{4}$   
Exterior cloth: Batten and ground row, amber and blue, checked down. Flood on the same, No. 17 Steel (frost) checked down.  
O.P.Flood: (Through r. window) No. 4 amber lengths at  $\frac{1}{2}$   
(The lighting is slightly checked, slowly, early in the scene.  
Batten spots No. 51 gold, on acting areas as the lamps are switched on.)

Scene 2.

Floats: Amber, pink, and blue, at  $\frac{1}{2}$   
No 1 Batte: Ditto at  $\frac{3}{4}$ .  
No. 2 Batten: Ditto at  $\frac{1}{4}$ .  
Spot Batten: No. 51 gold (frost) and salmon pink (frost) on acting areas at  $\frac{1}{2}$   
Exterior cloth: Batten and ground row, amber and blue at  $\frac{1}{2}$   
Flood on the same, No. 4 (frost) at  $\frac{1}{2}$   
O.P.Flood: (Through window) No. 4 amber (Frost) at  $\frac{1}{2}$   
Interior(hall) backing: Amber lengths at  $\frac{1}{2}$

Cues: 1. After exit of Vicar and wife: Slowly check floats to  $\frac{1}{4}$ , and No. 1 Batten to  $\frac{1}{2}$

2. After - Diana: One of us has got to tell Robin - oh, my God.... (slowly check pink in floats to Nil, and in No.1 Batten to  $\frac{1}{4}$ .)

Scene 3.

As for scene 2.

Cue: - Diana: Perhaps we had better say half-pst seven, Venning.. (Exit Venning) -(Slowly check down floats and battens slightly, to curtain)

ACT II.

Scene 1.

Floats: Amber  $\frac{3}{4}$ , pink  $\frac{1}{2}$ , blue  $\frac{1}{4}$ .  
No. 1 Batten Amber full, pink  $\frac{1}{2}$ , white  $\frac{1}{4}$ .  
No. 2 Batten: Amber  $\frac{1}{2}$ , pink  $\frac{1}{4}$ .  
Spot Batten: Acting areas, mingled straw and No 7 pink.  
Exterior cloth: Batten, amber and white,  $\frac{1}{2}$ . Flood straw and white (Frost).  
O.P. Flood: (through R. window) Straw and white(frost)  
Interior (hall) backing: Amber and white lengths.

Scene 2.

As for Scene 1, but slightly checked and white in No. 1 Batten, OUT.  
Also white in O.P. flood, OUT.

Scene 3.

As for scene 2, except: Floats and No 1 Batten: Checked down by 1/8.  
Spot Batten: Gold and salmon pink. Table lamps: ON.  
Exterior Floods: Straw and No 4 amber (frost) checked down.  
O.P. Flood changed to No. 4 amber (frost)  
Interior (hall) backing: Amber lengths. Add No 51 gold from hanging lamp if desired.

Cues: 1. Diana:...will he ever tell me, Ernest? Shall I ever know... (Slowly check floats slightly.)

2. After Michael's final exit: Slowly check exterior floods down, also No. 1 Batten slightly and No. 2 Batten to 1/8.

---

Note. - The above lighting plot is a basis suggested for limited installations. It may be elaborated as desired where the resources permit.

"THE YEARS BETWEEN"

Property Plot:

- 1 Tray wooden 18X12 inches.
- 1 Tray, silver oval, fancy gallery
- 1 Tray, wood and chrome corners
- 1 Salver, plain silver.
- 1 Salver, embossed edged, fancy silver,
- 1 Muffin dish, silver (with sconws)
- 1 Table Cloth (in drawer of cabinet)
- 1 Coffee Pot, silver.
- 1 Coffe pot, blue.
- 1 Jug, milk, silver.
- 1 Sugar basin, silver.
- 1 Cigarettes box, silver on copper (on desk) 1 ditto on table.
- 1 Cigarette box, engraved lid (on mantelpiece)
- 3 knives small white handles,
- 1 knife desert,
- 1 Pair sugar tongs,
- 4 coffee spoons.
- 2 Teaspoons,
- 1 bottle of champagne.
- 12 sherry glasses.
- 4 Whisky glasses, goblet shape,
- 1 sherry decanter, fancy.
- 1 Decanter, whisky, hobnail.
- 1 Bowl wooden.
- 3 cups and saucers, coffee, blue hand.
- 3 cups and saucers, tea, brown and cream.
- 3 cups and saucers, coffe green stripe.
- 4 plates, tea, small brown and cream.
- 2 cups and saucers, green and white.
- 1 plate, bread and butter, brown and cream.
- 1 cake stand, with cake.
- 1 basin sugar, brown and cream.
- 1 Jug milk, brown and cream.
- 1 Fishing rod
- 5 books, assorted (see descriptions) for Robin and Michael
- 3 books(old). (See descriptions) For Robin and Michael
- 18 additional real books, on table and floor.
- About 30 real books on shelves - the rest to be book backs.
- 1 suitcase, leather.
- 2 jugs, (glass)
- 1 Reel (fishing)
- 3 plates (dinner)
- 1 Glass dish
- 1 White rose bowl (on the table)
- 1 Knitting bag
- 4 Index Files )
- 2 Wire letter trays) (On the table)
- Variuous papers, letters, etc.
- 1 Teapot, (brown)
- 1 Honeypot (earthenware)
- 3 Ashtrays (silver) } (On tables c. and l., and on
- 2 Ashtrays, green block small size } mantelpiece)
- 1 Pewter photo frame
- 1 Silver photo frame (Michael, on the table)
- 1 Inkstand, silver, single bottle (on the table)
- 1 Tobacco jar (On the mantelpiece)
- 1 Waste paper basker (under the desk)
- 1 Atlas (Robin)
- 1 Dish, nickel, 18 inches, (plain)
- 1 Ashtray, green glass triangle (on desk)
- 1 Globe on stand (on the floor Act . Scene 1. Later on the table.
- 1 duster in desk drawer.
- 2 Beer tankards.
- 1 Wedding ring, 9 carat gold (Diana)
- 1 Clock carriage (Silver) on desk.
- 1 Stationery rack. 6 glasses sherry.
- Radiogram, effects.
- Dog bark.
- 1 Blotter (on desk)
- 1 Inkstand, silver and 1 bott square.
- 1 Bell, desk, silver
- Clock, chime.

"THE YEARS BETWEEN"

LIGHTING PLOT.

ACT I.

Scene 1.

Floats: Amber, pink, blue, all at  $\frac{1}{4}$ .  
No. 1 Batten: ditto at  $\frac{1}{2}$   
No. 2 Batten ditto at  $\frac{1}{4}$   
Exterior cloth: Batten and ground row, amber and blue, checked down. Flood on the same, No. 17 Steel (frost) checked down.  
O.P.Flood: (Through r. window) No. 4 amber lengths at  $\frac{1}{2}$   
(The lighting is slightly checked, slowly, early in the scene.  
Batten spots No. 51 gold, on acting areas as the lamps are switched on.)

Scene 2.

Floats: Amber, pink, and blue, at  $\frac{1}{2}$   
No 1 Batte: Ditto at  $\frac{3}{4}$ .  
No. 2 Batten: Ditto at  $\frac{1}{4}$ .  
Spot Batten: No. 51 gold (frost) and salmon pink (frost) on acting areas at  $\frac{1}{2}$   
Exterior cloth: Batten and ground row, amber and blue at  $\frac{1}{2}$   
Flood on the same, No. 4 (frost) at  $\frac{1}{2}$   
O.P.Flood: (Through window) No. 4 amber (Frost) at  $\frac{1}{2}$   
Interior(hall) backing: Amber lengths at  $\frac{1}{2}$

Cues: 1. After exit of Vicar and wife: Slowly check floats to  $\frac{1}{4}$ , and No. 1 Batten to  $\frac{1}{2}$   
2. After - Diana: One of us has got to tell Robin - oh, my God.... (slowly check pink in floats to Nil, and in No.1 Batten to  $\frac{1}{4}$ .)

Scene 3.

As for scene 2.

Cue: - Diana: Perhaps we had better say half-pst seven, Venning.. (Exit Venning) -(Slowly check down floats and battens slightly, to curtain)

ACT II.

Scene 1.

Floats: Amber  $\frac{3}{4}$ , pink  $\frac{1}{2}$ , blue  $\frac{1}{4}$ .  
No. 1 Batten Amber full, pink  $\frac{1}{2}$ , white  $\frac{1}{4}$ .  
No. 2 Batten: Amber  $\frac{1}{2}$ , pink  $\frac{1}{4}$ .  
Spot Batten: Acting areas, mingled straw and No 7 pink.  
Exterior cloth: Batten, amber and white,  $\frac{1}{2}$ . Flood straw and white (Frost).  
O.P. Flood: (through R. window) Straw and white(frost)  
Interior (hall) backing: Amber and white lengths.

Scene 2.

As for Scene 1, but slightly checked and white in No. 1 Batten, OUT.  
Also white in O.P. flood, OUT.

Scene 3.

As for scene 2, except: Floats and No 1 Batten: Checked down by 1/8.  
Spot Batten: Gold and salmon pink. Table lamps: ON.  
Exterior Floods: Straw and No 4 amber (frost) checked down.  
O.P.Flood changed to No. 4 amber (frost)  
Interior (hall) backing: Amber lengths. Add No 51 gold from hanging lamp if desired.

Cues: 1. Diana:...will he ever tell me, Ernest? Shall I ever know... (Slowly check floats slightly.)

2. After Michael's final exit: Slowly check exterior ~~fx~~ floods down, also No. 1 Batten slightly and No. 2 Batten to 1/8.

-----

Note. - The above lighting plot is a basis suggested for limited installations. It may be elaborated as desired where the resources permit.