



L-Università
ta' Malta

MATRICULATION AND SECONDARY EDUCATION CERTIFICATE
EXAMINATIONS BOARD

**SECONDARY EDUCATION APPLIED CERTIFICATE LEVEL
2022 SUPPLEMENTARY SESSION**

SUBJECT: **Media Literacy Education**
PAPER NUMBER: Synoptic – Unit 1
DATE: 31st October 2022
TIME: 8:30 a.m. to 10:35 a.m.

**THIS PAPER SHOULD BE RETURNED TO THE INVIGILATOR
AFTER THE EXAMINATION.**

For examiners' use only:

Question	1	2	3	4	5	6	Total
Score							
Maximum	6	8	12	8	8	8	50

Answer **ALL** questions in the space provided. You may answer either in English or in Maltese.

Scenario 1

- Sophie is passionate about photography.
- She started working as an assistant photographer after successfully completing her Media Literacy Education course.

Question 1

K-1 (6 marks)

Sophie was given a SLR camera to familiarise herself with the parts and settings.

a. Label the **TWO** parts indicated by the arrows of the following photographic camera.



(Source: <https://www.pngwing.com/en/free-png-passq>)

Part i: _____ (1)

Part ii: _____ (1)

b. Outline the function of the following camera parts.

i. Memory card slot:

_____ (1)

ii. Mode dial:

_____ (1)

c. Differentiate between a mirror SLR and a micro 4/3 camera.

_____ (2)

6

Question 2

K-3 (8 marks)

a. List **FOUR** common supports for photographic cameras.

- Support 1: _____ (0.5)
- Support 2: _____ (0.5)
- Support 3: _____ (0.5)
- Support 4: _____ (0.5)

b. Outline the following **TWO** parts of the camera support system and their respective function.

i. The head:

_____ (0.5)

Function of the head:

_____ (0.5)

ii. The bubble level:

(0.5)

Function of the bubble level:

(0.5)

c. Describe **TWO** proper uses and **TWO** precautions needed when operating a camera on a support system.

(4)

8

Question 3

C-1 (12 marks)

Sophie uses aperture priority mode for the majority of her pictures.

a. State **TWO** other shooting modes found in digital cameras and their use, apart from aperture priority.

Shooting mode 1: _____ (1)

Shooting mode 1 use:

(1)

Shooting mode 2: _____ (1)

Shooting mode 2 use:

(1)

b. Discuss how the **TWO** shooting modes stated in Question 3a will alter the photographic process.

Shooting mode 1: _____

(2)

Shooting mode 2: _____

(2)

c. Sophie loves black and white photography. She is inspired by the French photographer Henri Cartier-Bresson’s work.

Justify the proper setup to achieve a photo similar to the one shown in Figure 1, in terms of the following **FOUR** aspects:

- Lens
- Camera support
- Shooting mode
- Camera settings

This question continues on next page.



Figure 1: "Hyères, France" by Henri Cartier-Bresson (1932).

Question 4

K-4 (8 marks)

a. Filters and lens attachments are accessories commonly found in a camera kit bag. Name **TWO** other accessories commonly found in a camera kit bag.

Camera Accessory 1: _____ (1)

Camera Accessory 2: _____ (1)

b. Outline the use of the **TWO** camera accessories mentioned in Question 4a.

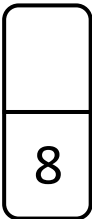
Use of Camera Accessory 1: _____
 _____ (1)

Use of Camera Accessory 2: _____
 _____ (1)

c. Describe the use of the following **TWO** filters and **TWO** lens attachments in photography.

Filters	Lens Attachments
Close-up Neutral Density (ND)	Telephoto Lens hood

_____ (4)



Question 5

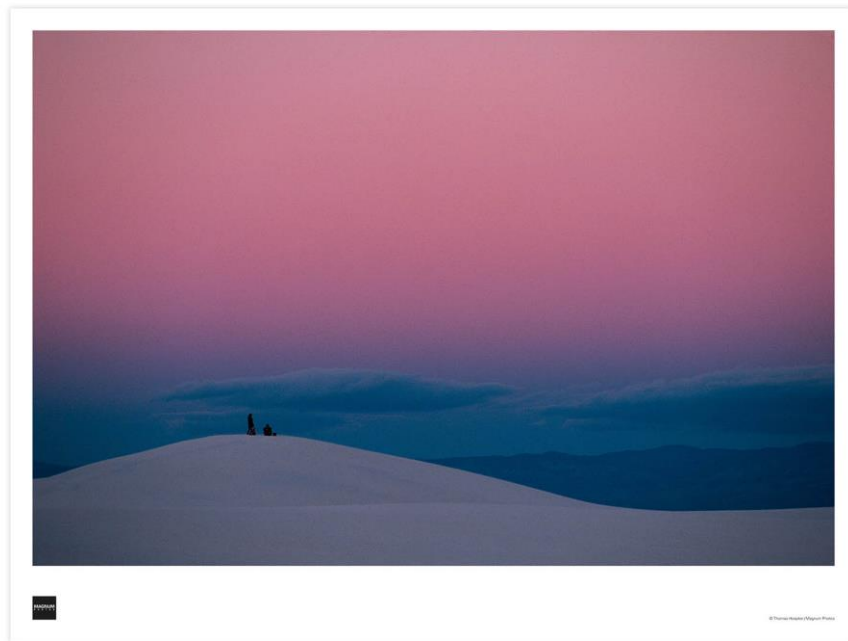
K-5 (8 marks)

a. List **TWO** different camera angles.

Camera Angle 1: _____ (1)

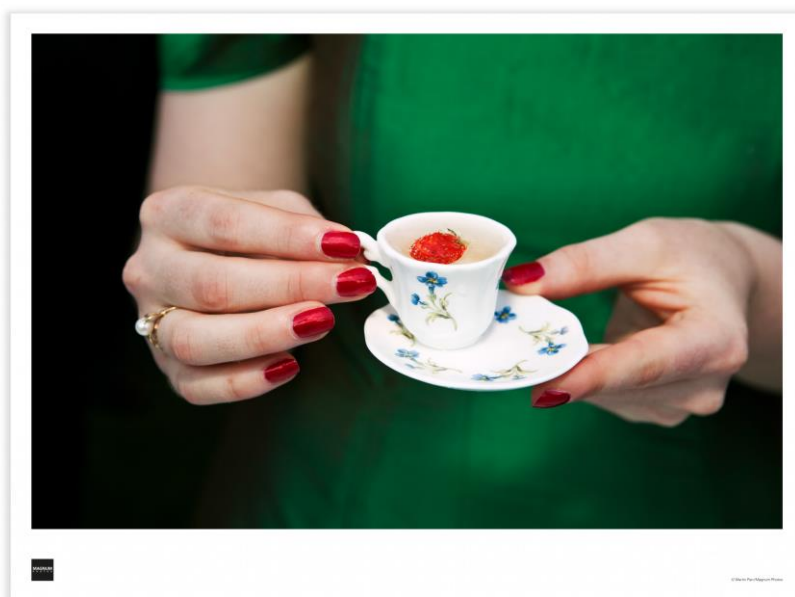
Camera Angle 2: _____ (1)

b. Identify the **FOUR** shot sizes in the following photographs.



*Title: White Sands National Park. New Mexico, USA
Credit: Thomas Hoepker (1990)/Magnum Photos*

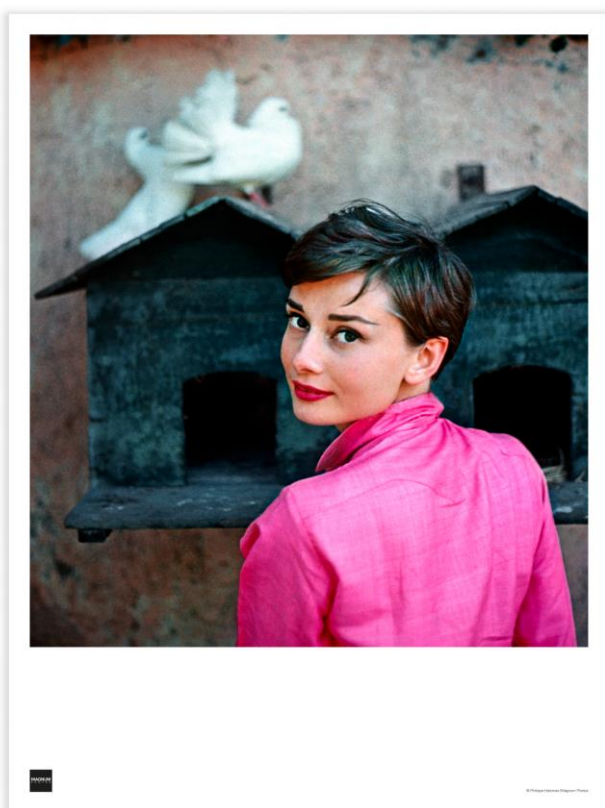
i. _____ (0.5)



Title: West Sussex. England
Credit: Martin Parr (2010)/Magnum Photos

ii. _____

(0.5)



Title: Audrey Hepburn. Italy
Credit: Philippe Halsman (1955)/Magnum Photos

iii. _____

(0.5)



*Title: Ferry to Staten Island. New York
Credit: Raymond Depardon (1981)/Magnum Photos*

iii. _____

(0.5)

c. Describe composition and the rule of thirds in photography.

(4) **8**

Question 6

K-7 (8 marks)

a. Define the following concepts of light:

Natural light:

(1)

Soft light:

(1)

b. Outline the following light equipment and setups used in photography.

Light stands:

(0.5)

Light Meter:

(0.5)

Low key lighting:

(0.5)

Top lighting:

(0.5)

This question continues on the next page.

DO NOT WRITE ABOVE THIS LINE

c. Describe the following light modifiers and their use in photography.

Umbrellas	Reflectors
-----------	------------

8

(4)