

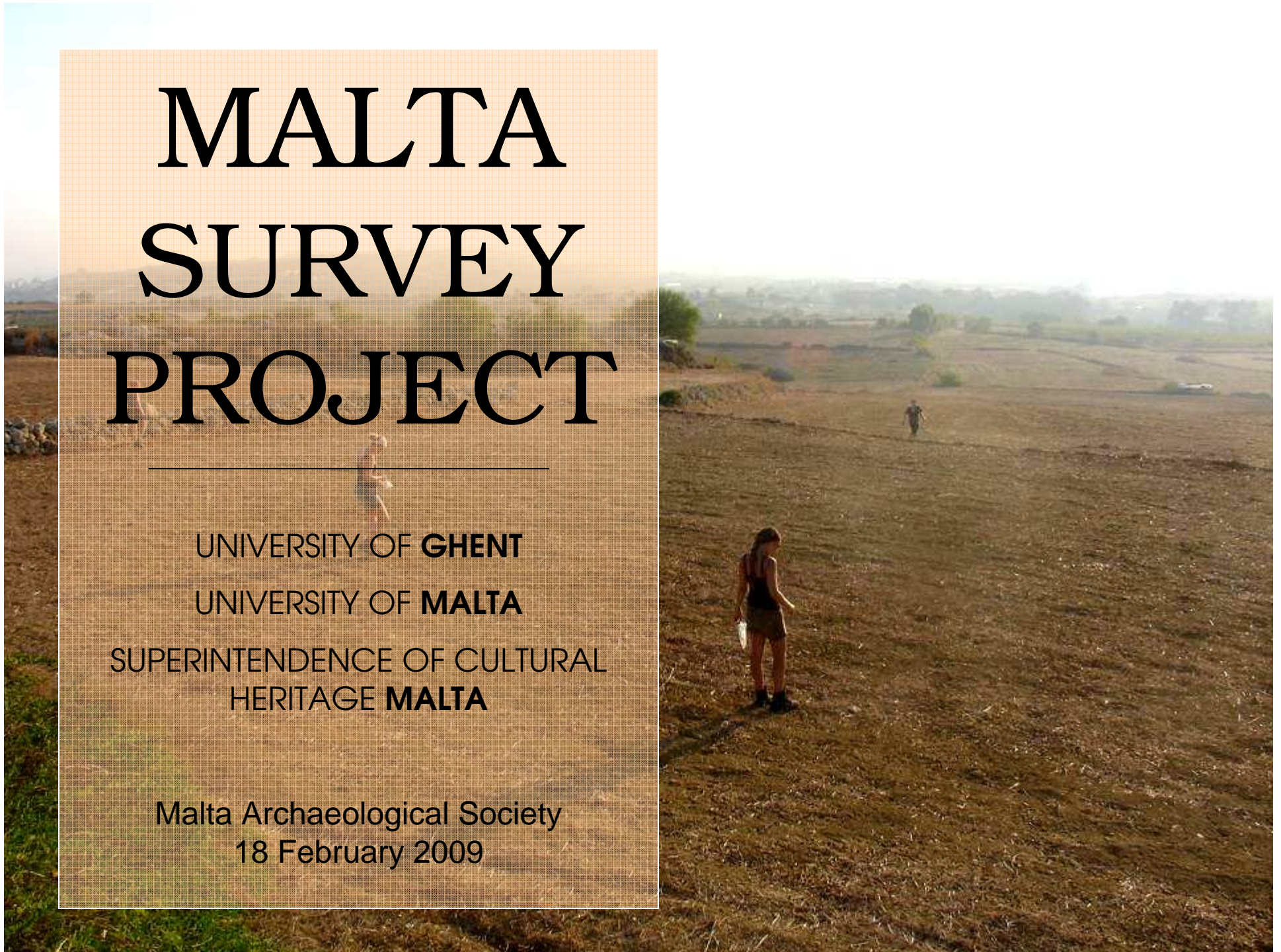
MALTA SURVEY PROJECT

UNIVERSITY OF **GHENT**

UNIVERSITY OF **MALTA**

SUPERINTENDENCE OF CULTURAL
HERITAGE **MALTA**

Malta Archaeological Society
18 February 2009

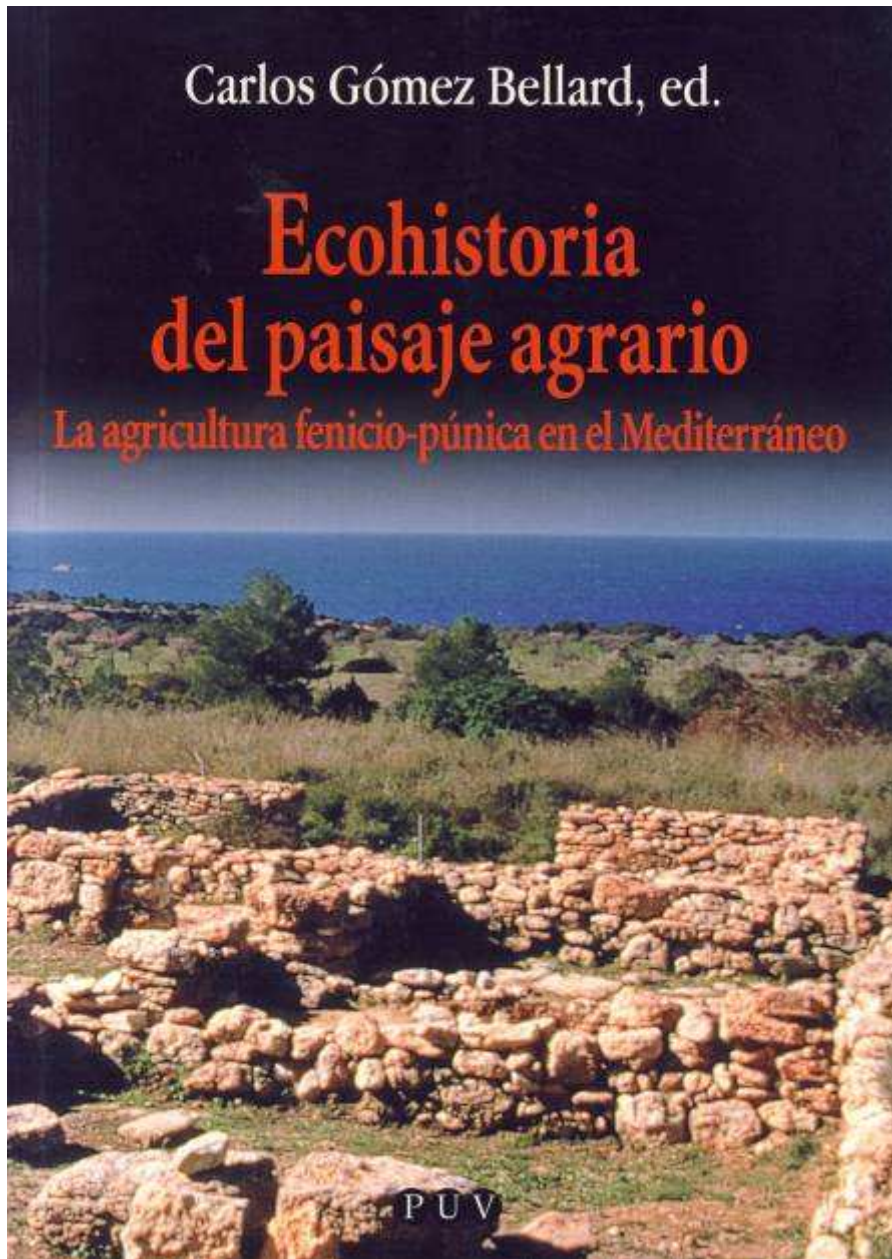


1

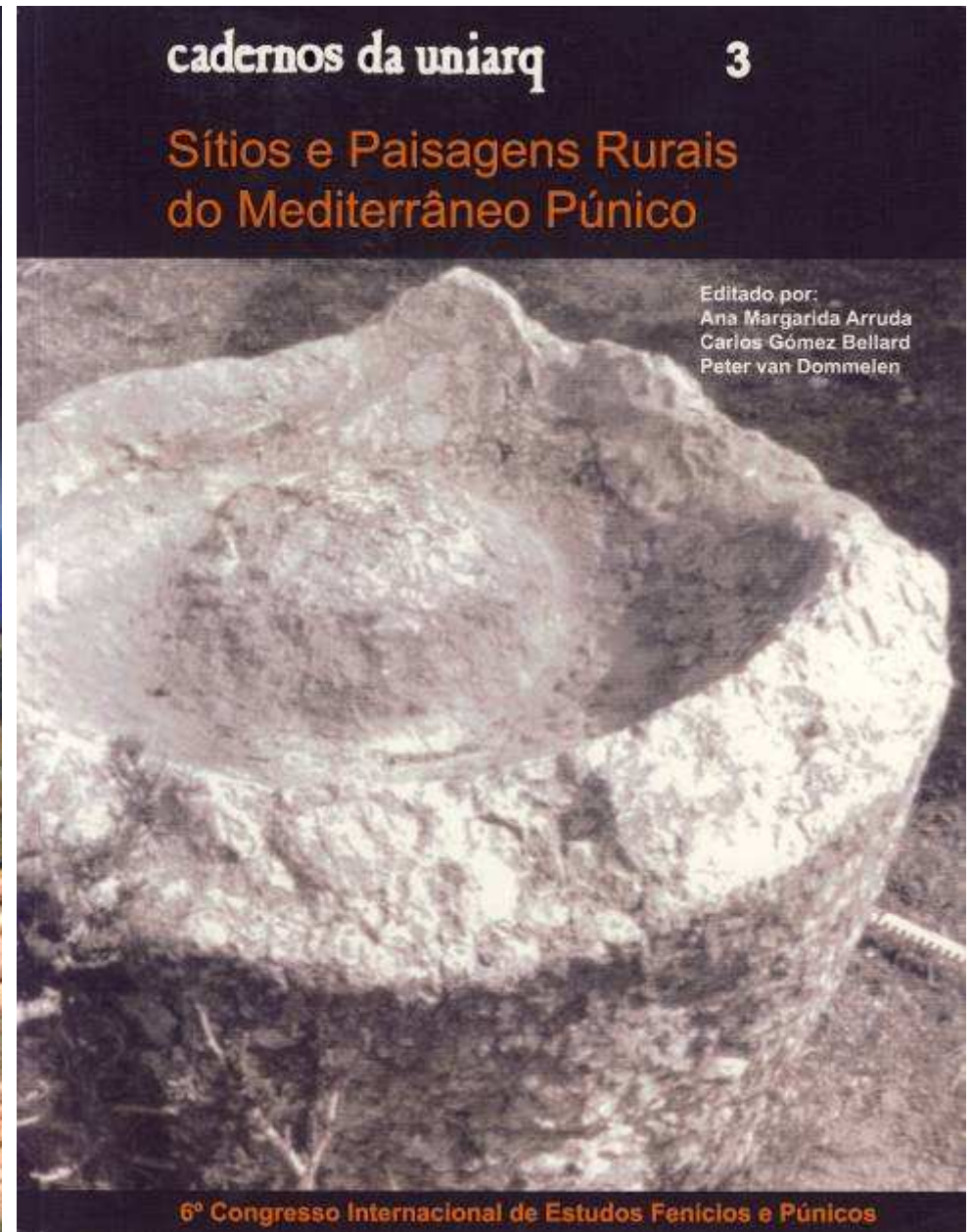
● The Malta Survey Project

SCOPE

- An intensive fieldwalking survey in a km-wide transect in northern Malta.



2003



2008

AIMS

1. Understand long-term development and exploitation of an island landscape using geomorphological study, systematic survey, geophysical prospection, and excavation – with an emphasis on the Punic period.



AIMS

2. Create a reference collection of reliable period-specific diagnostic sherds and fabrics to allow surface finds to be identified and dated even under conditions of severe abrasion.



AIMS

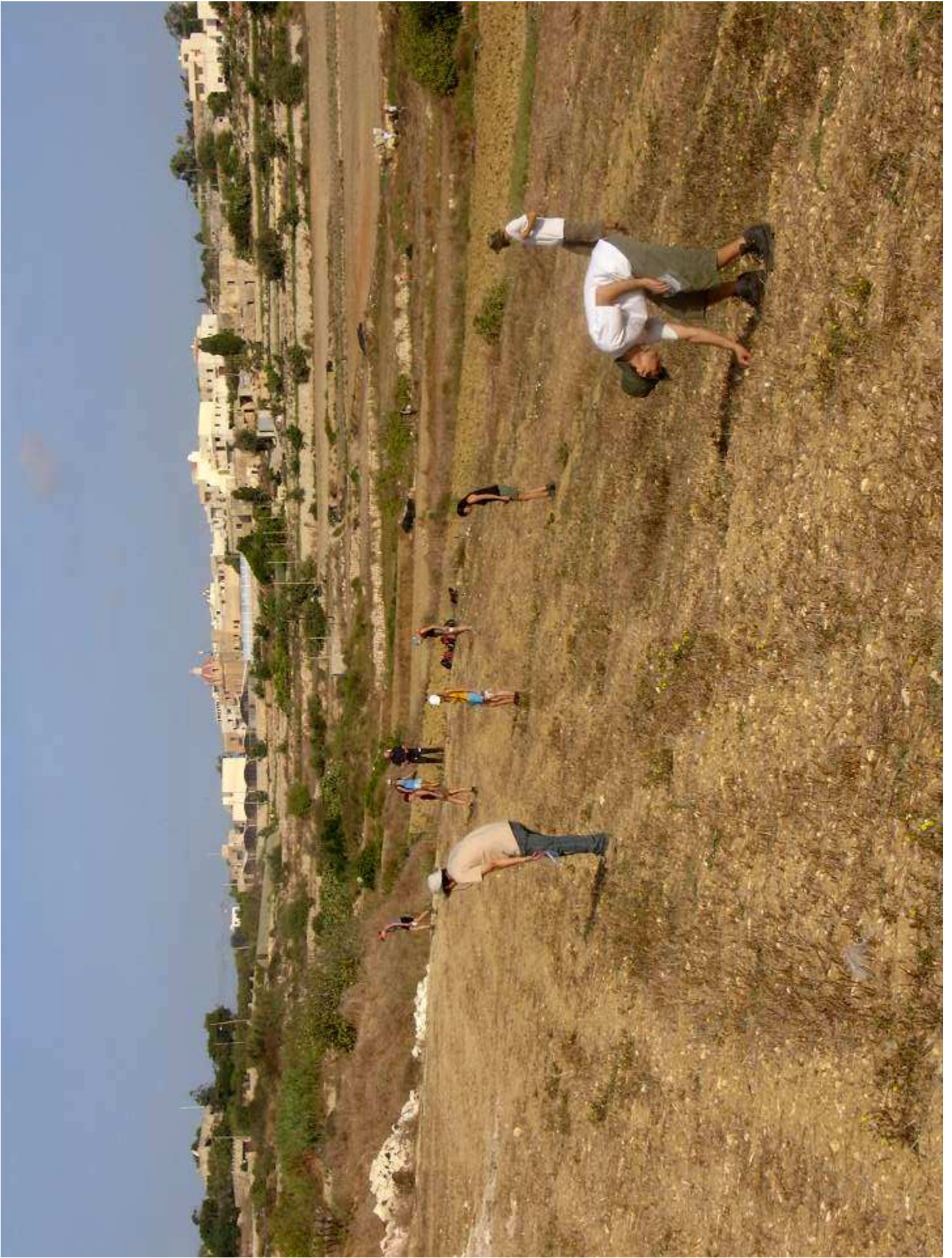
3. Provide students with training in fieldwalking methods and techniques, finds processing.



2.

•

Method



ridge = plateau + basin slopes

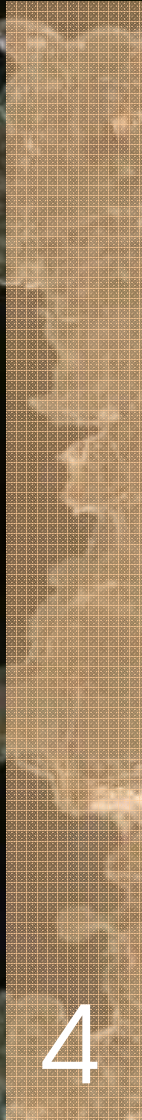
ridge = plateau + basin slopes

basin floor

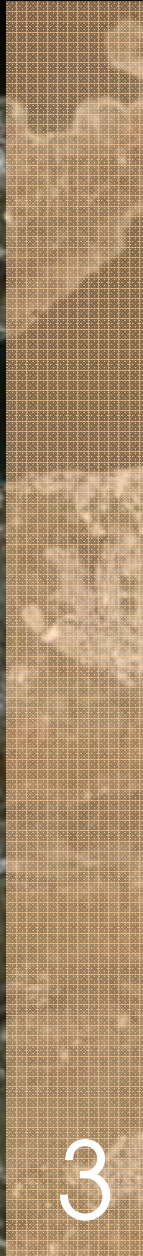
basin slope

topography

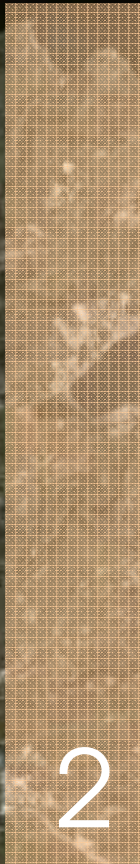
transect = 1 km wide



4



3

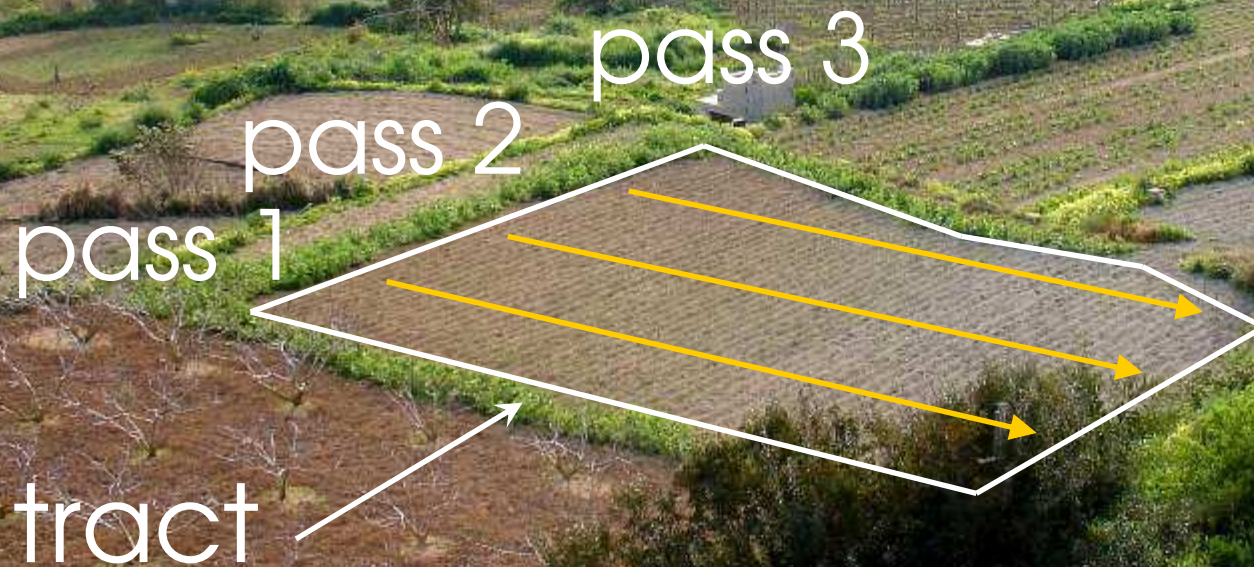


2



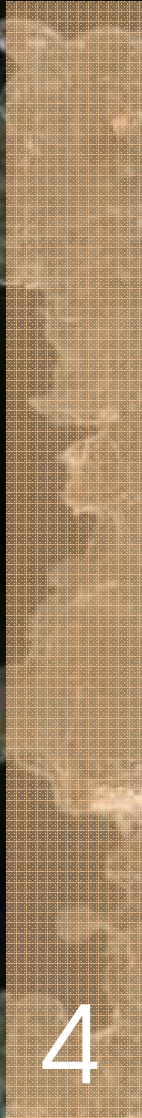
1

Passes are conducted against the contours,
following the slope uphill or downhill

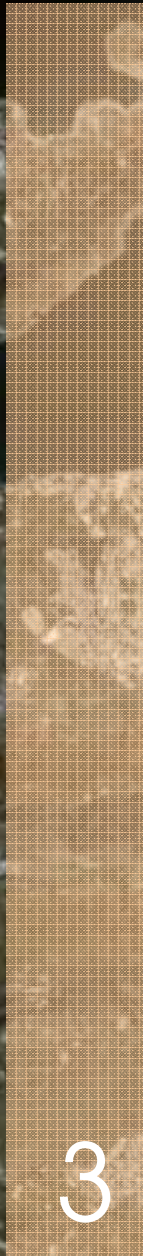


passes are 10 metres apart

transect = 1 km wide



4



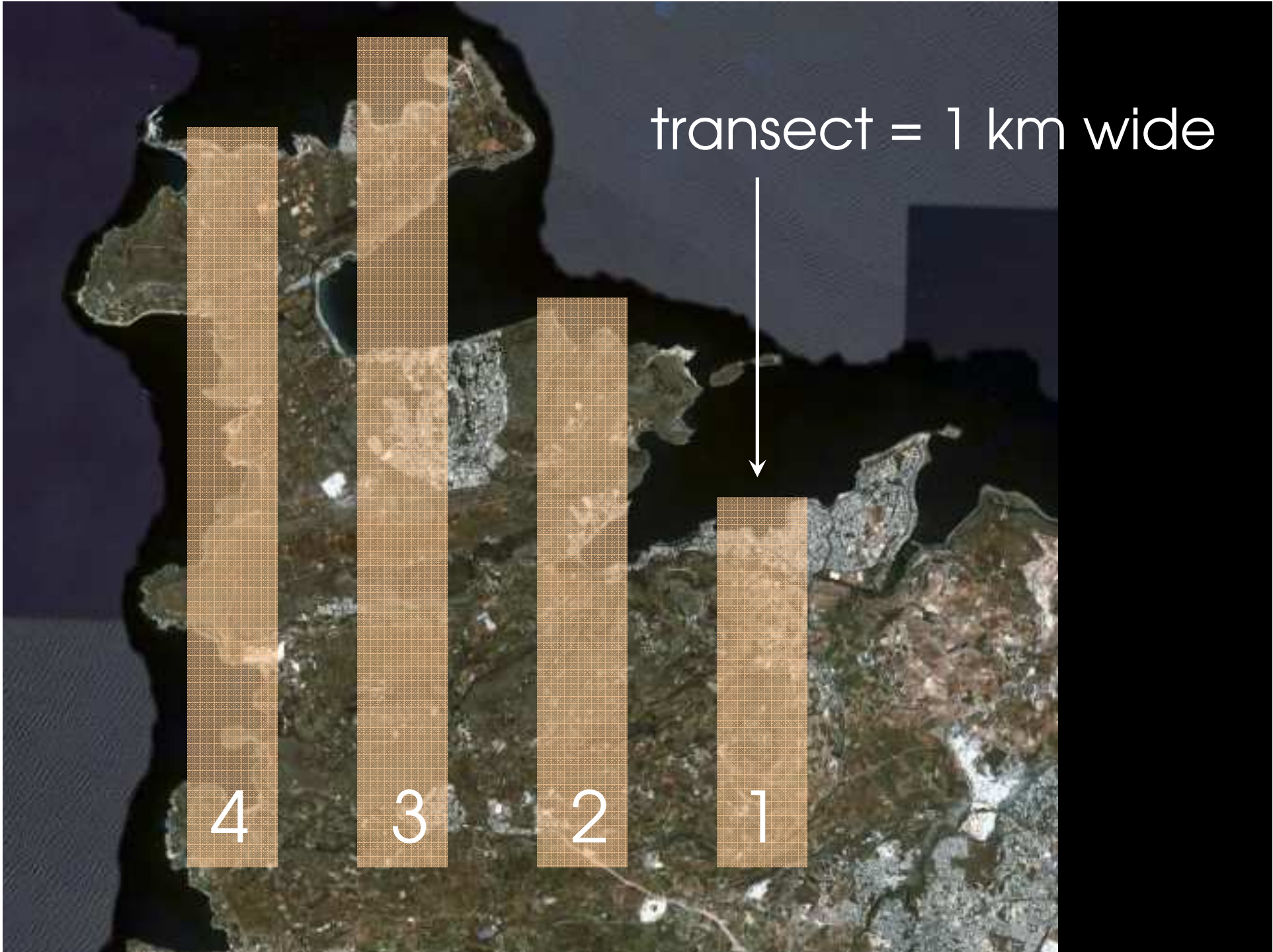
3



2



1



MALTA SURVEY PROJECT 2008

1 km wide transect, with individual tracts walked in September 2008



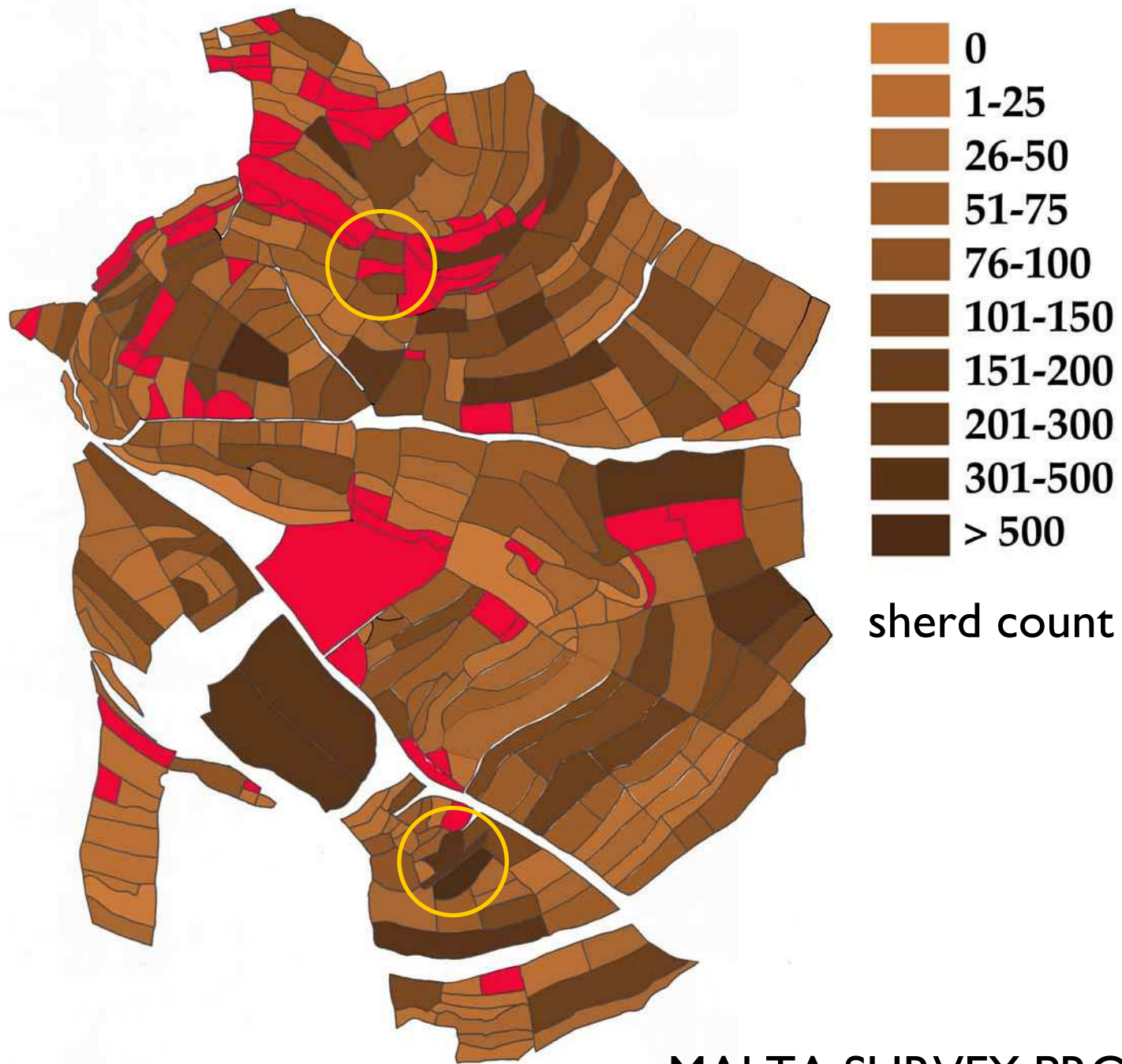


4

●

Results





MALTA SURVEY PROJECT 2008

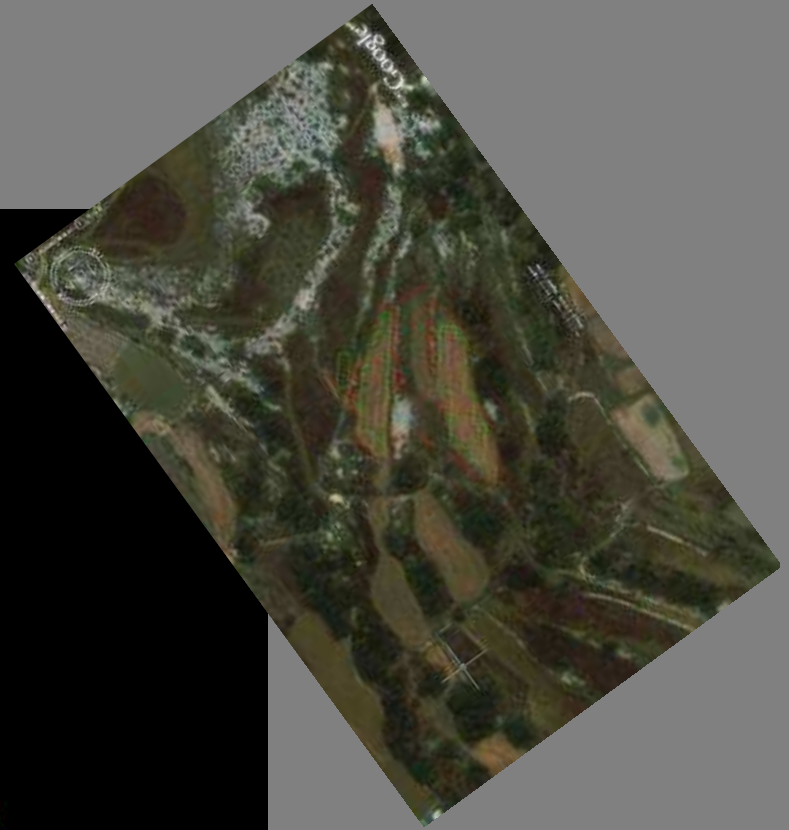
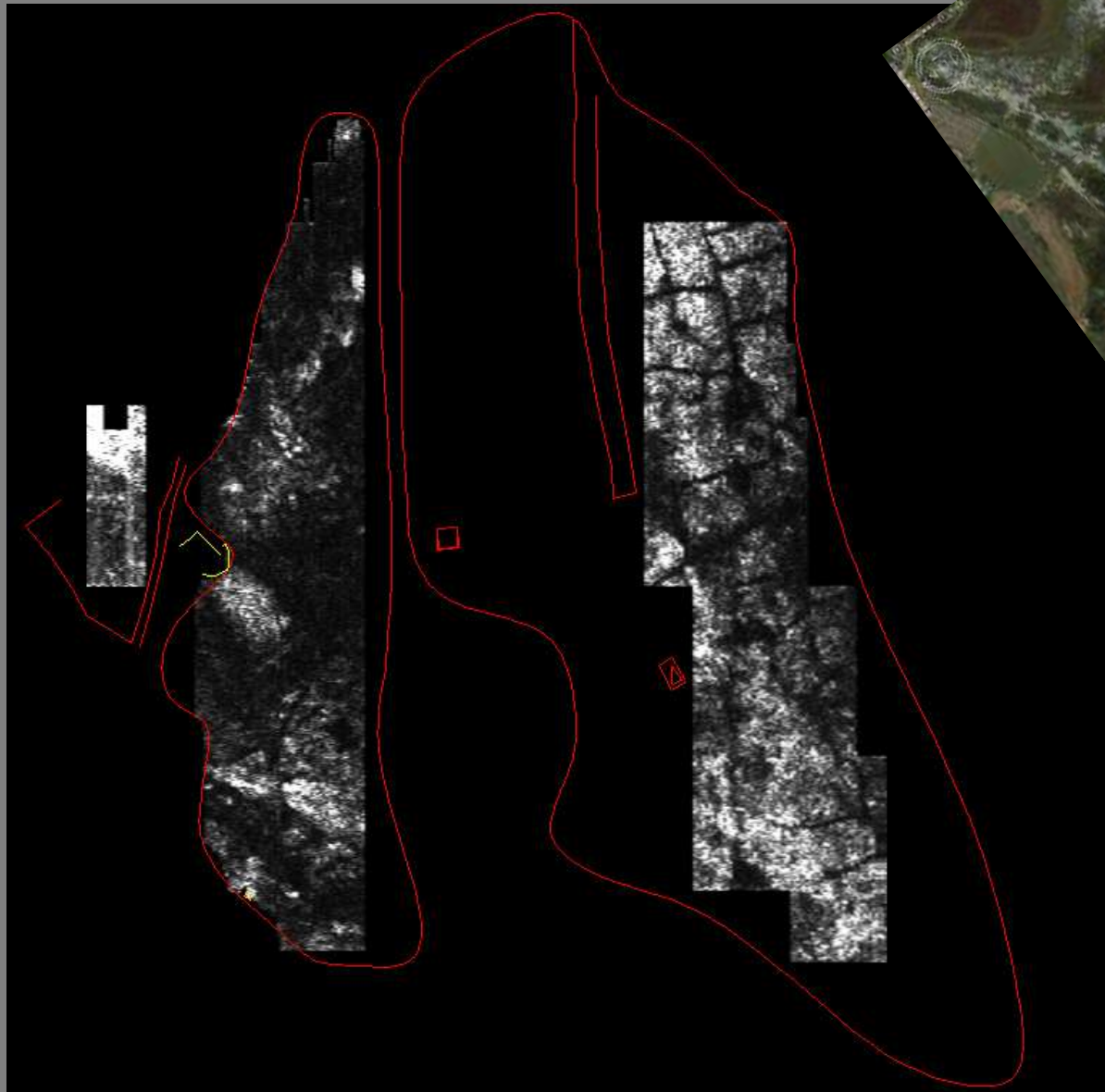
Bidnija area: two zones
(sites)
selected for geophysical
prospection with GPR
(66 x 70 and 22 x 45 m)
- Lieven Verdonck



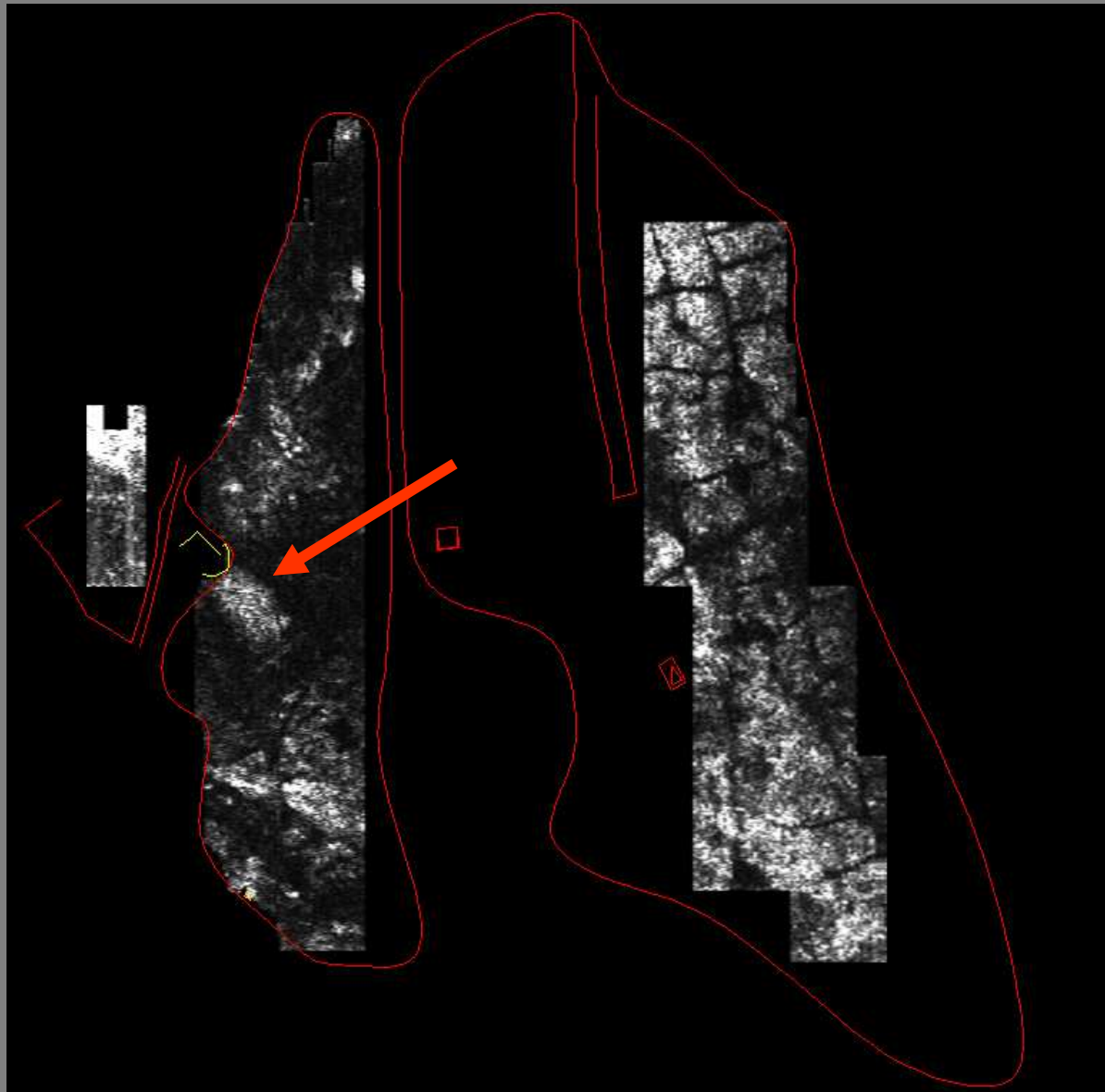


Zone I

Results: Zone I

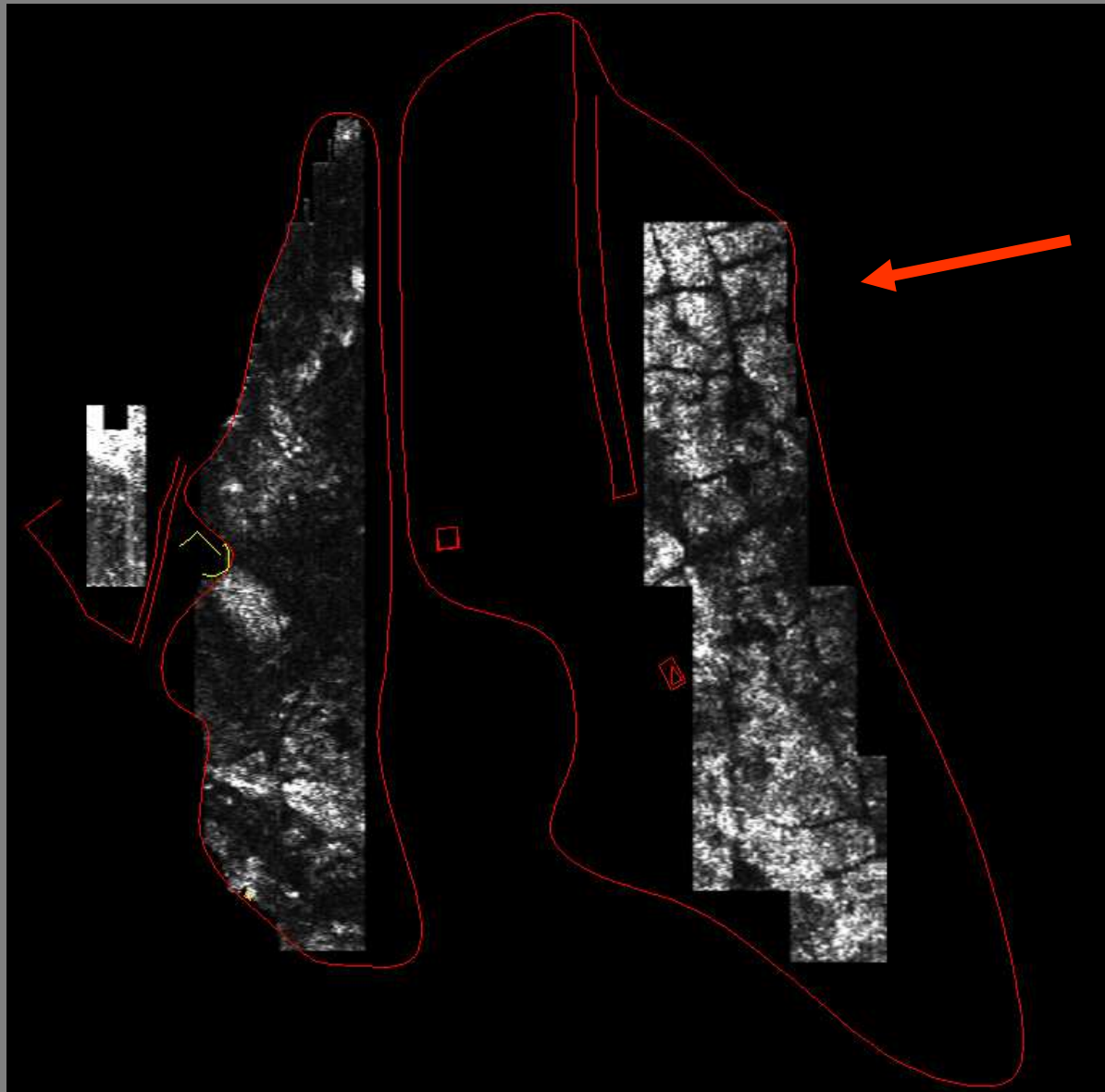


pulseEKKO PRO
Distance with line 0.05 m
Line distance 0.25 m
500 MHz antenna
Depth 0.65-0.70 m
Surface: 66 x 70 m



Interpretation Cistern

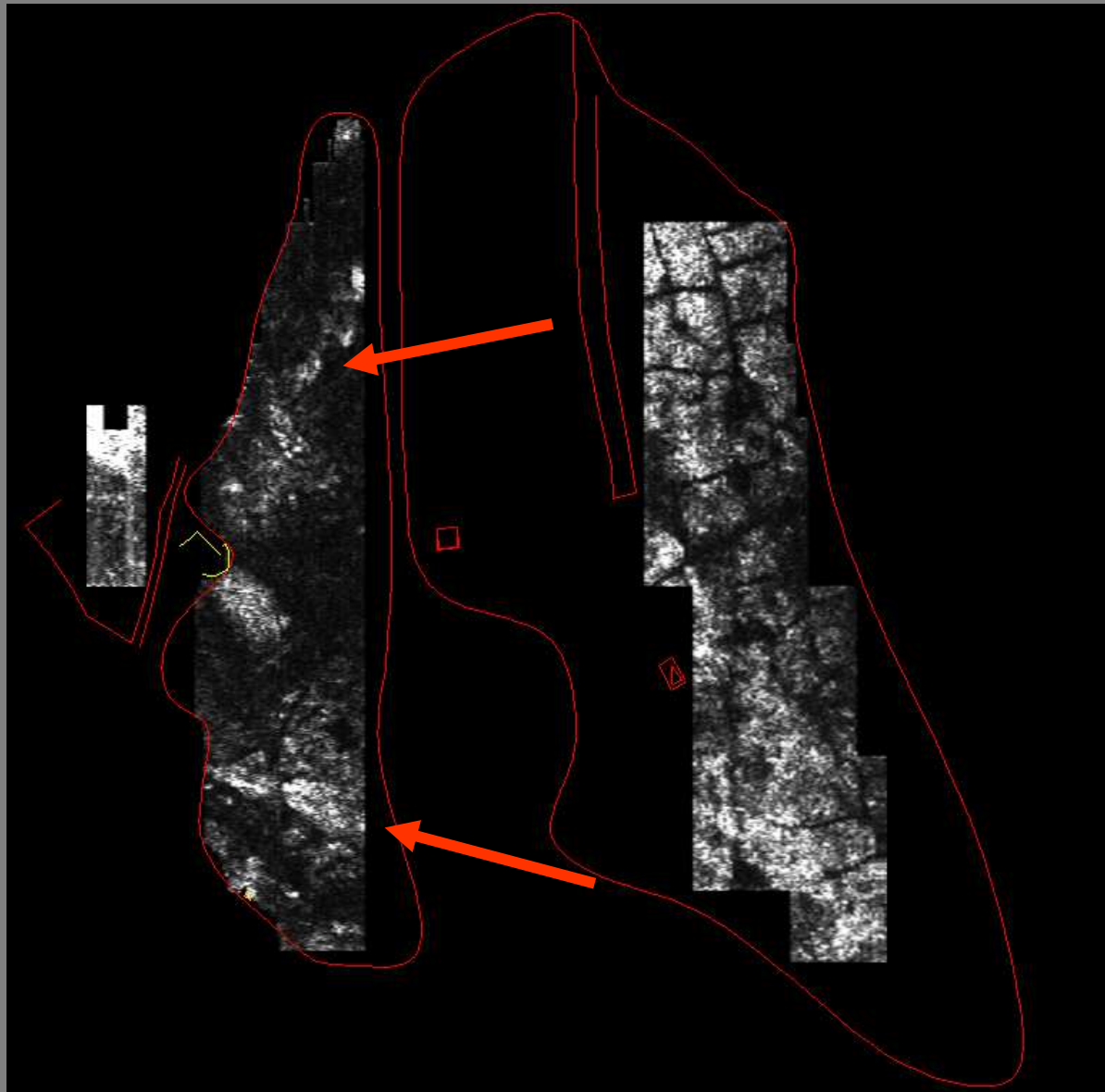
pulseEKKO PRO
Distance with line 0.05 m
Line distance 0.25 m
500 MHz antenna
Depth 0.65-0.70 m
Surface: 66 x 70 m



Interpretation
Cistern

**Channeling system
in bedrock**

pulseEKKO PRO
Distance with line 0.05 m
Line distance 0.25 m
500 MHz antenna
Depth 0.65-0.70 m
Surface: 66 x 70 m



Interpretation
Cistern

**Channeling system
in bedrock**

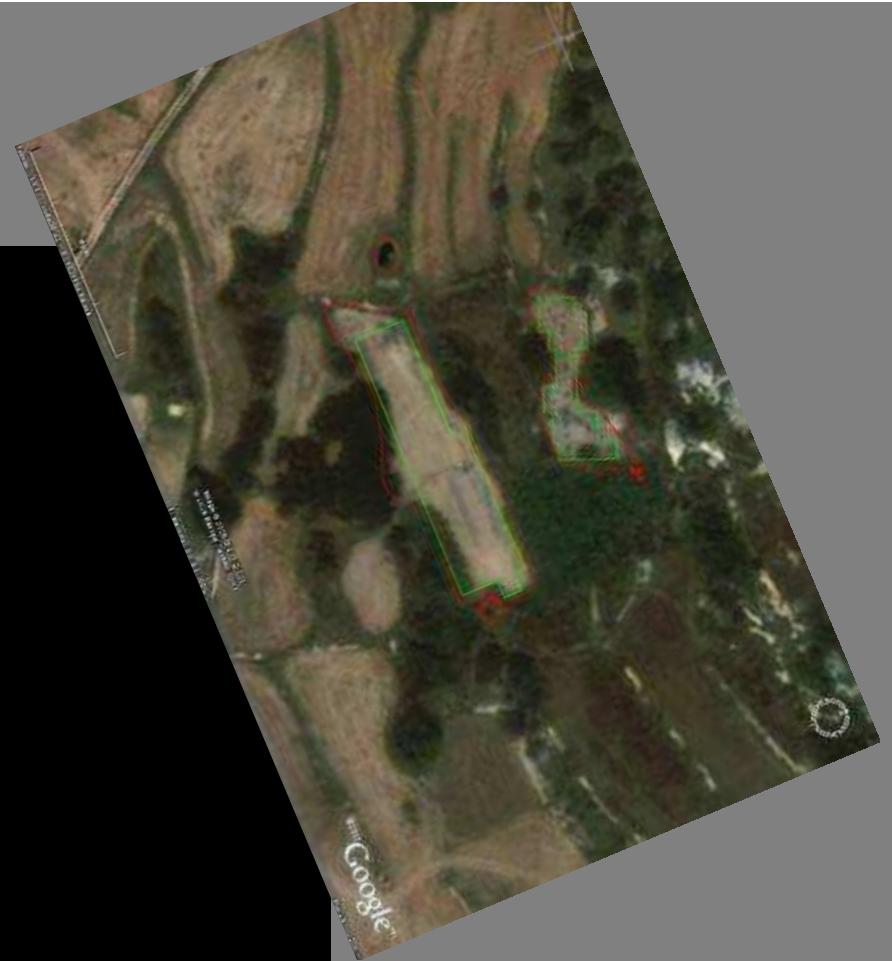
**Structures or natural
rock outcrops**

pulseEKKO PRO
Distance with line 0.05 m
Line distance 0.25 m
500 MHz antenna
Depth 0.65-0.70 m
Surface: 66 x 70 m

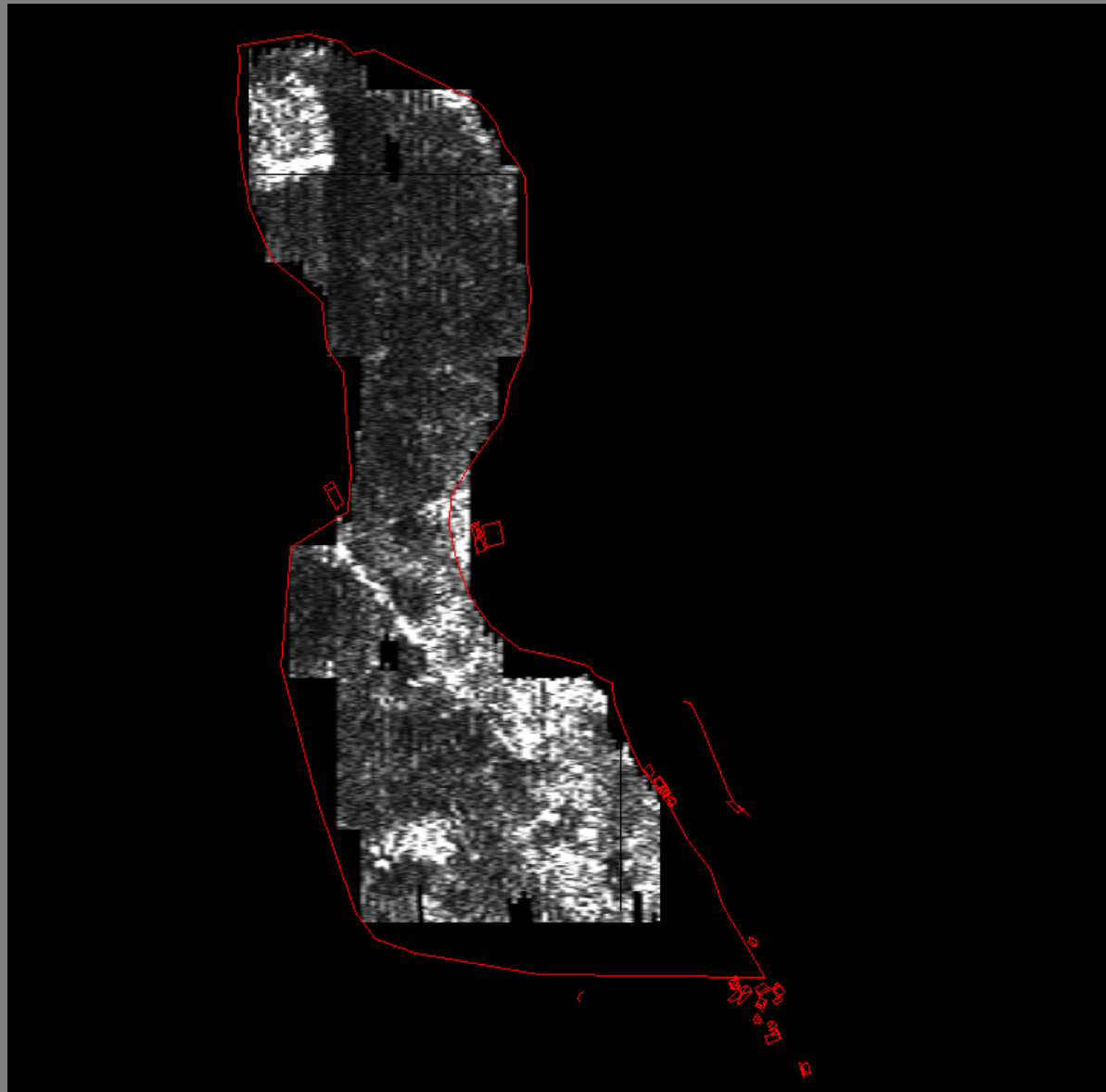


Zone 2

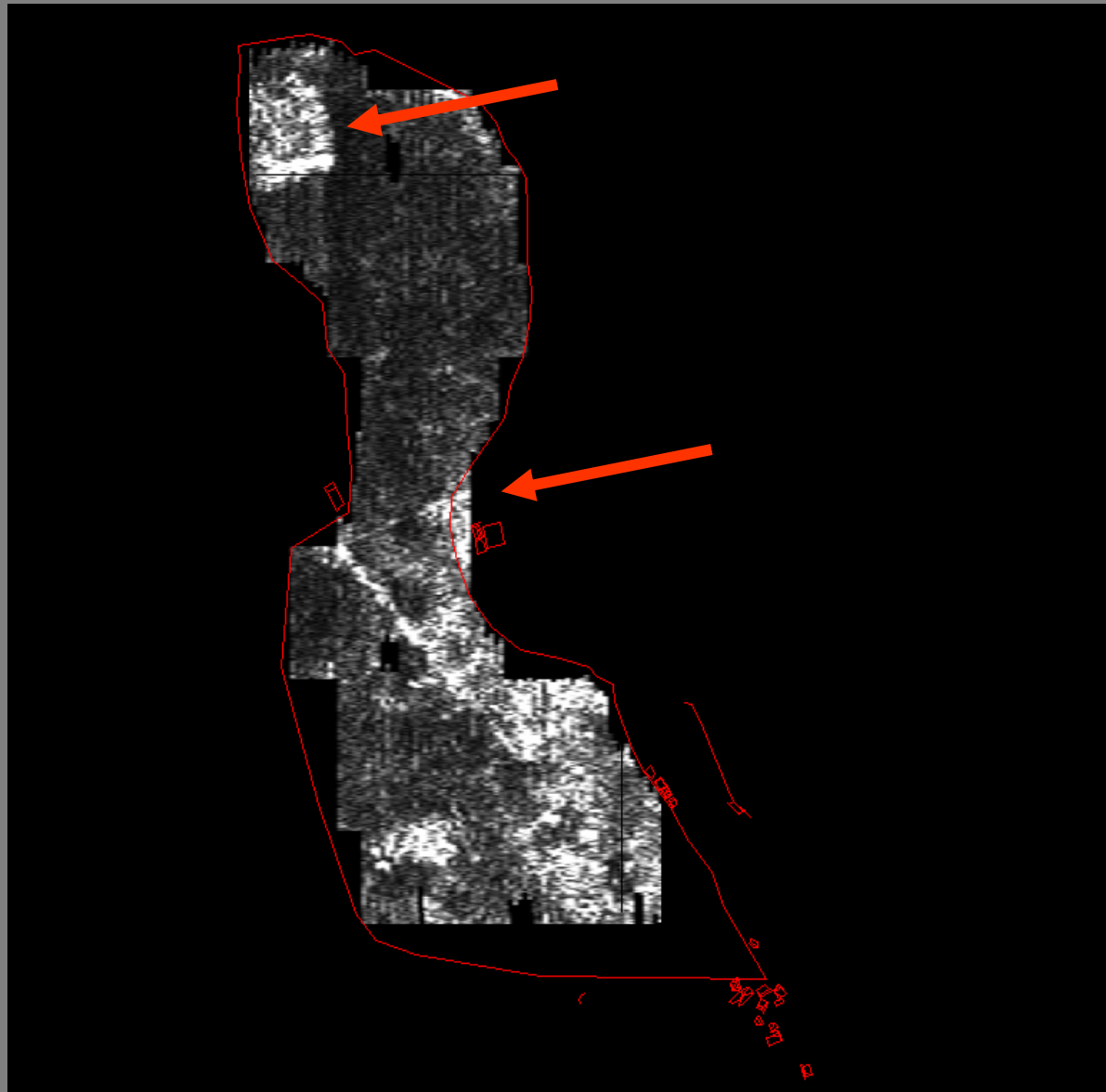
Results: zone 2



pulseEKKO PRO
Distance with line 0.05 m
Line distance 0.25 m
500 MHz antenna
Depth 0.55-0.60 m
Surface: 22 x 45 m



pulseEKKO PRO
Distance with line 0.05 m
Line distance 0.25 m
500 MHz antenna
Depth 0.55-0.60 m
Surface: 22 x 45 m

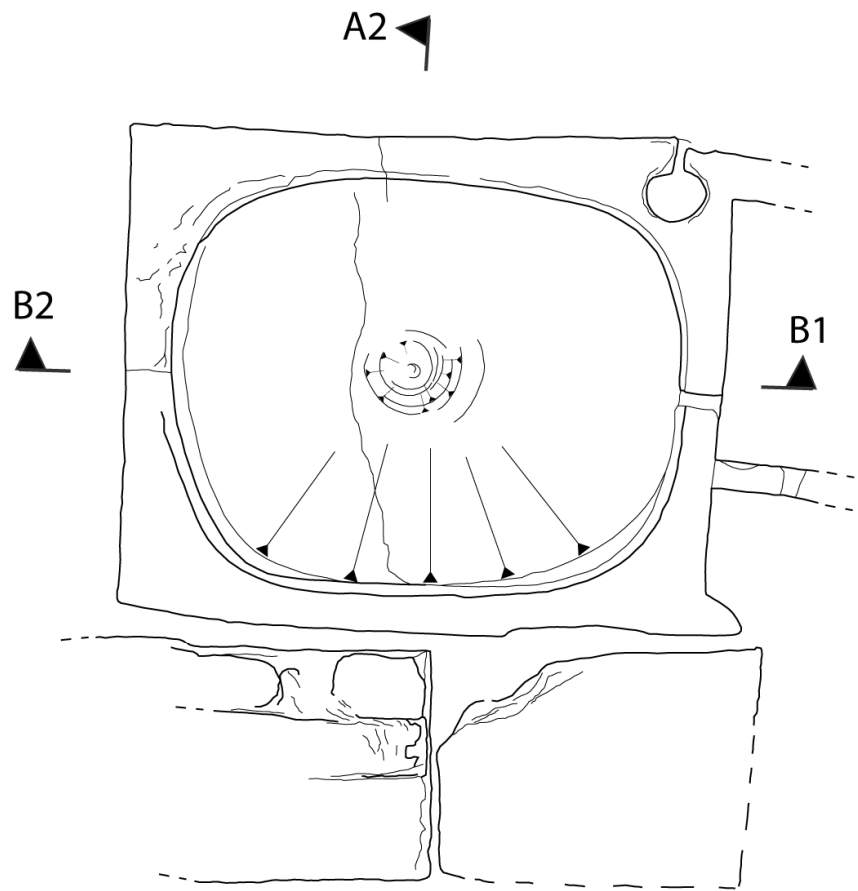


Interpretation
**Probably structures
related to rural
installation (villa?)**

pulseEKKO PRO
Distance with line 0.05 m
Line distance 0.25 m
500 MHz antenna
Depth 0.55-0.60 m
Surface: 22 x 45 m

MSP2008/I/B21/F1



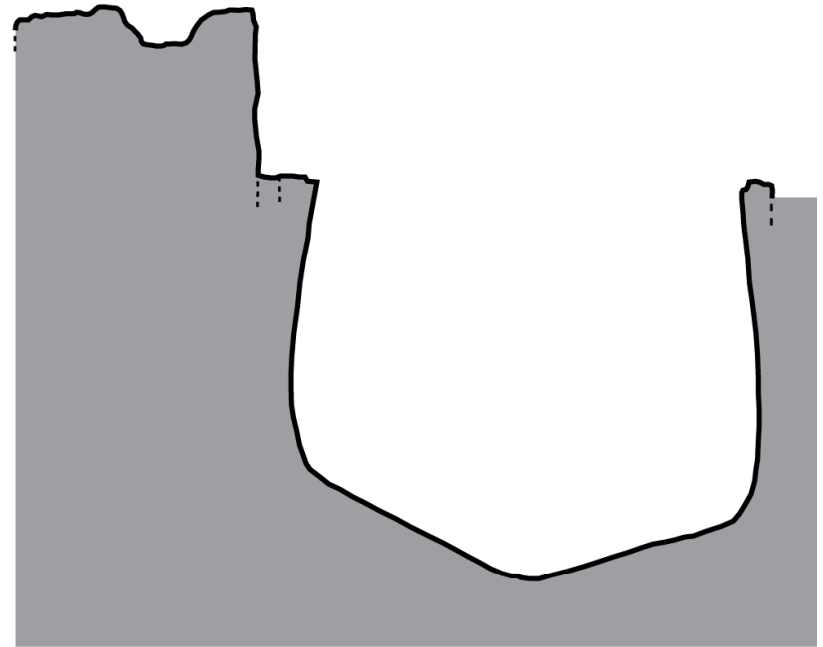


A1

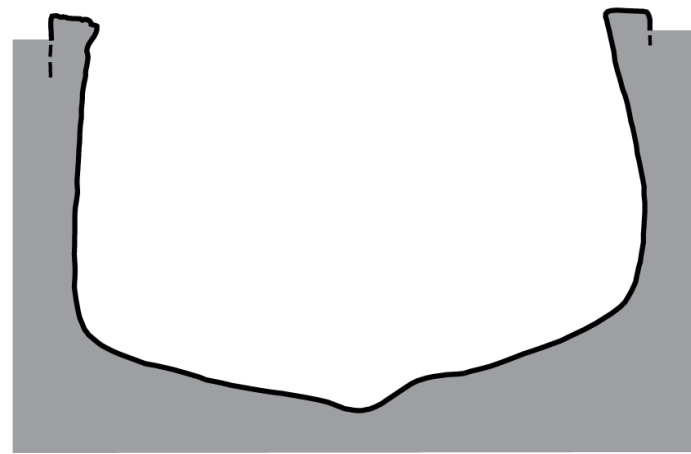


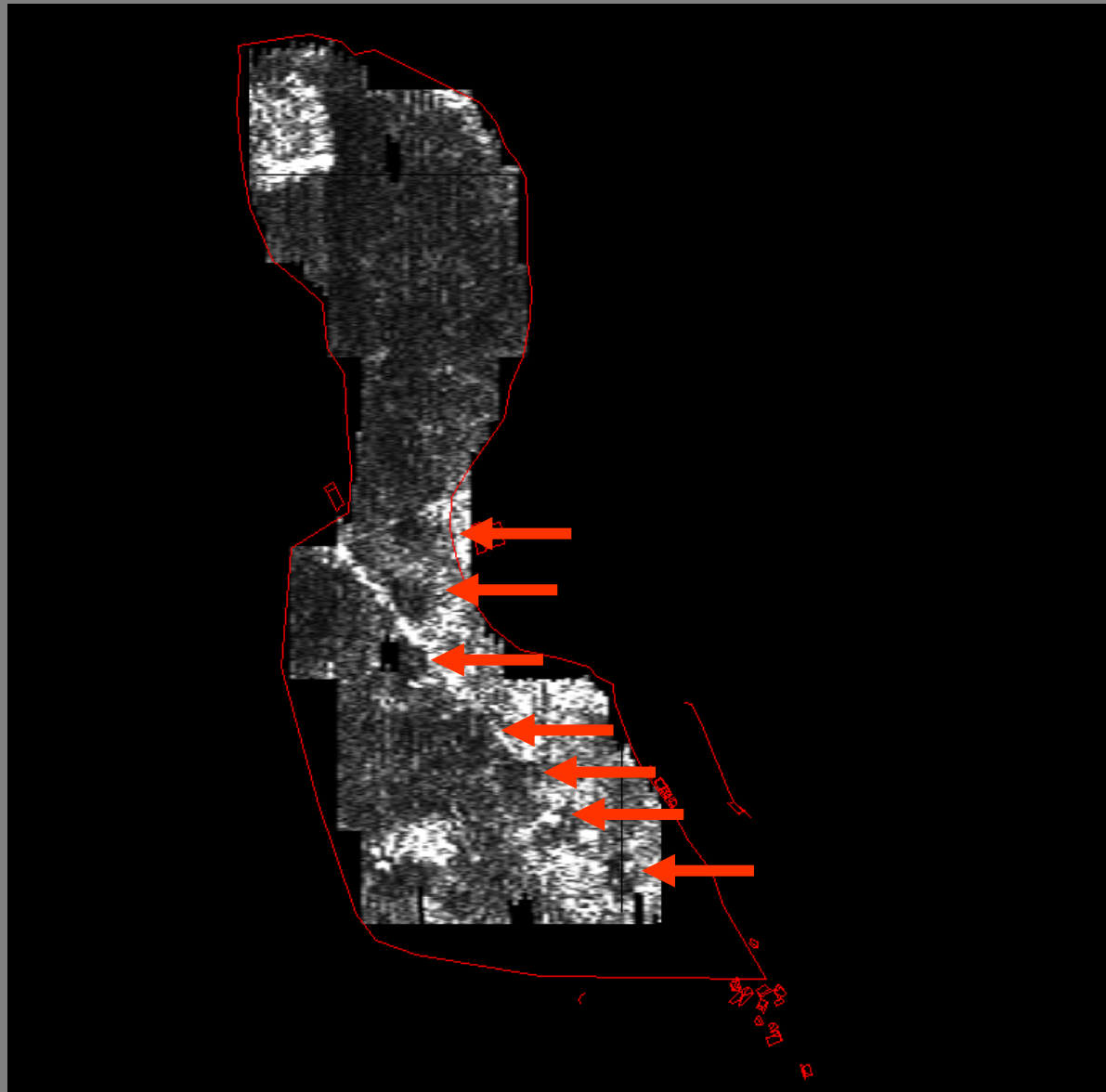
MSP2008/I/B21/F1

Section A1-A2



Section B1-B2





Interpretation

**Probably structures
related to rural
installation (villa?)**

Circles

pulseEKKO PRO

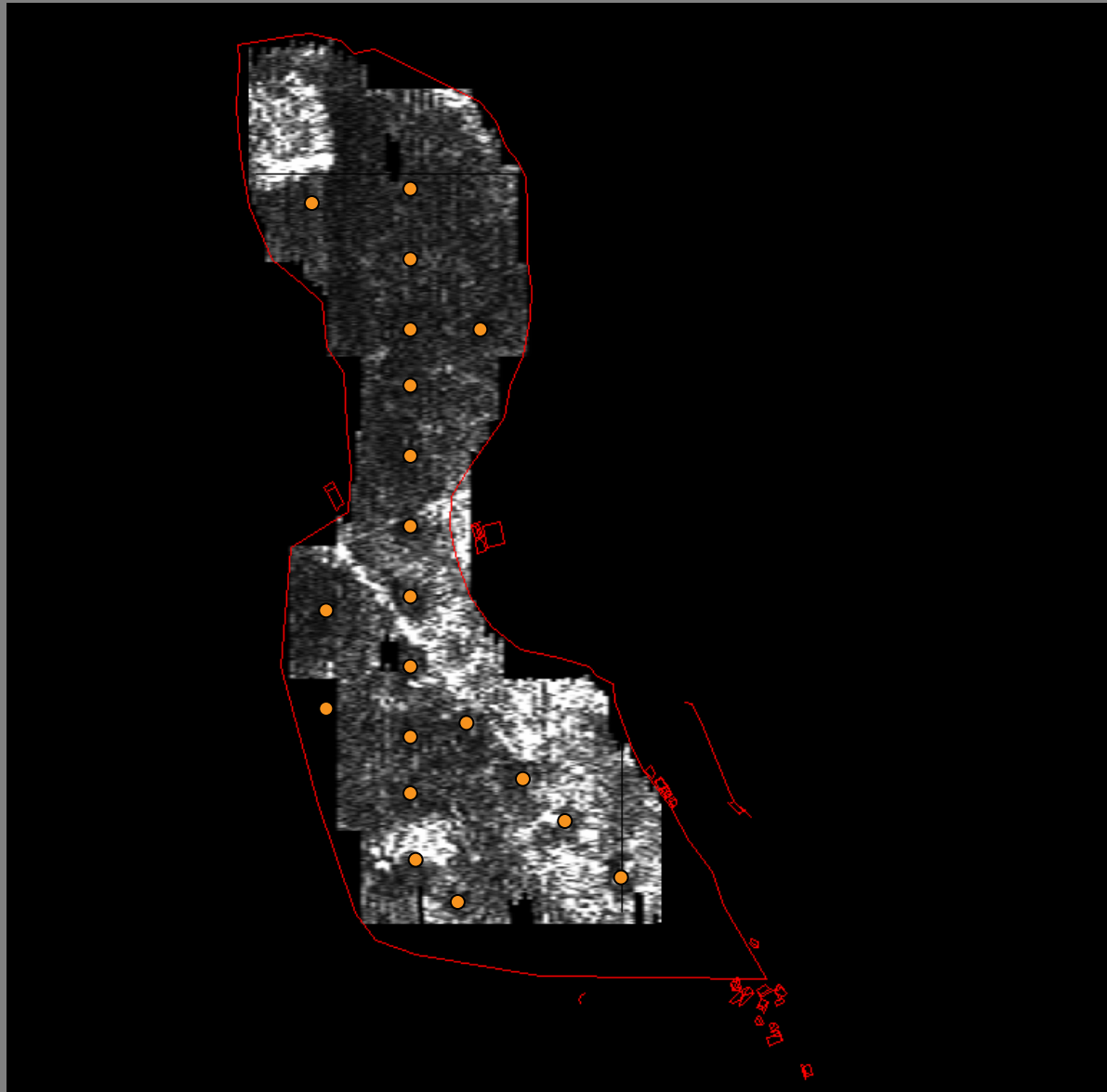
Distance with line 0.05 m

Line distance 0.25 m

500 MHz antenna

Depth 0.55-0.60 m

Surface: 22 x 45 m



Interpretation

**Probably structures
related to rural
installation (villa?)**

**Circles (olive
planting holes**

pulseEKKO PRO

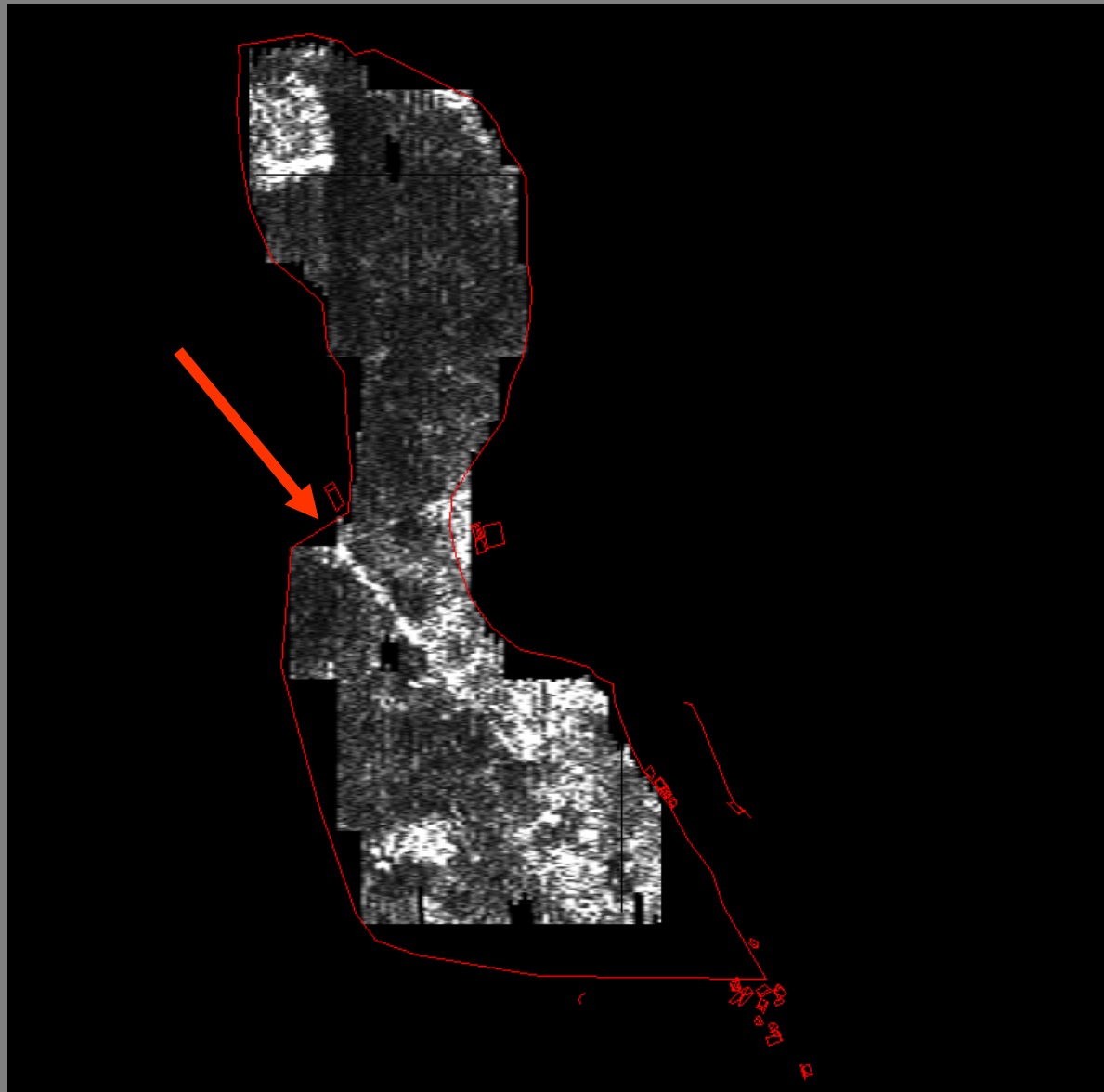
Distance with line 0.05 m

Line distance 0.25 m

500 MHz antenna

Depth 0.55-0.60 m

Surface: 22 x 45 m



Interpretation

**Probably structures
related to rural
installation (villa?)**

**Circles (olive
planting holes**

Linear anomaly

pulseEKKO PRO

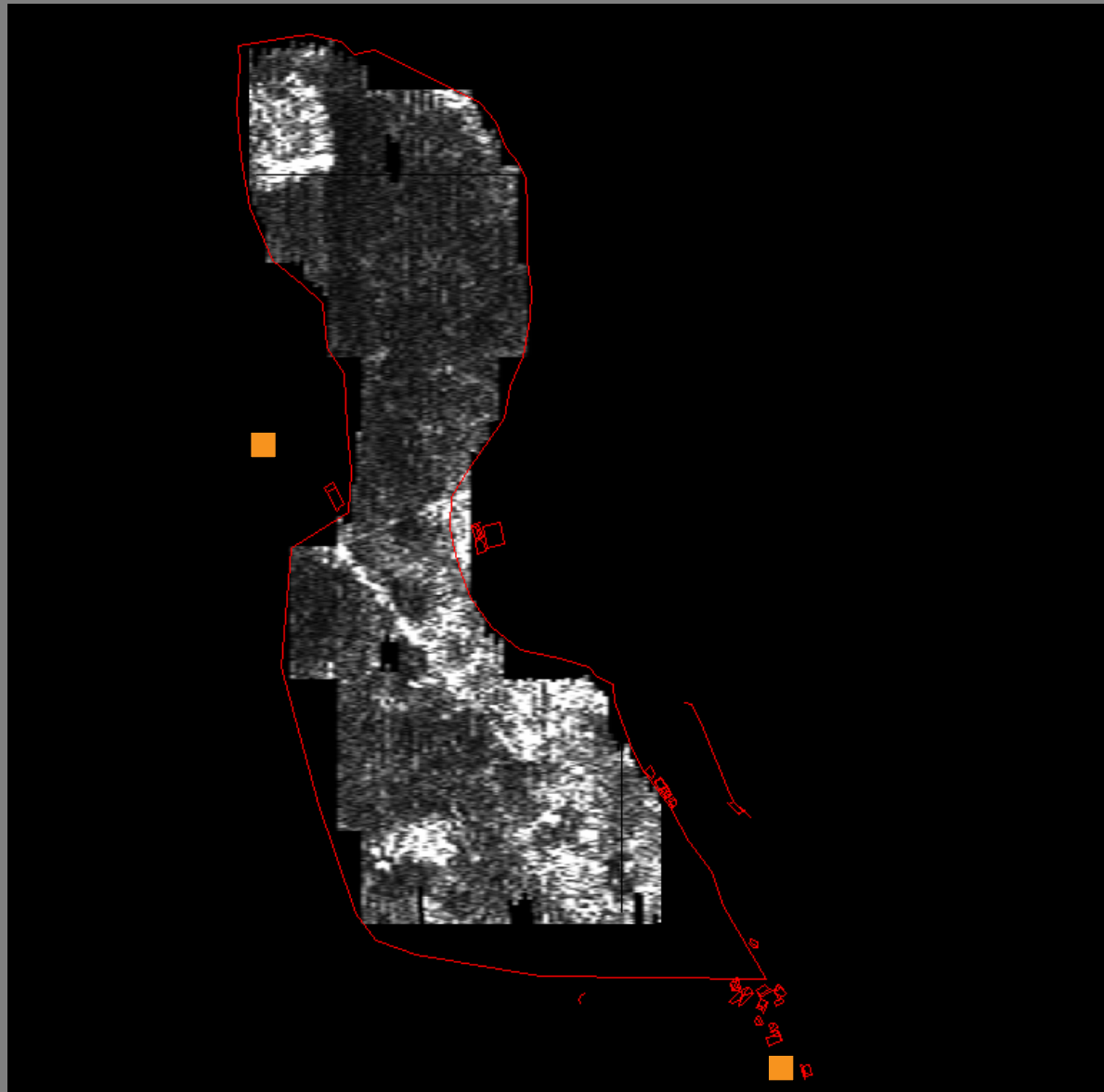
Distance with line 0.05 m

Line distance 0.25 m

500 MHz antenna

Depth 0.55-0.60 m

Surface: 22 x 45 m



Interpretation

Probably structures related to rural installation (villa?)

Circles (olive planting holes)

Linear anomaly, irrigation drain?

pulseEKKO PRO

Distance with line 0.05 m

Line distance 0.25 m

500 MHz antenna

Depth 0.55-0.60 m

Surface: 22 x 45 m

Bidnija area: 3 rural sites with structures



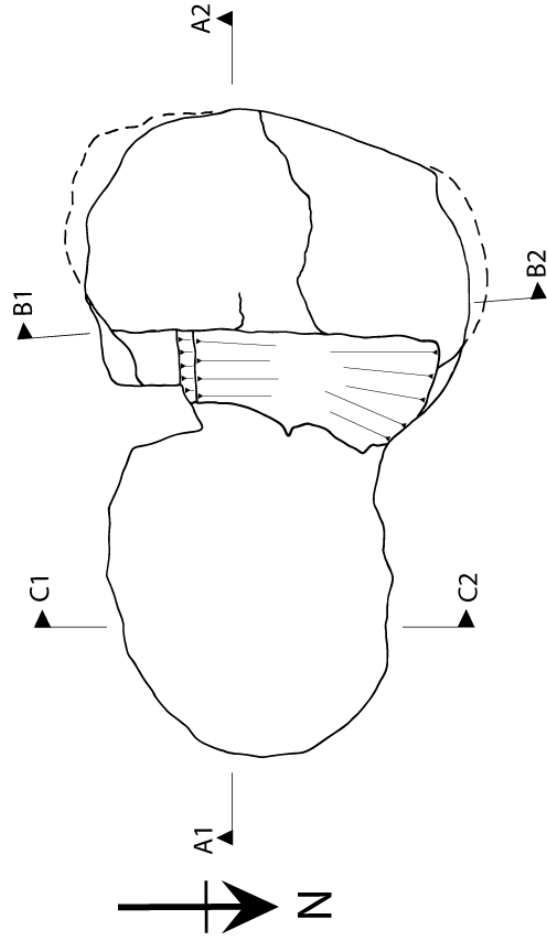
Bidnija area: 3 sites with tombs



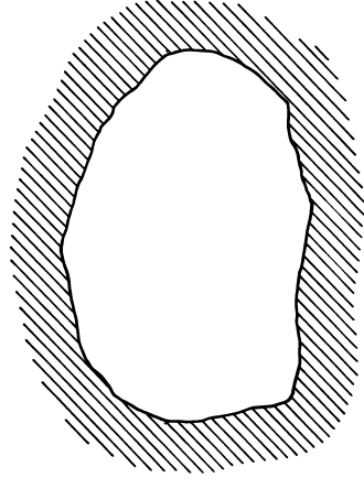


Gebel Ghawżara, Bidnija
Tomb MSP2008/1/B69/F1

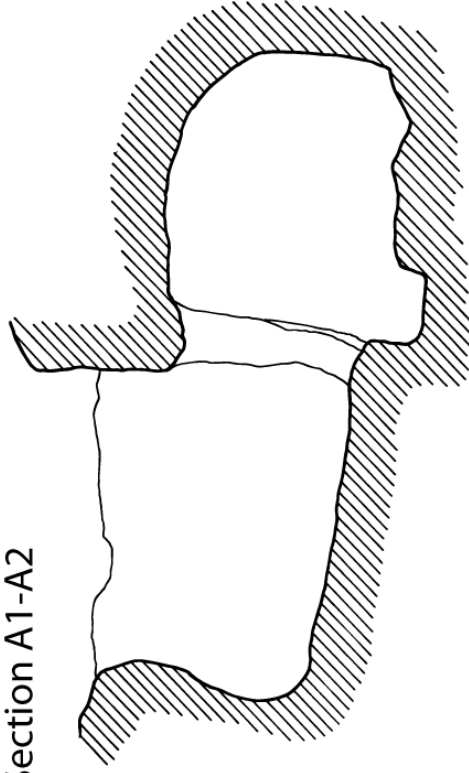
Malta Survey Project 2008



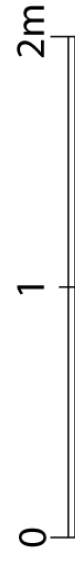
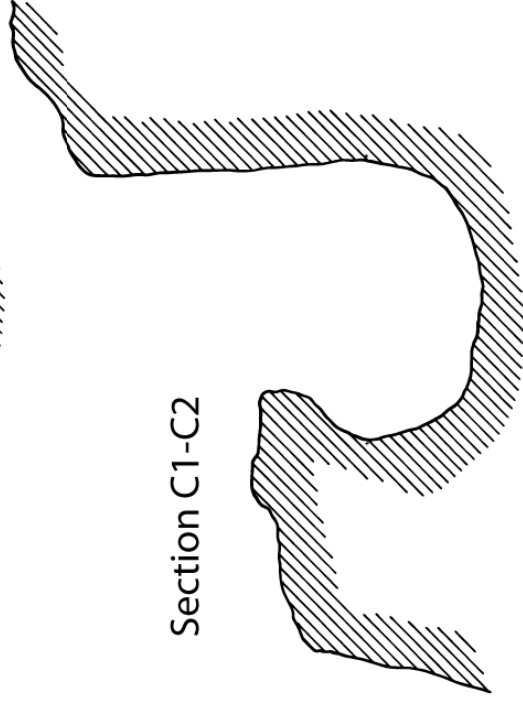
Section B1-B2



Section A1-A2



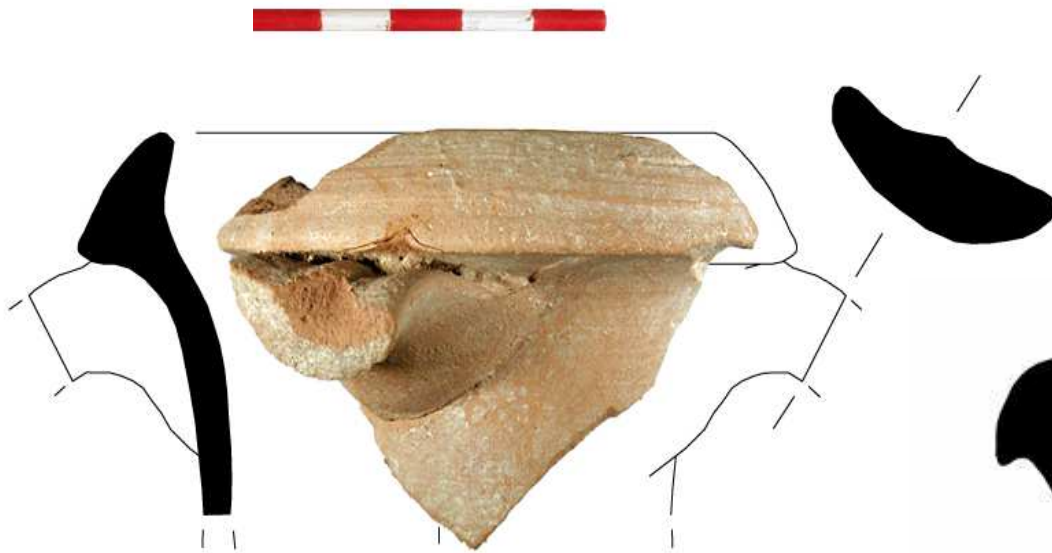
Section C1-C2





Microsoft Excel - inventory sorted uniform 12 oktober 2008.xls														
Type a question for help														
N2559														
☞ yellow inclusions; much secondary burning on inside; rim fr. Is very dubious [BB]														
A	B	C	D	E	F	G	H	I	J	K	L	M	N	O
Context	Context MSP	Obj Shape	Status	Ware	Type	Non-ceramic finds	Date	Provenance	Comments	Inventor				
1 tract no	08/1 pass no	SF-no	Condition	Obj Shape	Status	Ware	Type	Non-ceramic finds	Date	Provenance	No			
2549 B074	P01		p	jug?	wall	plain			Hellenistic-Roman	1 local				WvdP
2550 B074	P01		p	cooking pot?	wall	cooking ware?			Hellenistic-Roman	1 local?				WvdP
2551 B074	P02		1 p	lid?	rim?	cooking ware			Roman	1 local			yellow inclusions; black inclusions	WvdP
2552 B074	P02		p	amphora	wall	plain			Hellenistic-Roman	1 import?			grey core	WvdP
2553 B074	P02		p	cooking pot?	wall	cooking ware?			Hellenistic-Roman	1 local				WvdP
2554 B074	P03		1 m	basin	rim	plain			Hellenistic-Roman	1 local				WvdP
2555 B074	P03		g	bowl	base	china			Modern	1 import				WvdP
2556 B074	P03		p	closed shape	wall	plain			Hellenistic-Roman	1 local			large vessel	WvdP
2557 B074	P03		p	closed shape	wall	plain			Hellenistic-Roman	1 local			small vessel	WvdP
2558 B074	P04		1 m	lamp	profile	plain			Hellenistic-Roman	1 import			light orange core, cream surface, cut-	WvdP
2559 B074	P04		2 m	lamp?	rim	plain			Hellenistic-Roman	1 local			yellow inclusions; much secondary b	WvdP
2560 B074	P04		3 m	lamp?	rim?	plain			Hellenistic-Roman	1 local			small vessel; secondarily burnt	WvdP
2561 B074	P04		p	cooking pot?	wall	cooking ware			Hellenistic-Roman	1 local			secondarily burnt	WvdP
2562 B074	P04		p	amphora?	wall	plain			Hellenistic-Roman?	1 local?			yellow core, few inclusions	WvdP
2563 B074	P05		1 m	cooking pot	wall	cooking ware			Medieval-Early Modern	3 local?			large, thick wall; grey core; perhaps y	WvdP
2564 B074	P05		p	closed shape	wall	plain			Early Modern?	1 local			white inclusions; large vessel	WvdP
2565 B074	P05		m	cooking pot	wall	glazed			Early Modern	3 North-Africa				WvdP
2566 B074	P05		m	open shape	wall	glazed			Early Modern	1				WvdP
2567 B074	P05		m	closed shape	wall	plain		pebble		1				WvdP
2568 B074	P06		m	closed shape	wall	plain		pebble		2 import			pale clay; large vessel; secondarily b	WvdP
2569 B074	P06		m	amphora	wall	plain			Hellenistic-Roman	1 Italy			shoulder fragment; large inclusions; s	WvdP
2570 B074	P06		p	closed shape	wall	plain			Roman	1 local			brick red, white inclusions, cooking w	WvdP
2571 B074	P07		m	basin?	wall	red painted			Early Modern	1 import			inside painted?	WvdP
2572 B074	P07		m	cooking pot	wall	cooking ware			Roman?	1 import			secondarily burnt	WvdP
2573 B074	P07		p	closed shape	wall	plain			Hellenistic-Roman	1 import?			small vessel	WvdP
2574 B074	P07		p	closed shape	wall	plain			Hellenistic-Roman	1 import?			yellow fabric; tiny quartz inclusions; i	WvdP
2575 B084	C1		1 g	cooking pot?	handle	plain			Medieval	1 local			horned handle with finger impressed	
2576 B084	C1		2 g	cooking pot?	wall	plain			Medieval	1 local			decoration; 8th-10th century CE [MC]	MA
2577 B084	C1		n	closed shape	wall	plain			Medieval	6 local			line incisions	MA
pottery record sheet / Single find / Sheet3 /														

imported
amphorae



MSP2008/B21/BSI I/43



MSP2008/B21/BSI I/2



MSP2008/B21/P1/2

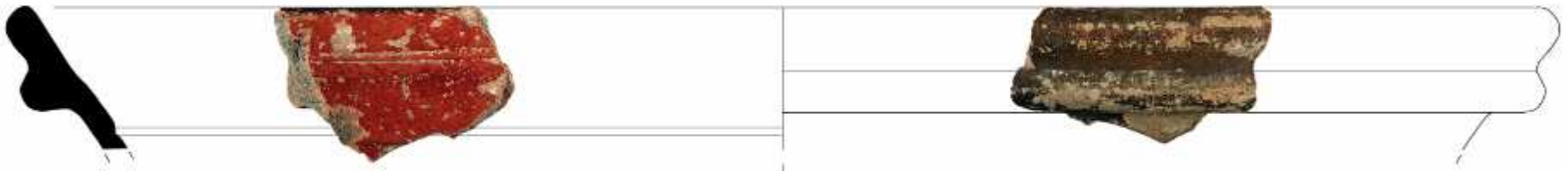


MSP2008/B21/BSI I/1

fine wares



MSP2008/B21/BS1/17

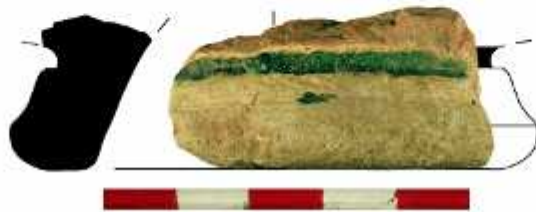


MSP2008/B21/P6/16

Medieval pottery



MSP2008/I/A1/P2/2

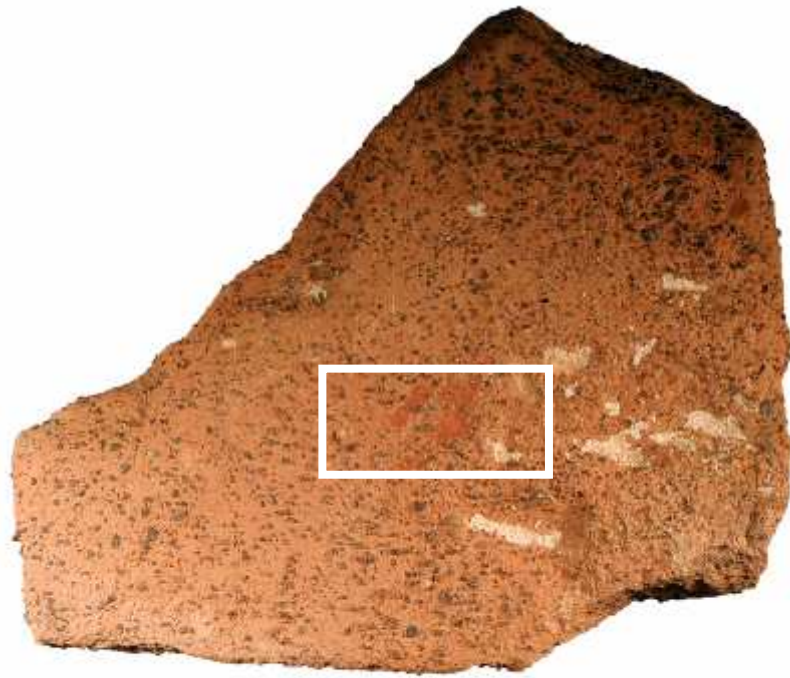


MSP2008/B74/P4/I





fabric typology



MSP2008/B2 I/W I/3



THANKS !